

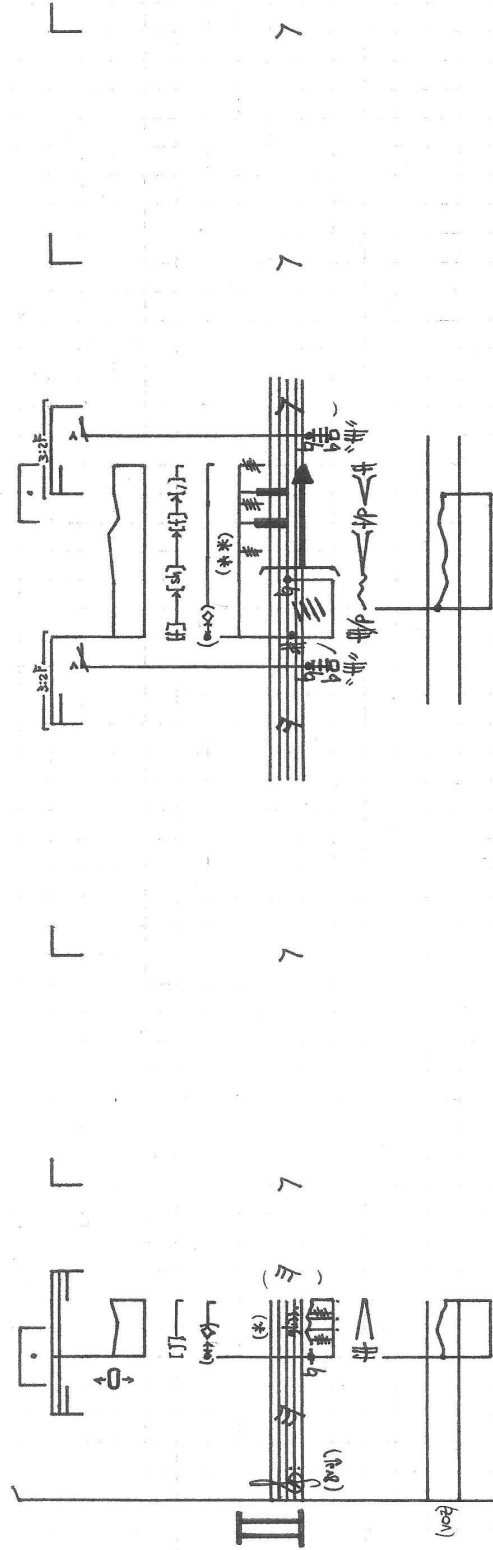
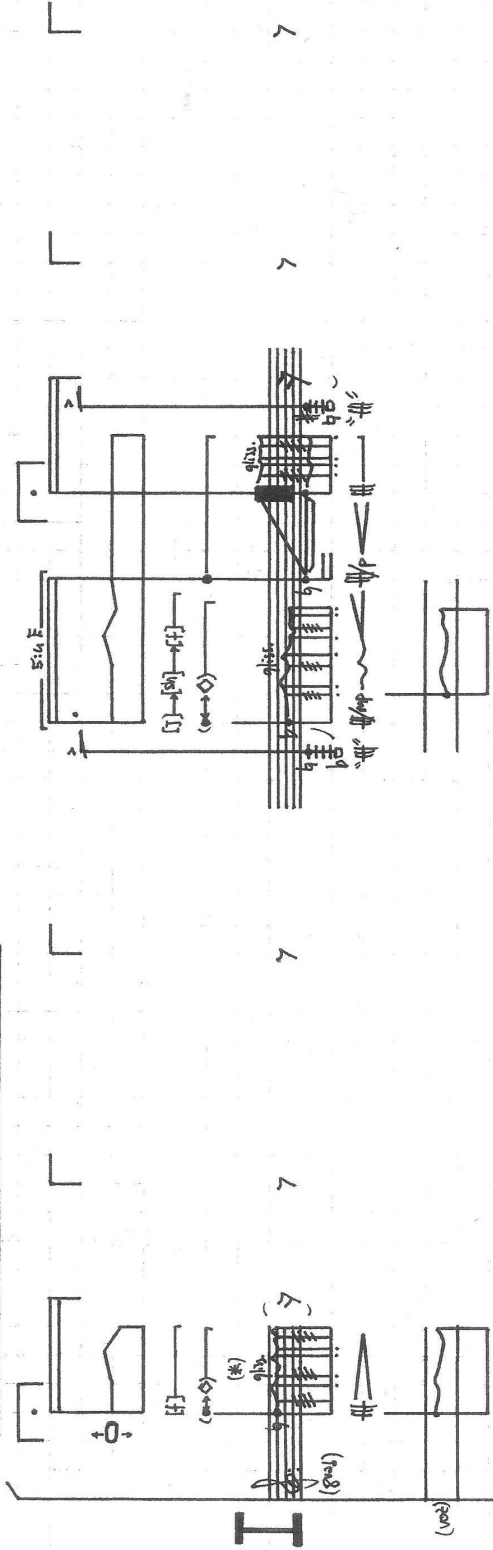
**TUKDAM [dos flautas bajas]**

**Pablo Araya**

**TUKDAM**

especialmente escritos y dedicados a las MEI

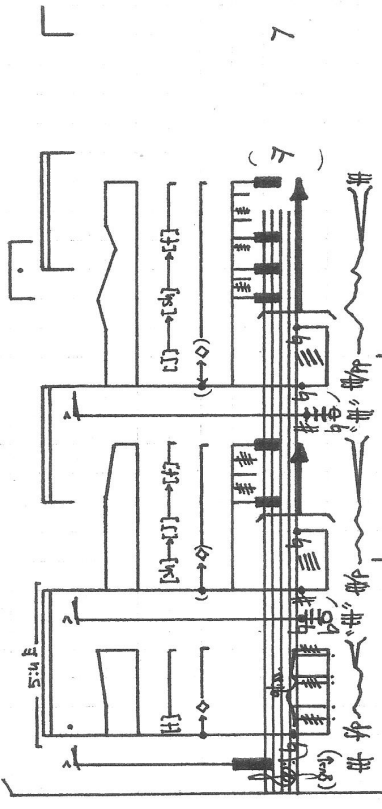
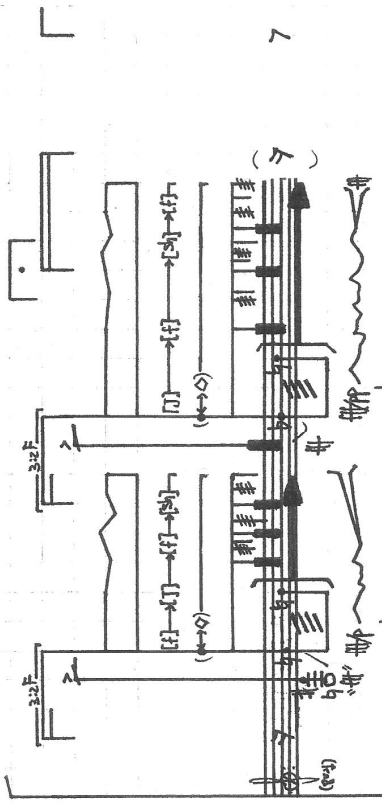
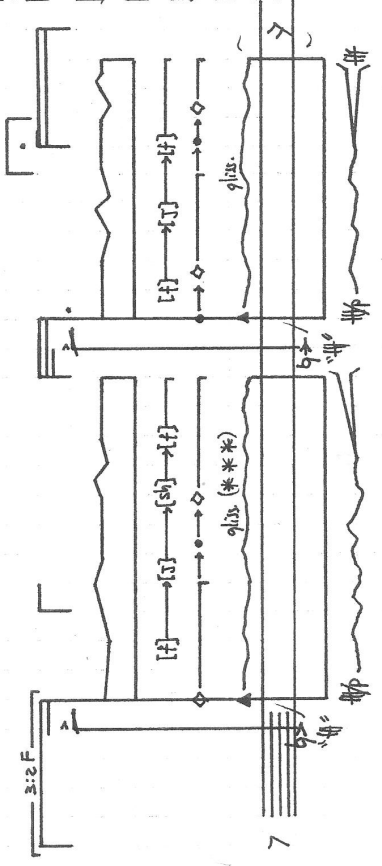
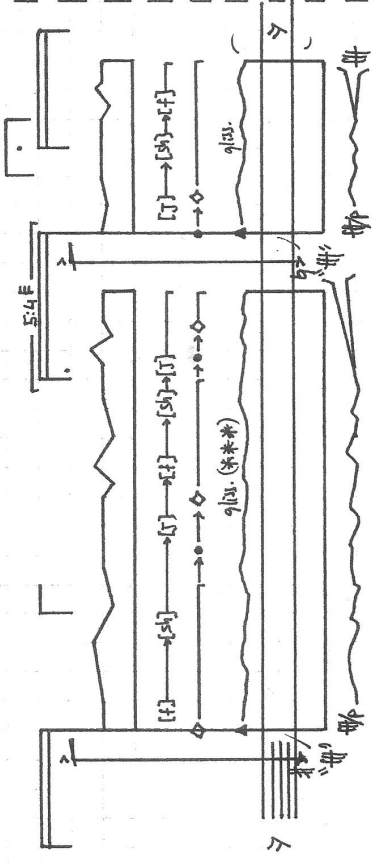
(f = 45-50) - Fluido, Espontáneo y Energico:



(\*) = extremadamente irregular y ruidoso (la sonoridad se consigue a partir de la combinación de pol. irregulares y stacc., más la suma del foraneo).

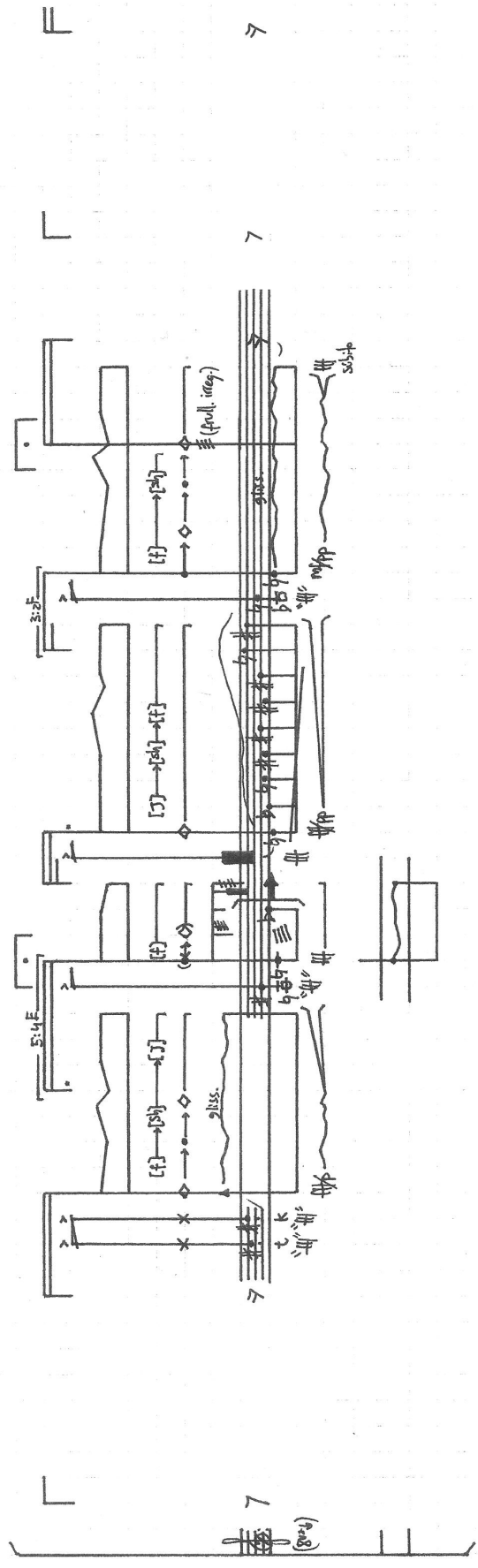
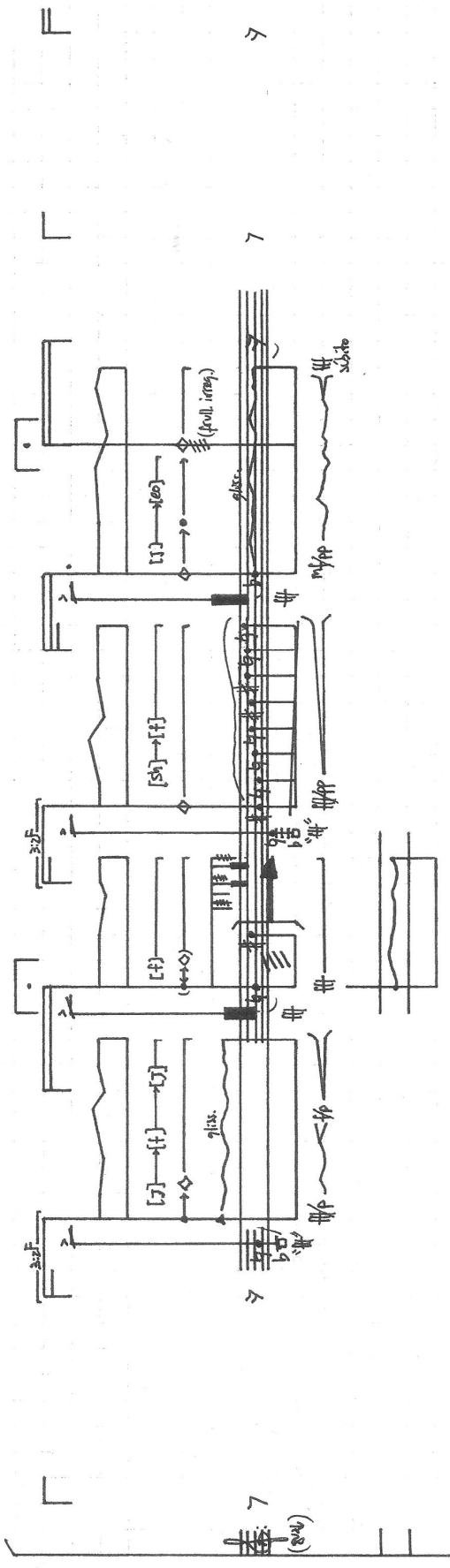
(\*\*) = sonoridad completa a partir de una sumatoria de elementos (alternancia ad lib. de aere-sonido y sonido, foraneo, aparición ocasional de multiplos, y el tremolo). En realidad, esta sumatoria es ilusoria, es una simulación.

2

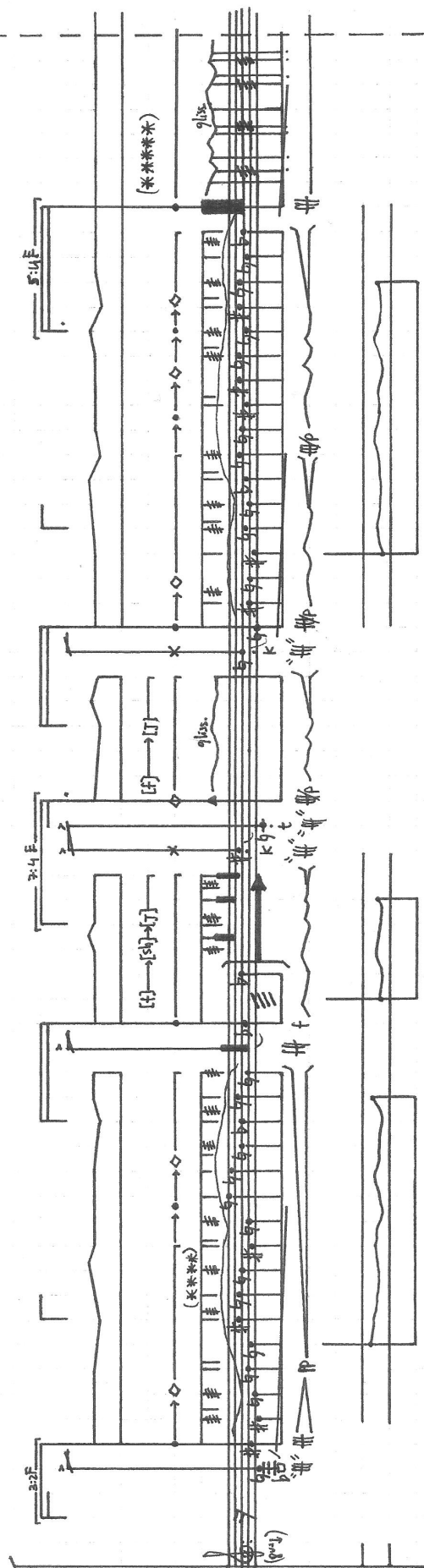
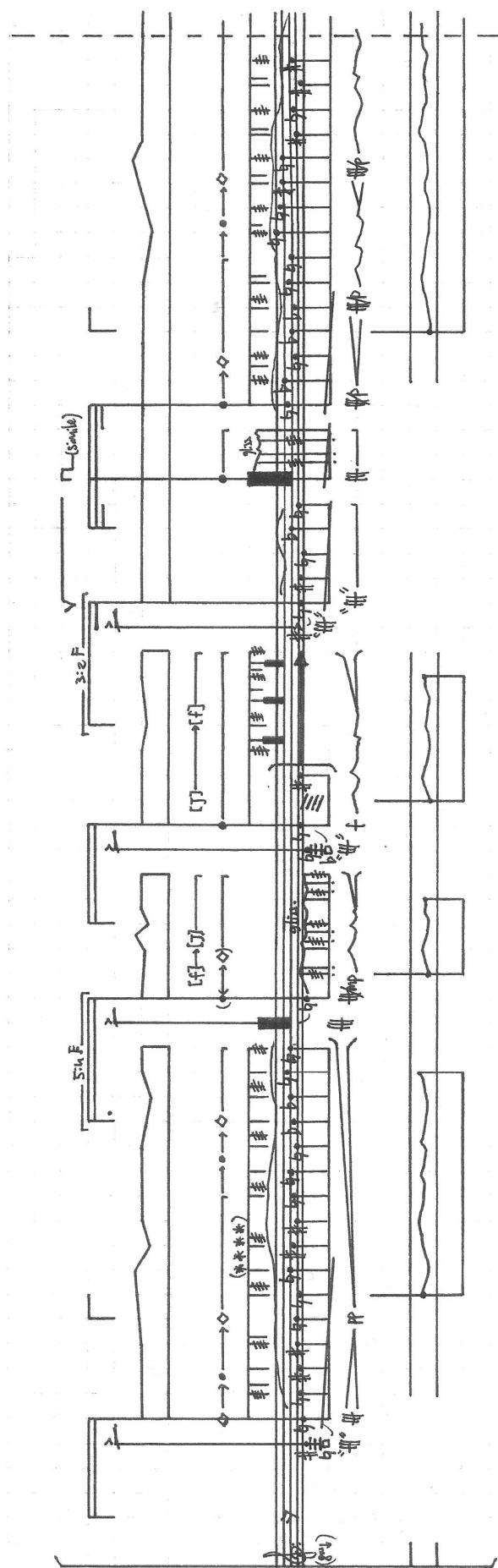


(\*) = oscilaciones de altura muy irregular (no gliss. amplos)

3



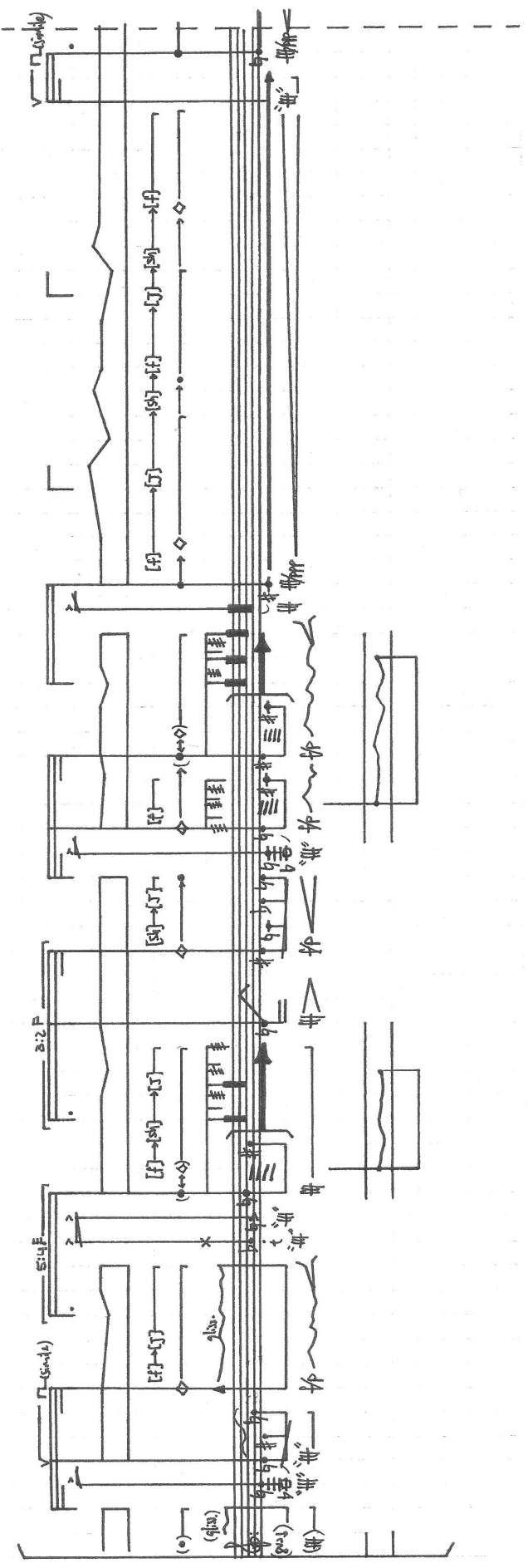
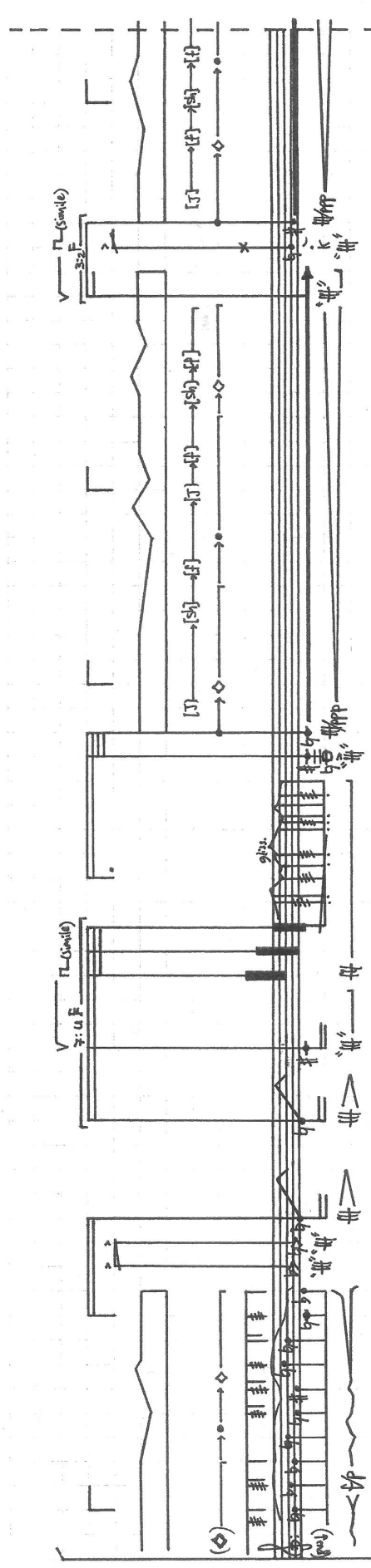
4)



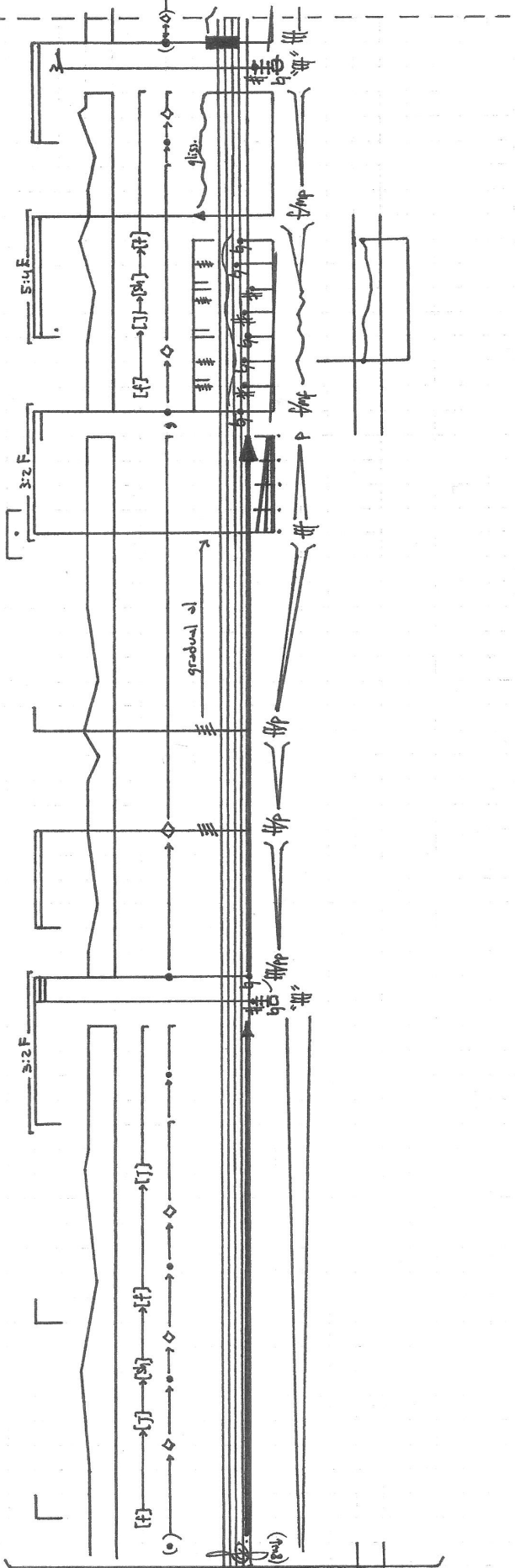
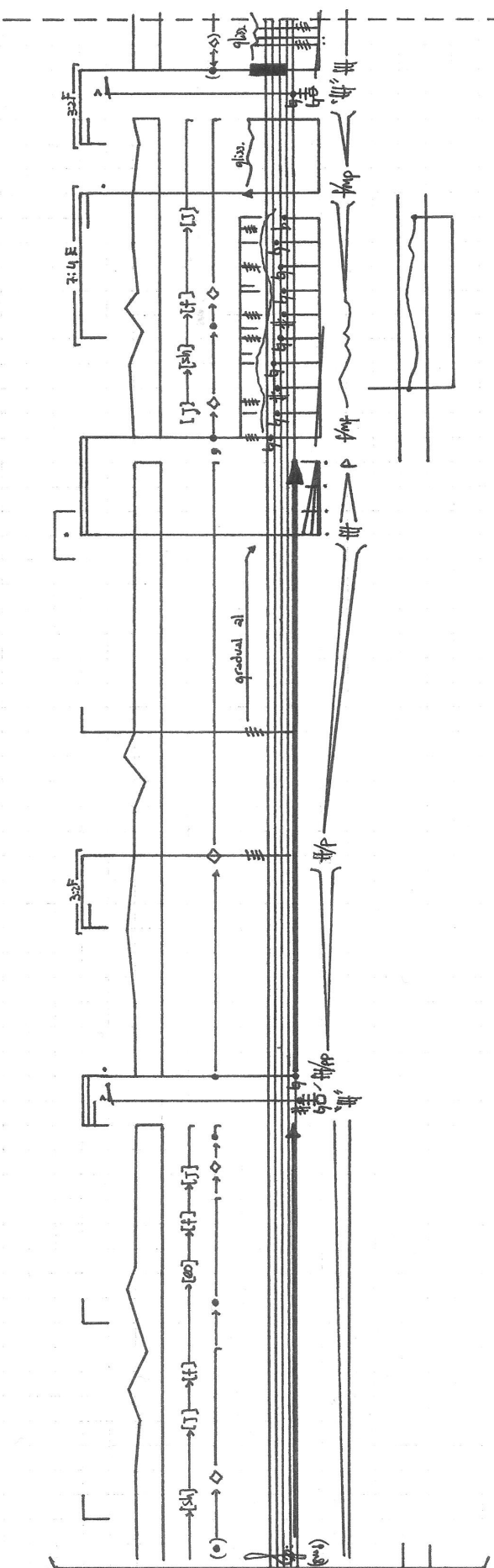
(\*\*\*\*\*) = follatis irregulares; separación y desaparición de los muros, generando una sonoridad altamente irregular y ruidosa.

(\*\*\*\*\*) = cluster de armónicos - sonoridad irregular y ruidosa.

⑤



⑥



(7)

The image shows a handwritten musical score for a string quartet, divided into two systems. Each system consists of four staves (Violin I, Violin II, Viola, and Cello/Double Bass). The score includes various musical notations such as notes, rests, and dynamic markings.

**System 1 (Left):**

- Violin I: Starts with a dynamic of *ff* and a *rit.* marking. A box labeled "Cantar Subitamente" is positioned above the staff.
- Violin II: Starts with a dynamic of *ff* and a *rit.* marking. A box labeled "Cantar Subitamente" is positioned above the staff.
- Viola: Starts with a dynamic of *mp*.
- Cello/Double Bass: Starts with a dynamic of *f*.
- Below the staves, there are two boxes labeled "SENZA TEMPO" with arrows pointing to the beginning of the section.

**System 2 (Right):**

- Violin I: Starts with a dynamic of *ff* and a *rit.* marking. A box labeled "Cantar Subitamente" is positioned above the staff.
- Violin II: Starts with a dynamic of *ff* and a *rit.* marking. A box labeled "Cantar Subitamente" is positioned above the staff.
- Viola: Starts with a dynamic of *mp*.
- Cello/Double Bass: Starts with a dynamic of *p*.
- Below the staves, there are two boxes labeled "SENZA TEMPO" with arrows pointing to the beginning of the section.
- A box labeled "DESINCRONIADO" is positioned between the two systems, with arrows pointing to the start of the second system.
- A box labeled "zill. aprox." is positioned below the Cello/Double Bass staff.

**Legend:**

(\*\*\*\*\*) = de dúxer de armónicos 2 notas o alturas simple - sonoridad irregular y ruidosa.



This musical system consists of two staves. The upper staff is for piano, and the lower staff is for violin. The score includes various dynamic markings such as *ppp*, *pp*, *mf*, and *f*. Performance instructions include *rit.* (ritardando) and *allarg.* (allargando). A box labeled "Canta, Sottovoce" is positioned above the piano staff. A section of the score is bracketed and labeled "DESINCROINAZIONE". The score concludes with the instruction "segue" (continues).

This musical system also consists of two staves for piano and violin. It includes dynamic markings like *ppp*, *pp*, *mf*, and *f*. Performance instructions include *rit.*, *allarg.*, *ad lib.*, and *3<sup>a</sup> silenzio*. A box labeled "Canta, Sottovoce" is present above the piano staff. A section of the score is bracketed and labeled "Canta, Sottovoce". The score concludes with the instruction "segue" (continues).

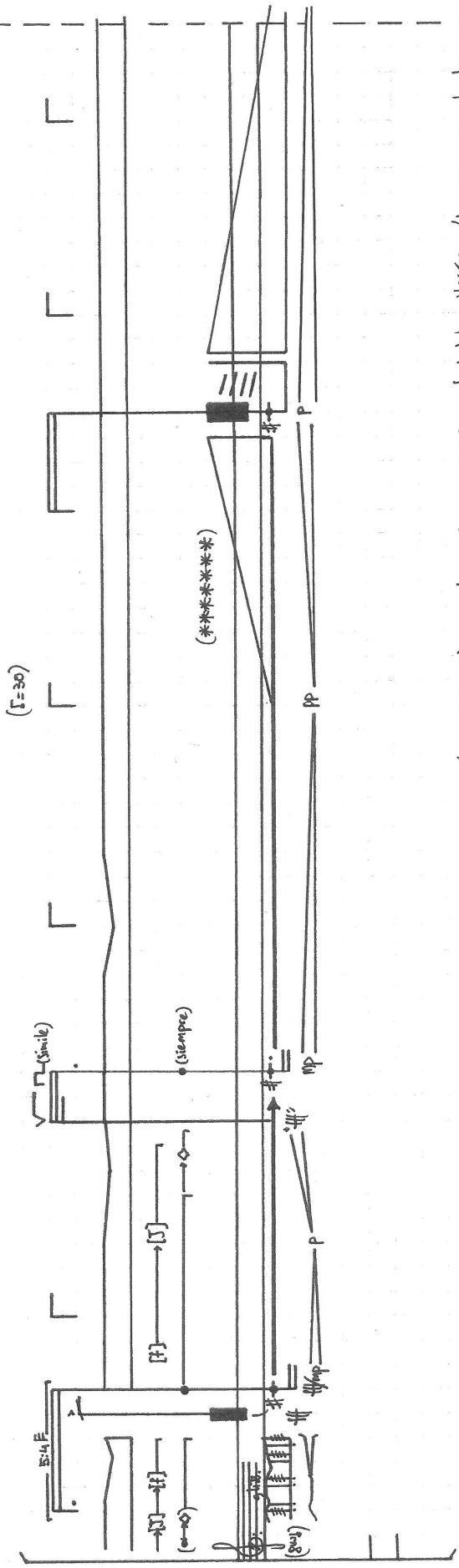
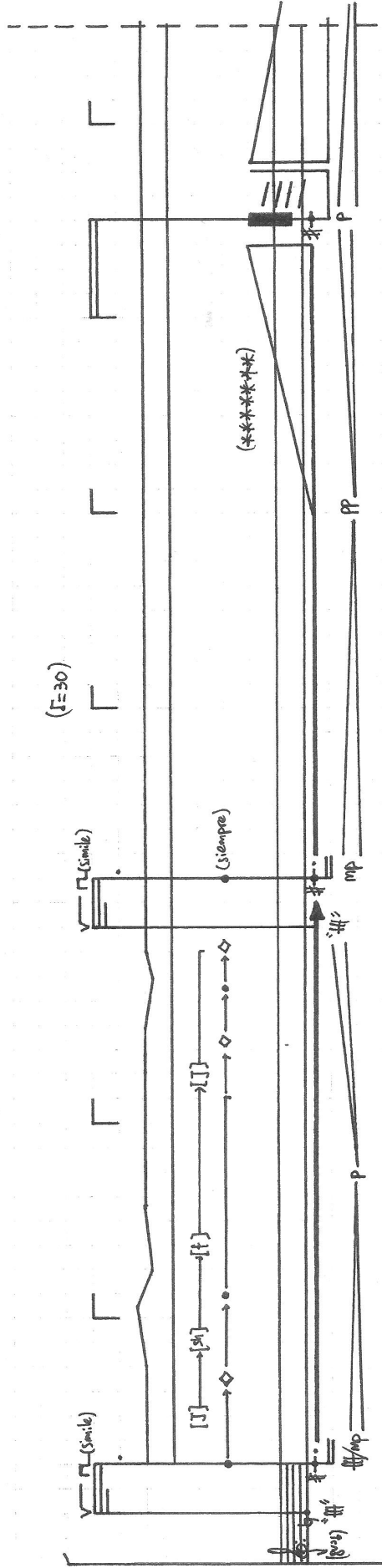
9

Musical score for the first system. It consists of a vocal line and a piano accompaniment. The piano part includes a section labeled "Cantar Substancialmente" and a section labeled "2º silencio". The vocal line has lyrics "(staccatiss. - articulado)". The tempo is marked "A TEMPO".

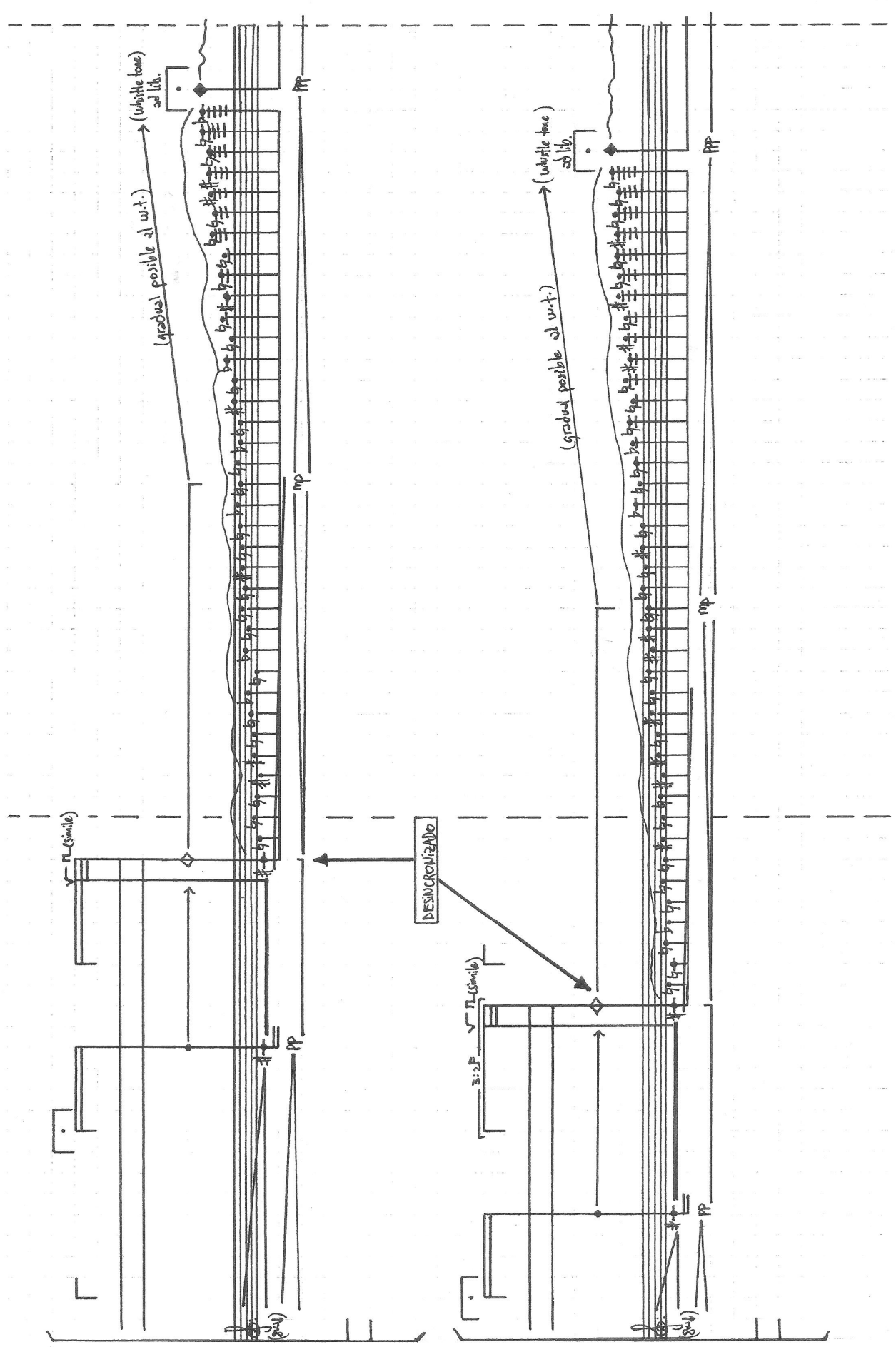
Musical score for the second system. It continues the vocal line and piano accompaniment. The piano part includes a section labeled "Cantar Substancialmente" and a section labeled "2º silencio". The vocal line has lyrics "(staccatiss. - articulado)". The tempo is marked "A TEMPO".

Musical score for the right page, featuring multiple staves with notes, rests, and dynamic markings. It includes a piano section with a 3:2 F time signature and a section with a 40:8 E time signature. The score is written in a traditional Chinese notation style with some Western-style notes.

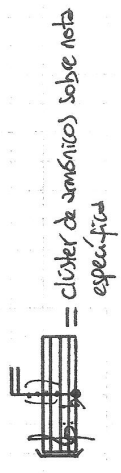
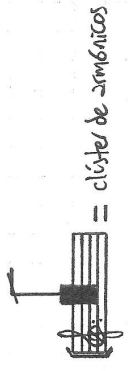
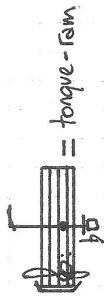
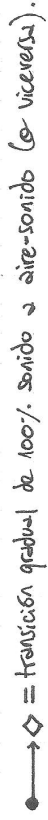
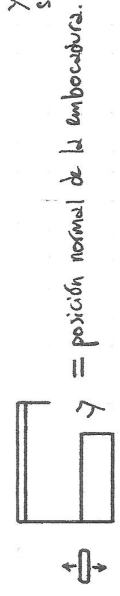
Musical score for the left page, featuring multiple staves with notes, rests, and dynamic markings. It includes a piano section with a 3:2 F time signature and a section with a 40:8 E time signature. The score is written in a traditional Chinese notation style with some Western-style notes.



(\*\*\*\*\*)= construcción y especificación gradual del multi-fónico / lo mismo con la duración rición del multi-fónico (de multi-fónico a nota e altura normal-gradual).



Notas:



- El concepto respecto al sonido, es que siempre es irregular (más no incoherente), rugoso y tendiente al RUIDO. (si fuéramos que ponés lo en términos materiales, diríamos que este más se trata a un objeto fractal por lo irregular y topológico por las transiciones continuas del sonido).

- Los calderones están para que el gesto del sonido puedan ser hechos y completados de manera coherente.

- voz: la voz está utilizada como un timbre y nunca debe sobrepasar al sonido de la flauta.

Fin  
 Pablo Arayo  
 Diciembre de 2014  
 Julio de 2015

