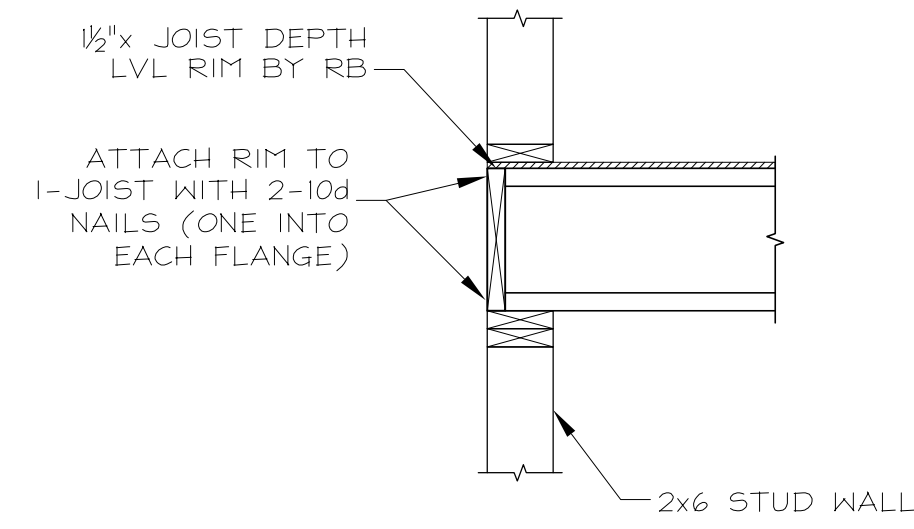
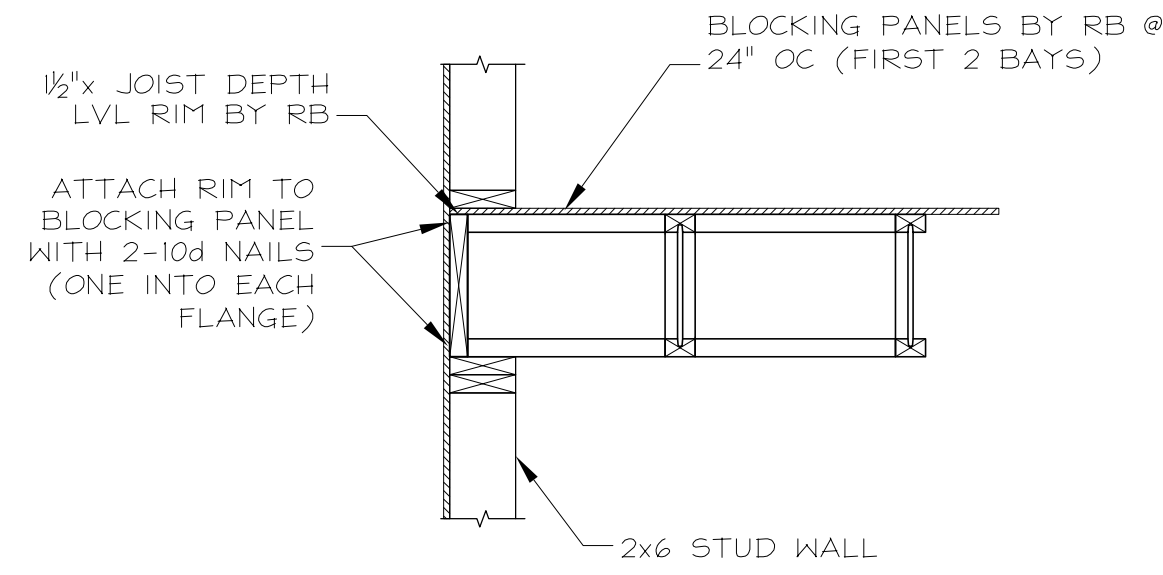


Anexo 3

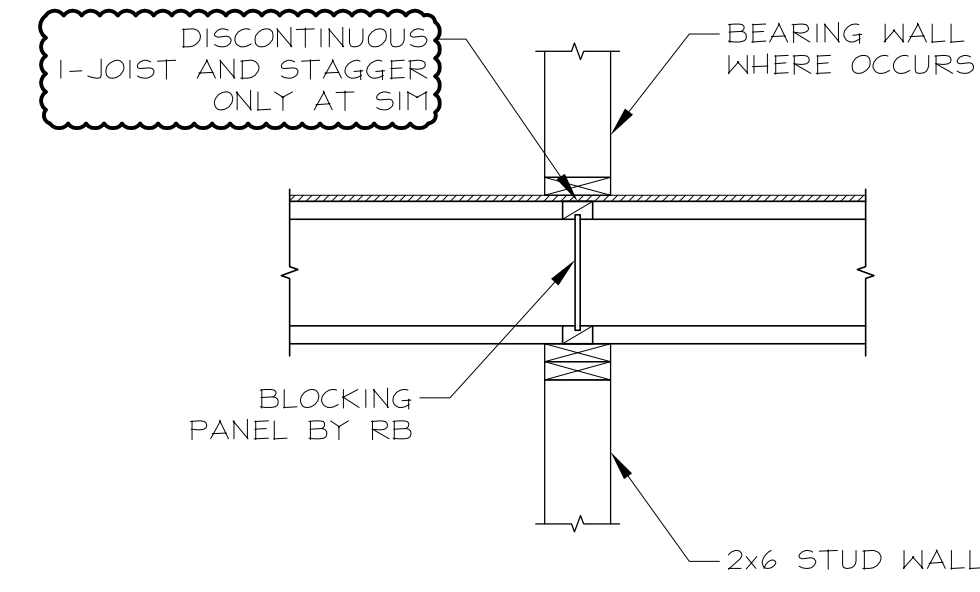
Set de Planos



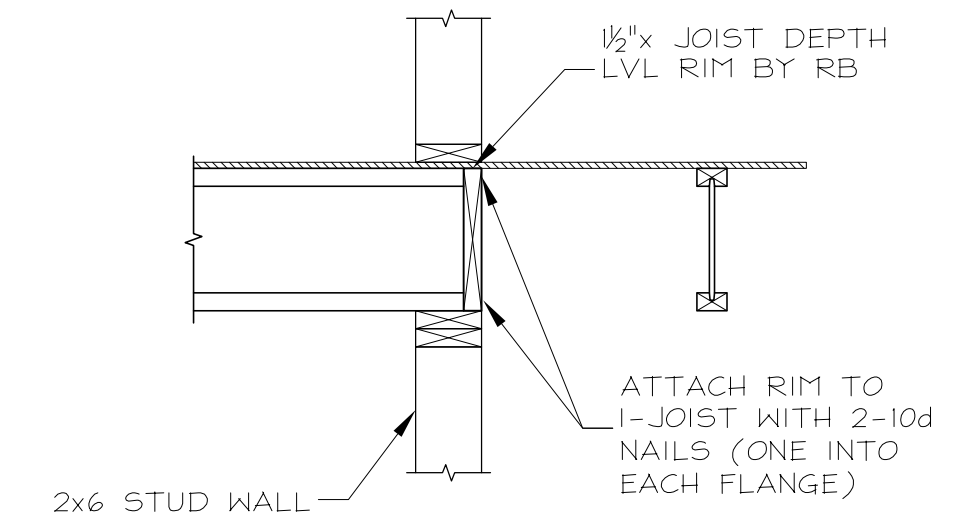
1
10
REF. 2/54.1
11/54.1
12/55.1



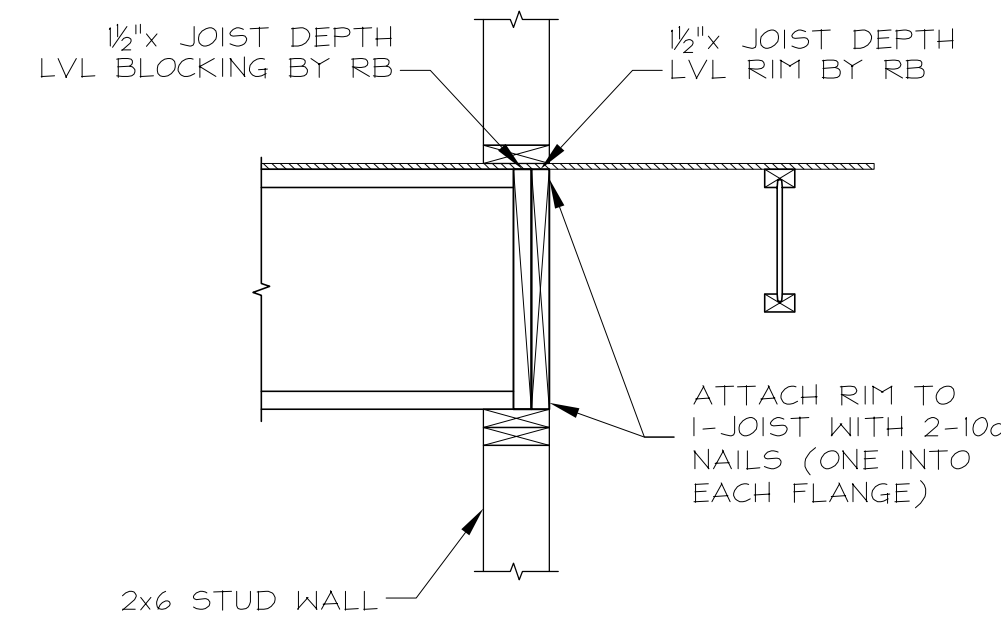
2
10
REF. 3/54.1



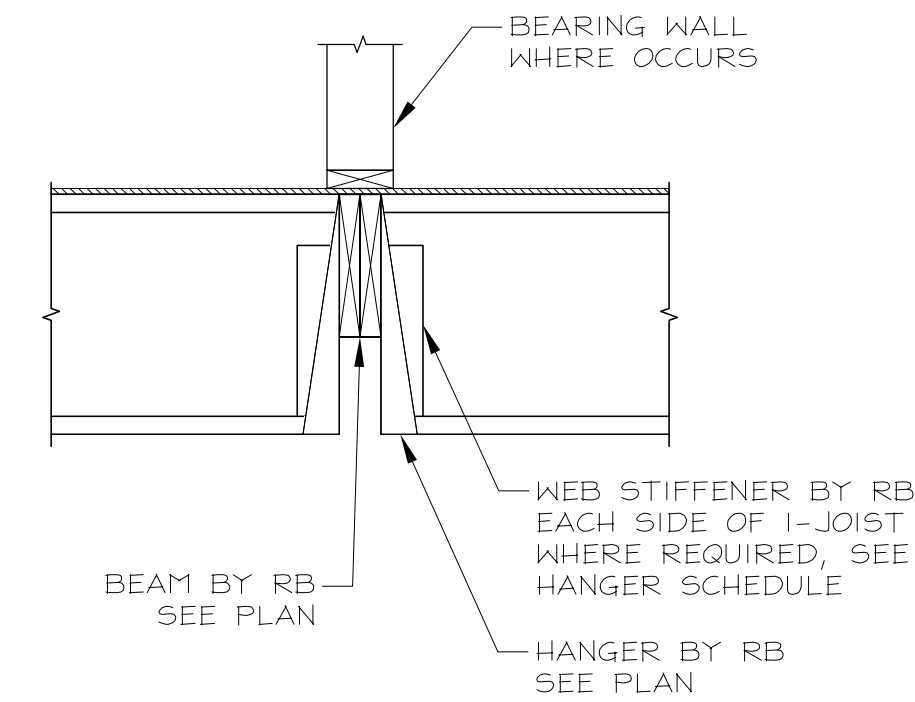
3
10
REF. 4/54.1
14/55.1



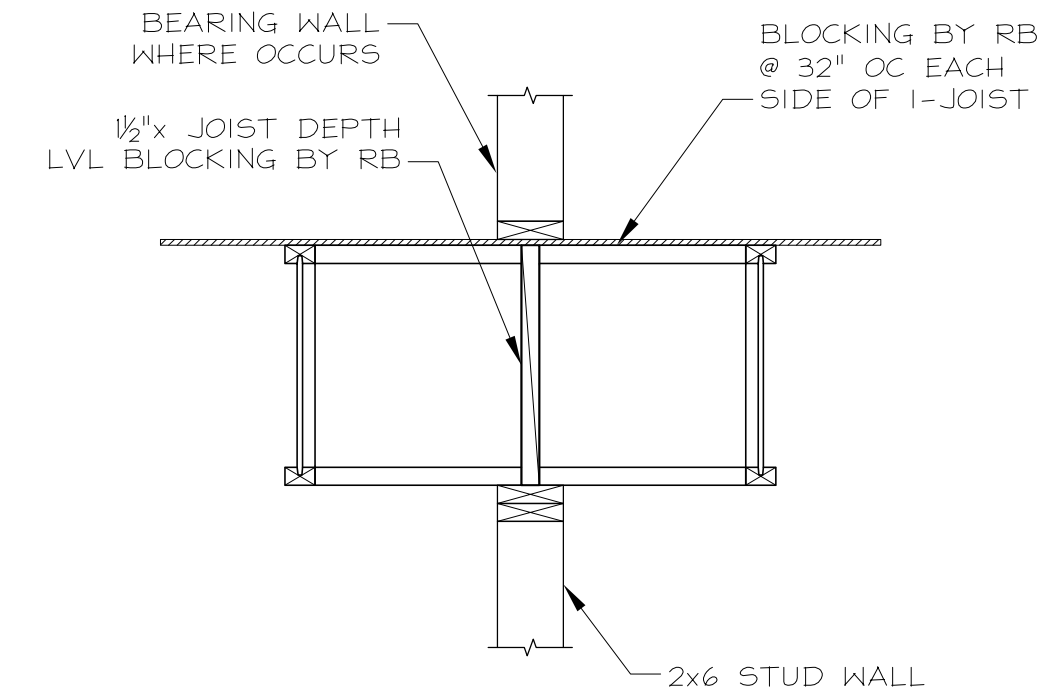
4
10
REF. 6/54.1
7/54.1
14/55.2



5
10
REF. 13/54.1
14/54.2

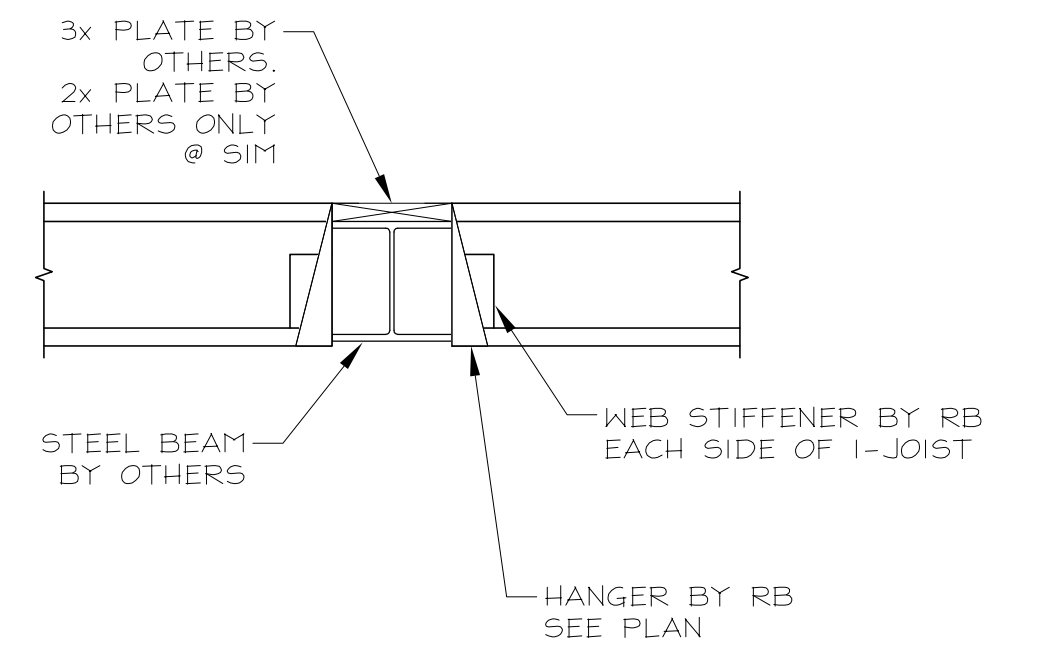


6
10
REF. 9/54.1
10/54.1
20/55.1



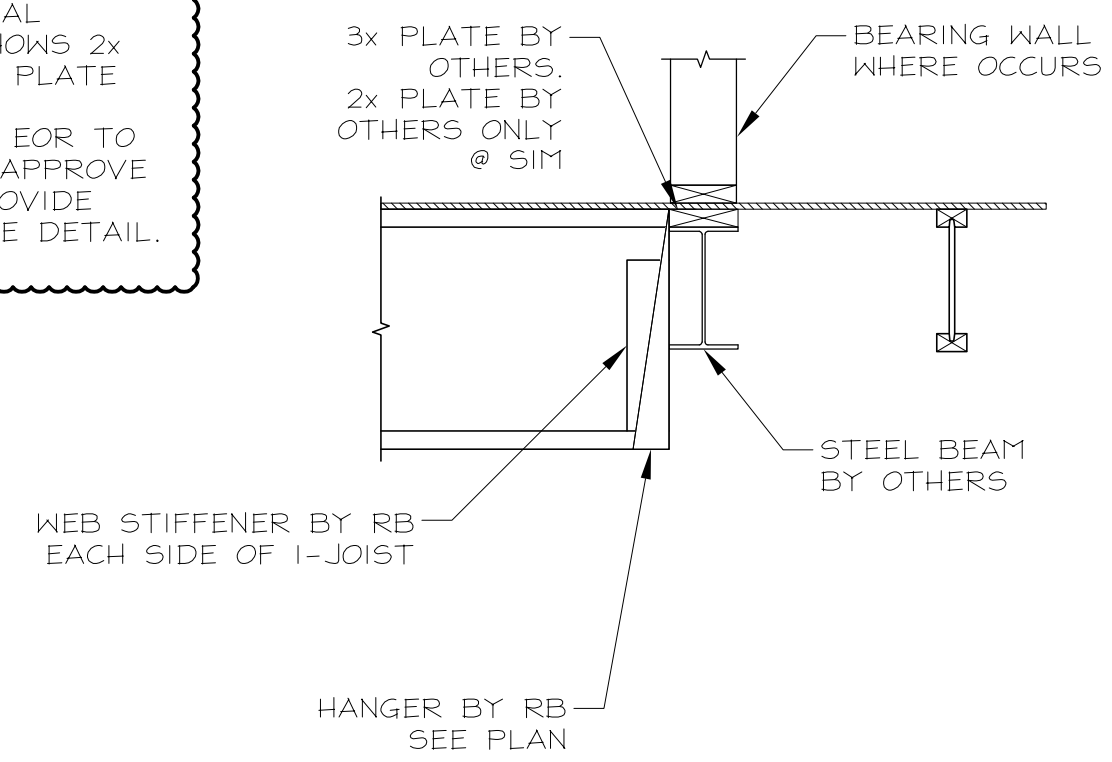
7
10
REF. 20/54.1

STRUCTURAL DEVIATION
STRUCTURAL DETAIL SHOWS 2x PLATE. 3x PLATE HAS BEEN ASSUMED. EOR TO REVIEW & APPROVE OR TO PROVIDE ALTERNATE DETAIL.

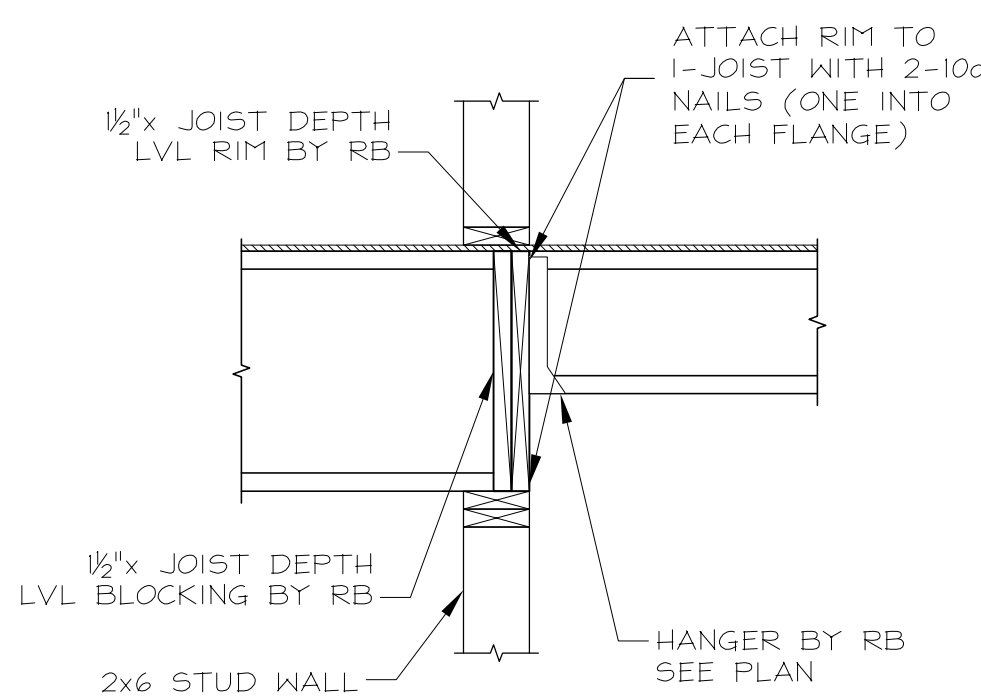


8
10
REF. 15/54.1
15/55.1

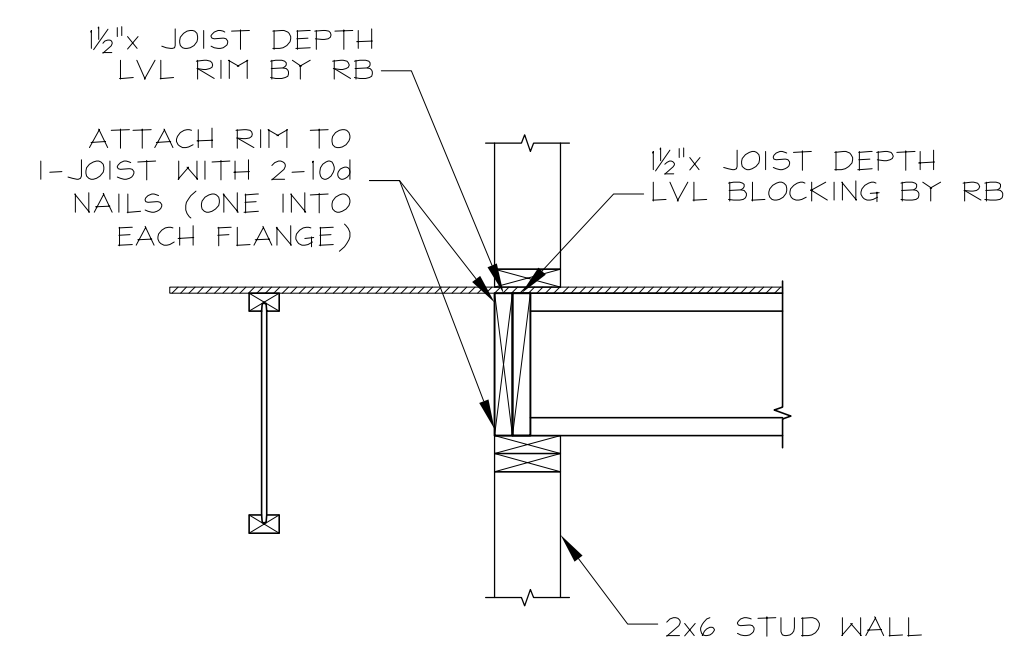
STRUCTURAL DEVIATION
STRUCTURAL DETAIL SHOWS 2x PLATE. 3x PLATE HAS BEEN ASSUMED. EOR TO REVIEW & APPROVE OR TO PROVIDE ALTERNATE DETAIL.



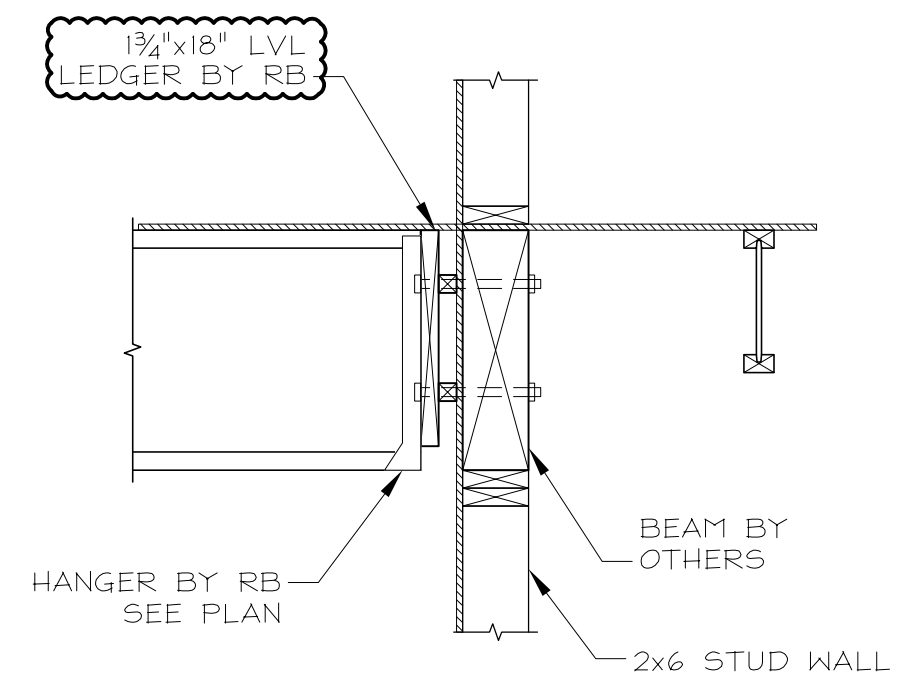
9
10
REF. 17/54.1
16/54.1
19/54.1



10
10
REF. 5/54.1



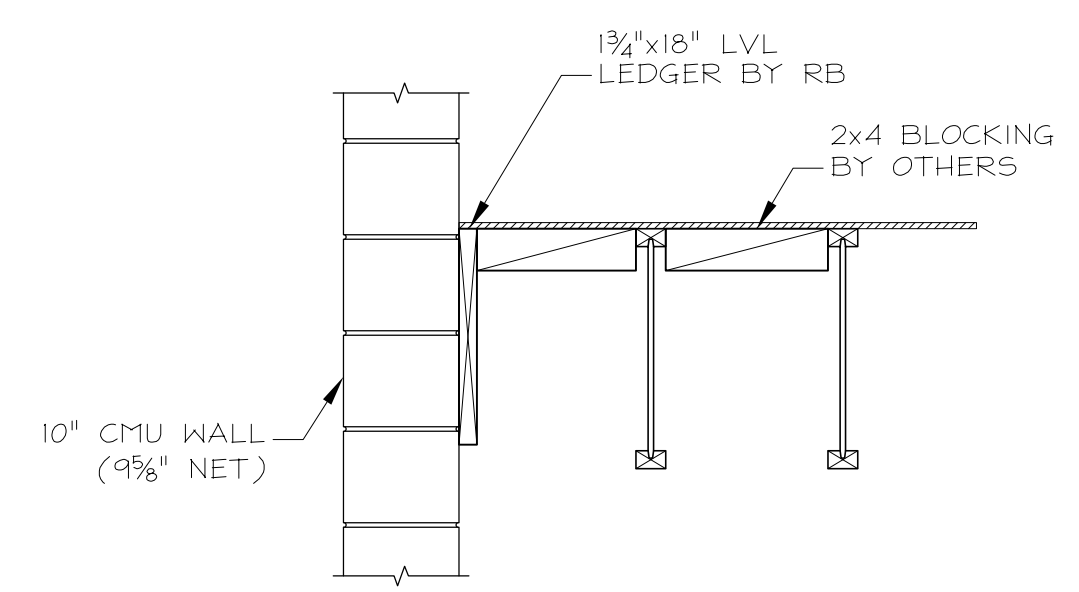
11
10
REF. 14/54.1



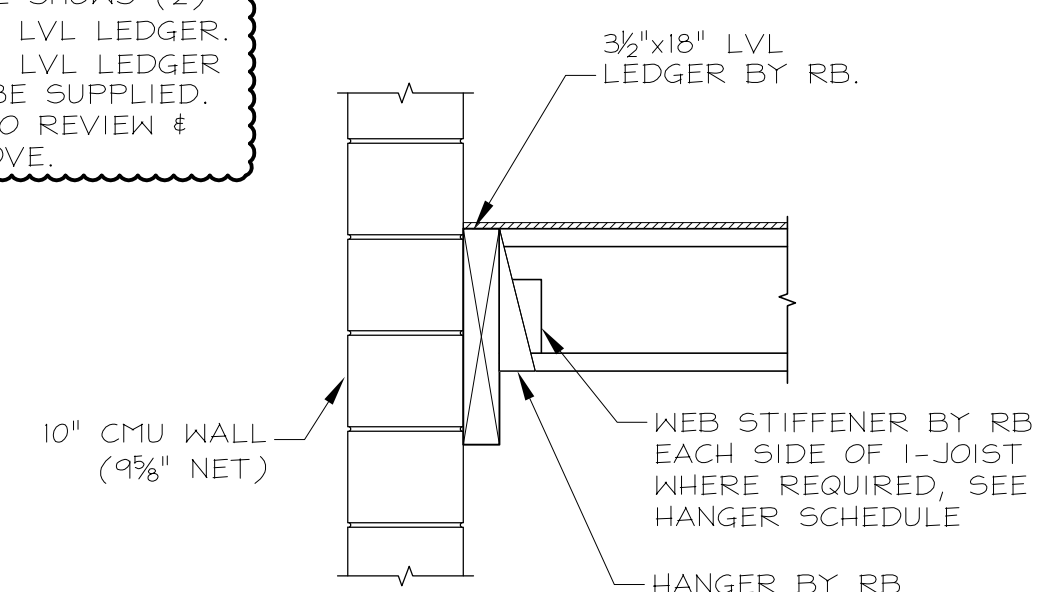
12
10
REF. 15/54.2

FOR APPROVAL ONLY
NOT FOR CONSTRUCTION

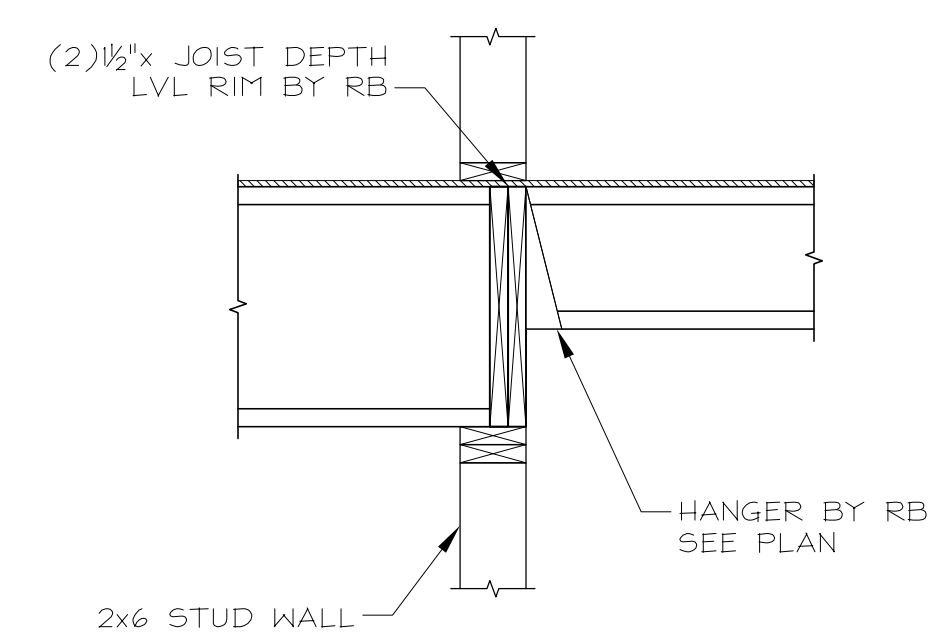
STRUCTURAL DEVIATION
STRUCTURAL DETAIL SHOWS (2) 1 3/4" x 18" LVL LEDGER. 3 3/8" x 18" LVL LEDGER WILL BE SUPPLIED. EOR TO REVIEW & APPROVE.



13
10
REF. 5/54.2
6/55.2



14
10
REF. 4/54.2
12/51.3
7/55.2



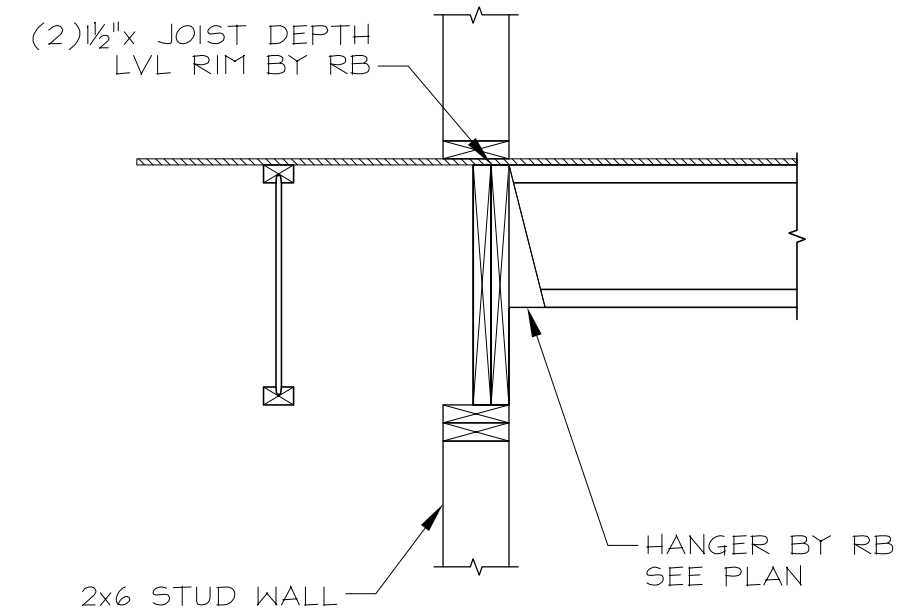
15
10
REF. 8/54.1
13/54.2

STRUCTURAL DEVIATION
STRUCTURAL DETAIL SHOWS A SINGLE PIECE DRAG STRUT OR RIM. (2) 1 1/2" x 20" LVL HAS BEEN ASSUMED. EOR TO REVIEW & APPROVE OR TO PROVIDE ALTERNATE DETAIL.

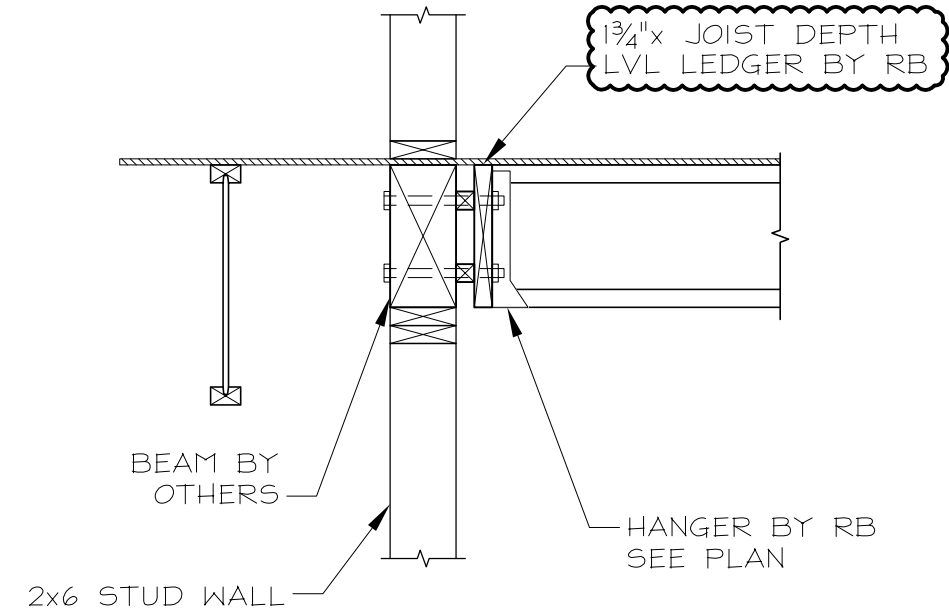
- STRAPS, ANCHORS, CLIPS, AND OTHER HARDWARE NOT SHOWN ARE TO BE PROVIDED BY OTHERS. HARDWARE SHOWN IS TO BE PROVIDED BY OTHERS UNLESS MARKED 'BY RB.' REFER TO THE CONTRACT DOCUMENTS FOR HARDWARE SPECIFICATIONS AND INSTALLATION INSTRUCTIONS.
- SEE I-JOIST INSTALLATION SHEET FOR WEB STIFFENER NAILING.
- FOR BEAMS SUPPLIED BY OTHERS, SEE CONTRACT DOCUMENTS FOR SPECIFICATIONS AND OTHER INFORMATION NOT SHOWN HEREIN.
- FOR ATTACHMENT OF SPRINKLER LINES, MECHANICAL DUCTS, ETC... TO JOISTS OR TRUSSES, PLEASE SEE "SPRINKLER SYSTEM INSTALLATION GUIDELINES". IF ADDITIONAL COPIES ARE REQUIRED, PLEASE CONTACT REDBUILT OR GO ONLINE TO: [HTTP://WWW.REDBUILT.COM](http://WWW.REDBUILT.COM)

				Providence Hall High School Herriman, UT		Details	
				DRAWN -	DATE -	CHECKED -	DATE -

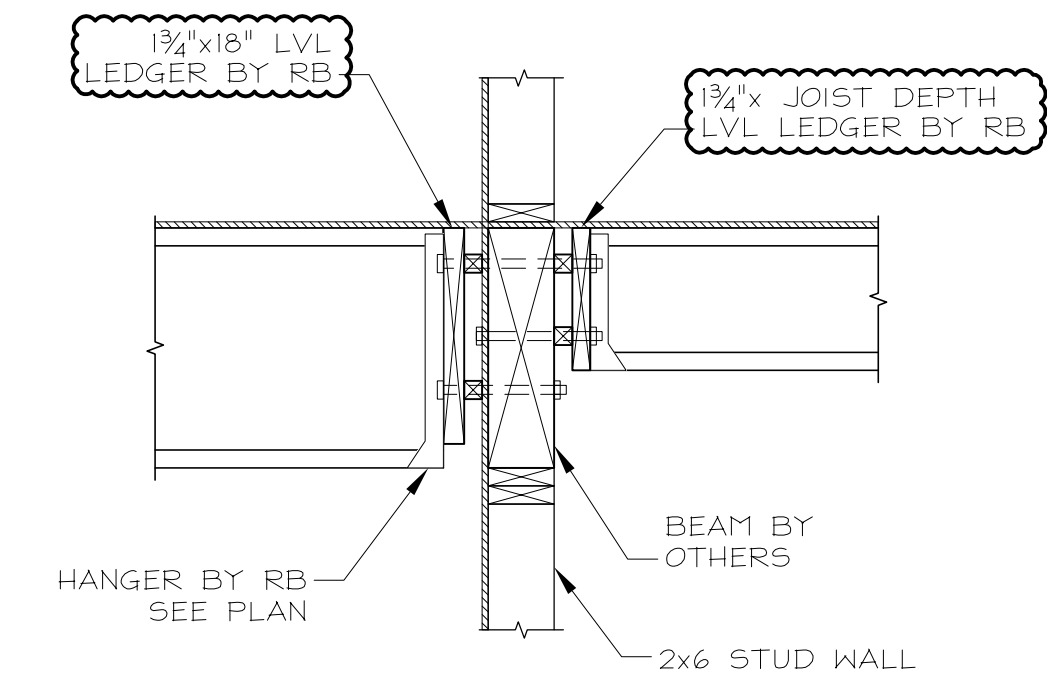
EOR, PLEASE REVIEW AND ADVISE IF DETAIL AS SHOWN IS ACCEPTABLE.



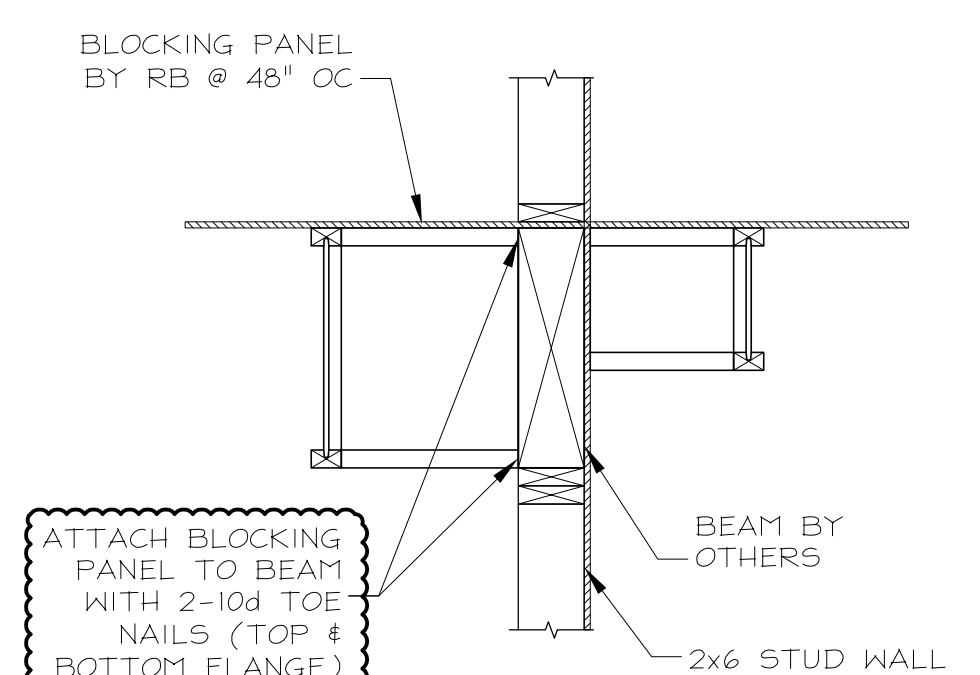
16
11
REF. 8/54.1 51M



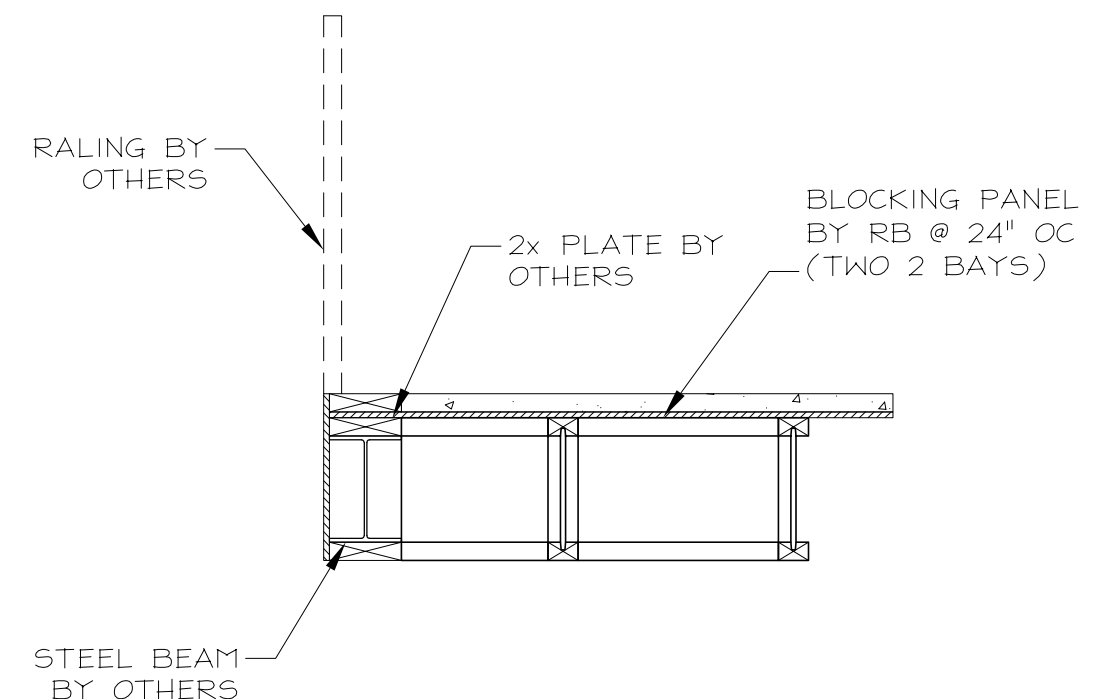
17
11
REF. 17/54.2



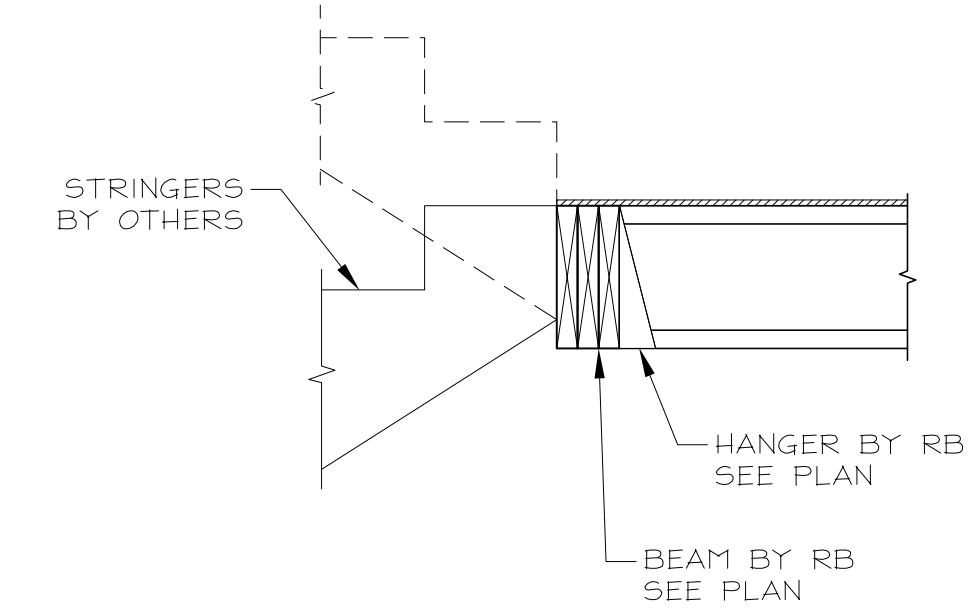
18
11
REF. 16/54.2



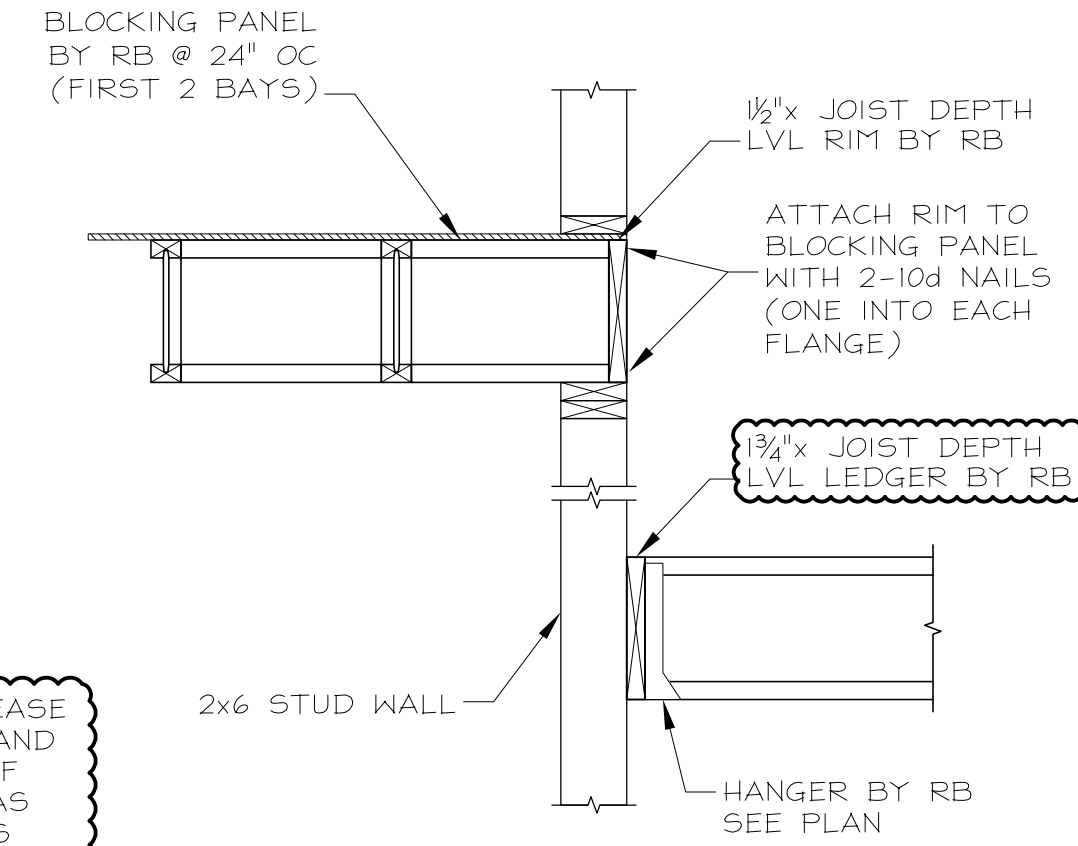
19
11
REF. 18/54.2



20
11
REF. 18/54.1

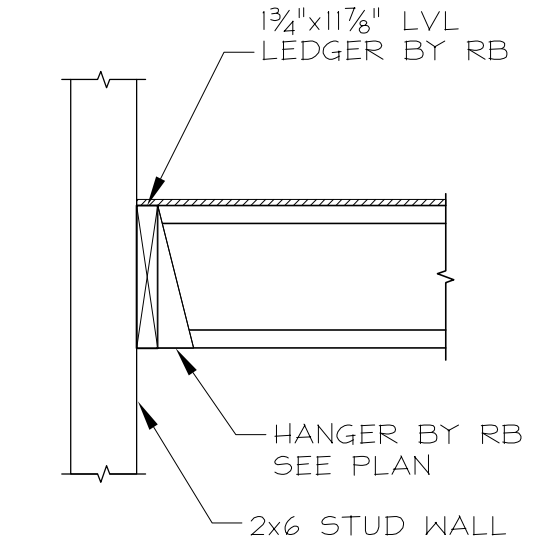


21
11
REF. 1/54.2 2/54.2

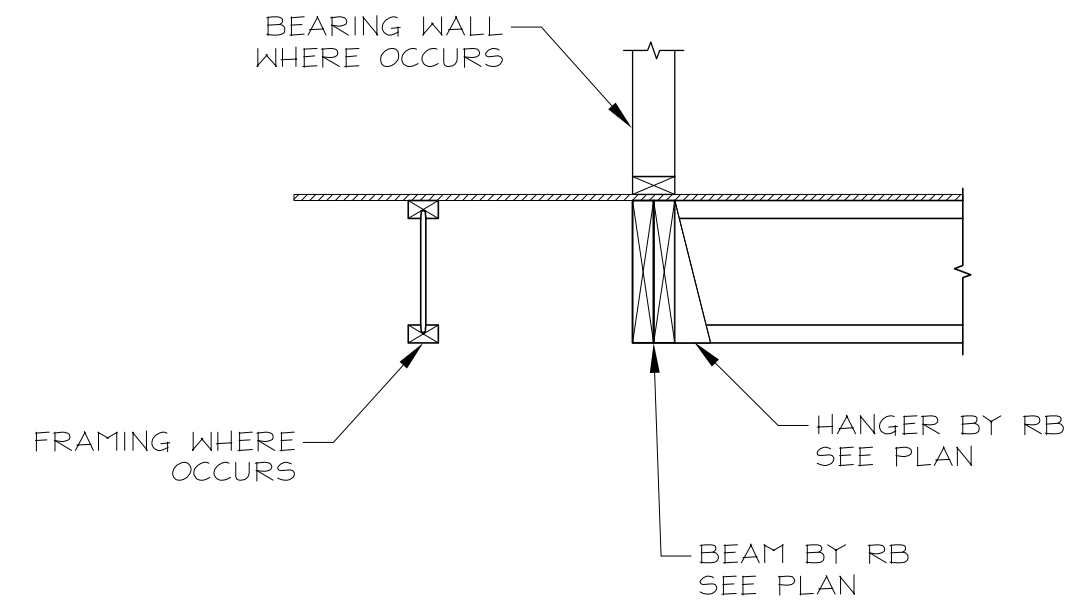


EOR, PLEASE REVIEW AND ADVISE IF DETAIL AS SHOWN IS ACCEPTABLE.

22
11
REF. 3/54.2 3/54.1 2/54.1

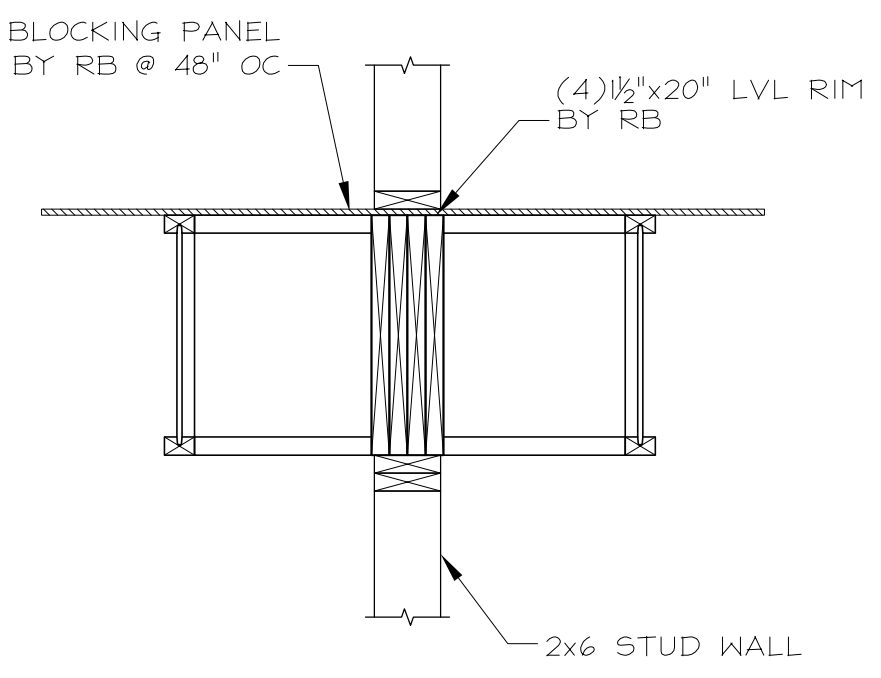


23
11
REF. 11/51.3

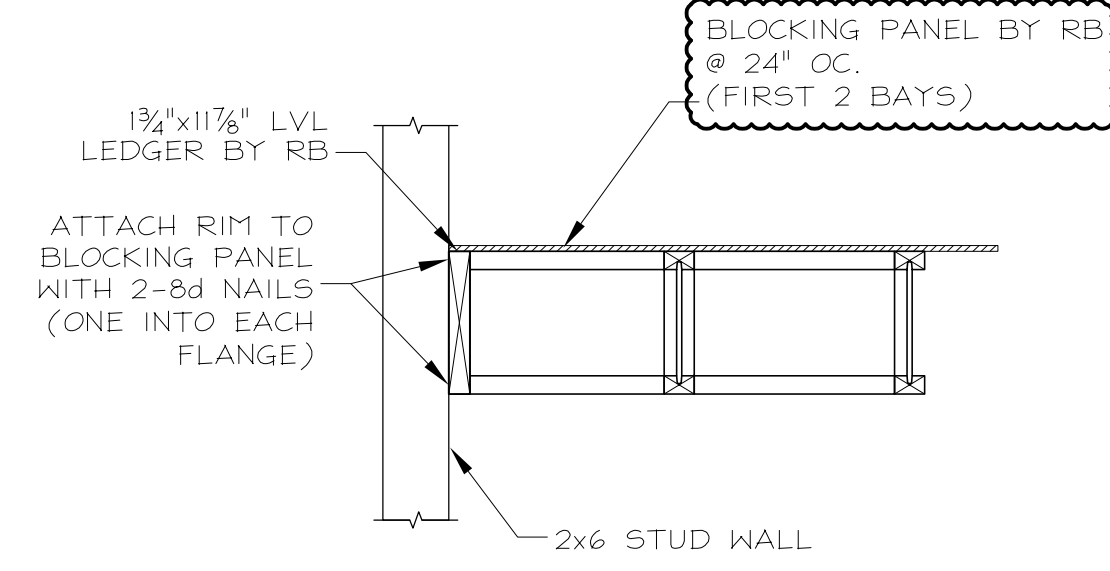


24
11
REF. 12/54.1 18/55.2

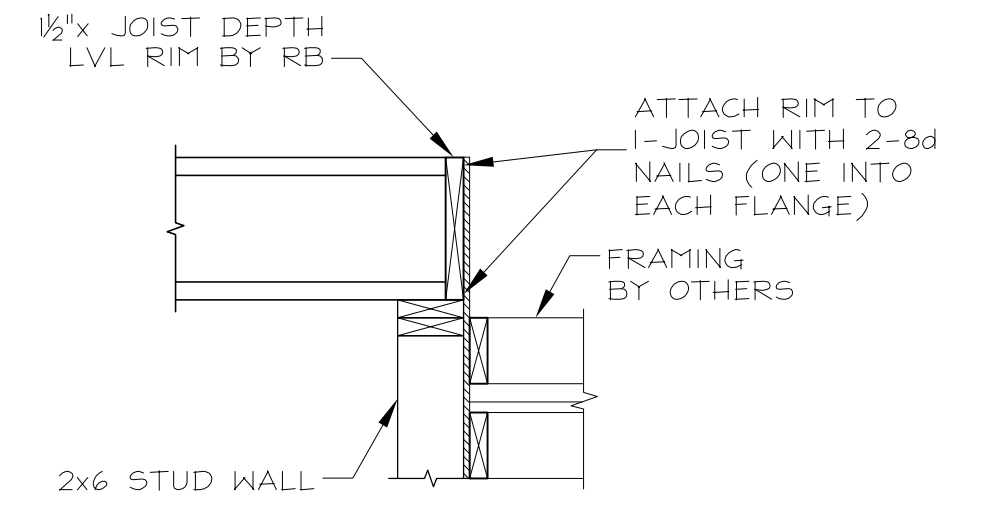
STRUCTURAL DEVIATION
STRUCTURAL DETAIL SHOWS A SINGLE PIECE DRAG STRUT OR RIM. (4) 1/2\"/>



25
11
REF. 6/53.3

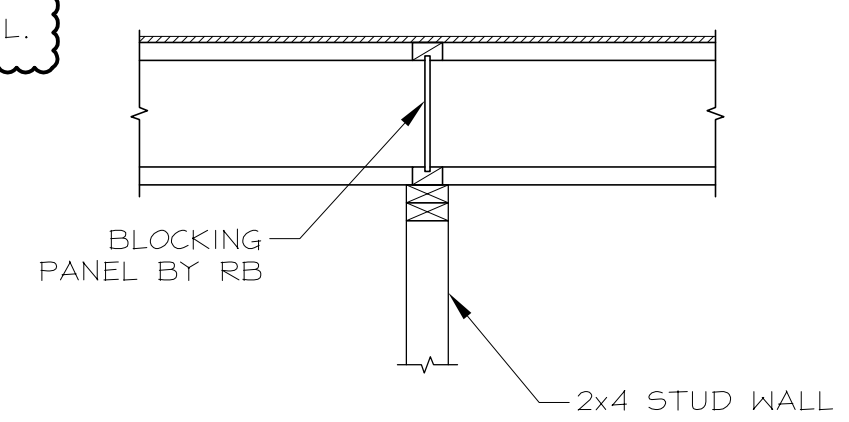


26
11
REF. 10/51.3

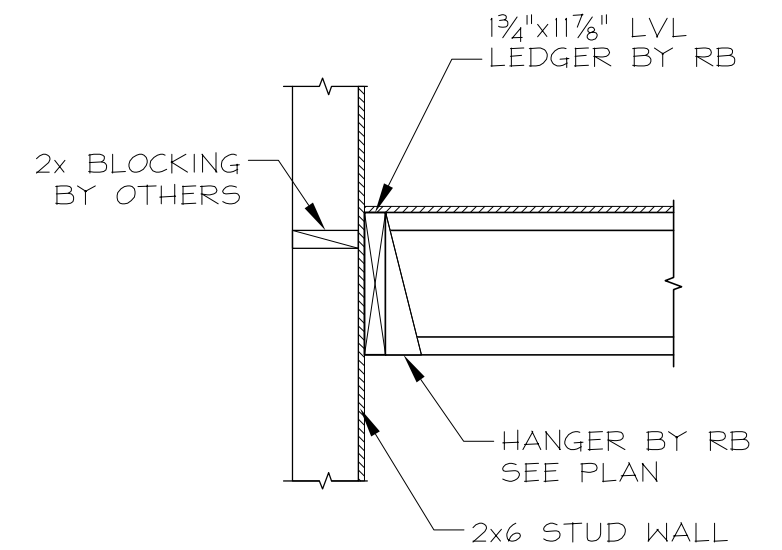


27
11
REF. 7/51.3

STRUCTURAL DEVIATION
STRUCTURAL DETAIL SHOWS SOLID BLOCKING. BLOCKING PANEL HAS BEEN ASSUMED. EOR TO REVIEW & APPROVE OR TO PROVIDE ALTERNATE DETAIL.

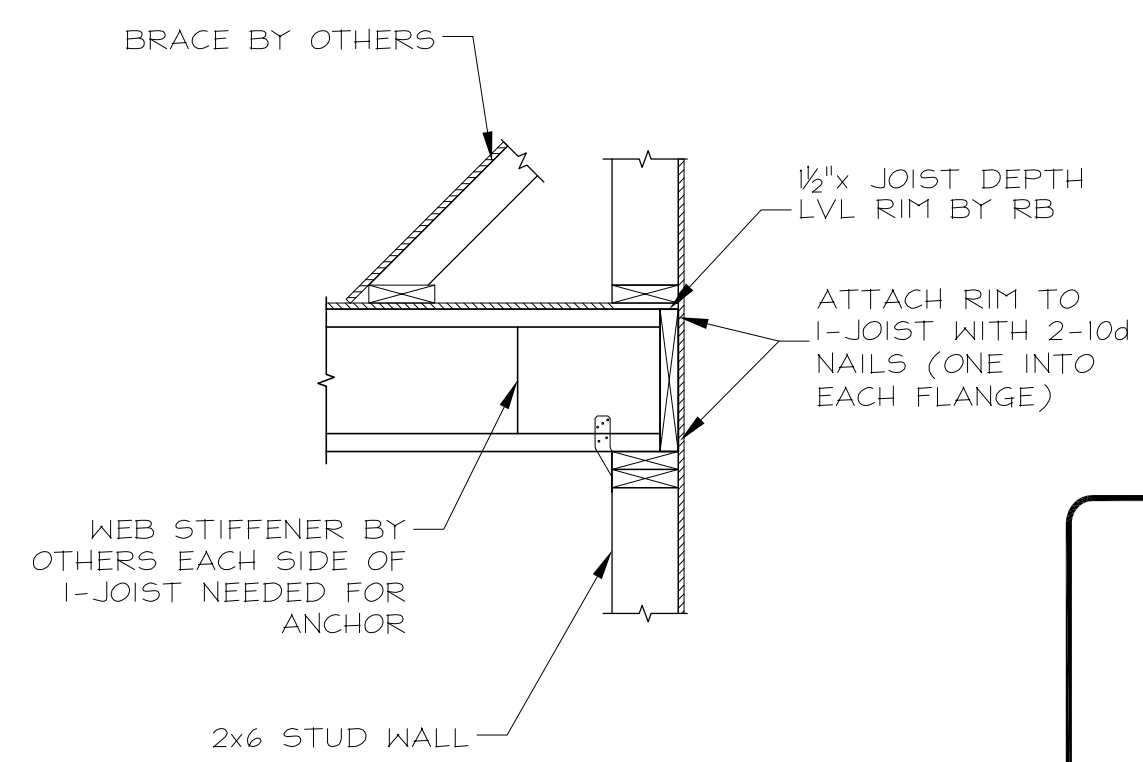


28
11
REF. 8/51.3



29
11
REF. 9/51.3

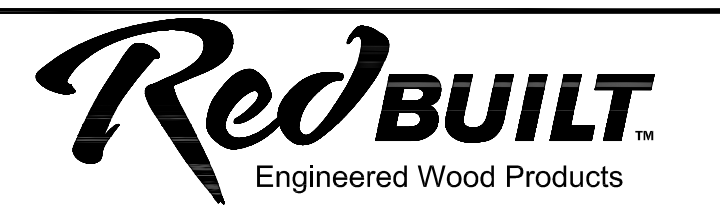
FOR APPROVAL ONLY
NOT FOR CONSTRUCTION



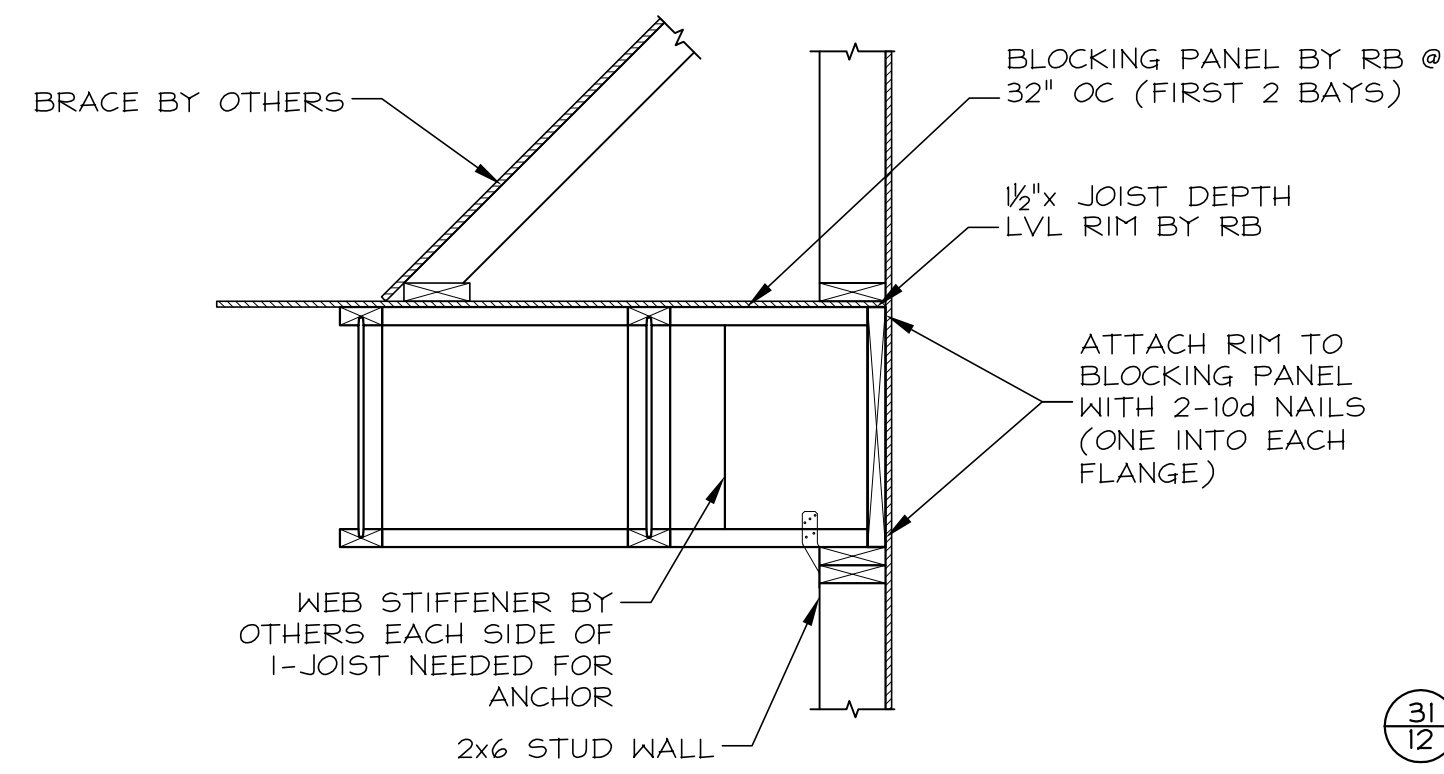
30
11
REF. 1/55.1

- STRAPS, ANCHORS, CLIPS, AND OTHER HARDWARE NOT SHOWN ARE TO BE PROVIDED BY OTHERS. HARDWARE SHOWN IS TO BE PROVIDED BY OTHERS UNLESS MARKED 'BY RB.' REFER TO THE CONTRACT DOCUMENTS FOR HARDWARE SPECIFICATIONS AND INSTALLATION INSTRUCTIONS.
- SEE I-JOIST INSTALLATION SHEET FOR WEB STIFFENER NAILING.
- FOR BEAMS SUPPLIED BY OTHERS, SEE CONTRACT DOCUMENTS FOR SPECIFICATIONS AND OTHER INFORMATION NOT SHOWN HEREIN.
- FOR ATTACHMENT OF SPRINKLER LINES, MECHANICAL DUCTS, ETC... TO JOISTS OR TRUSSES, PLEASE SEE "SPRINKLER SYSTEM INSTALLATION GUIDELINES". IF ADDITIONAL COPIES ARE REQUIRED, PLEASE CONTACT REDBUILT OR GO ONLINE TO: [HTTP://WWW.REDBUILT.COM](http://www.redbuilt.com)

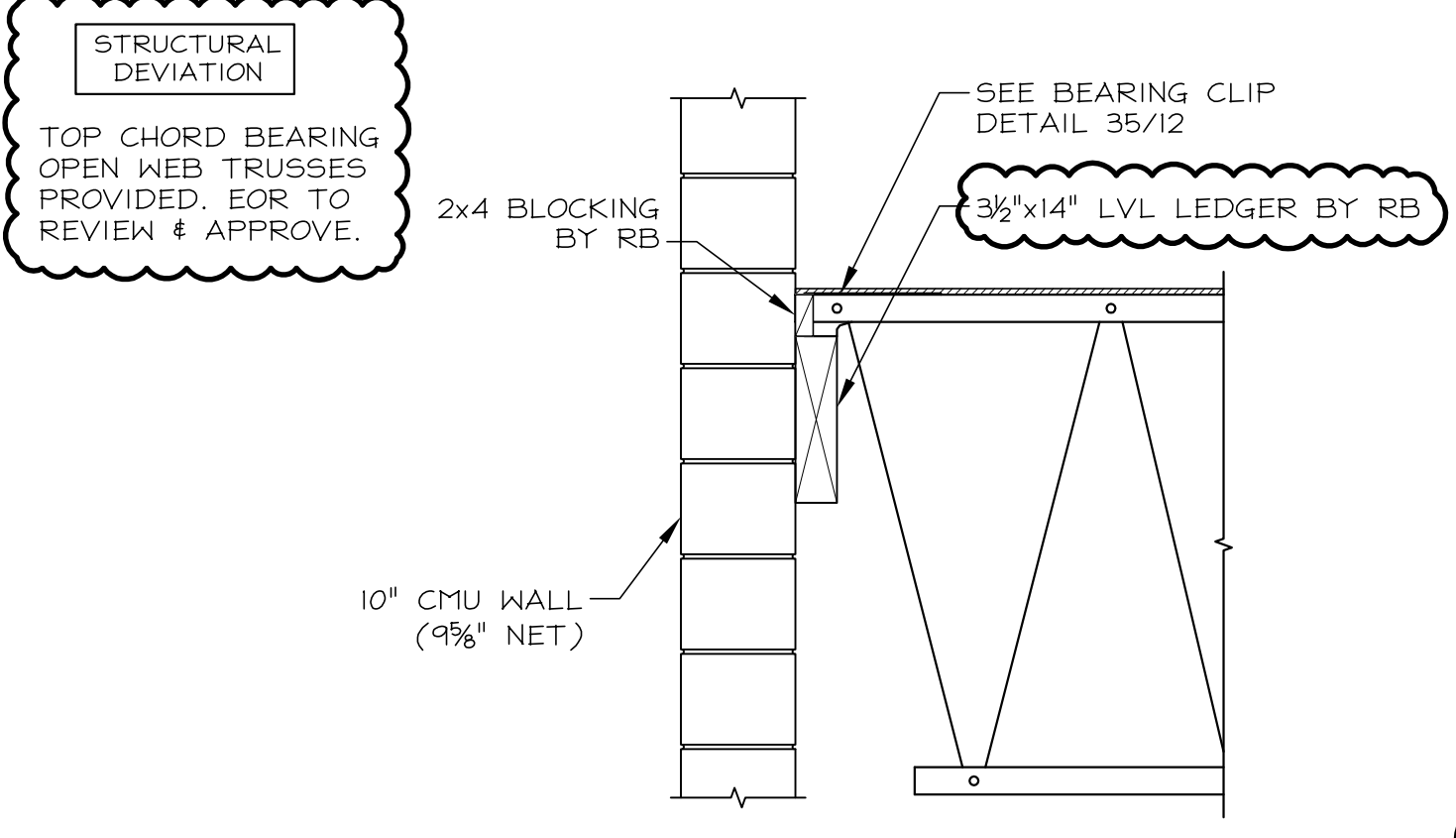
△			
△			
△	BY	DATE	REMARKS



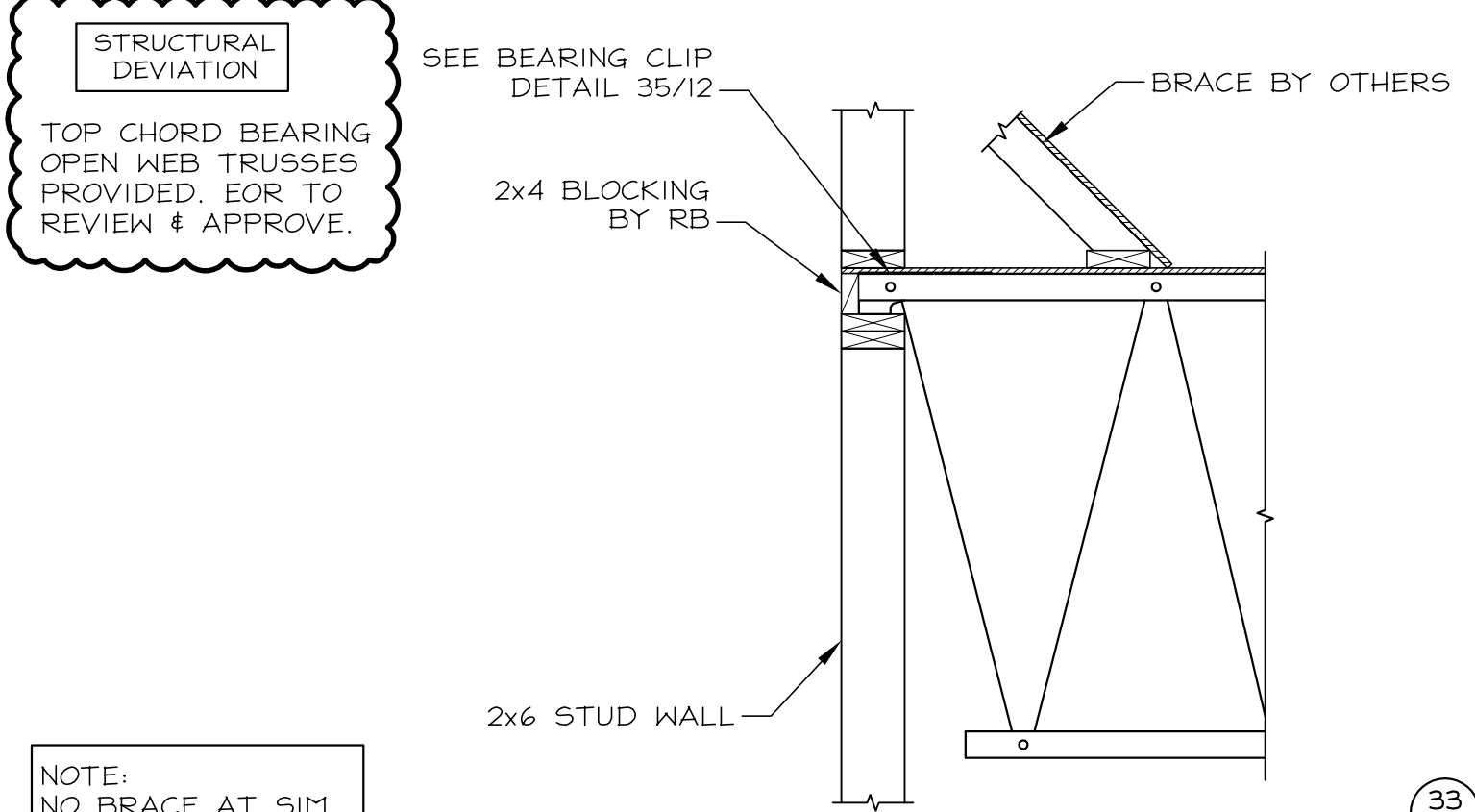
Providence Hall High School				Details	
Herriman, UT				ORDER #	SHEET
DRAWN	DATE	CHECKED	DATE	085264	11 of 13



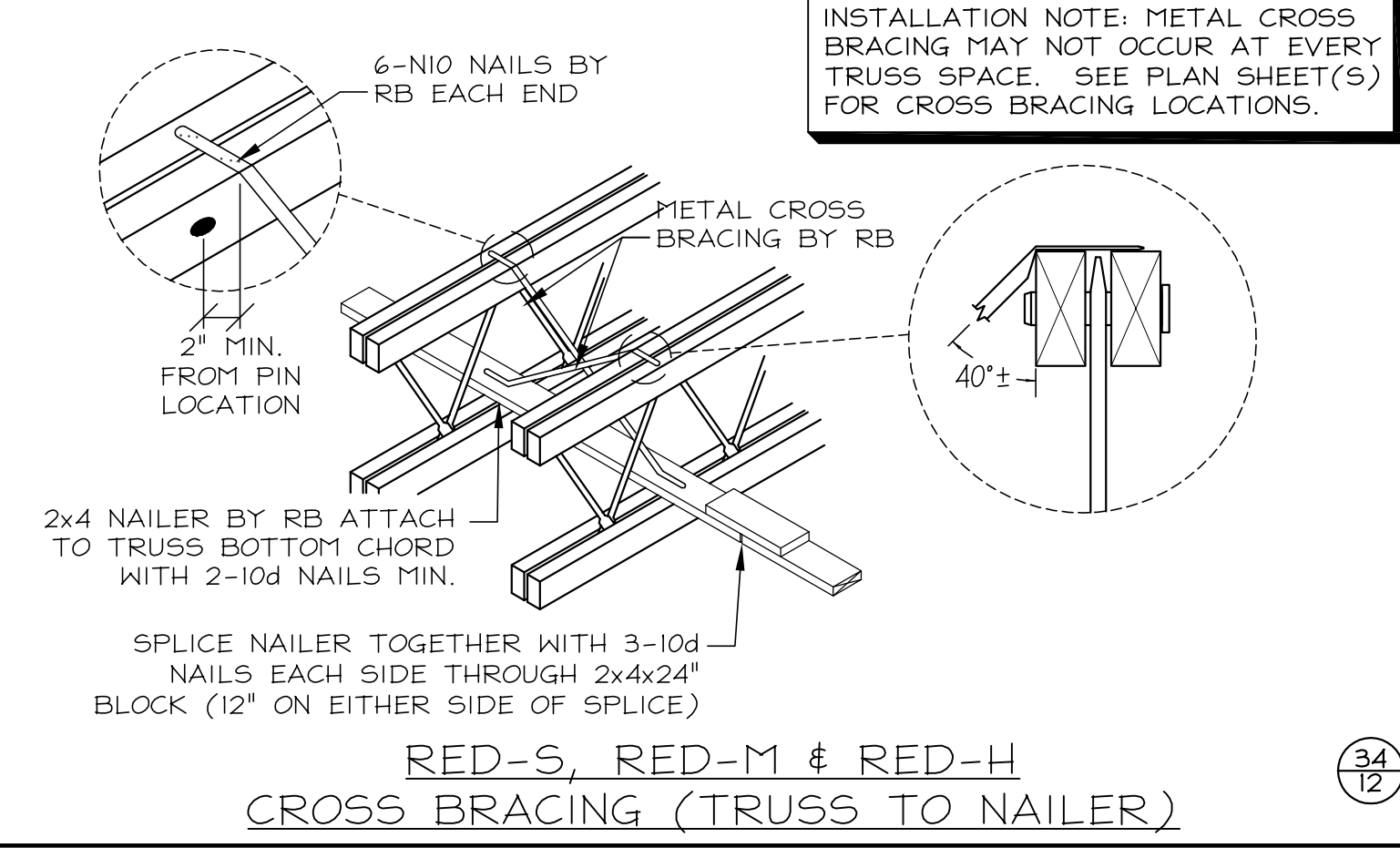
31
12
REF. 2/95.1



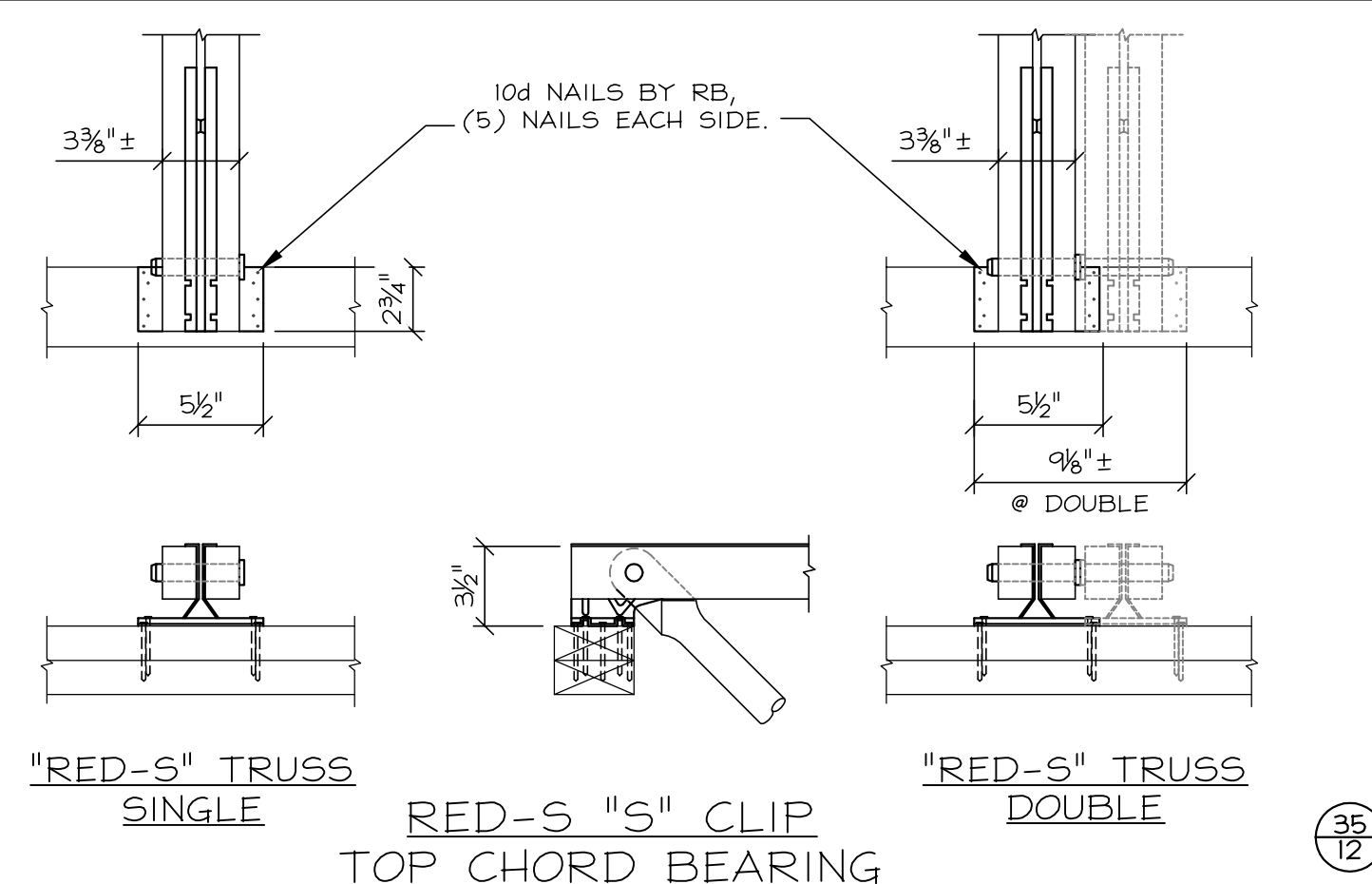
32
12
REF. 15/95.2



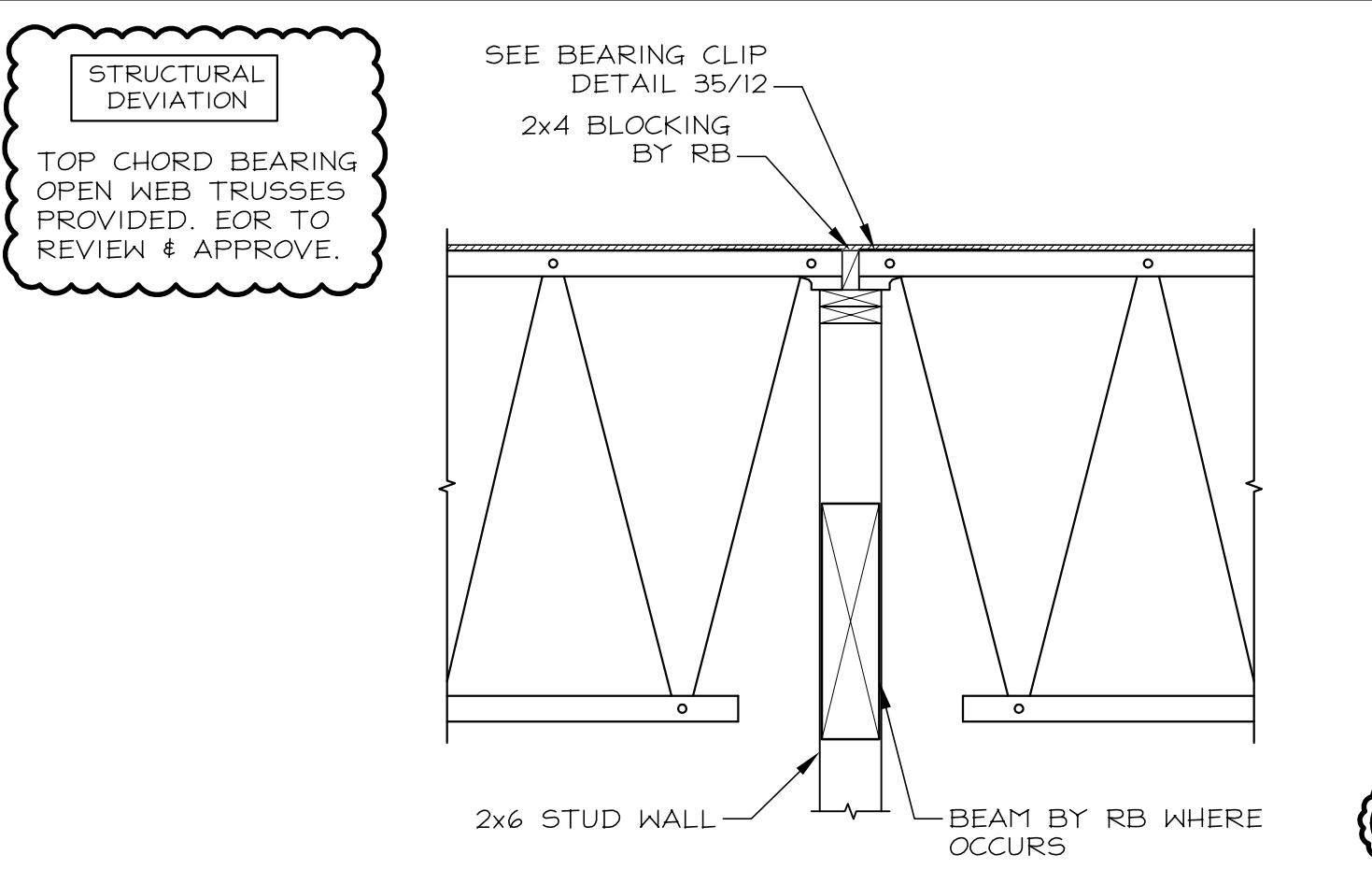
33
12
REF. 8/95.1



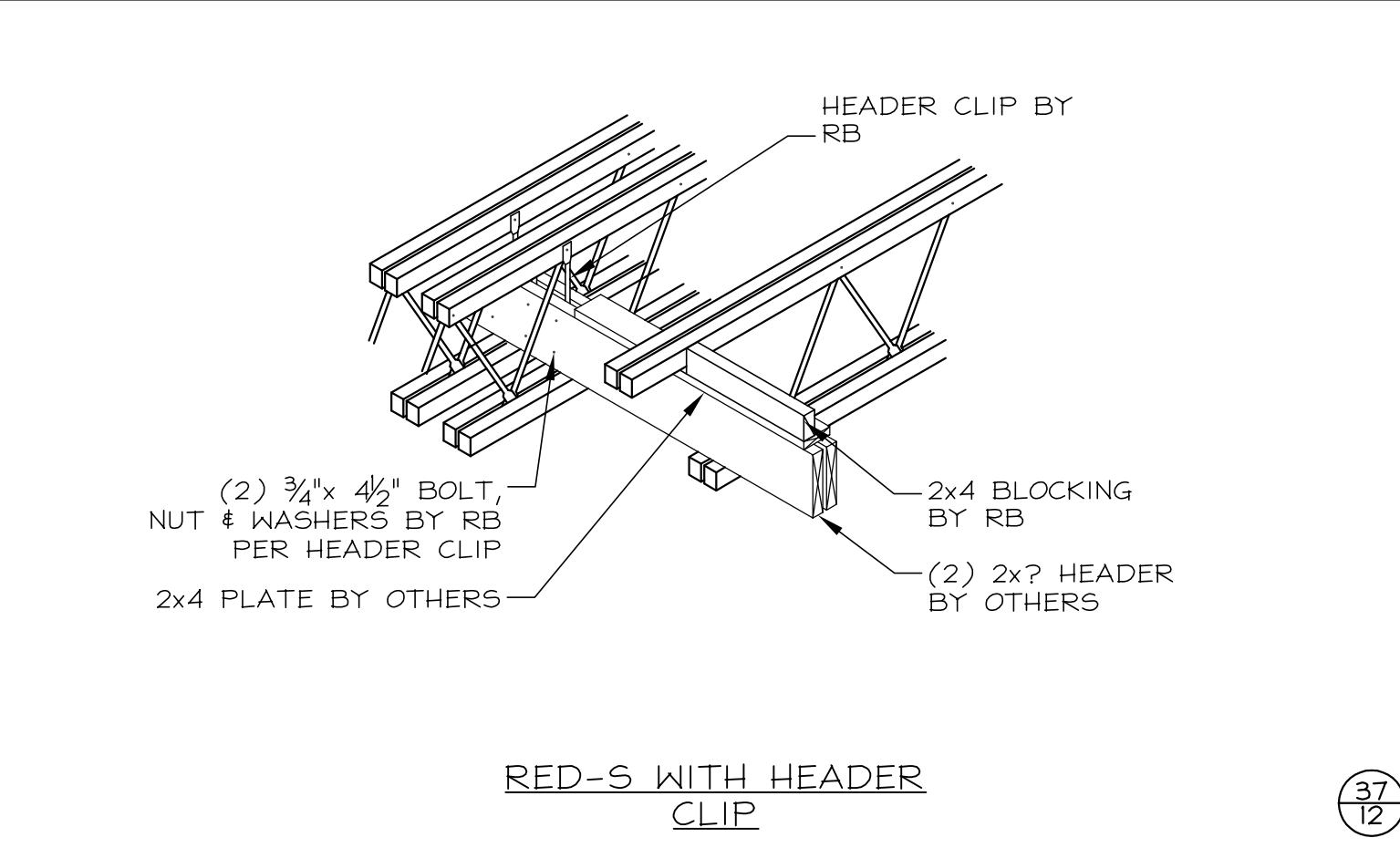
34
12



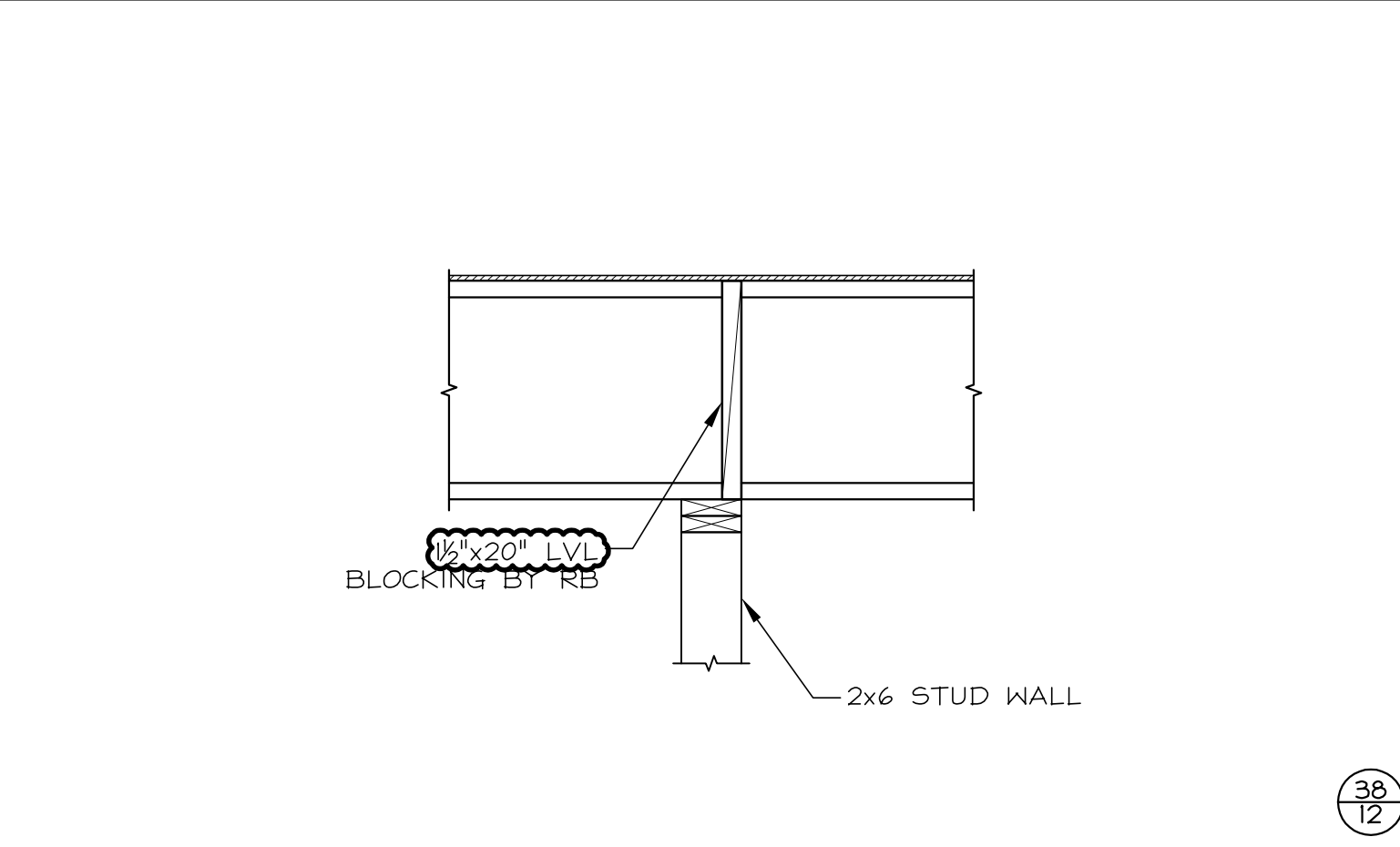
35
12



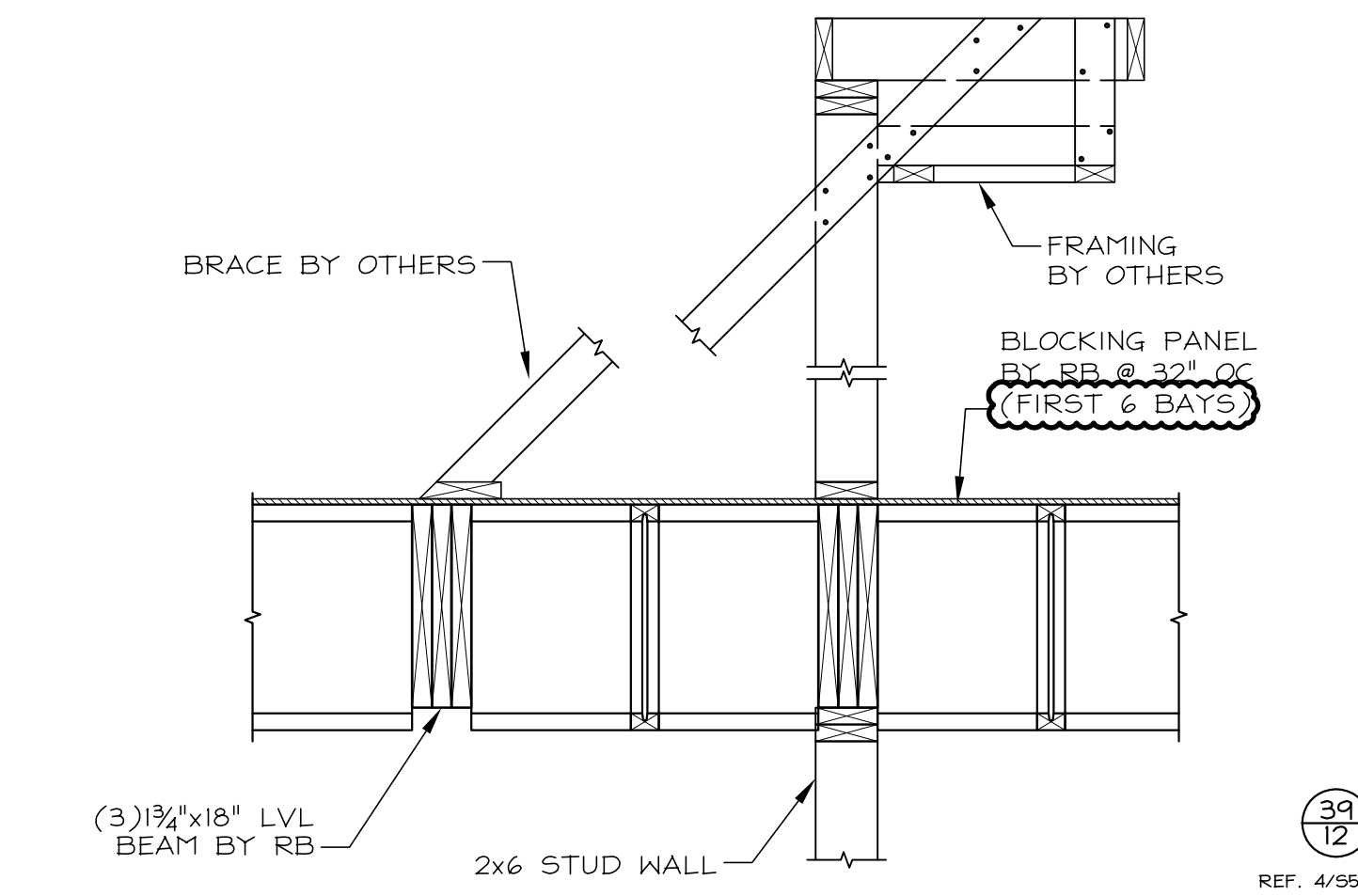
36
12



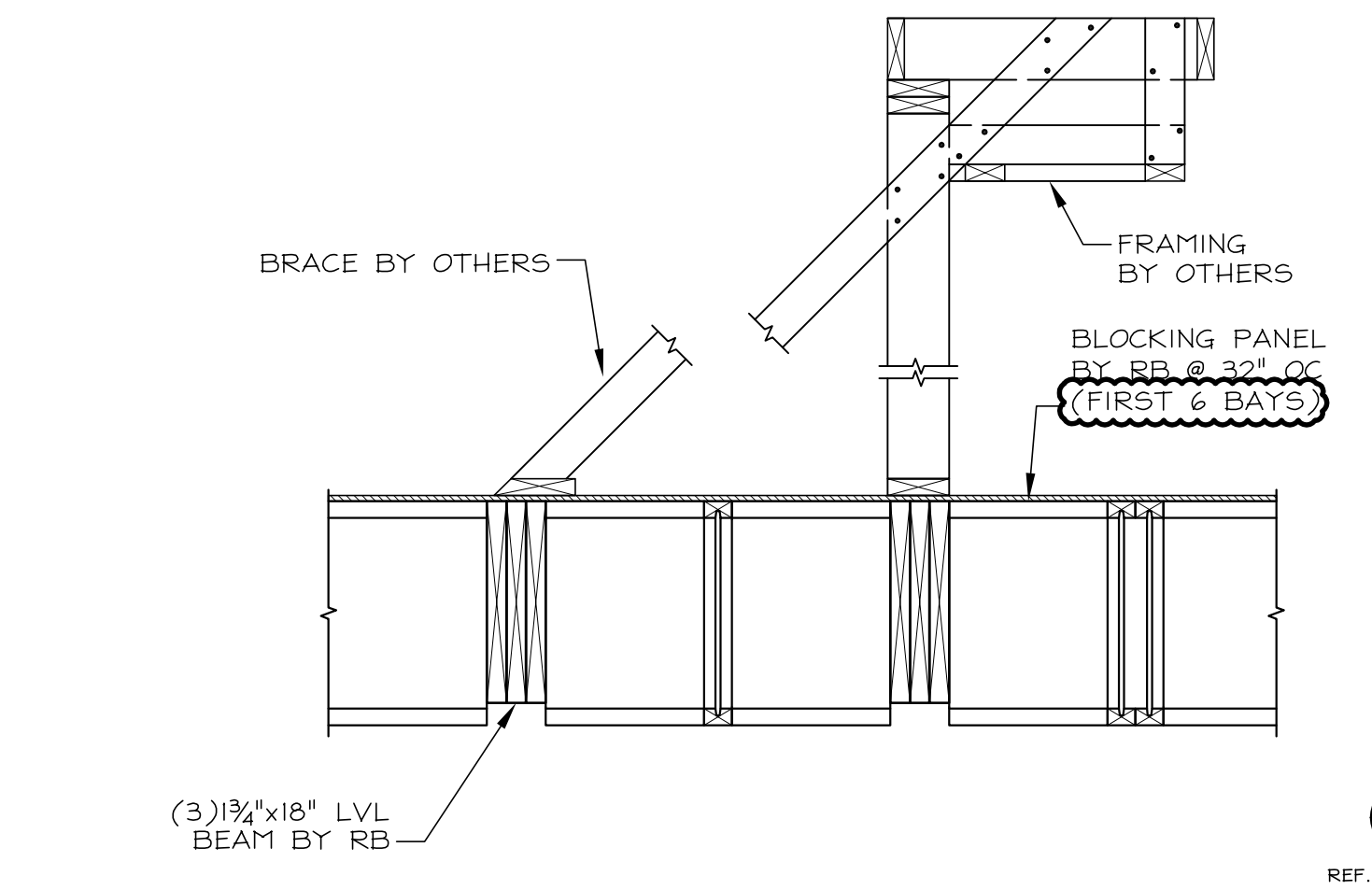
37
12



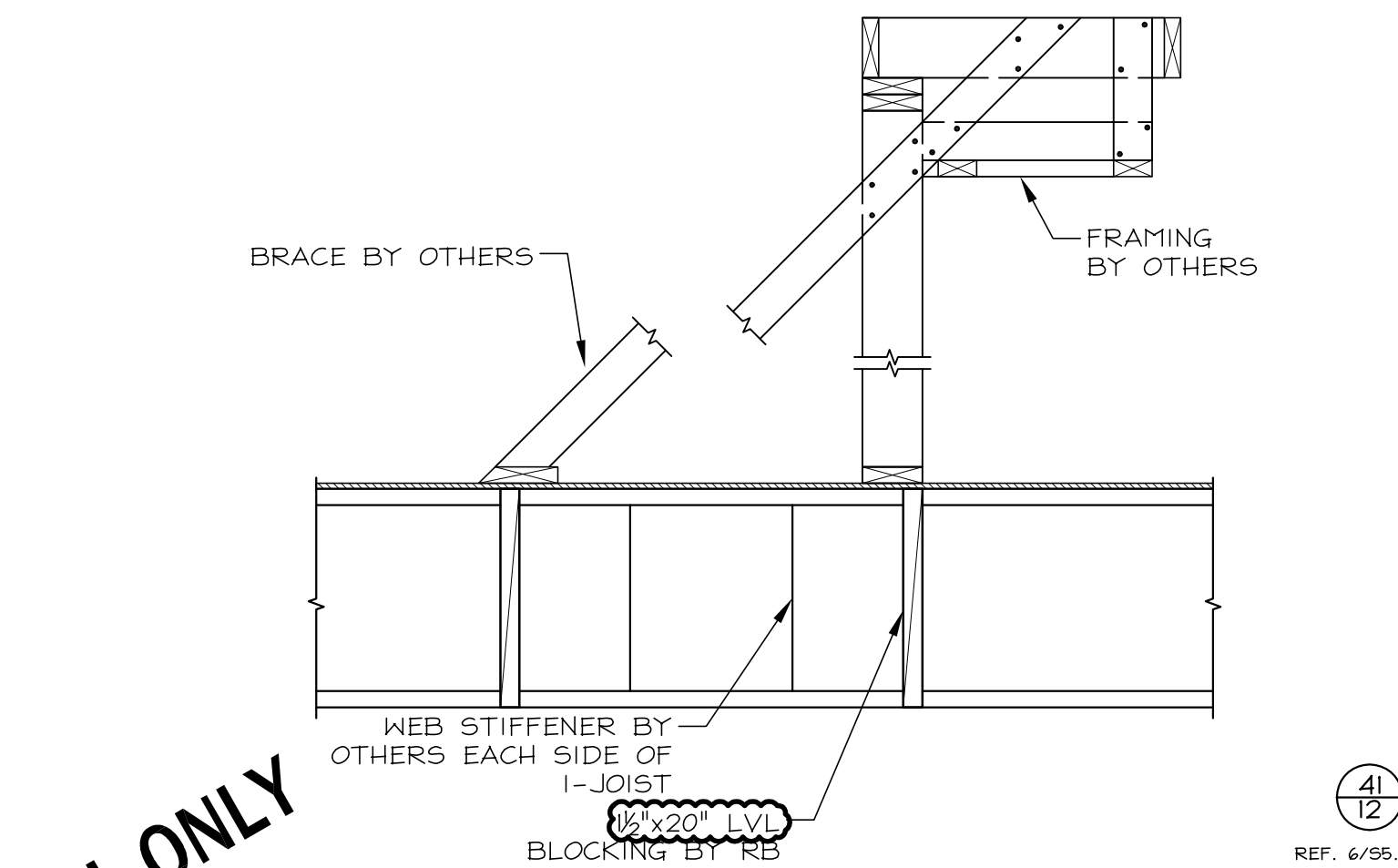
38
12
REF. 16/95.1



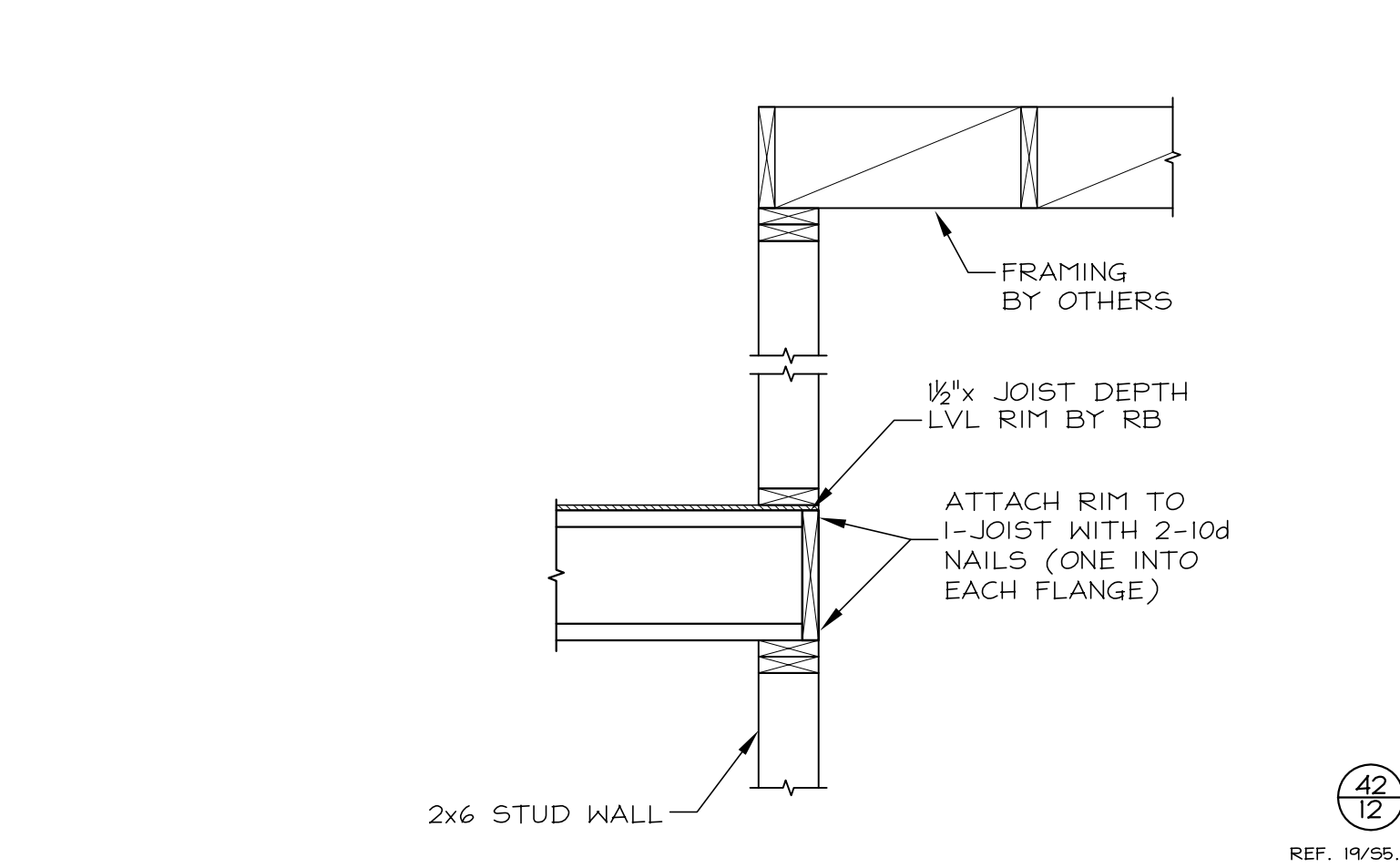
39
12
REF. 4/95.1



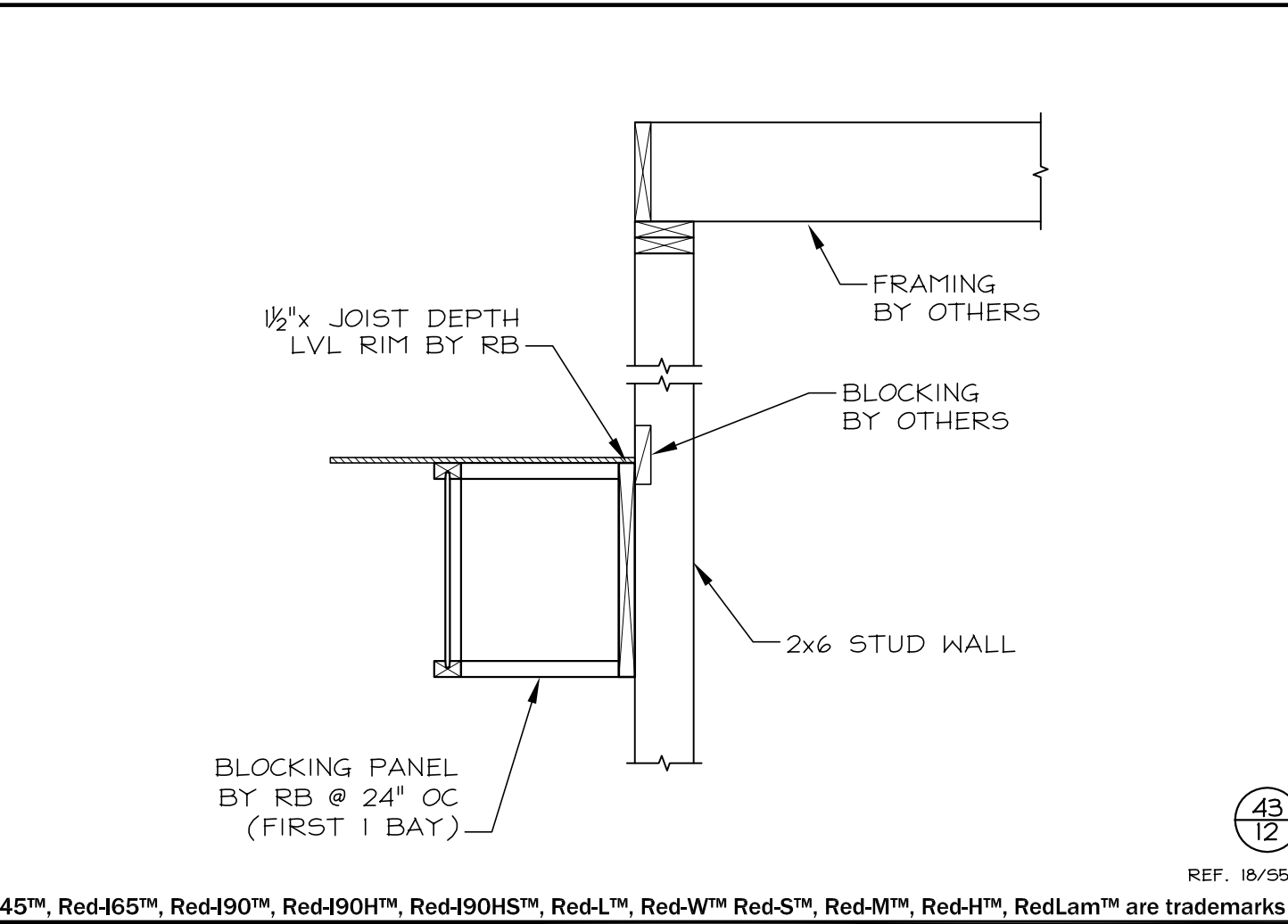
40
12
REF. 5/95.1



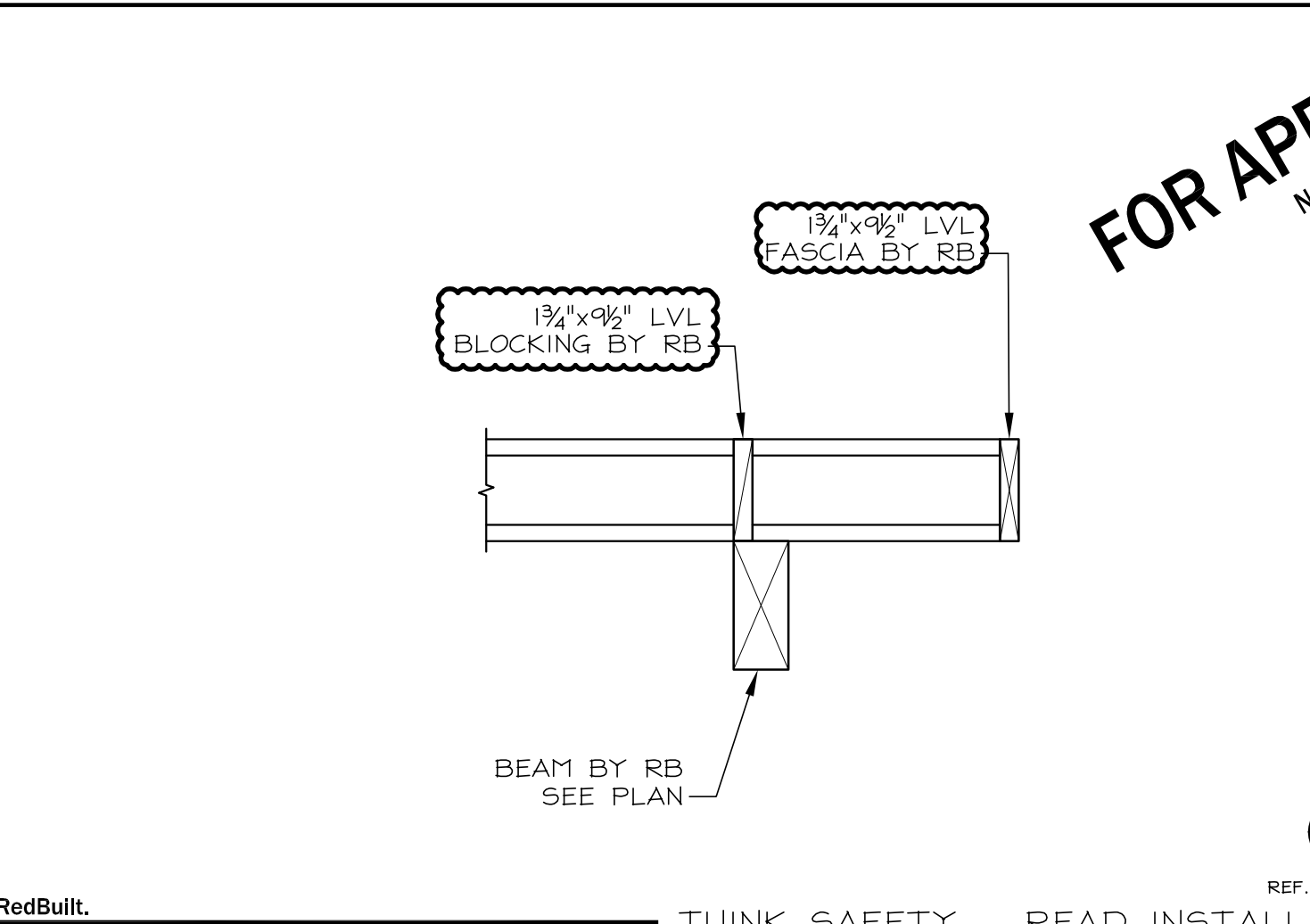
41
12
REF. 6/95.1



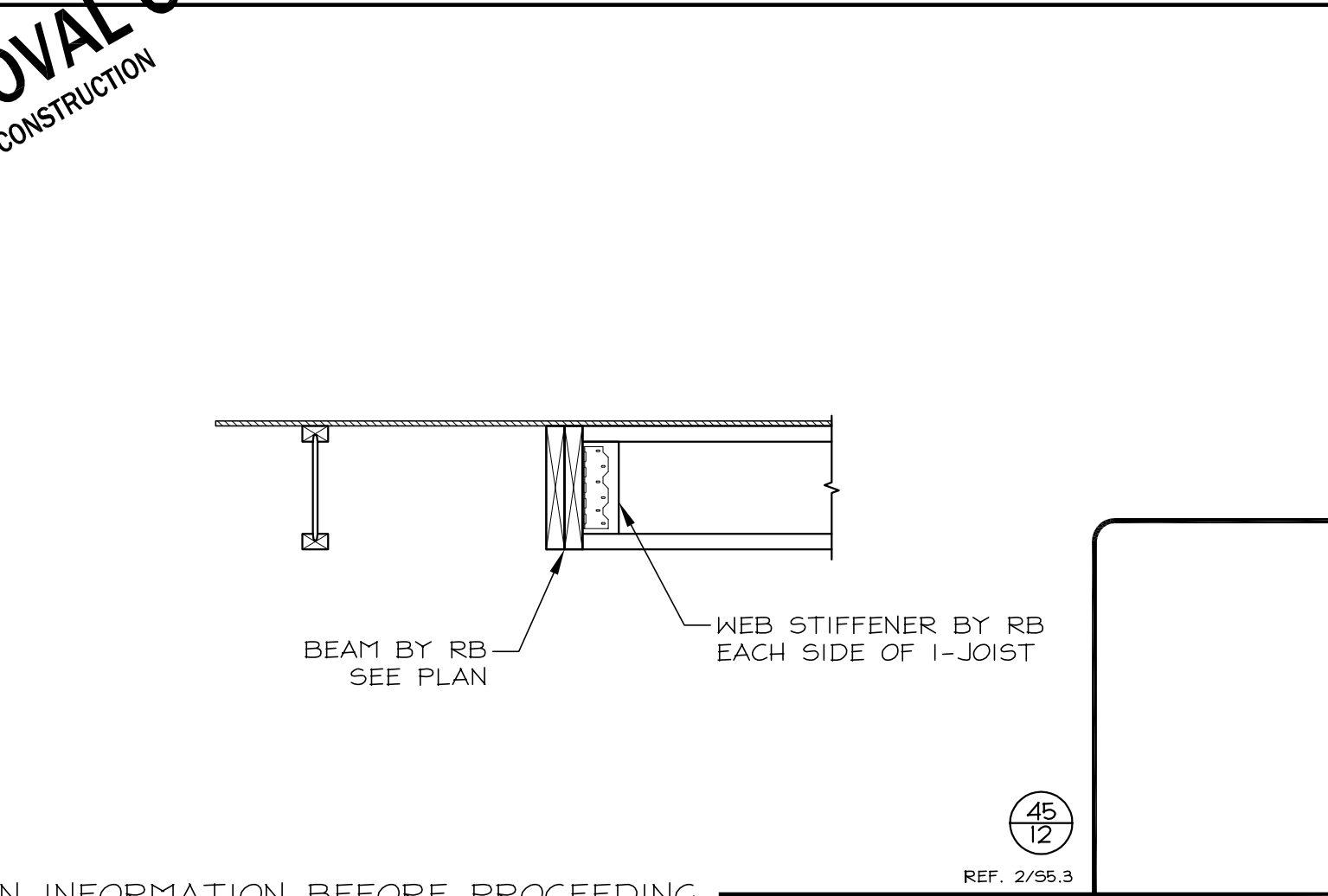
42
12
REF. 19/95.1



43
12
REF. 18/95.1



44
12
REF. 1/95.3



45
12
REF. 2/95.3

FOR APPROVAL ONLY
NOT FOR CONSTRUCTION

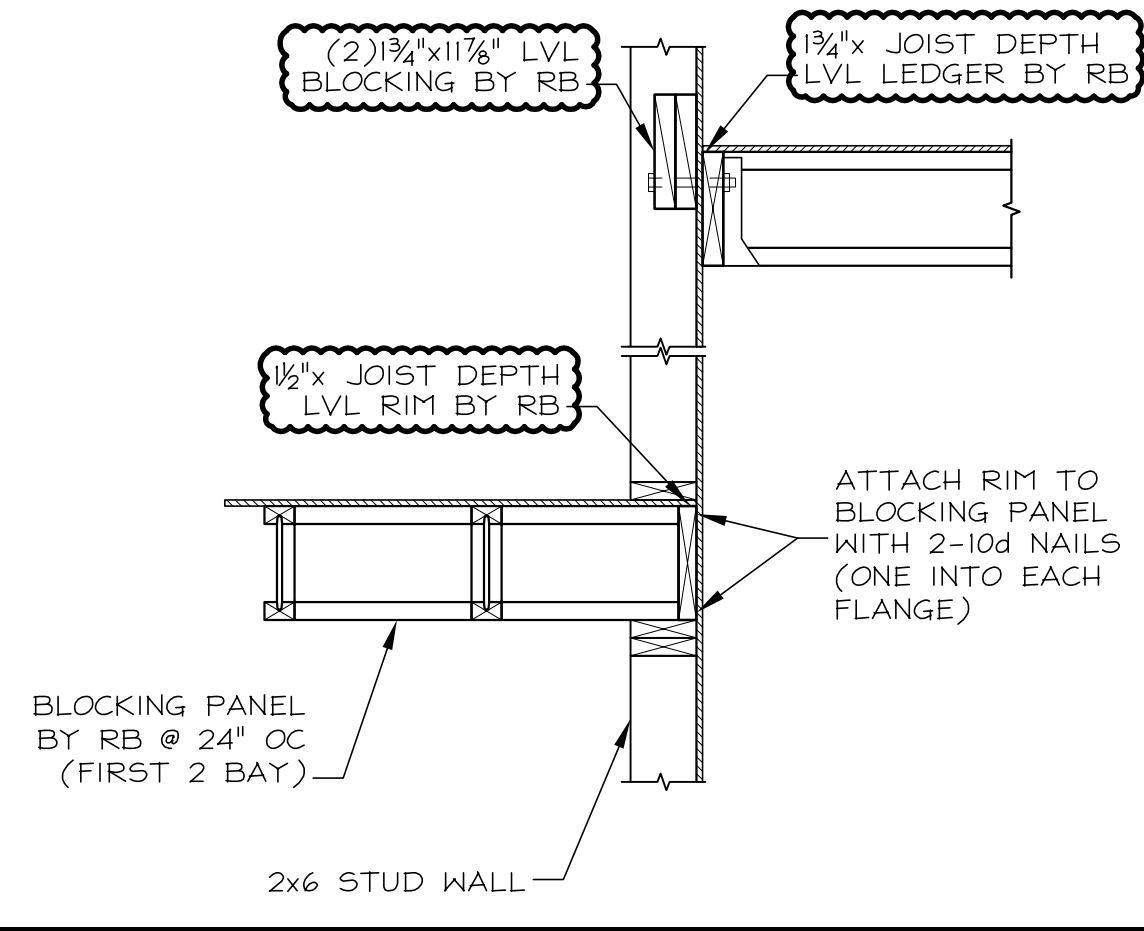
- STRAPS, ANCHORS, CLIPS, AND OTHER HARDWARE NOT SHOWN ARE TO BE PROVIDED BY OTHERS. HARDWARE SHOWN IS TO BE PROVIDED BY OTHERS UNLESS MARKED 'BY RB.' REFER TO THE CONTRACT DOCUMENTS FOR HARDWARE SPECIFICATIONS AND INSTALLATION INSTRUCTIONS.

- SEE I-JOIST INSTALLATION SHEET FOR WEB STIFFENER NAILING.

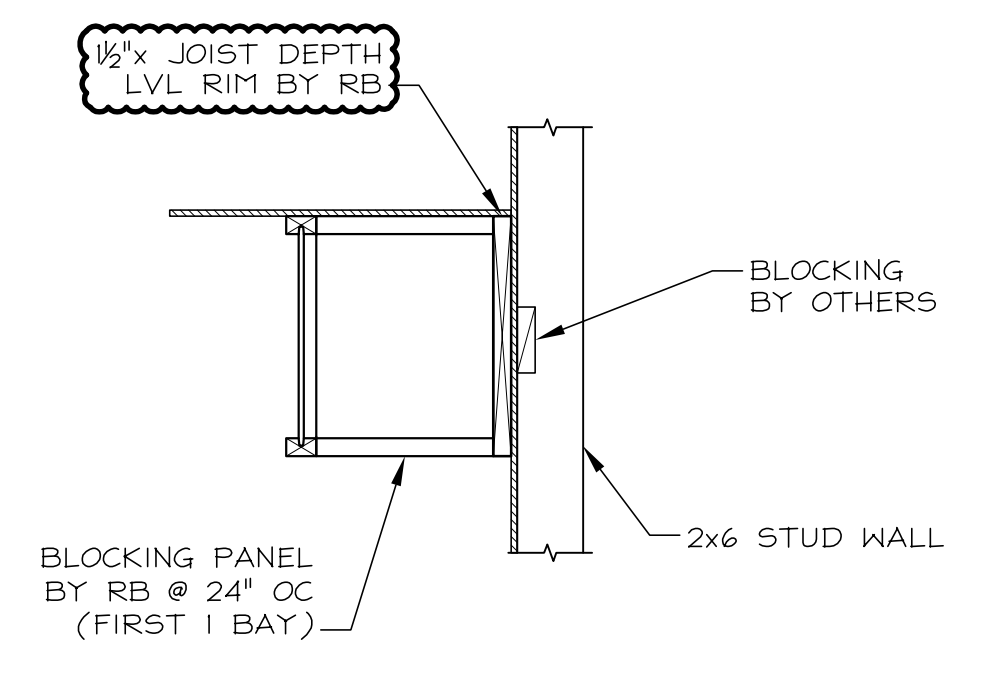
- FOR BEAMS SUPPLIED BY OTHERS, SEE CONTRACT DOCUMENTS FOR SPECIFICATIONS AND OTHER INFORMATION NOT SHOWN HEREIN.

- FOR ATTACHMENT OF SPRINKLER LINES, MECHANICAL DUCTS, ETC... TO JOISTS OR TRUSSES, PLEASE SEE "SPRINKLER SYSTEM INSTALLATION GUIDELINES". IF ADDITIONAL COPIES ARE REQUIRED, PLEASE CONTACT REDBUILT OR GO ONLINE TO: [HTTP://WWW.REDBUILT.COM](http://www.redbuilt.com)

				Providence Hall High School Herriman, UT		Details	
				DRAWN	DATE	CHECKED	DATE
BY	DATE	REMARKS					



46/13
REF. 4/95.3



47/13
REF. 11/95.1

48/13
REF. ---

49/13

50/13

51/13

52/13

53/13

54/13

55/13

56/13

57/13

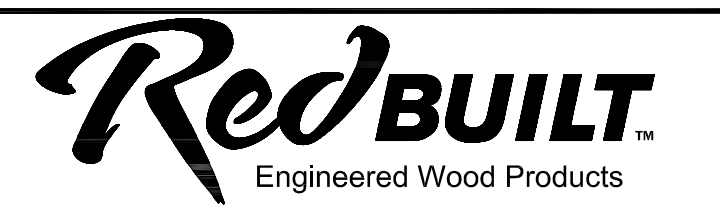
58/13

59/13

60/13

FOR APPROVAL ONLY
NOT FOR CONSTRUCTION

△			
△			
△			
△	BY	DATE	REMARKS



Providence Hall High School				Details	
Herriman, UT				ORDER #	SHEET
				085264	13 of 13
DRAWN	DATE	CHECKED	DATE		
-	-				

GENERAL NOTES & LEGEND

DESIGN CONSIDERATIONS

BUILDING CODE:	2012 IBC
FLOOR DESIGN	
FLOOR LIVE LOAD (CLASSROOM):	40 PSF
DEAD LOAD:	30 PSF
PARTITION LOAD:	15 PSF
CORRIDOR LOAD:	100 PSF
ASSEMBLY PLATFORM:	100 PSF

DRAWING NOTES & LEGEND

- FOR TYPICAL NOTES, STANDARD DETAILS, AND ABBREVIATIONS, SEE INSTALLATION COVERSHEET(5).

XX(##)

- DENOTES PRODUCT CALLOUT AND QUANTITY ON PLAN.
- "XX" - STRUCTURAL MEMBER TYPE CALLOUT
- "##" - QUANTITY OF STRUCTURAL MEMBERS IN BAY

I-JOIST NOTES & LEGEND

- ALL I-JOISTS WILL BE SENT LONG TO BE FIELD TRIMMED UNLESS MARKED "PET" ON MATERIAL LIST.

#

- DENOTES CONTINUOUS HANGER TYPE. SEE HANGER INFO.

RECTANGULAR SECTION NOTES & LEGEND

M?

- DENOTES LOCATION OF BEAM OR COLUMN BY RB. SEE MATERIAL LIST FOR MORE INFORMATION.

- ALL LVL BEAMS AND ASSOCIATED HARDWARE PROVIDED BY REDBUILT ARE AS SPECIFIED ON THE CONTRACT DRAWINGS. SPECIFICATIONS AND SIZE HAVE NOT BEEN VERIFIED BY REDBUILT ENGINEERING UNLESS OTHERWISE NOTED.

- NAIL DOUBLE MULTIPLE PIECES TOGETHER WITH A MINIMUM OF 2 ROWS OF 16d NAILS AT 6" OC (STAGGERED). SPECIFIED NAILING IS FROM EACH SIDE.

- NAIL TRIPLE MULTIPLE PIECES TOGETHER WITH A MINIMUM OF 2 ROWS OF 16d NAILS AT 4" OC (STAGGERED). SPECIFIED NAILING IS FROM EACH SIDE.

THIRD PARTY PRODUCTS

G?

- DENOTES LOCATION OF GLULAM BEAM. SEE MATERIAL LIST FOR MORE INFORMATION.

- ALL GLULAM BEAMS PROVIDED BY REDBUILT ARE AS SPECIFIED ON THE CONTRACT DRAWINGS. SPECIFICATIONS AND SIZE HAVE NOT BEEN VERIFIED BY REDBUILT ENGINEERING UNLESS OTHERWISE NOTED.

KEY NOTES

- STRUCTURAL DRAWINGS DON'T SHOW OPENING AT MECH. DUCTS CHASES. EOR PLEASE REVIEW AND ADVISE.
- FIELD LOCATE I-JOIST TO ENSURE PROPER FIT AND BEARING.
- BEAM WIDTH IS TOO NARROW TO ALLOW FOR HANGER INSTALLATION ON EA SIDE. EOR TO REVIEW AND ADVISE.
- WALL ABOVE LOAD 150 PLF DL. EOR TO REVIEW AND ADVISE IF LOAD AS SHOWN IS ACCEPTABLE.
- STRUCTURAL DRAWINGS DON'T SHOW BEAM DIMENSION. PLEASE REVIEW AND ADVISE IS THE DIMENSION ASSUMED IS ACCEPTABLE.

- ALL ITEMS "CLOUDED" MUST BE MARKED AS OK OR CORRECT INFORMATION PROVIDED.

PROJECT ASSUMPTIONS
 - ALL MISCELLANEOUS ITEMS (SPRINKLER LINES, SOFFITS, ELECTRICAL CONDUITS, ETC.) ARE ASSUMED TO BE INCLUDED IN THE UNIFORM DESIGN DEAD LOAD, UNLESS SPECIFICALLY SHOWN OTHERWISE ON THESE SHOP DRAWINGS.
 - ALL OPENINGS (DUCTWORK, PLUMBING, ETC.) ARE ASSUMED TO FIT BETWEEN REGULAR ON-CENTER SPACING AS SHOWN, UNLESS SPECIFICALLY SHOWN OTHERWISE ON THESE SHOP DRAWINGS.

CONTRACTOR/ENGINEER OF RECORD - PLEASE VERIFY THESE ASSUMPTIONS ARE ACCEPTABLE, OR CORRECT AS NEEDED. IF NO CORRECTIONS ARE MADE TO ASSUMPTIONS, RB WILL MANUFACTURE PRODUCT WITH THE INFORMATION SHOWN ON THESE SHOP DRAWINGS.

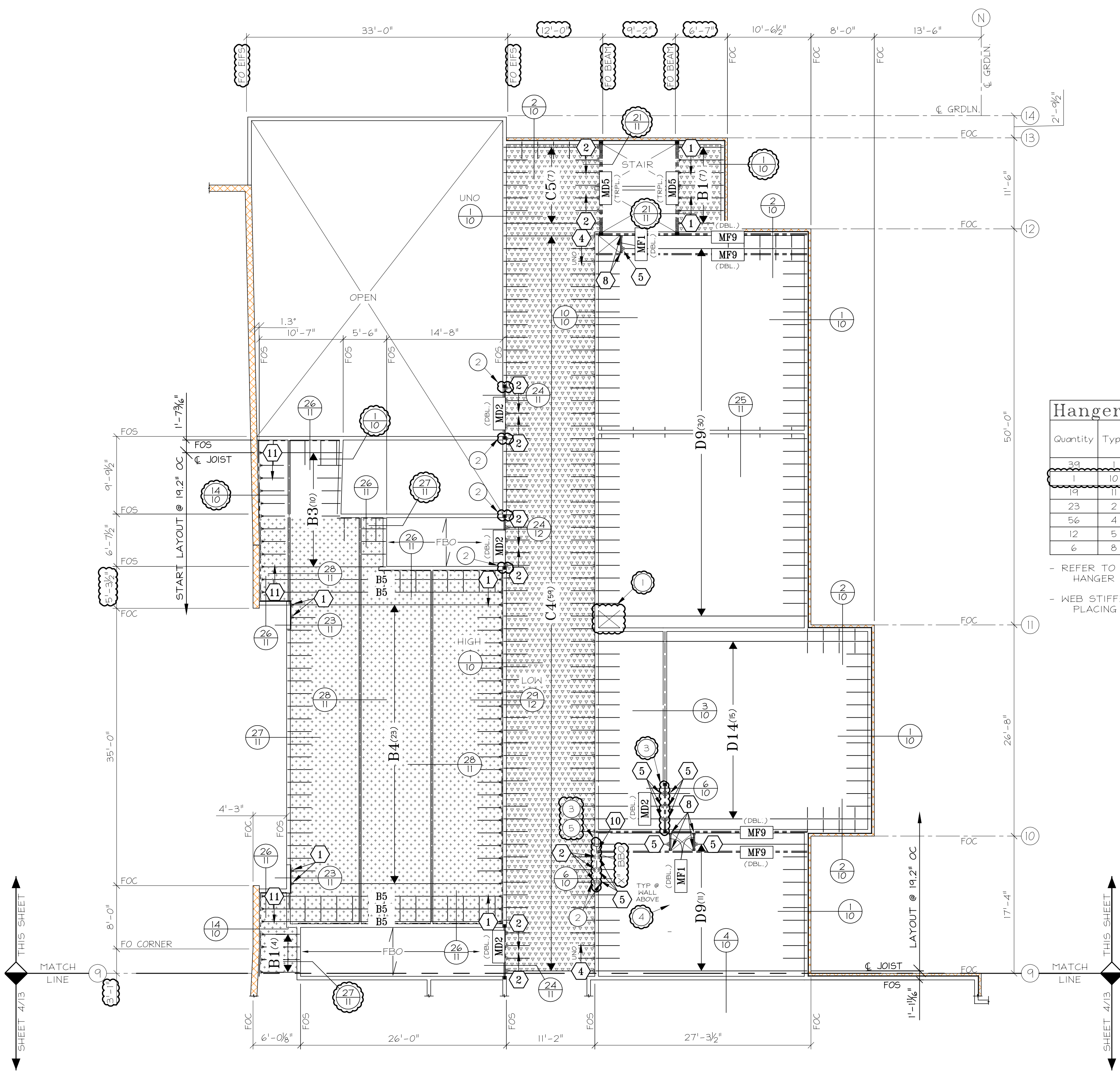
FOR: PLEASE REVIEW AND ADVISE IF HANGERS AS SHOWN ARE ACCEPTABLE.

Hangers

Quantity	Type	Model	Nailing			Modifications	Finish	Web Stiffeners Required	Note
			Top	Face	Member				
39	I	IT51.81/11.88	4-N10	2-N10					
10	I	HU414	24-N10	12-10d					
19	II	IT51.81/11.88	4-10d	4-10d	4-N10		✓		
23	2	BA3.56/11.88	6-10d	10-10d	2-N10				
56	4	MIU3.56/11	-	20-N10	2-N10				
12	5	MIT420	4-10d	4-10d	2-N10		✓		
6	8	U414	-	16-16d	6-10d				

- REFER TO CURRENT SIMPSON STRONG TIE® LITERATURE FOR HANGER SPECIFIC INSTALLATION INSTRUCTIONS.

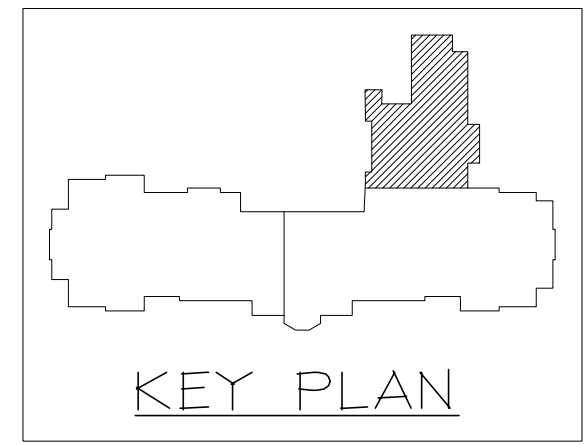
- WEB STIFFENERS IF REQUIRED MUST BE ATTACHED BEFORE PLACING JOIST IN HANGER.



PRODUCT TYPE CHART
 SEE MATERIAL LIST FOR MORE INFORMATION

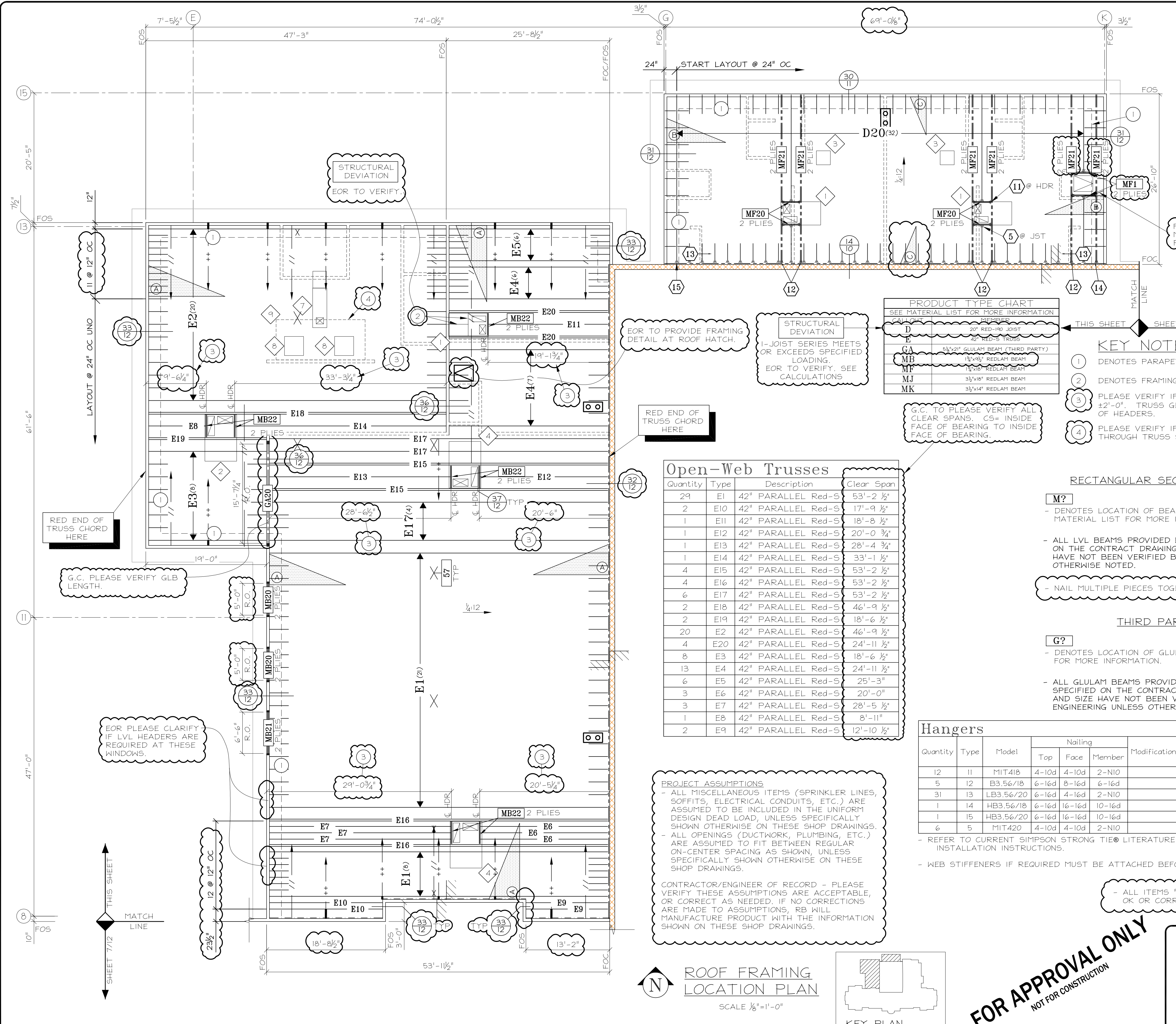
CALLOUT	MEMBER
B	11 7/8" RED-145 JOIST
C	11 7/8" RED-190 JOIST
D	20" RED-190 JOIST
MD	1 3/4" x 11 1/2" REDLAM BEAM
MF	1 3/4" x 18" REDLAM BEAM

2ND FLOOR FRAMING LOCATION PLAN
 SCALE 1/8" = 1'-0"



FOR APPROVAL ONLY
 NOT FOR CONSTRUCTION

BY		DATE	REMARKS	<p>Engineered Wood Products</p>
Providence Hall High School Herriman, UT				
DRAWN	DATE	CHECKED	DATE	ORDER #
-	-	-	-	085264
				SHEET
				5 of 13

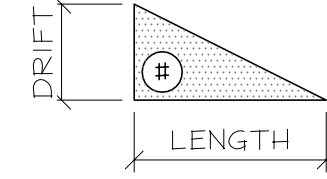


GENERAL NOTES & LEGEND

DESIGN CONSIDERATIONS

BUILDING CODE:	2012 IBC
ROOF DESIGN	
ROOF LIVE LOAD (@ 115%):	33 PSF
DEAD LOAD:	25 PSF
NET WIND UPLIFT (@ 160%):	10 PSF

ADDITIONAL LOADING



- DENOTES SNOW DRIFT PER STRUCTURAL DRAWINGS

SNOW DRIFT INFORMATION		
SNOW DRIFT	DRIFT MAGNITUDE	LENGTH OF DRIFT
A	58 to 0 PSF	12'-0"
B	45 to 0 PSF	9'-3"
C	30 to 0 PSF	6'-0"

- DENOTES LOCATION & INFORMATION OF MECH UNITS IN REF. WITH CONSTRUCTION DOCUMENTS.

MECHANICAL INFORMATION			MECHANICAL INFORMATION		
MECH UNIT	WEIGHT (MAX)	# OF MEMBERS	MECH UNIT	WEIGHT (MAX)	# OF MEMBERS
1	1000#	OVER (2)	7	1060#	OVER (7)
2	1400#	OVER (3)	8	139#	OVER (2)
3	200#	OVER (2)	9	879#	(4) POINTS
4	1500#	OVER (3)			* SUSPENDED LOAD

DRAWING NOTES & LEGEND

- F.O.S. = FACE OF STUD
- FOR TYPICAL NOTES, STANDARD DETAILS, AND ABBREVIATIONS, SEE INSTALLATION COVERSHEET(S).
- XX(##)**
 - DENOTES PRODUCT CALLOUT AND QUANTITY ON PLAN.
 - "XX" - STRUCTURAL MEMBER TYPE CALLOUT
 - "##" - QUANTITY OF STRUCTURAL MEMBERS IN BAY

I-JOIST NOTES & LEGEND

- ALL I-JOISTS WILL BE SENT LONG TO BE FIELD TRIMMED UNLESS MARKED "PET" ON MATERIAL LIST.

OPEN-WEB NOTES & LEGEND

- NO MORE THAN 14 TRUSSES PER BAY ARE TO BE INSTALLED BEFORE TOP CHORD SHEATHING IS REQUIRED.
- #-#**
 - DENOTES INTERMITTENT ROW(S) OF METAL CROSS BRACING BY RB. FOR ADDITIONAL INFORMATION, SEE DETAIL 34/13 AND MATERIAL LIST.
 - "#, #" - METAL BRACE LENGTH FROM TIP TO TIP

- 2x4 STARTER STRUT BY OTHERS, REQUIRED DURING TRUSS INSTALLATION. SEE INSTALLATION COVERSHEET.

- CONTINUOUS ROW OF METAL STRUT BRACING BY RB, REQUIRED FOR LATERAL SUPPORT DURING TRUSS INSTALLATION. SEE INSTALLATION COVERSHEET.

- CONTINUOUS ROW OF MIN. 2x4 FLAT BOTTOM CHORD NAILER BY OTHERS. SEE DETAIL 34/13 FOR MORE INFORMATION.

KEY NOTES

- 1 DENOTES PARAPET BRACE LOAD. 180 PLF LL @ 160%
- 2 DENOTES FRAMING BY OTHERS.
- 3 PLEASE VERIFY IF HEADER LOCATIONS CAN BE SHIFTED ±2'-0" TRUSS GEOMETRY MAY LIMIT EXACT LOCATIONS OF HEADERS.
- 4 PLEASE VERIFY IF DUCT OPENINGS FOR HOOD WILL FIT THROUGH TRUSS SPACING AS SHOWN.

RECTANGULAR SECTION NOTES & LEGEND

- M?**
 - DENOTES LOCATION OF BEAM OR COLUMN BY RB. SEE MATERIAL LIST FOR MORE INFORMATION.
- ALL LVL BEAMS PROVIDED BY REDBUILT ARE AS SPECIFIED ON THE CONTRACT DRAWINGS. SPECIFICATIONS AND SIZE HAVE NOT BEEN VERIFIED BY REDBUILT ENGINEERING UNLESS OTHERWISE NOTED.
- NAIL MULTIPLE PIECES TOGETHER PER CONTRACT DRAWINGS

THIRD PARTY PRODUCTS

- G?**
 - DENOTES LOCATION OF GLULAM BEAM. SEE MATERIAL LIST FOR MORE INFORMATION.
- ALL GLULAM BEAMS PROVIDED BY REDBUILT ARE AS SPECIFIED ON THE CONTRACT DRAWINGS. SPECIFICATIONS AND SIZE HAVE NOT BEEN VERIFIED BY REDBUILT ENGINEERING UNLESS OTHERWISE NOTED.

PRODUCT TYPE CHART
SEE MATERIAL LIST FOR MORE INFORMATION

DESCRIPTION	TYPE
20' RED-190 JOIST	D
20' RED-5 TRUSS	E
5 1/2" x 21" GLULAM BEAM (THIRD PARTY)	GA
13 1/8" REDLAM BEAM	MB
1 1/2" REDLAM BEAM	MF
3 1/2" x 8" REDLAM BEAM	MJ
3 1/2" x 4" REDLAM BEAM	MK

Open-Web Trusses

Quantity	Type	Description	Clear Span
29	E1	42" PARALLEL Red-S	53'-2 1/2'
2	E10	42" PARALLEL Red-S	17'-9 1/2'
1	E11	42" PARALLEL Red-S	18'-8 1/2'
1	E12	42" PARALLEL Red-S	20'-0 3/4"
1	E13	42" PARALLEL Red-S	28'-4 3/4"
1	E14	42" PARALLEL Red-S	33'-1 1/2'
4	E15	42" PARALLEL Red-S	53'-2 1/2'
4	E16	42" PARALLEL Red-S	53'-2 1/2'
6	E17	42" PARALLEL Red-S	53'-2 1/2'
2	E18	42" PARALLEL Red-S	46'-9 1/2'
2	E19	42" PARALLEL Red-S	18'-6 1/2'
20	E2	42" PARALLEL Red-S	46'-9 1/2'
4	E20	42" PARALLEL Red-S	24'-11 1/2'
8	E3	42" PARALLEL Red-S	18'-6 1/2'
13	E4	42" PARALLEL Red-S	24'-11 1/2'
6	E5	42" PARALLEL Red-S	25'-3"
3	E6	42" PARALLEL Red-S	20'-0"
3	E7	42" PARALLEL Red-S	28'-5 1/2'
1	E8	42" PARALLEL Red-S	8'-11"
2	E9	42" PARALLEL Red-S	12'-10 1/2'

Hangers

Quantity	Type	Model	Nailing			Modifications	Finish	Web Stiffeners Required	Note
			Top	Face	Member				
12	11	MIT418	4-10d	4-10d	2-N10		-		-
5	12	B3.56/18	6-16d	8-16d	6-16d		-		-
31	13	LB3.56/20	6-16d	4-16d	2-N10		-		-
1	14	HB3.56/18	6-16d	16-16d	10-16d		-	✓	-
1	15	HB3.56/20	6-16d	16-16d	10-16d		-	✓	-
6	5	MIT420	4-10d	4-10d	2-N10		-	✓	-

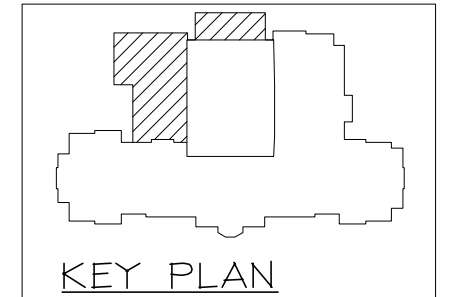
- REFER TO CURRENT SIMPSON STRONG TIE® LITERATURE FOR HANGER SPECIFIC INSTALLATION INSTRUCTIONS.
- WEB STIFFENERS IF REQUIRED MUST BE ATTACHED BEFORE PLACING JOIST IN HANGER.

- ALL ITEMS "CLOUDED" MUST BE MARKED AS OK OR CORRECT INFORMATION PROVIDED.

PROJECT ASSUMPTIONS
 - ALL MISCELLANEOUS ITEMS (SPRINKLER LINES, SOFFITS, ELECTRICAL CONDUITS, ETC.) ARE ASSUMED TO BE INCLUDED IN THE UNIFORM DESIGN DEAD LOAD, UNLESS SPECIFICALLY SHOWN OTHERWISE ON THESE SHOP DRAWINGS.
 - ALL OPENINGS (DUCTWORK, PLUMBING, ETC.) ARE ASSUMED TO FIT BETWEEN REGULAR ON-CENTER SPACING AS SHOWN, UNLESS SPECIFICALLY SHOWN OTHERWISE ON THESE SHOP DRAWINGS.
 CONTRACTOR/ENGINEER OF RECORD - PLEASE VERIFY THESE ASSUMPTIONS ARE ACCEPTABLE, OR CORRECT AS NEEDED. IF NO CORRECTIONS ARE MADE TO ASSUMPTIONS, RB WILL MANUFACTURE PRODUCT WITH THE INFORMATION SHOWN ON THESE SHOP DRAWINGS.

FOR APPROVAL ONLY
NOT FOR CONSTRUCTION

ROOF FRAMING LOCATION PLAN
SCALE 1/8" = 1'-0"



BY		DATE		REMARKS	
RedBUILT Engineered Wood Products					
Providence Hall High School Herriman, UT					
DRAWN	DATE	CHECKED	DATE	ORDER #	SHEET
-	-	-	-	085264	6 of 13

RedI45™, RedI65™, RedI90™, RedI90H™, RedI90HS™, Red-L™, Red-W™, Red-S™, Red-M™, Red-H™, RedLam™ are trademarks of RedBUILT.

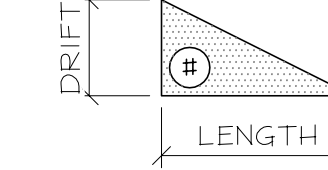
GENERAL NOTES & LEGEND

DESIGN CONSIDERATIONS

BUILDING CODE: 2012 IBC

ROOF DESIGN
 ROOF LIVE LOAD (@ 115%): 33 PSF
 DEAD LOAD: 25 PSF
 NET WIND UPLIFT (@ 160%): 10 PSF

ADDITIONAL LOADING



- DENOTES SNOW DRIFT PER STRUCTURAL DRAWINGS

SNOW DRIFT INFORMATION		
SNOW	DRIFT	LENGTH OF
TYPE	HEIGHT	DRIFT
G	55 to 0 PSF	11'-2"
H	9% to 0 PSF	19'-7"

- DENOTES LOCATION & INFORMATION OF MECH UNITS IN REF. WITH CONSTRUCTION DOCUMENTS.

MECHANICAL INFORMATION			MECHANICAL INFORMATION		
MECH UNIT	WEIGHT (MAX)	# OF MEMBERS	MECH UNIT	WEIGHT (MAX)	# OF MEMBERS
1	1000#	OVER (2)	3	200#	OVER (2)
2	1400#	OVER (5)	11	1400#	OVER (3)

DRAWING NOTES & LEGEND

- F.O.S. = FACE OF STUD
 - FOR TYPICAL NOTES, STANDARD DETAILS, AND ABBREVIATIONS, SEE INSTALLATION COVERSHEET(S).

XX(##)
 - DENOTES PRODUCT CALLOUT AND QUANTITY ON PLAN.
 "XX" - STRUCTURAL MEMBER TYPE CALLOUT
 "##" - QUANTITY OF STRUCTURAL MEMBERS IN BAY

I-JOIST NOTES & LEGEND

- ALL I-JOISTS WILL BE SENT LONG TO BE FIELD TRIMMED UNLESS MARKED "PET" ON MATERIAL LIST.

 - DENOTES CONTINUOUS HANGER TYPE. SEE HANGER INFO.

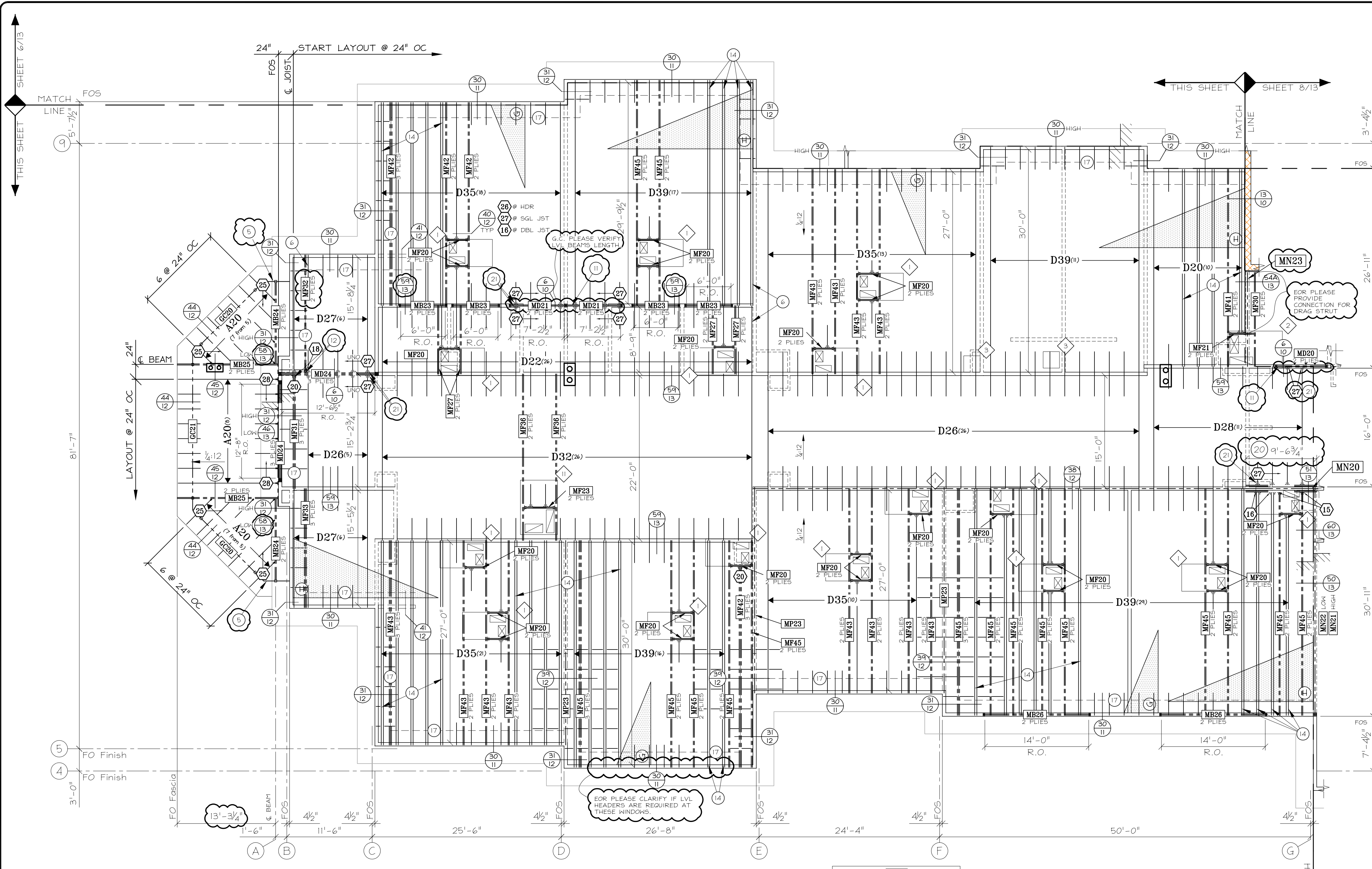
RECTANGULAR SECTION NOTES & LEGEND

M?
 - DENOTES LOCATION OF BEAM BY RB. SEE MATERIAL LIST FOR MORE INFORMATION.
 - ALL LVL BEAMS PROVIDED BY REDBUILT ARE AS SPECIFIED ON THE CONTRACT DRAWINGS. SPECIFICATIONS AND SIZE HAVE NOT BEEN VERIFIED BY REDBUILT ENGINEERING UNLESS OTHERWISE NOTED.
 - NAIL MULTIPLE PIECES TOGETHER PER CONTRACT DRAWINGS

THIRD PARTY PRODUCTS

G?
 - DENOTES LOCATION OF GLULAM BEAM. SEE MATERIAL LIST FOR MORE INFORMATION.
 - ALL GLULAM BEAMS PROVIDED BY REDBUILT ARE AS SPECIFIED ON THE CONTRACT DRAWINGS. SPECIFICATIONS AND SIZE HAVE NOT BEEN VERIFIED BY REDBUILT ENGINEERING UNLESS OTHERWISE NOTED.

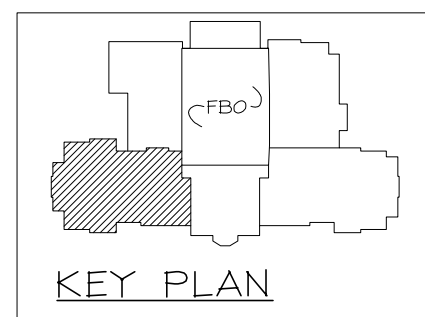
FOR APPROVAL ONLY
NOT FOR CONSTRUCTION



- ALL ITEMS "CLOUDED" MUST BE MARKED AS OK OR CORRECT INFORMATION PROVIDED.
 G.C. TO PLEASE VERIFY ALL BEAMS LENGTHS.

ROOF FRAMING LOCATION PLAN

SCALE 1/8"=1'-0"



PRODUCT TYPE CHART	
CALLOUT	MEMBER
A	9 1/2" RED-145 JOIST
D	20" RED-190 JOIST
GC	5 1/2"x12" GLULAM BEAM (THIRD PARTY)
MB	1 3/4"x9 1/2" REDLAM BEAM
MD	1 3/4"x11 7/8" REDLAM BEAM
MF	1 3/4"x18" REDLAM BEAM
MN	5 1/2"x20" REDLAM BEAM
MP	3 1/2"x20" REDLAM BEAM

STRUCTURAL DEVIATION
 I-JOIST SERIES MEETS OR EXCEEDS SPECIFIED LOADING.
 EOR TO VERIFY. SEE CALCULATIONS

Quantity	Type	Model	Nailing			Modifications	Finish	Web Stiffeners Required	Note
			Top	Face	Member				
2	15	B3.56/18	6-N16	8-N16	6-N16				
7	16	B7.12/20	6-16d	8-16d	4-16d		✓		
1	18	HB3.56/18	6-16d	16-16d	10-16d				
2	20	HB5.50/18	6-16d	16-16d	10-16d				
14	25	LSSUI25	-	9-10d	7-N10		✓		
52	26	M1T418	4-10d	4-10d	2-N10				
55	27	M1T420	4-16d	4-16d	4-N10		✓	1	
8	28	M1U1.81/9	-	16-N10	2-N10				

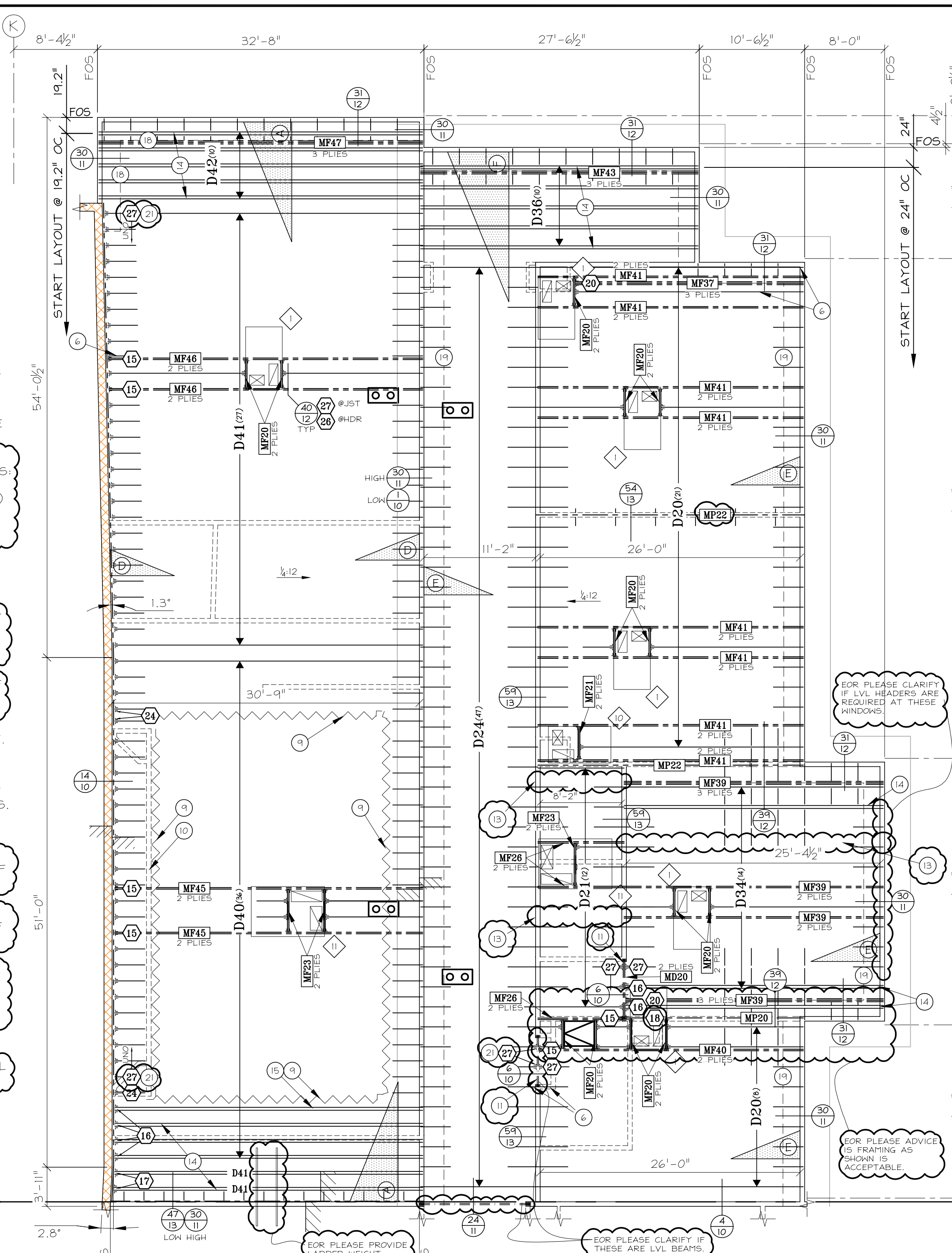
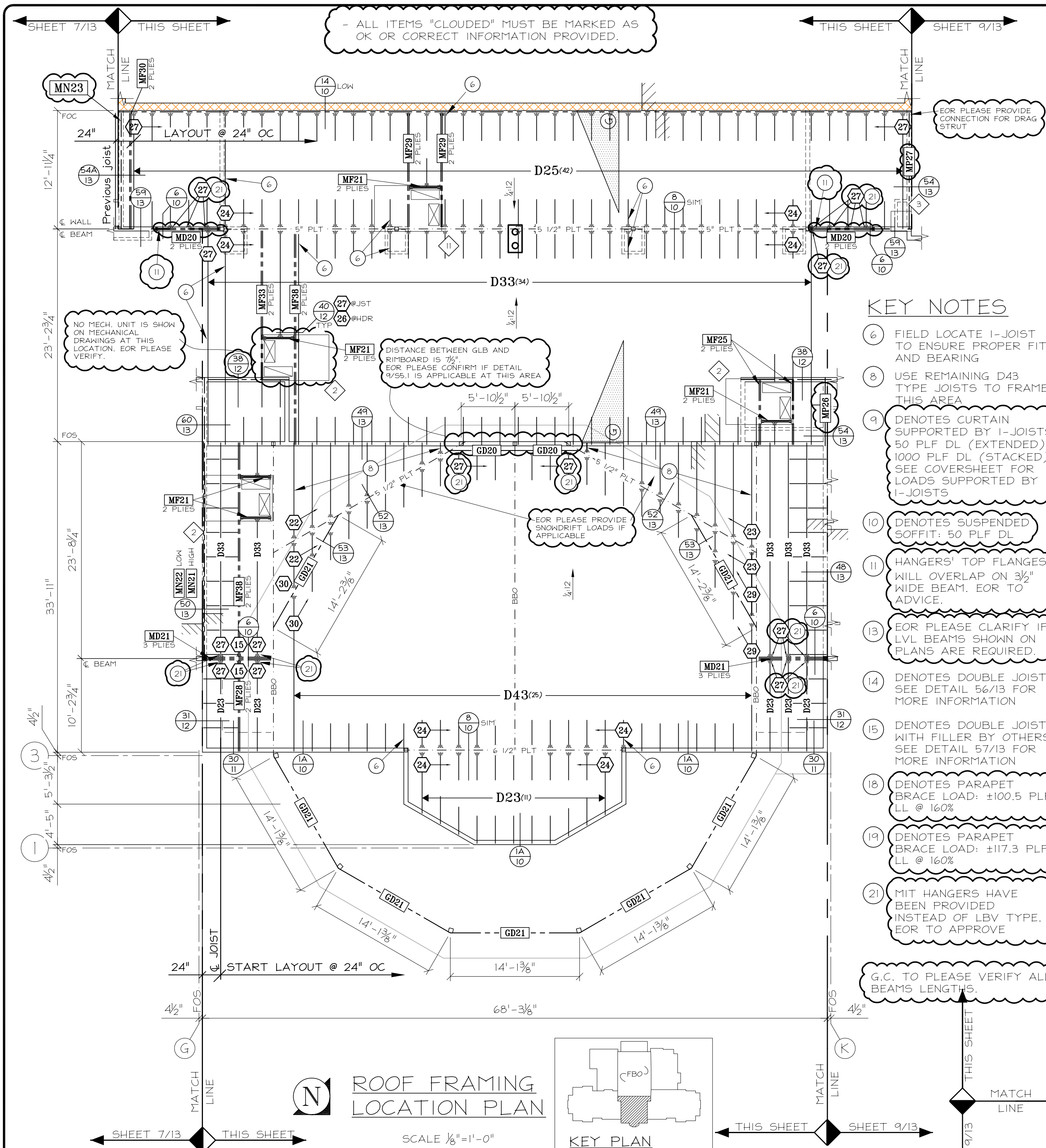
1. USE 1 1/2"x3 1/2" WEB STIFFENERS
 - REFER TO CURRENT SIMPSON STRONG TIE® LITERATURE FOR HANGER SPECIFIC INSTALLATION INSTRUCTIONS.
 - WEB STIFFENERS IF REQUIRED MUST BE ATTACHED BEFORE PLACING JOIST IN HANGER.

KEY NOTES

- 5 USE REMAINING GC20 TYPE GLB PIECE TO FRAME THIS AREA
- 6 FIELD LOCATE I-JOIST TO ENSURE PROPER FIT AND BEARING
- 11 HANGERS' TOP FLANGES WILL OVERLAP ON 3/2" WIDE BEAM. EOR TO ADVISE.
- 12 ASSUMING #308 PLF LL @ 160% BRACE LOAD, UPLIFT END REACTIONS ARE OVER 3200 LBS. EGO TYPE HANGERS OR ADDITIONAL HARDWARE ARE REQUIRED. EOR TO ADVISE.
- 14 DENOTES DOUBLE JOIST. SEE DETAIL 56/13 FOR MORE INFORMATION
- 17 DENOTES PARAPET BRACE LOAD: #308 PLF LL @ 160%
- 20 DETAIL 51/13 APPLIES ALONG THIS PORTION OF WALL. EOR TO VERIFY
- 21 MIT HANGERS HAVE BEEN PROVIDED INSTEAD OF LBV TYPE. EOR TO APPROVE

PROJECT ASSUMPTIONS
 - ALL MISCELLANEOUS ITEMS (SPRINKLER LINES, SOFFITS, ELECTRICAL CONDUITS, ETC.) ARE ASSUMED TO BE INCLUDED IN THE UNIFORM DESIGN DEAD LOAD, UNLESS SPECIFICALLY SHOWN OTHERWISE ON THESE SHOP DRAWINGS.
 - ALL OPENINGS (DUCTWORK, PLUMBING, ETC.) ARE ASSUMED TO FIT BETWEEN REGULAR ON-CENTER SPACING AS SHOWN, UNLESS SPECIFICALLY SHOWN OTHERWISE ON THESE SHOP DRAWINGS.
 CONTRACTOR/ENGINEER OF RECORD - PLEASE VERIFY THESE ASSUMPTIONS ARE ACCEPTABLE, OR CORRECT AS NEEDED. IF NO CORRECTIONS ARE MADE TO ASSUMPTIONS, RB WILL MANUFACTURE PRODUCT WITH THE INFORMATION SHOWN ON THESE SHOP DRAWINGS.

BY DATE REMARKS					
				Providence Hall High School Herriman, UT	
DRAWN	DATE	CHECKED	DATE	ORDER #	SHEET
-	-	-	-	085264	7 of 13



GENERAL NOTES & LEGEND

DESIGN CONSIDERATIONS

BUILDING CODE: 2012 IBC
 ROOF DESIGN
 ROOF LIVE LOAD (@ 115%): 33 PSF
 DEAD LOAD: 25 PSF
 NET WIND UPLIFT (@ 160%): 10 PSF

ADDITIONAL LOADING

DRIFT

LENGTH

- DENOTES SNOW DRIFT PER STRUCTURAL DRAWINGS

SNOW DRIFT INFORMATION			SNOW DRIFT INFORMATION		
SNOW DRIFT	DRIFT MAGNITUDE	LENGTH OF DRIFT	SNOW DRIFT	DRIFT MAGNITUDE	LENGTH OF DRIFT
A	58 to 0 PSF	12'-0"	F	73.5 to 0 PSF	15'-0"
D	31.4 to 0 PSF	6'-5"	G	55 to 0 PSF	11'-2"
E	33.9 to 0 PSF	6'-11"			

MECHANICAL INFORMATION

MECH UNIT	WEIGHT (MAX)	# OF MEMBERS	MECH UNIT	WEIGHT (MAX)	# OF MEMBERS
1	1000#	OVER (5)	11	1400#	OVER (3)
2	1400#	OVER (5)			

DRAWING NOTES & LEGEND

- F.O.S. = FACE OF STUD

- FOR TYPICAL NOTES, STANDARD DETAILS, AND ABBREVIATIONS, SEE INSTALLATION COVERSHEET(S).

XX(##)

- DENOTES PRODUCT CALLOUT AND QUANTITY ON PLAN.
 "XX" - STRUCTURAL MEMBER TYPE CALLOUT
 "##" - QUANTITY OF STRUCTURAL MEMBERS IN BAY

I-JOIST NOTES & LEGEND

- ALL I-JOISTS WILL BE SENT LONG TO BE FIELD TRIMMED UNLESS MARKED "PET" ON MATERIAL LIST.

RECTANGULAR SECTION NOTES & LEGEND

M?

- DENOTES LOCATION OF BEAM BY RB. SEE MATERIAL LIST FOR MORE INFORMATION.

- ALL LVL BEAMS PROVIDED BY REDBUILT ARE AS SPECIFIED ON THE CONTRACT DRAWINGS. SPECIFICATIONS AND SIZE HAVE NOT BEEN VERIFIED BY REDBUILT ENGINEERING UNLESS OTHERWISE NOTED.

- NAIL MULTIPLE PIECES TOGETHER PER CONTRACT DRAWINGS

THIRD PARTY PRODUCTS

G?

- DENOTES LOCATION OF GLULAM BEAM. SEE MATERIAL LIST FOR MORE INFORMATION.

- ALL GLULAM BEAMS PROVIDED BY REDBUILT ARE AS SPECIFIED ON THE CONTRACT DRAWINGS. SPECIFICATIONS AND SIZE HAVE NOT BEEN VERIFIED BY REDBUILT ENGINEERING UNLESS OTHERWISE NOTED.

Hangers

Quantity	Type	Model	Nailing			Modifications	Finish	Web Stiffeners Required	Note
			Top	Face	Member				
10	15	B3.56/18	6-N16	8-N16	6-N16				
6	16	B7.12/20	6-16d	8-16d	4-16d				
2	17	B7.12/20	6-16d	8-16d	6-16d	SKR3			
1	18	HB3.56/18	6-16d	16-16d	10-16d				
2	20	HB5.50/18	6-16d	16-16d	10-16d				
18	22	LBV3.56/20	6-N10	4-N10	6-N10	SKL30			
19	23	LBV3.56/20	6-N10	4-N10	6-N10	SKR30			
86	24	LBV3.56/20	6-N10	4-N10	6-N10				
44	26	MIT418	4-10d	4-10d	2-N10				
157	27	MIT420	4-16d	4-16d	4-N10				1
7	29	WI420	2-N10	-	2-10d	SKR60			
5	30	WI420	2-N10	-	2-10d	SKL60			

1. USE 1/4"x3/8" WEB STIFFENERS

- REFER TO CURRENT SIMPSON STRONG TIE® LITERATURE FOR HANGER SPECIFIC INSTALLATION INSTRUCTIONS.

- WEB STIFFENERS IF REQUIRED MUST BE ATTACHED BEFORE PLACING JOIST IN HANGER.

Red445™, Red465™, Red490™, Red490H™, Red490HS™, Red-L™, Red-W™, Red-S™, Red-M™, Red-H™, RedLam™ are trademarks of RedBUILT.

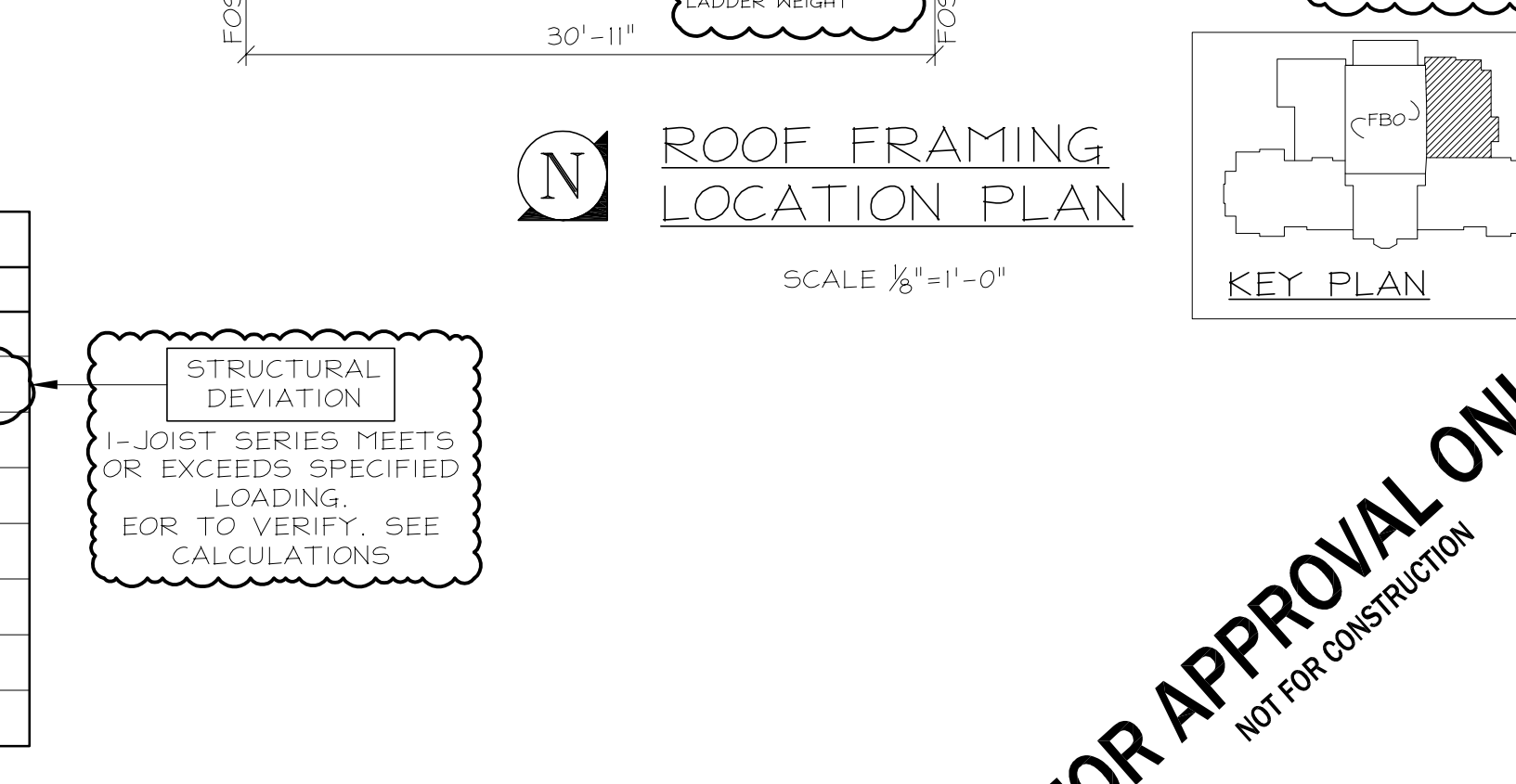
PRODUCT TYPE CHART

SEE MATERIAL LIST FOR MORE INFORMATION

CALL OUT	MEMBER
D	20" RED-190 JOIST
GD	5 1/8"x15" GLULAM BEAM (THIRD PARTY)
MD	1 3/4"x11 3/8" REDLAM BEAM
MF	1 3/4"x18" REDLAM BEAM
MJ	3 1/2"x18" REDLAM BEAM
MN	5 1/2"x20" REDLAM BEAM
MP	3 1/2"x20" REDLAM BEAM

STRUCTURAL DEVIATION

I-JOIST SERIES MEETS OR EXCEEDS SPECIFIED LOADING. EOR TO VERIFY. SEE CALCULATIONS



PROJECT ASSUMPTIONS

- ALL MISCELLANEOUS ITEMS (SPRINKLER LINES, SOFFITS, ELECTRICAL CONDUITS, ETC.) ARE ASSUMED TO BE INCLUDED IN THE UNIFORM DESIGN DEAD LOAD, UNLESS SPECIFICALLY SHOWN OTHERWISE ON THESE SHOP DRAWINGS.

- ALL OPENINGS (DUCTWORK, PLUMBING, ETC.) ARE ASSUMED TO FIT BETWEEN REGULAR ON-CENTER SPACING AS SHOWN, UNLESS SPECIFICALLY SHOWN OTHERWISE ON THESE SHOP DRAWINGS.

CONTRACTOR/ENGINEER OF RECORD - PLEASE VERIFY THESE ASSUMPTIONS ARE ACCEPTABLE, OR CORRECT AS NEEDED. IF NO CORRECTIONS ARE MADE TO ASSUMPTIONS, RB WILL MANUFACTURE PRODUCT WITH THE INFORMATION SHOWN ON THESE SHOP DRAWINGS.

FOR APPROVAL ONLY
NOT FOR CONSTRUCTION

BY	DATE	REMARKS

RedBUILT
Engineered Wood Products

Providence Hall High School
Herriman, UT

DRAWN	DATE	CHECKED	DATE	ORDER #	SHEET
				085264	8 OF 13