

*Las Polillas*  
*son*  
*Murciélagos Blancos*

*Federico Andrés Bellini*  
*Francisco Saunders*



# Índice

<i>Orgánico</i> .....	5
<i>Glosario</i> .....	7
<i>Introducción</i> .....	11
<i>Escena i, 'La Botella'</i> .....	19
<i>Escena ii, 'La Mujer de Piernas Invertidas'</i> .....	31
<i>Escena iii, 'El Bicho &amp; Solo de Ella 3'</i> .....	42
<i>Escena iv, 'Las Siamesas'</i> .....	49
<i>Escena v, 'La Balsa'</i> .....	75
<i>Escena vi, 'Los Recortes'</i> .....	97
<i>Escena vii, 'Enredaderas'</i> .....	125



# ORGÁNICO

(Partitura en Do)

**Flauta**

**Clarinete en Sib**

**Fagot**

**Corno en Fa**

**Trompeta en Sib**

**Trombón**

**Percusionistas:**

**I**

(Platillos de 20", Platillos suspendidos de 10" 16" 18" 22", Shaker)

**II**

(Glockenspiel, Triángulo, Shaker, Jam Blocks)

**III**

(Bouteillophone, Jam Blocks, Cabasa, Maracas)

**IV**

(Pandereta, Cascabeles, Wind Chimes, Triángulo, Ring, Bell, Botellas sopladas, Güiro, Vibraslap, Cabasa, Maracas)

**V**

(Vibráfono)

**Arpa**

**Piano**

**Violín**

**Viola**

**Violoncello**

**Contrabajo**



# GLOSARIO

## General

**normal** = aclaración utilizada para indicar que se debe volver a tocar del modo habitual.

**ord.** = ordinario. Indica que se debe volver a tocar en la posición usual.

→ = transición de una técnica/posición a otra.

 = L.V. (Laissez Vibrer), dejar resonar.


**silencio absoluto** = silenciar completamente el instrumento.

**apagar paulatinamente** = detener la resonancia del instrumento progresivamente.

**vb.**  = vibrato. El gráfico indica la velocidad a la que se debe alterar la nota.

## Maderas

 = frullato (flauta y fagot).


 = transición de sonido de aire (□) a tono (●), la figura intermedia (⊙) indica que hay que realizar un sonido híbrido entre los anteriores (flauta).

 = multifónico de clarinete. La ligadura de expresión indica una transición del sib al multifónico, el gráfico por encima indica la digitación específica.

 = ruido de llaves (flauta).

## Bronces

**sord.** = poner sordina. Cada vez que se requiera retirar la sordina se indicará "**senza sord.**" (corno, trompeta y trombon).

 = los símbolos por encima indican que hay que tapar (+), tapar parcialmente (⊕) o destapar (⊙) la salida de aire de la sordina (corno).

 = "wahwah". El gráfico indica la velocidad aproximada a la que se debe tapar y destapar la boca del instrumento con la sopapa (corno y trompeta).

## Piano

**sobre el cordal** = indica que hay que tocar sobre el arpa del piano.  
La aclaración "**normal**", indica que regresar a tocar sobre las teclas.

 = indica que hay que accionar el pedal de sostenuto. Para revertir dicha acción se indica "**senza P**".


## Cuerdas

**M.V.** = molto vibrato.

**N.V.** = non vibrato.

**sul pont.** = sul ponticello.

 = pizzicato Bartok.

 = rasgado de cuerdas. Si el gráfico indica una flecha descendente, el rasgado debe ser producido con el dedo índice, si es ascendente con el pulgar (contrabajo).

 = pizzicato de armónico natural. La aclaración “**sul III**”, indica que se debe atacar la nota sobre la tercera cuerda (violoncello).

## Percusión

**Pand.**  = pandereta (perc. IV).


**Shk.**  = shaker (perc. I y II).

**Glock.**  = glockenspiel (perc. II).

**Casc.**  = cascabeles (perc. IV).

**Rng.**  = “ring” o timbre de bicicleta (perc. IV).

**Bll.**  = bell, campana de hotel (perc. IV).

**Gúi.**  = güiro (perc. IV).

**Cab.**  = cabasa (perc. III y IV).


**Mrcs.**  = maracas (perc. III y IV).

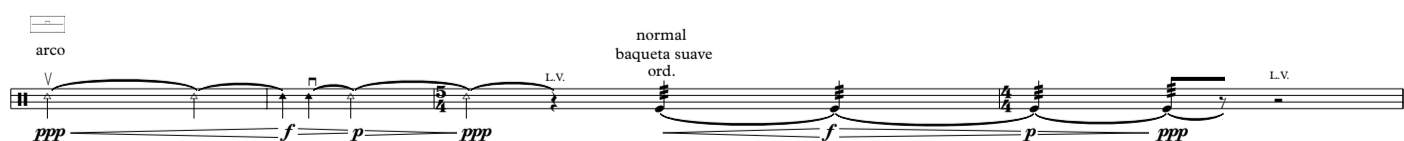
**Vslp.**  = vibraslap (perc. IV).

**Tri.**  = triángulo (perc. II y IV).



**J.B.**  = 2 jam blocks high y medium (perc. II y III).

**Par 20”**  = par de platillos de 20” (perc. I).


**Plat.**  = platillos suspendidos de 10”, 14”, 18” y 22” (perc. I). Se solicitará el uso de “**baquetas suaves**” y “**duras**”, quedando a criterio del percusionista que tipo específico usar dentro de esas dos categorías. Será necesario tener 1 arco de violín o de viola al alcance para cada vez que se indique “**arco**”, el cual debe ser frotado empujando (V) o tirando (□) sobre el canto del platillo. Para regresar al uso de baquetas se indicará “**normal**”; por ejemplo:

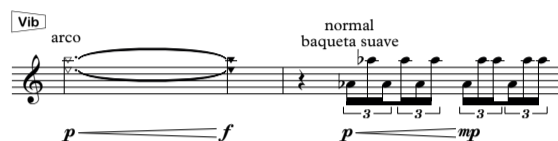





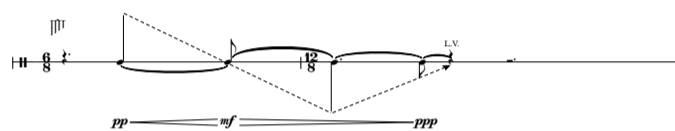
Además, se indicará “  ” cada vez que se requiera tocar sobre el centro del platillo, “  ” para tocar sobre el canto, mientras que “**ord.**” indica que se debe volver a tocar en la zona media (entre el canto y el centro), por ejemplo:



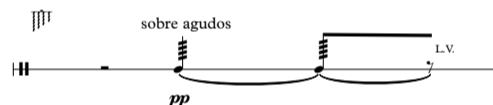
**Vib.**  = vibráfono (perc. V). También se solicitarán “**baquetas suaves**” y “**duras**”, así como el percusionista podrá elegir que tipo específico usar (si al inicio de la pieza no se indica, deberá usar baquetas duras). A su vez, se necesitarán 2 arcos de violoncello (uno para cada mano), para cada vez que se indique “**arco**”. Para regresar al uso de baquetas se indicará “**normal**”; por ejemplo:




**Ch.**  = wind chimes (perc. IV). Las flechas ascendentes indican que hay que ejecutar el instrumento desde la zona grave hacia la zona aguda del instrumento, mientras que las flechas descendentes indican lo contrario, por ejemplo:

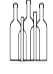


Además, las figuras con trémolo junto a la indicación “**sobre agudos**” por encima de ella, significan que hay que rozar los metales del instrumento rápidamente con el dedo índice o la mano de lado a lado sobre la zona indicada (medios, graves o agudos), por ejemplo:



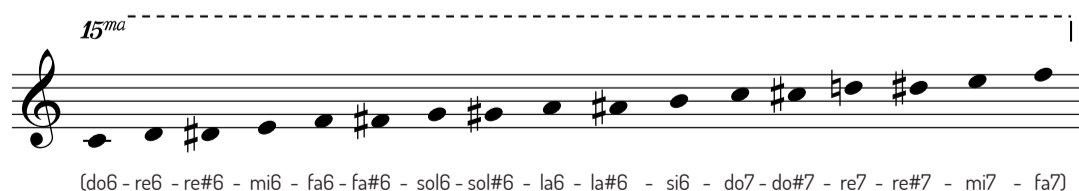
**Bot.**  = (perc. IV) se deben rellenar 2 botellas vidrio con distintos niveles de agua para afinarlas en Si2 (línea inferior) y Fa3 (superior), las cuales deberán ser sopladas al ras del pico hasta producir un sonido tónico (se sugiere el uso de botellas medianas), por ejemplo:



**Bph.**  = bouteillophone (perc. III). Este instrumento consiste en una serie de botellas colgadas en un travesaño, las cuales deben ser percutidas con baquetas duras, preferentemente de madera y maso redondo, por ejemplo:



Estas botellas deben estar rellenas con distintos niveles de agua, a fin de crear diferentes alturas. Para esta obra será necesario contar con 17 botellas afinadas de la siguiente manera:





# Las Polillas son Murciélagos Blancos

## Introducción

♩=60

Flauta *pp* *pp* *f* *mf* *p*

Clarinete en Sb *ppp* *mf* *ppp* *mf* *pp* *p* *pp*

Fagot *ppp* *mf* *pp* *ppp* *p* *mf* *pp* *p* *mf* *f*

Corno en Fa *p* *mf* *pp* *p*

Trompeta en Sb

Trombón *p* *mf* *pp* *p* *mf*

Perc. I *Platillos 10" 14" 18" 22"*

Perc. II *Glockenspiel Glsp*

Perc. III *Maracas*

Perc. IV *Pandereta*

Perc. V *Vibráfono Vib*  
arco *mp* *mf* *p* *f* *p*

Arpa *D<sub>5</sub>*

Piano

Violin *ppp* *pp* *ppp* *pp* *p* *pp*

Viola *pp* *mp* *pp* *ppp* *pp* *f* *pp* *mp* *mf*

Violonchelo *p* *mp* *ppp* *p* *mf*

Contrabajo *p* *mp* *ppp* *p*

13

Fl. *mp* *p* *pp* *p* *pp* *pp*

Cl. Sib *mp* *p* *pp* *mp* *ppp* *mf* *p* *pp* *ff*

Fag. *p* *pp* *p* *mf*

Crn. *f* *p* *pp* *mf* *pp* *mf* *pp*

Tpt. en Sib

Tbn. *p* *f* *pp* *mf* *pp* *mf* *pp*

P. I.

P. II. *Glsp* *a Tri.*

P. III.

P. IV.

P. V. *Vib* *p* *mf* *mp* *f* *p* *p* *pp* *mp* *normal* *mf*

Arpa *f* *mp* *f* *mp* *f* *mf*

Pno. *mp* *mp* *f* *mp*

Vln. *mp* *pp* *mp* *pp* *ppp* *pp* *ppp*

Vla. *pp* *ppp* *pp* *f* *pp*

Vc. *pp* *mf* *pp* *mf* *pp* *mf* *pp* *p* *mf*

Cb. *mf* *pp* *mf* *pp* *mf* *pp* *p* *mf*

A

This page contains the musical score for measures 25 through 32. The instruments and their parts are as follows:

- Fl.** (Flute): Measures 25-32 with dynamics *mf*, *f*, *mp*, *p*, *mf*, *p*, *mp*, *p*.
- Cl. Sib.** (Clarinet in B-flat): Measures 25-32 with dynamics *mp*, *f*, *pp*, *f*, *mp*, *p*, *mp*, *pp*, *mp*, *mf*.
- Fag.** (Bassoon): Measures 25-32 with dynamics *p*, *f*, *p*, *p*, *mp*.
- Crn.** (Cornet): Measures 25-32 with dynamics *p*, *mf*, *mp*, *p*, *pp*, *p*, *f*, *p*.
- Tpt. en Sib.** (Trumpet in B-flat): Measures 25-32, mostly rests.
- Tbn.** (Tuba): Measures 25-32 with dynamics *p*, *mf*, *mp*, *pp*, *p*, *mf*, *p*, *f*.
- P. I.** (Percussion I): Rests.
- P. II.** (Percussion II): Includes *Triangolo* and *Gisp.* (Gong) with dynamics *p*, *pp*, *pp*. Includes *L.V.* (Larghetto) and *a Shk.* (a Shikhar).
- P. III.** (Percussion III): Rests.
- P. IV.** (Percussion IV): Includes *Vib.* (Vibraphone) with dynamics *pp*, *mp*.
- P. V.** (Percussion V): Includes *Vib.* with dynamics *mp*, *p*. Includes *L.V.* and a *5* (quintuplet).
- Arpa** (Harp): Measures 25-32 with dynamics *f*, *mp*. Includes chords *Ab* and *Es G#*.
- Pno.** (Piano): Measures 25-32 with dynamics *mf*, *p*, *mf*. Includes *L.V.* and a *3* (triple).
- Vln.** (Violin): Measures 25-32 with dynamics *ppp*, *pp*, *p*, *pp*, *mp*, *pp*. Includes *M.V.* (Molto Vivace) and *N.V.* (Niente).
- Vla.** (Viola): Measures 25-32 with dynamics *pp*, *f*, *pp*, *p*, *mp*, *mf*, *pp*. Includes *M.V.* and a *3* (triple).
- Vc.** (Violoncello): Measures 25-32 with dynamics *p*, *pp*. Includes a *3* (triple).
- Cb.** (Contrabasso): Measures 25-32 with dynamics *p*, *mf*, *pp*.

35

Fl.

Cl. Sib

Fag.

Crn.

Tpt. en Sib

Tbn.

P. I. *baquetas suaves* a Par 20" *Par de 20"*

P. II. *Shaker*

P. III. *a J.B.*

P. IV.

P. V. *Vib* arco

Arpa

Pno.

Vln.

Vla.

Vc.

Cb.

*pp*

*pp* *p*

*pp < mp*

*pp*

*ppp*

*mf* *p* *mp* *p* *mf < f* *mf < f*

*p* *pp* *p* *< mf*

*pp < mf* *mp* *mf* *p < mf*

*p* *pp < mf* *mp* *mf* *p < mf* *p* *< mf > p*

*ppp* *mf* *ppp* *pp < mp*

*pp* *p* *ppp* *pp* *L.V.* *pp* *L.V.* *L.V.*

*ppp* *p* *ppp* *mp* *a J.B.*

*pp* *p* *ppp* *p* *mp*

*p* *mp* *mf* *p < mf*

*mf* *mp* *mf* *ff* *mf* *p* *A: Bb* *E:* *G: Bb* *a Eb Fb*

*mf* *p* *mp* *p*

*ppp*

*mf* *mp* *p* *pp* *ppp* *pp* *f*

*mf > pp* *mf* *pp* *ppp* *mf* *p* *f* *pizz.* *arco* *p* *< mf*

*mf > pp* *mf* *pp* *ppp* *p < mf* *p* *f* *p* *arco* *p* *< mf*

**B**

42

Fl. *pp* *mp* *p*

Cl. Sib *mf* *p* *ppp* *mf*

Fag. *<ff* *f < ff* *mp < f* *p* *f* *pp*

Crn. *p* *mf* *p* *p* *f* *pp*

Tpt. en Sib *mf* *p* *pp* *f* *p* *ppp*

Tbn. *mf* *p* *mf* *p* *f* *pp*

P. I. *p* L.V. L.V.

P. II. *mf* a Glock.

P. III. *p* *mp* *mf* a Bph.

P. IV. *mf* *f*

P. V. *f* *p* *f* normal *p* *mp* *p*

Arpa *mf* *f* *mf* *mp*

*mf* *E♭ F♯* *E♭ F♯* *G♯* *G♯—G♯*

Pno. *mf* *p*

Vln. *pp* *ppp* *pizz.* *p* *arco* *ppp* *pp* *M.V.*

Vla. *pp* *pizz.* *mf* *arco* *M.V.* *pp* *f* *pp*

Vc. *mp* *pp* *pizz.* *mf* *arco* *p* *f* *pizz.*

Cb. *mp* *pp* *pizz.* *mf* *arco* *p* *f* *pizz.*

47

Fl.

Cl. Sib.

Fag.

Crn.

Tpt. en Sib.

Tbn.

P. I.

P. II. *Glsp*

P. III. *Bouteillophone*

P. IV. *ppp* *mf* a Ch.

P. V. *Vib*

Arpa

Pno.

Vln.

Vla.

Vc.

Cb.

*pp* *p* *mf* *p* *pp* *mp* *pp* *f* *ff*

*p* *p* *mf* *p* *p* *mp* *p*

*p* *mf* *p* *p* *f*

*ppp* *p* *pp* *mp* *pp* *mf*

*mf* *p*

*ppp* *p* *pp* *mp* *pp* *p*

*p* *mf* *pp*

*pp* *mf* *pp*

*G# — G# Ab* *D# Eb F# B# C#* *Ab — A#* *D# Eb F# G# A# C#*



This page contains the musical score for measures 53 through 56. The instruments and their parts are as follows:

- Flute (Fl.):** Starts with a melodic line at *p*.
- Clarinet in B-flat (Cl. Sib.):** Features a melodic line with dynamics *p*, *ppp*, *p*, *pp*, and *mp*. Includes a triplet of eighth notes.
- Bassoon (Fag.):** Features a melodic line with dynamics *p*, *f*, *mp*, and *pp*. Includes a triplet of eighth notes.
- Cor Anglais (Crn.):** Features a melodic line with dynamics *pp*, *mf*, *pp*, *mf*, and *pp*.
- Trumpet in B-flat (Tpt. en Sib.):** Rests.
- Tuba (Tbn.):** Features a melodic line with dynamics *pp*, *mf*, *pp*, *pp*, *mf*, and *pp*.
- Percussion (P. I. - P. IV.):**
  - P. I. and P. II. are silent.
  - P. III. has a chime symbol.
  - P. IV. has a "Wind Chimes" symbol and plays a *pp* note at the end of the page.
- Vibraphone (P. V. Vib):** Features a complex rhythmic and melodic line with dynamics *pp*, *p*, *mp*, and *p*. Includes triplets and sixteenth-note patterns.
- Arpa (Arpa):** Features a complex rhythmic and melodic line with dynamics *mf*, *mp*, and *pp*. Includes triplets and sixteenth-note patterns.
- Piano (Pno.):** Features a melodic line with dynamics *pp* and *mp*. Includes a *mf* note in the bass.
- Violin (Vln.):** Features a melodic line with dynamics *pp* and *p*. Includes a "senza vib." marking.
- Viola (Vla.):** Rests.
- Violoncello (Vc.):** Rests.
- Contrabasso (Cb.):** Rests.

Chordal markings for the piano part include: *A: Ab*, *G: A: B:*, *G: G:*, and *Ab*.

This page of the musical score, numbered 18, contains parts for the following instruments:

- Fl.:** Flute, measures 58-63. Dynamics: *mp* → *p*, *pp*, *pppp*.
- Cl. Sib:** Clarinet in B-flat, measures 58-63. Dynamics: *ppp*, *ppp* → *p*, *pp* → *p*, *ppp*.
- Fag.:** Bassoon, measures 58-63. Dynamics: *ppp*, *mf*, *pp*, *ppp*, *pp*, *ppp*, *pppp*.
- Crn.:** Cor Anglais, measures 58-63. Dynamics: *ppp*, *p*, *pp*, *ppp*.
- Tpt. en Sib:** Trumpet in B-flat, measures 58-63. Dynamics: *pp*.
- Tbn.:** Trombone, measures 58-63. Dynamics: *pp*.
- P. I.:** Percussion I, measures 58-63. Dynamics: *pp*.
- P. II.:** Percussion II, measures 58-63. Dynamics: *pp*. Includes *Gisp* (glissando) and *L.V.* (left vibraphone) markings.
- P. III.:** Percussion III, measures 58-63. Dynamics: *pp*. Includes *L.V.* marking.
- P. IV.:** Percussion IV, measures 58-63. Dynamics: *p*, *pp*, *mp*. Includes *a Pand.* (a pair of pandero) marking.
- P. V.:** Percussion V, measures 58-63. Dynamics: *pp*. Includes *Vib* (vibraphone) marking.
- Arpa:** Harp, measures 58-63. Dynamics: *mf*. Includes *L.V.* marking and chord voicings: *A1*, *Eb Gb Bb*.
- Pno.:** Piano, measures 58-63. Dynamics: *pp*.
- Vln.:** Violin, measures 58-63. Dynamics: *ppp*, *p*, *pp*. Includes *N.V.* (no vibrato) marking.
- Vla.:** Viola, measures 58-63. Dynamics: *p*, *ppp*, *p*, *pp*, *mf*, *p*, *pp*. Includes *N.V.* marking.
- Vc.:** Violoncello, measures 58-63. Dynamics: *ppp*, *p*, *ppp*, *p*, *pp*, *mf*, *p*, *pp*.
- Cb.:** Contrabasso, measures 58-63. Dynamics: *ppp*, *p*, *ppp*, *p*, *pp*, *mf*, *p*, *pp*.

# La Botella

## Escena I

♩=100

flull.

Flauta *mp* *p < mf* *mp* *ppp*

Clarinete en Sib *mp* *< mf* *mp* *p < mp* *mf* *p < mf* *ppp* *ppp* *p* *pp* *ppp*

Fagot *mp* *f* *mp* *f* *mp* *ppp* *mf*

Corno en Fa *pp* *mp* *p* *mp* *p* *ppp* *ppp* *p* *ppp*

Trompeta en Sib *ppp* *mp* *ppp* *sord.*

Trombón *p* *mp* *p* *ppp*

Perc. I *Platillos 10" 14" 18" 22"* *baqueta suave* *L.V.* *mp* *mf* *pp*

Perc. II *Glockenspiel* *Gls* *mp* *f* *p* *pp*

Perc. III *Bouteilophone*

Perc. IV *Triángulo* *L.V.* *p*

Perc. IV *Ring/Bell* *L.V.* *mp*

Perc. IV *Wind Chimes* *L.V.* *mp*

Perc. V *Vibráfono* *Vib* *mp* *pp*

Arpa *mp* *B<sub>b</sub>* *pp* *mp*

Piano *mp* *pp* *p*

Violín *♩=100* *pizz.* *p* *arco* *ppp* *mf* *ppp* *pizz.* *p*

Viola *pizz.* *p* *arco* *f* *pp* *mf* *ppp* *pp* *mf* *pp* *pizz.* *mf* *arco* *pp* *mf* *ppp*

Violonchelo *pizz.* *p* *mp* *arco* *p* *mf* *ppp* *p* *ppp*

Contrabajo *pizz.* *mp* *arco* *pp* *pizz.* *mp*

A

Fl.

Cl. Sib.

Fag.

Crn.

Tpt. en Sib.

Tbn.

P. I. *baqueta dura*

P. II. *Glsp*

P. III.

P. IV.

P. V. *Vib*

Arpa

Pno.

A

Vln.

Vla.

Vcl.

Cb.

21

Frull. *f* *mf* *f* *mp* *pp* *mp* *mf*

Cl. Sib *mp* *f* *mp* *mf* *mp* *mf* *p* *mf* *mp* *f* *mp*

Fag. *mp* *f* *mf* *mp* *mf* *f* *mp*

Crn. *mf* *pp* *pp* *mf* *mp* *f* *pp* *p* *mf* *mp*

Tpt. en Sib *p* *mf* *p* *mp* *pp* *mf* *ppp* *mp*

Tbn. *f* *mf* *p* *f* *mp* *f* *pp* *f* *pp* *mp*

P. I. *mp* *mf* *p* *mf*

P. II. *Glsp*

P. III.

P. IV. *mf* *f* *pp* *f* *mp* *pp* *a Rng./Bll.* *p* *L.V.* *a Ch. a Tri.* *mp*

P. V. *Vib*

Arpa *B<sup>b</sup>* *B<sup>b</sup>* *B<sup>b</sup>* *E<sup>b</sup>*

Pno.

Vln. *arco* *pp* *mf* *pp* *p* *mf* *ppp* *mp*

Vla. *arco* *f* *mp* *f* *mp* *mf* *p* *mf* *f* *mp* *mf*

Vc. *arco* *mp* *f* *mf* *mp* *p* *mp*

Cb. *f*



**B**

♩=150

33

Fl. *f* *ff* *f* *mp* *f*

Cl. Sib *f* *ff* *p* *mf* *p*

Fag. *f* *ff* *f*

Crn. *mp* *f* *ff* *mp* *mf* *mp* *mf* *mp* *mf*

Tpt. en Sib *f* *ff* *p* *mf* *pp*

Tbn. *f* *mf* *ff* *mp* *mf* *mp* *mf* *mp* *mf*

P. I. *ff* *baqueta suave ord.*

P. II. *f* *f*

P. III. *mp*

P. IV. *f* *mf* *mf* *mf*

P. V. *mf*

Arpa *L.V.* *L.V.* *E♭ B♭*

Pno. *8va*

**B**

♩=150

Vln. *f* *mf* *ff* *p* *f* *pp* *f* *p* *f*

Vla. *mp* *f* *ff* *p* *f* *pp*

Vc. *f* *ff* *p* *f* *pp* *mf* *f*

Cb. *mf*

38 frull. *mp* *f* *p* *f* *mf*

Cl. Sib *mf* *p* *mf* *pp* *mp* *pp* *ppp*

Fag. *mp* *p* *mp* *ff* *mf* *ff*

Crn. *mp* *mf* *mp* *mf* *mp* *mf* *pp* *ppp*

Tpt. en Sib *mp* *p* *mf* *p* *mf* *pp* *ppp*

Tbn. *mp* *mf* *mp* *mf* *mp* *mf* *pp* *ppp*

P. I. baqueta dura *mp* L.V. baqueta suave ord. *mp* *p*

P. II. *mp* *p* *mf* *p* *mf* *pp* *ppp*

P. III. *mp* *p* *mf* *p* *mf* *pp* *ppp*

P. IV. *mf* a Tri.

P. V. *p*

Arpa L.V. L.V. a Eb

Pno. *p* *f* *pp* *f* *p* *mf* *p* *pp* *mp*

Vln. *pp* *mf* *mp* *f* *pp* *f* *p* *mf* *p* *pp* *mp*

Vla. *f* *p* *f* *pp* *p* *f* *pp* *f* *mf* *pp* *ppp*

Vc. *p* *f* *pp* *f* *p* *f* *mf* *pp* *ppp*

Cb. *p* *f* *pp* *f* *p* *f* *mf* *pp* *ppp*

C



45 *frull.*

Fl. *p* *f* *mf* *f* *p* *f* *p* *f* *p* *f*

Cl. Sib *f* *p* *f* *p* *f* *p* *f* *p* *f*

Fag. *mf*

Crn.

Tpt. en Sib

Tbn.

P. I. *ppp* *mf* *ppp*

P. II. *Glsp* *2* *3* *3*

P. III. *mf* *3* *3* *3*

P. IV. *mf* *L.V.* *a Bot.* *p* *mf* *pp* *p* *f* *pp* *a Ch.* *a Rng./Bll.*

P. V. *Vib*

Arpa *L.V.* *L.V.* *E<sup>b</sup>* *E<sup>b</sup>* *f* *C<sup>#</sup> G<sup>#</sup>* *G<sup>#</sup> a B<sup>b</sup> E<sup>b</sup>*

Pno. *3* *3* *3* *3* *3* *3* *3* *3* *3* *3* *3*

Vln. *pp* *mf* *p* *f*

Vla. *pp* *mf* *p* *f*

Vc. *pp* *mf* *p* *f*

Cb.



This musical score page, labeled 'D' and numbered '27', contains the following parts and markings:

- Fl.:** Measures 60-67. Dynamics: *mp*.
- Cl. Sib:** Measures 60-67. Dynamics: *p < f*, *p < f*, *p < f*, *p < f*, *p < f*, *p < f*.
- Fag.:** Measures 60-67. Dynamics: *p*.
- Cor. en Sib:** Measures 60-67. Dynamics: *mp*, *mf*, *mp*, *f*, *mp*, *mf*, *mp*, *mf*, *mp*, *mf*, *pp*, *p*.
- Tpt. en Sib:** Measures 60-67. Dynamics: *p < f*, *mf*, *p < f*, *p < f*, *p < f*, *p < f*, *mp*, *f*.
- Tbn.:** Measures 60-67. Dynamics: *pp*.
- P. I.:** Measures 60-67. Dynamics: *pp*, *f*, *pp*, *mf*. Includes *L.V.* and *arco* markings.
- P. II.:** Measures 60-67. Includes *Gisp* marking.
- P. III.:** Measures 60-67.
- P. IV.:** Measures 60-67. Includes *L.V.* and *a Bot.* markings.
- P. V.:** Measures 60-67. Includes *Vib* marking.
- Arpa:** Measures 60-67. Includes *E<sup>b</sup>* and *E<sup>b</sup>* markings.
- Pno.:** Measures 60-67. Dynamics: *mf*.
- Vln.:** Measures 60-67. Dynamics: *mf*, *pp < f > pp*, *mf*, *pp < f*, *mf*, *pp < f*, *mf*, *pp < f*, *ppp*.
- Vla.:** Measures 60-67. Dynamics: *mp*, *mf*, *p*, *mf*, *f*, *mf*, *mp*, *pp*, *ppp*, *mf*.
- Vc.:** Measures 60-67. Dynamics: *mp*, *mf*, *p*, *mf*, *f*, *mf*, *mp*, *pp*, *ppp*, *mf*.
- Cb.:** Measures 60-67.

69

Fl.

Cl. Sib

Fag.

Crn.

Tpt. en Sib

Tbn.

P. I.

P. II

P. III

P. IV

P. V.

Arpa

Pno.

Vln.

Vla.

Vc.

Cb.

*mf* *mp* *f* *mf* *pp* *f*

*mf* *ff* *mf* *ff* *f* *ff* *p* *ff*

*p* *ff* *p* *ppp* *mp* *mf* *p* *f*

*mf* *ff* *mf* *gliss.* *ff* *f* *ff* *p* *ff*

L.V. *f* *mp* *f* *mf* *ff* *ff*

*Glsp*

*ff* *pp*

*p* *ff* *mutar paulatinamente*

*Vib* *f* *mf*

L.V. *f* *ff*

*B♯ B* *G♯* *C♯ G♯* *G♯* *a C♯*

*f* *ff*

*mf* *pp* *f* *ppp* *mf* *pp* *f* *ppp* *mf*

*pp* *f* *ppp* *mf* *pp* *f* *ppp* *mf*

rall. ♩=115

75

Fl. *frull.*  $p$   $f$   $p$   $ppp$

Cl. Sib  $pp$   $mp$   $p$   $pp$   $mp$   $p$   $mf$   $p$   $ppp$

Fag.  $pp$   $mp$   $f$   $p$   $mp$

Crn.  $ppp$   $p$   $ppp$   $pp$   $mf$   $ppp$   $pp$   $mf$   $p$   $ppp$

Tpt. en Sib *sord.*  $pp$   $ppp$   $p$   $ppp$

Tbn.  $pp$   $p$   $pp$   $mf$   $ppp$

P. I. *normal baqueta suave ord.*  $p$   $mp$  *L.V.* *L.V.*

P. II.  $p$   $pp$   $mp$   $pp$  *L.V.*

P. III.  $p$   $mf$   $p$   $2$   $3$  *L.V.*

P. IV.  $pp$   $mp$   $mf$   $f$   $p$   $pp$

P. V. *Vib*  $pp$   $p$   $pp$  *L.V.* *Red.*

Arpa  $p$   $pp$   $p$   $mp$   $mf$  *L.V.*

Pno.  $mp$   $pp$   $p$   $mp$   $mf$  *L.V.*

E

rall. ♩=115

Vln. *pizz.*  $f$   $mp$   $f$  *L.V.*

Vla. *pizz.*  $f$  *arco*  $pp$   $mf$   $pp$   $ppp$   $pp$   $mf$   $p$   $ppp$

Vc. *arco*  $f$   $ppp$   $p$   $ppp$   $pp$   $mf$   $pp$   $ppp$

Cb.  $f$   $mf$  *L.V.*



# La Mujer de Piernas Invertidas

## Escena II

♩=120

**Flauta** (flull.)  
*p* *ff* *f* *pp* *f* *p* *pp* *mf* *pp*

**Clarinete en Sib**  
*p* *ff* *f* *pp* *f* *p* *pp* *mf* *pp*

**Fagot** (frull.)  
*p* *ff* *f* *pp* *f* *p* *pp* *f* *mf* *pp*

**Corno en Fa**  
*pp* *ff* *f* *pp* *mf* *pp* *f* *mf* *pp* *mp* *ff* *pp*

**Trompeta en Sib**  
*pp* *ff* *f* *pp* *p* *pp* *ppp* *pp* *mf* *pp* *ppp*

**Trombón**  
*pp* *ff* *f* *pp* *mf* *pp* *ff* *mf* *p* *mp* *ff* *pp* *mp*

**Perc. I** (Par de 20", a Plat., Plátillos 10" 14" 18" 22", L.V.)  
*pp* *f* *ff* *mp* *f* *p*

**Perc. II** (Glockenspiel, Glsp, a Tri.)  
*mp* *p*

**Perc. III** (Jam Blocks)  
*mf*

**Perc. IV** (Cascabeles, a Cab., Pandereta, a Güi.)  
*p* *f* *mf*

**Perc. V** (Vibráfono, Vib.)  
*p* *f* *mf* *f*

**Arpa**  
*f* *mp* *mf* *f* *mp*

**Piano**  
*f* *mf* *pp* *ff* *mf* *f* *pp*

**Violín**  
*ppp* *ff* *mp* *mf* *f* *p* *f* *p* *ppp*

**Viola**  
*ppp* *ff* *mp* *mf* *f* *mp* *f* *p* *ppp*

**Violonchelo**  
*ppp* *ff* *mp* *f* *sfz* *mf* *mp* *pizz.* *mf*

**Contrabajo** (pizz.)  
*mf*

This page of a musical score includes the following parts and markings:

- Flute (Fl.):** Measures 10-17, dynamics *mp*, *mf*, *f*, *mp*, *mf*.
- Clarinet in B-flat (Cl. Sib.):** Measures 10-17, dynamics *mp*, *mf*, *f*, *mp*, *mf*.
- Bassoon (Fag.):** Measures 10-17, dynamics *mf*, *f*, *mf*, *f*, *mf*.
- Corn (Crn.):** Measures 10-17, dynamics *mp*, *f*, *mp*, *f*, *pp*, *f*, *p*, *mf*, *pp*, *p*, *p*, *mf*, *p*, *mf*, *p*.
- Trumpet in B-flat (Tpt. en Sib.):** Measures 10-17, dynamics *mf*, *ppp*, *mf*, *p*, *mf*, *p*, *mf*, *p*.
- Tuba (Tbn.):** Measures 10-17, dynamics *mp*, *f*, *pp*, *mp*, *f*, *p*, *mf*, *p*, *mf*, *p*.
- Percussion I (P. I.):** Empty staff.
- Percussion II (P. II.):** Triángulo (triangle), dynamics *mp*, *p*.
- Percussion III (P. III.):** Glsp (gong), dynamics *mp*, *mf*.
- Percussion IV (P. IV.):** Cabasa (cubassa), Güiro (güiro), Vib (vibraphone), dynamics *mf*, *f*, *pp*, *mf*, *mf*, *p*, *mp*. Includes markings: *a Ch.*, *Wind Chimes*, *a Mrcs.*, *a Pand.*, *L.V.*, *L.V.*.
- Percussion V (P. V.):** Dynamics *mf*, *mp*, *mf*, *p*, *mf*.
- Arpa (Arpa):** Dynamics *mf*, *mf*, *mp*, *mf*. Includes markings: *L.V.*, *A<sup>b</sup>*, *A<sup>b</sup>*, *E<sup>b</sup>*, *A<sup>b</sup>*, *A<sup>b</sup>*, *a E<sup>b</sup>*.
- Piano (Pno.):** Dynamics *mp*, *mf*.
- Violin (Vln.):** Dynamics *pp*, *p*, *mp*. Includes markings: *pizz.*, *arco*.
- Viola (Vla.):** Dynamics *pp*, *p*, *mp*, *f*. Includes markings: *pizz.*, *arco*.
- Violoncello (Vc.):** Dynamics *p*, *mf*. Includes marking: *arco*.
- Contrabasso (Cb.):** Dynamics *f*.







This page of a musical score, numbered 35, contains the following parts and markings:

- Fl.:** Flute part with triplet markings and dynamic markings *mf* and *f*.
- Cl. Sib:** Clarinet in B-flat part with slurs, accents, and dynamic markings *mp* and *f*.
- Fag.:** Bassoon part with slurs and dynamic markings *mf* and *f*.
- Crn.:** Horn part with slurs and dynamic markings *f*, *ppp*, *f*, *mf*, and *pp*.
- Tpt. en Sib:** Trumpet in B-flat part with slurs and dynamic markings *p*, *f*, *mf*, and *f*.
- Tbn.:** Trombone part with slurs and dynamic markings *p* and *f*.
- P. I.:** Percussion I (Cymbal) with markings "a Plat.", "ord.", and "L.V.", and dynamic markings *mf* and *f*.
- P. II.:** Percussion II (Gong) with triplet markings and dynamic marking *mf*.
- P. III.:** Percussion III (Tom-toms) with triplet markings and dynamic marking *mp*.
- P. IV.:** Percussion IV (Snare) with markings "a Ch." and dynamic markings *f* and *pp*.
- P. V.:** Percussion V (Vibraphone) with dynamic markings *p* and *f*, and triplet markings.
- Arpa:** Arpa part with dynamic markings *mf* and *mf*, and chord changes: *Ab Eb*, *A Eb*, *D*, *Db*, *Ab Eb*, *A Eb*, and *a Ab Eb*.
- Pno.:** Piano part with slurs, accents, and dynamic markings *mf* and *f*.
- Vln.:** Violin part with triplet markings.
- Vla.:** Viola part with slurs and dynamic markings *mp* and *f*.
- Vc.:** Violoncello part with dynamic markings *mp* and *mf*.
- Cb.:** Contrabass part.



B

♩=160

54

Fl. *mf sfz frull. mf sfz mf sfz f mf sfz f mp ff*

Cl. Sib *ff mp ff*

Fag. *mp ff*

Crn. *ff mp f*

Tpt. en Sib *ff mf ff mp ff*

Tbn. *ff f*

P. I. *f* a Par 20° L.V.

P. II. *ff f* a Tri.

P. III.

P. IV. *ff p*

P. V. *mp ff*

Arpa *Ab Eb A4 Eb Ab Eb A4 Eb a Ab Bb Eb G4*

Pno. *f p ff*

Vln. *f f fff mp ff*

Vla. *ff f ff f mp ff*

Vc. *ff mp ff*

Cb. *ff f*

B

♩=160

61

Fl. *mp* *f* *p* *ff* *pp* *f* *mf*

Cl. Sib. *mp* *f* *ff* *pp* *f* *mf*

Fag. *mf*

Cm. *mp*

Tpt. en Sib. *f* *pp* *f* *mp < f* *mp < f* *mp < f* *mp < f* *mp < f* *mp < f* *mp < f* *mp < f* *mp < f*

Tbn. *mf*

P. I. *f* *mf*

P. II. *mp*

P. III. *mf*

P. IV. *f*

P. V. *mf* *f* *mf*

Arpa *f* *mf*

Pno. *ff*

Vln. *f* *pp* *ff* *p* *pp* *mf*

Vla. *f* *ff* *p* *pp* *mf*

Vc. *f* *ff* *p* *pp* *mf*

Cb. *mf*

frull.

a Plat.

baqueta dura

L.V.

Gisp

Vib

B<sub>2</sub> G<sub>2</sub> A<sub>2</sub> A<sub>2</sub> A<sub>2</sub> A<sub>2</sub> a E<sub>2</sub>

G<sub>2</sub> G<sub>2</sub> G<sub>2</sub> E<sub>2</sub>

C

68

Fl. *mf* *f* *mf* *mp*

Cl. Sib *f* *mf* *f* *f*

Fag. *mp* *f* *ff*

Crn. *f* *mp* *f* *mp* *f* *p* *ff* *mp* *ff* *mp* *pp* *f*

Tpt. en Sib *f* *mp* *f* *ff* *mp* *f* *mp* *ff* *mp* *f* *ppp* *p*

Tbn. *mp* *ff* *p* *ff*

P. I. ord. *f* *mf* *ff* L.V.

P. II. *mf* *mp* *f* a Tri.

P. III. a Bph.

P. IV. *ff* *mp* *f* *mp* *ppp*

P. V. *p* *mf* *f* Vib

Arpa *f* *ff* L.V.

Pno. *Reo* *8<sup>va</sup>*

Vln. *mf* *f* *mp* *f* *pizz.*

Vla. *f* *mp* *ff* *mf* *< f* *ff* *pizz.*

Vc. *p* *ff* *pizz.*

Cb. *ff*

C





D

This page contains the musical score for measures 78 through 82. The instruments and their parts are as follows:

- Flute (Fl.):** Starts with *pp*, moves to *p*, then *mp > p*, and ends with *f* and *ppp*.
- Clarinet in B-flat (Cl. Sib.):** Starts with *mf*, moves to *p*, then *pp*, and ends with *f* and *ppp*. Includes a *gliss.* marking.
- Bassoon (Fag.):** Starts with *mf*, moves to *pp*, then *mf*, and ends with *ppp*. Includes *frull.* and *gliss.* markings.
- Cor Anglais (Cm.):** Starts with *pp*, moves to *ppp*, and ends with *pp*. Includes *sord.* and *gliss.* markings.
- Trumpet in B-flat (Tpt. en Sib.):** Starts with *pp* and *ppp*, then *p*, *ppp*, *ppp*, *p*, *ppp*, *pp*, and ends with *ppp*. Includes *sord.* marking.
- Trombone (Tbn.):** Starts with *mp*, moves to *p*, then *mp* and *pp*, and ends with *mp*. Includes *gliss.* markings.
- Violin I (P. I.):** Starts with *pp*, *mf*, and *pp*, then *ppp*, and ends with *f*. Includes *L.V.* and *arco* markings.
- Violin II (P. II.):** Starts with *Glisp*, then *L.V.*
- Violin III (P. III.):** Rests.
- Violin IV (P. IV.):** Rests. Includes *sobre agudos* and *a Mrcs.* markings.
- Vibraphone (P. V.):** Rests. Includes *Vib* and *pp* markings.
- Arpa (Arpa):** Rests. Includes *L.V.* marking.
- Piano (Pno.):** Rests. Includes *pp* marking.
- Violin (Vln.):** Starts with *p*, moves to *pp*, then *mp*, and ends with *pp*. Includes *sul pont.* and *gliss.* markings.
- Viola (Vla.):** Starts with *pp*, moves to *mf*, then *pp*, *mf*, *pp*, *f*, and ends with *pp*. Includes *sul pont.* marking.
- Violoncello (Vc.):** Starts with *ppp*, moves to *mf*, then *p*, *mf*, *pp*, and ends with *ppp* and *mp*. Includes *ord.* and *sul pont.* markings.
- Contrabasso (Cb.):** Starts with *p*, moves to *mf*, and ends with *mf*. Includes *pizz.* marking.

# El Bicho & Solo de Ella 3

## Escena III

83

**Fl.** *pp* *mf*

**Cl. Sib.** *ppp* *mp* *pp* *mf* *p*

**Fag.** *pp* *mf*

**Crn.** *pp*

**Tpt. en Sib.** *p* *pp* *ppp*

**Tbn.** *ppp* *sord.* *pp* *mf* *pp* *mf*

**P. I.** L.V. *mf* *pp* *ppp*

**P. II.** Glsp

**P. III.**

**P. IV.**

**P. V.** Vib *mp* *pp* *mp* *ppp* *baqueta suave*

**Arpa.** *mf* *mp* *mp* *pp* *pp* L.V. *mp* *pp*

**Pno.** *mp* *p* *mp* *p*

**Vln.** *ppp* *pp*

**Vla.** *ppp* *pp* *ppp* *pp* *ppp*

**Vc.** *ppp* *sul pont.* *p* *pp* *p*

**Cb.** *pp* *mf* *pp* *ppp* *pp* *p* *pp*

*arco sul pont.*

*G<sub>3</sub>* *a B<sub>b</sub> D<sub>b</sub>*

E

89

Fl. *pp* *mf*

Cl. Sib *f* *pp* *mf*

Fag. *pp* *f* *ff* *f* *ff* *f* *ff*

Crn. *p* *mf* *ff* *ppp* *p* *mf* *pp* *wah*

Tpt. en Sib *ppp* *ff* *p* *f* *pp* *ppp*

Tbn. *pp* *p* *mf* *ff* *ppp* *p* *mf* *pp*

P. I. *f* *p* *ppp* *f* *p* *ppp* *mp* *normal baqueta suave ord.* *L.V.*

P. II. *mp* *Gisp*

P. III. *mp* *a J.B.*

P. IV. *f* *a Ch.* *sobre medios* *p* *f*

P. V. *p* *pp* *ppp* *mp* *mf* *Vib*

Arpa *mp* *pp* *f* *mp* *L.V.* *Bb Db* *Dx* *Db*

Pno. *mf* *pp* *mp* *pp* *f* *ff* *f* *p* *f*

Vln. *pp* *mf* *pp*

Vla. *pp* *mf* *pp*

Vc. *pp* *ord.* *sul pont.*

Cb. *p* *pp* *gliss.* *gliss.* *gliss.*

93

Fl. *pp* *mf* *p*

Cl. Sib. *pp* *mf* *pp* *mf* *pp* *mp* *pp* *gliss.*

Fag. *mf* *ff* *pp*

Cor. *ppp* *mp* *f*

Tpt. en Sib. *mp* *f* *p* *f*

Tbn. *ppp* *f*

P. I. *mf* L.V. *baqueta dura* L.V. a Par20"

P. II. *mf* *Glisp* 3 *a Tri.*

P. III. *f*

P. IV. L.V.

P. V. *Vib* 3 *p*

Arpa *a Ab Eb G*

Pno. *f* *pp* *p* *f*

Vln. *f* *pp* *f* *mp* *pp* *mf* *pp* *f*

Vla. *f* *pp* *f* *mp* *pp* *mf* *pp* *f*

Vc. *f* *pp* *f* *mp* *pp* *mf* *pp* *f*

Cb. *mf* *gliss.* *gliss.* *gliss.*



100

Fl. *p* *ppp* *p*

Cl. Sib. *ppp* *p* *pp* *pp* *pp* *pp*

Fag. *f* *p*

Cm. *f* *pp* *f* *pp* *mf* *p*

Tpt. en Sib. wah *mf* *ppp* *f* *pp* *mf* *p* *pp* *mf* *p* *pp*

Tbn. *f* *pp* *f* *mp* *ff* *ppp* *mp* *ff*

P. I. L.V. a Plat. baqueta dura ord. baqueta suave *mf* *pp* *mp*

P. II. Glsp

P. III. L.V. *mp* *f*

P. IV. *f*

P. V. Vib *mp* *p* *mp* *p*

Arpa *mf* *mf* *mf* *mf* *mf*

Pno. *mf* *mp* *ff* *mf*

Vln. *pp* *pp*

Vla. sul pont. *ppp* *pp* *ppp* *pp*

Vc. (sul pont.) *p* *pp*

Cb. arco *mp* *f* *ppp* *pp*

Arpa Chords: *D♭ G♭* *B♭* *C♯ D♯* *G♯* *A♭*

G

105

Fl. *mf* *p* *ppp*

Cl. Sib *mf* *pp* *ppp*

Fag. *mf* *p* *ppp*

Cm. *ppp* *pp*

Tpt. en Sib *ppp*

Tbn. *pp* *ppp* *pp*

P. I. *f* *ppp* *f* *ppp* *f*

P. II. *mp* *L.V.* *3* *L.V.*

P. III. *ppp* *3* *3*

P. IV. *pp* *f* *ppp*

P. V. *pp* *mp* *3* *3* *5* *3* *5* *3* *5* *3* *6* *3* *ppp*

Arpa *mf*

Pno. *pp* *f* *mf* *mp* *p*

Vln. *pp* *f* *ppp*

Vla. *ppp* *mf* *pp* *ppp*

Vc. *f* *ppp*

Cb. *f*

baqueta dura

arco

—A: C: F: B: G: G:

109

Fl. *pp*

Cl. Sib *pp*

Fag. *pp*

Crn. *pp*

Tpt. en Sib *pp* *ppp*

Tbn. *pp*

P. I. *pp sfz < ff* *mf < f* *p* *ppp* L.V.

P. II. *Gls* *pp* *mp* *ppp*

P. III.

P. IV. *pp* *p* *apagar paulatinamente* L.V.

P. V. *Vib* *mp* *p* *pp*

Arpa *pp* *mp* *pp* *D<sup>b</sup>* *A<sup>b</sup>*

Pno. *pp*

Vln. *pp*

Vla. *pp*

Vc. *pp*

Cb.



Las Siamesas  
Escena IV

$\text{♩} = 250$

Flauta *ppp* *mf* *f* *p* *f* *p*

Clarinete en Sib *pp* *p* *mf* *f* *p*

Fagot *ppp* *mf* *f* *p* *f* *p*

Corno en Fa *ppp* *mf* *ppp* *mf*

Trompeta en Sib

Trombón *ppp* *mf*

Perc. I Par de 20"

Perc. II Jam Blocks

Perc. III Maracas *mf*

Percu. IV Pandereta *p*

Percu. V Vibráfono Vib

Arpa *mf* *B♭ D♯*

Piano *mf* *pp* *p*

$\text{♩} = 250$

Violín *mf* *pizz.*

Viola *mf* *pizz.*

Violonchelo *mf* *pizz.*

Contrabajo *mf* *pizz.*

A

11

Fl. *f* *p* *mf* *f*

Cl. Sib *f* *p* *mf* *f* *ff* *f*

Fag. *f* *p* *f* *p < f* *p < f* *p < f*

Crn. *p < f* *p f* *pp* *mf* *p < f*

Tpt. en Sib *mf* *p < f* *p < f* *pp* *mf* *p < f*

Tbn. *p < f* *p f* *pp* *mf* *p < f*

P. I. *mp* L.V.

P. II.

P. III. *f* a Cab.

P. IV. *f*

P. V. *Vib*

Arpa *f*

Pno. *pp*

Vln. *mp*

Vla. *arco*

Vc. *arco*

Cb. *mp*

A

22

Fl.

Cl. Sib.

Fag.

Crn.

Tpt. en Sib.

Tbn.

P. I.

P. II.

P. III.

P. IV.

P. V.

Arpa

Pno.

Vln.

Vla.

Vc.

Cb.

*p < f* *mf*

*mf* *tr* *mf* *mp* *mf*

*mf* *tr* *mf* *mp* *mf*

*mf* *tr* *f* *mf*

*mp* *a Shk.* *p* **Shaker**

*mp*

*mf* *a F#*

*mp* *mf* *p*

*pp* *ff* *f* *pizz.*

*p*

*arco* *mf*



C

44

Fl.

Cl. Sib.

Fag.

Crn.

Tpt. en Sib.

Tbn.

P. I.

P. II.

P. III.

P. IV.

P. V.

Arpa

Pno.

Vln.

Vla.

Vc.

Cb.

*ff* *mp* *f*

*ff* *mp* *f*

*ff* *mf*

*ff* *f* *mp* *f*

*ff* *mf*

*mf* *p*

*f* *mp* *pp*

*p* *f*

*Vib*

*f* *p* *f*

*ff* *p* *f*

*mp* *f* *mf* *p*

*mf* *pizz.*

L.V. a Plat. Platillos 10" 14" 18" 22"

a Tri. Triángulo

a Casc.

*D<sub>4</sub>* *F<sub>4</sub>* *A<sub>4</sub>* *a B<sub>4</sub>*



E

64

Fl.

Cl. Sib.

Fag.

Crn.

Tpt. en Sib.

Tbn.

P. I.

P. II.

P. III.

P. IV.

P. V. Vib

Arpa

Pno.

E

Vln.

Vla.

Vc.

Cb.

72

Fl.

Cl. Sib

Fag.

Crn.

Tpt. en Sib

Tbn.

P. I.

P. II.

P. III.

P. IV.

P. V.

Arpa

Pno.

Vln.

Vla.

Vc.

Cb.

*mf*

*p* *f*

*p* *f* *mf*

*p* *f* *mf*

*p* *f* *mf*

*gliss*

*mp*

*mp*

*p* *mp*

*p* *mf*

*p* *mf*

*mp*



80

Fl. *f*

Cl. Sib *f*

Fag. *ff*

Crn. *p* *tr*

Tpt. en Sib *p* *tr*

Tbn. *p* *tr*

P. I.

P. II.

P. III. *3*

P. IV.

P. V. *Vib*

Arpa *p*

Pno.

Vln.

Vla.

Vc.

Cb. *3*

F

85

Fl. *ff*

Cl. Sib *ff*

Fag. *mf* *f* *ff*

Crn. *mf* *p* *f* *p* *f* *mf* *f* *gliss.* *tr* *ff*

Tpt. en Sib *mf* *p* *f* *p* *f* *mf* *f* *gliss.* *tr* *ff*

Tbn. *f* *p* *f* *p* *f* *mf* *f* *gliss.* *tr* *ff*

P. I. *mp* *mf* *f* L.V.

P. II. *mp* a Tri.

P. III. *f* *mf* a Bph.

P. IV. *f* *p* *f* *f* *p* *f* *f*

P.V. *f* *mf* Vib.

Arpa *mp* *Ab* *a A# Bb* *A#* *Bb*

Pno. *f* *mf* *f* *mf* *f*

Vln. *ff* *mp* *mf* *p* arco

Vla. *ff* *mf* *mp* *f* *p* *mf* arco

Vc. *ff* *mp* *f* *p* *f* arco

Cb. *ff*



G

101

Fl. *p* *f* *ff* *mp* *ff*

Cl. Sib *p* *ff* *p* *f*

Fag. *p* *pp* *p* *ff* *mf* *f* *ff*

Cm. *p* *p* *ff* *p* *f*

Tpt. en Sib *p* *p* *ff* *p* *f*

Tbn. *p* *p* *ff* *p* *f*

P. I. *p* *mf* *f* L.V.

P. II. *mf* a J.B. a Tri.

P. III.

P. IV. *f*

P. V. *vib*

Arpa

Pno. *f* *p* *ff* *mp* *ff* *mf* *f*

G

Vln. *mp* *p* *ff* *mp* *f*

Vla. *mp* *p* *ff* *mf* *f*

Vc. *mp* *p* *ff* *p* *f*

Cb. *f* *mp* *ff* *mf* *ff*

*pizz.*

H

112

Fl. *frull.* *f* *p* *f* *mf*

Cl. Sib *ff* *p* *f* *mf*

Fag. *p* *f* *mp*

Crn. *ff* *p* *f*

Tpt. en Sib *ff* *p* *f* *mf* *3* *3* *3* *3*

Tbn. *ff* *p* *f*

P. I. *mf* L.V.

P. II. *mp* L.V. *a J.B.* L.V. *mf*

P. III. *ppp*

P. IV. *a Vslp.* *mf* *3*

P.V. *Vib* *p*

Arpa *mf* *mf*

Pno. *mf* *ff* *f*

Vln. *pizz.* *b* *arco* *mf* *mp*

Vla. *pizz.* *b* *arco* *mf* *f* *p* *f*

Vc. *mf* *f* *p*

Cb. *f* *f* *ff* *gliss.*

120

Fl.

Cl. Sib

Fag.

Ctn.

Tpt. en Sib

Tbn.

P. I.

P. II.

P. III.

P. IV.

P. V.

Arpa

Pno.

Vln.

Vla.

Vc.

Cb.

*mf*

*fp*

*ff*

*f*

*ff*

*mf*

*f*

*mf*

*f*

*fp*

L.V.

Vibraslap

*f*

L.V.

Vib

*mf*

*f*

*f*

*p*

*f*

*p*

*f*

*p*

*f*

*pp*

*ff*

*f*

127

Fl.

Cl. Sib

Fag.

Crn.

Tpt. en Sib

Tbn.

P. I.

P. II.

P. III.

P. IV.

P. V.

Arpa

Pno.

Vln.

Vla.

Vc.

Cb.

*mf* *fp* *f* *fp*

*gliss.* *mf* *fp*

L.V. a Plat.

Vib

*f*

*p* *f* *pp* *f* *p* *f*

129

Fl. *f*

Cl. Sib *mp* *f*

Fag. *f*

Crn. *f*

Tpt. en Sib *f*

Tbn. *f*

P. I.

P. II.

P. III.

P. IV. a Ch.

P. V. *f* *mf*

Arpa *mf* *f* *p* *f*

Pno. *ff*

Vln. *mf* *f* *mf* *f* *mp*

Vla. *mf* *f*

Vc. *f*

Cb. arco *f*



132

Fl.

Cl. Sib

Fag.

Crn.

Tpt. en Sib

Tbn.

P. I.

P. II.

P. III.

P. IV.

P. V.

Arpa

Pno.

Vln.

Vla.

Vc.

Cb.

*mp* *mf* *f* *ff* *ord.* *L.V.* *a Par 20"* *a Tri.* *a Shk.* *Wind Chimes* *Vib* *a Pa* *P*

141

Fl.

Cl. Sib.

Fag.

Crn.

Tpt. en Sib.

Tbn.

P. I.

P. II.

P. III.

P. IV.

P. V.

Arpa

Pno.

Vln.

Vla.

Vc.

Cb.

*ff*

*gliss.*

*ff*

*f*

*p*

*mf*

*f*

L.V.

*a Fz*

*sw*

146

Fl.

Cl. Sib.

Fag.

Cor.

Tpt. en Sib.

Tbn.

P. I.

P. II.

P. III.

P. IV.

P. V.

Arpa

Pno.

Vln.

Vla.

Vc.

Cb.

*ff*

*p* *f*

*ff* *f* *ff*

*p* *mf* *f*

*p* *f* *ff* *f* *ff*

L.V.

Vib

*F<sup>z</sup>* *F<sup>z</sup>*

*ff*

rit. . . . .

151

Fl. *p* *mf*

Cl. Sib *p* *mp* *mf*

Fag. *pp* *mp* *mf*

Crn. *pp* *mp* *mf*

Tpt. en Sib *ff* *pp* *mp* *mf*

Tbn. *pp* *mf*

P. I.

P. II.

P. III. a Cab.

P. IV.

P. V. *Vib*

Arpa

Pno.

Vln. *pp* *mp* *mf*

Vla. *p* *mf*

Vc. *pp* *mp* *mf*

Cb. *pizz.* *vb.* *f*

♩=250

166

Fl.

Cl. Sib

Fag.

Crn.

Tpt. en Sib

Tbn.

P. I.

P. II.

P. III. *mf* *mp*

P. IV. *p*

P.V. **Vib**

Arpa *mf*

Pno. *p*

Vln. *pizz.* *mp*

Vla. *pizz.* *mp* arco *mf*

Vc. *pizz.* *mp* arco *mf*

Cb.

♩=250

174

Fl.

Cl. Sib.

Fag.

Crn.

Tpt. en Sib.

Tbn.

P. I.

P. II.

P. III.

P. IV.

P. V.

Arpa

Pno.

Vln.

Vla.

Vc.

Cb.

*p*

*mf*

*mf*

*p*

*mf*

*p*

*mf*

*mf*

*f*

*mp*

*mp*

*mf*

*arco*

*sin golpear*

181

Fl.

Cl. Sib.

Fag.

Cm.

Tpt. en Sib.

Tbn.

P. I.

P. II. *mf* *p* *mf*

P. III.

P. IV.

P.V. *Vib*

Arpa

Pno.

Vln.

Vla.

Vc.

Cb.

191

Fl.

Cl. Sib

Fag.

Crn.

Tpt. en Sib

Tbn.

P. I. L.V.

P. II. a J.B./Tri. *f*

P. III. *f*

P. IV. a Vslp. *f*

P.V. Vib

Arpa *f*

Pno. *mp*

Vln.

Vla.

Vc.

Cb.



J

♩=160

200

Fl.

Cl. Sib.

Fag.

Crn.

Tpt. en Sib.

Tbn.

P. I.

P. II.

P. III.

P. IV.

P. V.

Arpa

Pno.

Vibra. (Vibraslap)

Vib.

mp, mf, p, mp, p, mf, mp, p, mp, mf, mp

L.V. a Par 20'

mp, p, mf, mp, p, mp, mf, mp

mf, mp, mf, p, mp

J

♩=160

Vln.

Vla.

Vc.

Cb.

pizz.

mp, mf, p, mp, p, mf, mp, mf, p, mp, mf, mp

210

Fl. *frull.* *f* *ff* *mp* *f* *mp* *f* *mp* *f* *ff*

Cl. Sib *f* *mf* *f* *ff*

Fag. *f* *mf* *f* *ff*

Crn. *f* *mf* *f* *ff*

Tpt. en Sib *f* *mf* *p* *f* *p* *ff*

Tbn. *f* *mf* *f* *ff*

P. I. *mf* L.V.

P. II. *f*

P. III.

P. IV.

P. V. Vib.

Arpa

Pno. *f* *mf* *f* *ff*

Vln. *f* *arco* *mf* *ff*

Vla. *f* *arco* *mf* *ff*

Vc. *f* *arco* *mf* *ff*

Cb. *f* *arco* *mf* *ff*

# La Balsa

## Escena V

♩=90

Flauta

Clarinete en Sib

Fagot

Corno en Fa

Trompeta en Sib

Trombón

Percu. I Platillos 10" 14" 18" 22"

Percu. II Triángulo

Percu. III Jam Blocks

Percu. IV Cabasa a Bil.

Percu. V Vibráfono Vib

Arpa *f* *mp* *pp* *mp* *f* *silencio absoluto*

Piano *pp* *p* *silencio absoluto* *p*

Violín *pizz.* *p*

Viola *pizz.* *p*

Violonchelo *pizz.* *p*

Contrabajo *pizz.* *p*

7

Fl.

Cl. Sib.

Fag.

Crn.

Tpt. en Sib.

Tbn.

P. I. arco *pp* *mf* L.V. *pp* *mf*

P. II. L.V. *pp* a Glock.

P. III.

Bell. *pp* L.V.

P. IV. a Bot. *mp* Botellas *pp* *mf* *ppp* *mf* *ppp* a Casc.

Vib.

P. V.

Arpa *mp* *pp* *f* *p* *pp* *f*

Pno. normal *ppp* silencio absoluto L.V. *p* silencio absoluto normal L.V. *p* *pp* *p*

Vln.

Vla.

Vc.

Cb.

A

13

Fl. *p* *mp* *p* *mp* *ppp*

Cl. Sib

Fag.

Crn.

Tpt. en Sib

Tbn.

P. I. *p* *baqueta suave* L.V. *baqueta dura* L.V.

P. II. *p* Glockenspiel *Gisp* L.V. L.V. L.V. L.V. *a Tri.*

P. III.

P. IV. *Cascabeles* *ppp* *mf* *a Ch.*

P. V. *Vib* *mp*

Arpa *mf* *mp* *a F#* *F#*

Pno. *mf siempre* *mp* *mf*

A

Vln. *pp*

Vla.

Vc.

Cb.

17

Fl. *mp* *pp p* *pp p* *pp p* *pp p* *p* *pp* *p* *ppp*

Cl. Sib. *mp* *f*

Fag. *mp* *f*

Crn.

Tpt. en Sib.

Tbn.

P. I. *mp* L.V. L.V. L.V.

P. II. *p* L.V.

P. III.

P. IV. Wind Chimes *ppp* *mp* L.V. a Pand. Pandereta *mp*

P. V. Vib.

Arpa *mf*

Pno. *p* *mf*

Vln.

Vla.

Vc.

Cb.

21

Fl. *mp* *mf* *ppp*

Cl. Sib *mp* *mf*

Fag. *mp* *mf* *f*

Crn. *p* *mp* *p* *mp* *p* *f*

Tpt. en Sib *p* *mp* *p* *mp* *p* *f*

Tbn. *p* *mp* *p* *mp* *p* *f*

P. I. baqueta suave ord. L.V. baqueta dura L.V.

P. II. Glsp L.V.

P. III. *f* *ppp*

P. IV. a Ch. *p* *f* *ppp*

P. V. Vib. *mf*

Arpa *mf* a Ch.

Pno. *p* *mf*

Vln. Vla. Vc. Cb.

**B**

25

Fl. *mp* *p* *f* *ppp*

Cl. Sib *mp* *p* *f* *ppp*

Fag. *p* *mp*

Crn. *p*

Tpt. en Sib *p*

Tbn. *mp*

P. I. *p* *mp* L.V.

P. II. *Gisp* *a Tri.* L.V.

P. III. *mp* *mf*

P. IV. *pp* *mf* *ppp* *f* *a Ch.*

P. V. *Vib*

Arpa *L.V. (siempre)* *silencio absoluto* *mp* *a Bb Eb*

Pno. *p* *mf*

**B**

Vln.

Vla.

Vc.

Cb.



30

Fl. *mp*

Cl. Sib *mf* *mp*

Fag. *p* *mp*

Cor. *mp* *ppp*

Tpt. en Sib *mp* *ppp*

Tbn. *ppp*

P. I. baqueta suave ord. L.V. L.V.

P. II. *p* L.V. a Glock.

P. III.

P. IV. *ppp* *f* *ppp* L.V.

P. V. *Vib*

Arpa *Bb Eb* *F#* *a F#*

Pno.

Vln. arco *p* *f* *p* *f* *pp* *p* *f*

Vla. arco *p* *mf* *p* *f* *p* *f* *pp*

Vc. arco *pp* *mp*

Cb. arco *pp* *mp*

34

Fl. *mf* *ppp*

Cl. Sib

Fag. *mp*

Cor. *mp* *ppp*

Tpt. en Sib *mp*

Tbn. *mp*

P. I. *mf*

P. II. *p* a Tri. L.V.

P. III.

P. IV. *f* *ppp* L.V. a Casc.

P. V. *mf* Vib.

Arpa *f* *E<sup>b</sup>* *E<sup>b</sup>* *E<sup>b</sup>* *f* *a B<sup>b</sup> E<sup>b</sup>*

Pno. *p*

Vln. *mf*

Vla. *mf*

Vc. *pp* *mp* *p* *pp*

Cb. *pp* *mp* *p* *pp* *p* *pp*

C

38

Fl. *mp* *ppp*

Cl. Sib *mf* *ppp*

Fag. *ppp*

Crn. *p*

Tpt. en Sib *pp* *p* *mp* *pp*

Tbn. *p*

P. I. *f* *mf* *mp* *f*  
baqueta suave ord. L.V. L.V. L.V. L.V.

P. II. *p* L.V. *f*

P. III.

P. IV. *ppp* *f* a Bot.

P. V. *p*

Arpa *mf* *Bb Eb* *Bb* *a Eb*

Pno. *mf*

Vln. *f* *mp*

Vla. *mp* *f*

Vc. *pp* *p* *mp* *p* *pp*

Cb. *pp* *p* *mp* *p* *pp*

C

43

Fl.

Cl. Sib

Fag.

Crn.

Tpt. en Sib

Tbn.

P. I.

P. II.

P. III.

P. IV.

P. V.

Arpa

Pno.

Vln.

Vla.

Vc.

Cb.

*p*

*ppp*

*mp*

*pp*

*f*

*pp*

*mf*

*ppp*

*mf*

arco

L.V.

L.V.

a Par 20"

Gisp

Vib

*E<sub>b</sub>*

*E<sub>b</sub>*

*E<sub>b</sub>*

*a D<sub>b</sub>*

D

49

Fl.

Cl. Sib.

Fag.

Crn.

Tpt. en Sib.

Tbn.

P. I.

P. II.

P. III.

P. IV.

P. V.

Arpa

Pno.

Vln.

Vla.

Vc.

Cb.

mp

ppp

p

mf

pp

senza sord.

Par de 20"

L.V.

Gisp

L.V.

L.V.

a Ch.

Vib

mp

D<sub>b</sub> B<sub>b</sub> D<sub>b</sub> F<sub>#</sub> a A<sub>#</sub>

pizz.

mp

pizz.

mp

pizz.

mp

pizz.

mp

p

mf

p

mf

D

54

Fl. *mf*

Cl. Sib *mp*

Fag. *p* *mf* *p* *p* *mf* *p*

Crn.

Tpt. en Sib *p* *mf* *p* *mf* *p*

Tbn.

P. I.

P. II. *Gisp* *mp*

P. III.

P. IV.

P. V. *Vib*

Arpa *mf*

Pno.

Vln.

Vla.

Vc.

Cb.

*ppp* *f*

*A#* *Eb F#* *Bb* *A#*

E

58

Fl. *f*

Cl. Sib *mf* *f*

Fag. *f* *pp* *p* *f* *pp* *mf*

Crn. *mp*

Tpt. en Sib *mp* *mf*

Tbn. *mp* *mf*

P. I. *f* L.V. a Plat. arco *mp* *ff* L.V.

P. II. *p* Glsp L.V. L.V. L.V.

P. III. a Bph. *f*

P. IV. *ppp* a Bot. L.V.

P. V. Vib L.V. L.V. L.V.

Arpa *mp* *mp* *f* *ff* *a C# Eb*

Pno.

E

Vln. *f*

Vla. *f*

Vc. *f*

Cb. *f*





F

66

Fl. *mf* *mp* *mf*

Cl. Sib *mf* *p* *mf*

Fag. *mf* *f*

Crn. *mp* *pp*

Tpt. en Sib *p* *pp*

Tbn. *mp*

P. I. *f* *L.V.*

P. II. *p* *L.V.* *a Tri.*

P. III. *pp* *L.V.*

P. IV. *ppp* *L.V.* *a Pand.*

P. V. *mp* *L.V.*

Arpa *f* *mf* *a Ab Bb Eb*

Pno. *mp* *p*

F

Vln. *mf* *f*

Vla. *arco* *p* *f* *p* *f* *pp* *p* *f* *p* *f* *p* *pp* *mf* *ppp* *mf* *f* *ppp*

Vc. *p* *f* *p* *f* *pp* *p* *f* *p* *f* *p* *pp* *mf* *ppp* *mf* *ppp*

Cb. *arco* *mf* *f* *mf* *f* *mf*

70

Fl. *p mf f > p < f > pp < f > pp < f > pp mf*

Cl. Sib *p < f > p mf < p > f < p > f p < f > pp p < f > p < f > pp*

Fag. *mf* *p f*

Crn. *p mp p mf p*

Tpt. en Sib *p* *pp*

Tbn. *> p mp p mf p*

P. I.

P. II. *mp* *L.V.*

P. III.

P. IV. *pp f ppp* *L.V.* *a Casc.*

Vib. *pp f ppp*

P. V. *f pp mf pp f*

Arpa *mf* *mp* *B: A: A: E: B: D: A: A: A: (A)*

Pno.

Vln. *mf* *pp mf pp mf pp mf pp*

Vla. *p < f > p f p < f > pp p < f > p < f > p mf f > p < f > pp < f > pp < f > pp*

Vc. *p < f > p < f > pp p < f > p < f > p pp < f > ppp mf < f > ppp*

Cb. *p < f > p mf < p > f < p > f p < mf > p mf < p > f p < f > p*



78

Fl. *mf* *f* *ff*

Cl. Sib *mp* *f* *ff*

Fag. *mp* *mf* *f* *ff*

Crn. *p* *mp* *p* *mf* *p* *ff*

Tpt. en Sib *f* *p* *ff*

Tbn. *p* *mp* *p* *mf* *p* *ff*

P. I. *f* *mf* *f* *p*  
L.V. *baqueta suave ord.* L.V. L.V.

P. II. *mp*

P. III. *p* *mp*

P. IV. *ppp* *ff* *pp* a Pand.

P. V. *Vib*

Arpa *ff* *mf*  
E<sup>b</sup> E<sup>b</sup> G<sup>b</sup> G<sup>b</sup> B<sup>b</sup> A<sup>b</sup> B<sup>b</sup> A<sup>b</sup>

Pno. *p* *p* *senza ♯* *♯*

Vln. *p* *f* *p* *f* *mf* *ppp* *p* *ff* *p* *f* *mf* *ppp* *pp* *mf* *pp* *mf* *f*

Vla. *f* *p* *f* *pp* *p* *f* *ppp* *p* *ff*

Vc. *f*

Cb. *mf* *f* *p* *f* *p*

G

82

Fl. *f* *mp* *mf*

Cl. Sib *f* *p* *mf*

Fag. *f* *mf* *f*

Crn. *mf*

Tpt. en Sib *mf*

Tbn. *mf* *p* *mf*

P. I. *ff* *mf* *p* *ff* L.V. L.V. L.V.

P. II. *mf* Glsp

P. III. L.V. L.V. L.V.

P. IV. *mf*

P. V. *mf* Vib

Arpa *f* *f* *Bb Eb* *Bb* *Bb*

Pno. *f* *f*

Vln. *p* *mf* *p* *mf*

Vla. *mp* *f*

Vc. *mf* *f*

Cb. *ff*

G

85

Fl. *ff* *mf*

Cl. Sib *ff* *mp*

Fag. *mf* *ff* *mf*

Crn. *f* *p* *mp*

Tpt. en Sib *f*

Tbn. *f* *p* *mp*

P. I. *f* *silencio absoluto*

P. II. *Glsp* *mp*

P. III. *a J.B. L.V.* *mp* *a Bph.*

P. IV. *a Cab.* *p* *f*

P. V. *Vib*

Arpa *mf*

Pno. *mf* *p*

Vln. *ppp* *pizz.* *mp*

Vla. *pp* *pizz.* *mp*

Vc. *pp* *pizz.* *mf*

Cb. *pp* *pizz.* *mf*

H rall.

♩=45

87

Fl. *p* *ppp*

Cl. Sib *p* *ppp*

Fag. *p* *ppp*

Cor. *p* *mp* *p* *ppp*

Tpt. en Sib *pp* *p* *pp* *p* *ppp*

Tbn. *p* *mp* *p* *ppp*

P. I. *p* *baqueta dura* *L.V.*

P. II. *pp* *L.V.*

P. III. *mp* *L.V.*

P. IV. *mf* *f* *mf*

P. V. *L.V.*

Arpa *mp* *p* *mf* *mp* *p* *pp*

Pno. *mf* *mp* *p*

Viol. *p*

Vla. *p*

Vcl. *p* *pp*

Cb. *p*

♩=45





Los Recortes  
Escena VI

$\text{♩} = 60$

Flauta

Clarinete en Sib

Fagot

Corno en Fa

Trompeta en Sib

Trombón

Perc. I Shaker

Perc. II Glockenspiel Glsp

Perc. III Jam Blocks

Perc. IV Pandereta

Perc. V Vibrafono Vib

Arpa

Piano

$\text{♩} = 60$

Violín

Viola

Violonchelo

Contrabajo

6

Fl. *p*

Cl. Sib

Fag.

Crn. *p*

Tpt. en Sib

Tbn.

P. I.

P. II. *Glsp*

P. III.

P. IV.

P. V. *Vib* *p*

Arpa *mp*

Pno. *p* *pp*

Vln. *arco* (sul pont.) *pp*

Vla. *mf* (sul pont.) *pp*

Vc. *mf* *p* (sul pont.) *pp*

Cb. *mf* *pp* *pp*

10

Fl.

Cl. Sib

Fag.

Crn.

Tpt. en Sib

Tbn.

P. I.

P. II.

P. III.

P. IV.

P. V.

Arpa

Pno.

Vln.

Vla.

Vc.

Cb.

*p*

*pp*

senza sord.

*p*

*pp*

Gliss

Vib

*gliss.*

*gliss.*

2

A

14

Fl. *pp* *mf* *p*

Cl. Sib

Fag. *mf* *p*

Crn. *pp* *sf*

Tpt. en Sib *p* *pp*

Tbn.

P. I.

P. II. *Gisp*

P. III.

P. IV.

P. V. *Vib* *mf*

Arpa

Pno.

*A♯ F♯* *G♯*

A

Vln. *pizz.* *p*

Vla. *pizz.* *p*

Vc. *pizz.* *p*

Cb. *pizz.* *p*

21

Fl.

Cl. Sib.

Fag.

Crn.

Tpt. en Sib.

Tbn.

P. I.

P. II.

P. III.

P. IV.

P. V.

Arpa

Pno.

Vln.

Vla.

Vc.

Cb.

*p* *f*

*pp* *mf* *f*

*pp* *mf* *pp*

*gliss.* *pp* *mf*

*pp* *mf*

*G♯ A?* *D♯ F?*

*mf* *mp* *mf* *f*

*mf* *pp* *f*

*pp* *mf* *pp* *mf*

*arco ord.* *pp* *mf* *pp*

*arco ord.* *pp* *sul pont.* *mf*

28

Fl. *pp* *p* *f*

Cl. Sib *pp* *p* *f*

Fag. *p* *f* *pp* *ff*

Crn. *p* *f* *p* *f*

Tpt. en Sib *p* *pp* *mp* *mf* *f*

Tbn. *f* *p* *f*

P. I.

P. II. *f* L.V.

P. III.

P. IV.

P. V. *Vib.*

Arpa *L.V.* *L.V.* *L.V.* *f*

Pno. *mf* *L.V.* *L.V.* *f*

Vln. *mf* *pp* *f*

Vla. *mf* *pp* *f*

Vc. *mf* *pp* *f*

Cb. *pp* *f*

*a A<sup>b</sup> B<sup>b</sup> D<sup>b</sup> G<sup>b</sup>*

33

Fl. *p* *mp*

Cl. Sib *pp* *p*

Fag. *mp*

Crn. *p*

Tpt. en Sib *p*

Tbn. *p*

P. I.

P. II. *p* *Glsp*

P. III.

P. IV.

P. V. *pp* *mp* *mf* *mp* *f* *Vib*

Arpa *mf* *B#* *A#* *B#* *C#* *G#*

Pno. *mp* *p*

B

rit.

Vln. *pp* *mf* *pp* *f* *pp* *mp* *arco ord.*

Vla. *ppp* *pp* *f* *pp* *p* *mp* *arco ord.*

Vc. *pp* *mf* *pp* *mp* *ord.* *sul pont.*

Cb. *pp* *mp* *ord.* *sul pont.* *ord.*

$\text{♩} = 170$

40

Fl.

Cl. Sib

Fag.

Crn.

Tpt. en Sib

Tbn.

P. I.

P. II. **Glsp**

P. III.

P. IV.

P. V. **Vib**

Arpa

Pno.

$\text{♩} = 170$

Vln.

Vla.

Vc.

Cb.

The musical score for page 104, measures 40-43, is presented in a standard orchestral layout. It includes parts for woodwinds (Flute, Clarinet in B-flat, Bassoon, Cor Anglais, Trumpet in B-flat, Trombone), percussion (P. I. through P. V.), strings (Violin I, Violin II, Viola, Violoncello, Contrabasso), and piano. The tempo is marked as  $\text{♩} = 170$ . Measures 40-43 feature sustained notes in the woodwinds and strings, and rhythmic patterns in the percussion and piano. Dynamic markings include *pp*, *mp*, and *p*. The score is written for a full orchestra and includes parts for woodwinds, percussion, strings, and piano.



44

Fl. *p*

Cl. Sib *p*

Fag. *p*

Crn. *p*

Tpt. en Sib

Tbn. *pp* *mp* *mf* *f*

P. I.

P. II. *Glsp*

P. III.

P. IV.

P. V. *Vib*

Arpa *mf* *mp*

Pno. *mf* L.V. L.V.

Vln. *ppp*

Vla. *ppp*

Vc. *ppp* *pizz.* *mf*

Cb. *ppp* *pizz.* *mf*

C

48

Fl. *pp*

Cl. Sib *pp*

Fag. *pp*

Crn. *pp*

Tpt. en Sib

Tbn.

P. I.

P. II. *Gisp*

P. III.

P. IV.

P. V. *Vib* *mp*

Arpa

Pno. *f*

Vln. *mp*

Vla. *mp*

Vc. *mf*

Cb. *f*

*a Bb*

52

Fl. *mp* *mf*

Cl. Sib *mp*

Fag. *p* *mp* *p*

Crn. *p* *mf* *p* *p* *mp* *p*

Tpt. en Sib *p* *mp* *p*

Tbn. *p* *mf* *p* *p* *mp* *p*

P. I. *pp* a Par 20"

P. II. *mf*

P. III. *p*

P. IV. *p* *mp*

P. V. *Vib*

Arpa *mf*

Pno. *B $\flat$*

Vln. *pizz.* *mp*

Vla. *pizz.* *mf*

Vc.

Cb.

D

♩=85

56

Fl.

Cl. Sib

Fag.

Crn.

Tpt. en Sib

Tbn.

*pp mp p mp f*

*p mf*

*mp p mp pp*

*mp p*

*mp p*

Par de 20"

P. I.

P. II.

P. III.

P. IV.

P. V.

*mf*

Vib

Arpa

*C♯ G*

Pno.

D

♩=85

Vln.

Vla.

Vc.

Cb.

*arco ord. mf*

*arco pizz. arco*

64

Fl.

Cl. Sib

Fag.

Crn.

Tpt. en Sib

Tbn.

P. I.

P. II. *Gisp*

P. III.

P. IV.

P. V. *Vib*

Arpa

Pno.

Vln.

Vla. *pizz.*

Vc.

Cb.

*pp* *mp* *pp* *pp* *mp* *p* *mp* *pp* *pp* *mp* *pp* *p*

68

Fl.

Cl. Sib

Fag.

Crn.

Tpt. en Sib

Tbn.

P. I.

P. II. *Glsp*

P. III.

P. IV.

P. V. *Vib*

Arpa

Pno.

Vln.

Vla.

Vc.

Cb.

*mf*

*mp* *pp* *p*

*p* *pp* *ppp*

*mp* *pp*

*mp* *pp* *p*

*mp* *pp* *p*

*p* *pp* *ppp*

*mp* *pp*

*mp*

*mp*

Detailed description: This page of a musical score, numbered 110, contains measures 68 through 71. The score is arranged in a standard orchestral format with multiple staves. The woodwind section includes Flute (Fl.), Clarinet in B-flat (Cl. Sib), Bassoon (Fag.), Cor Anglais (Crn.), Trumpet in B-flat (Tpt. en Sib), and Trombone (Tbn.). The brass section includes Percussion I (P. I.), Percussion II (P. II. with Glispede - Glsp), Percussion III (P. III.), Percussion IV (P. IV.), and Percussion V (P. V. with Vibraphone - Vib). The string section includes Arpa (Harp), Piano (Pno.), Violin (Vln.), Viola (Vla.), Violoncello (Vc.), and Contrabasso (Cb.). The woodwinds and strings play melodic lines with various articulations and dynamics. The percussion parts feature complex rhythmic patterns, including triplets and sixteenth-note runs. Dynamic markings such as *mf*, *mp*, *pp*, *p*, and *ppp* are used throughout to indicate volume levels. The score is written in a key signature of two flats and a common time signature.

E

72

Fl. *pp* *mf*

Cl. Sib *pp*

Fag.

Cor. *mp*

Tpt. en Sib

Tbn. *mp*

P. I.

P. II. *Gisp*

P. III.

P. IV.

P. V. *Vib* *mp*

Arpa

Pno.

E

Vln. *pp*

Vla.

Vc.

Cb.

76

Fl.

Cl. Sib

Fag. *mp*

Crn.

Tpt. en Sib

Tbn.

P. I.

P. II. *Gisp*

P. III.

P. IV. *a Vslp.*

P. V. *Vib*

Arpa

Pno.

Vln.

Vla.

Vc.

Cb.



F

80

Fl.

Cl. Sib

Fag.

Crn.

Tpt. en Sib

Tbn.

P. I.

P. II.

P. III.

P. IV.

P. V.

Arpa

Pno.

Vln.

Vla.

Vc.

Cb.

*pp*

*f*

*p*

*pp*

*p*

*mf*

*mp*

*mp*

*f*

*mf*

*pizz.*

*p*

*p*

*arco*

*pp*

84

Fl.

Cl. Sib

Fag.

Crn.

Tpt. en Sib

Tbn.

P. I.

P. II.

P. III.

P. IV.

P. V.

Arpa

Pno.

Vln.

Vla.

Vc.

Cb.

*pp*

*mp*

*p*

*mf*

*mf*

*mf*

*p*

*mf*

G

88

Fl.

Cl. Sib.

Fag.

Crn.

Tpt. en Sib.

Tbn.

P. I.

P. II. *Gisp*

P. III.

P. IV.

P. V. *Vib*

Arpa

Pno.

*pp* ————— *f*

*pp* ————— *f*

G

Vln.

Vla.

Vc.

Cb.

*pp* ————— *mp* ————— *mf*

*pp* ————— *mp* ————— *mf*

*pp* ————— *mp* ————— *mf*

*pp* ————— *mp* ————— *mf*

94

Fl. *mp* *pp* *mf*

Cl. Sib *mp* *pp*

Fag. *mf* *mp* *pp*

Crn. *mp* *p* *mp* *f* *mp* *p*

Tpt. en Sib *pp* *mp* *mf* *p* *pp*

Tbn. *mp* *p* *mp* *ff* *mp* *gliss.* *gliss.*

P. I.

P. II. *Glsp*

P. III.

P. IV.

P. V. *Vib* *pp* *f*

Arpa *f* *mp*

Pno.

Vln.

Vla.

Vc.

Cb.

99

Fl.

Cl. Sib

Fag.

Crn.

Tpt. en Sib

Tbn.

P. I.

P. II.

P. III.

P. IV.

P. V.

Arpa

Pno.

Vln.

Vla.

Vc.

Cb.

*mp* *mf* *f*

*p* *mp* *mf* *p* *mf* *f*

*p* *mp* *mf* *p*

*p* *mp* *mf* *p*

*p* *mp* *mf* *p*

*Gisp*

*Vib*

*A<sup>b</sup> B<sup>b</sup> C<sup>b</sup> D<sup>b</sup> E<sup>b</sup> F<sup>b</sup> G<sup>b</sup>*

arco ord.

*mf*

104

Fl. *p* *mf*

Cl. Sib

Fag. *mp* *mf*

Crn. *mf*

Tpt. en Sib *mp*

Tbn. *mf*

P. I.

P. II. *Gisp*

P. III.

P. IV. *a Ch.*

P. V. *Vib* *mp*

Arpa *f*

Pno. *f* *A: C#* *A: G* *Bb* *Ab* *G#-G*

Vln. *mf* *arco* *f*

Vla. *f* *pizz.* *mf*

Vc. *mf*

Cb. *mf*

108

Fl.

Cl. Sib

Fag.

Crn.

Tpt. en Sib

Tbn.

P. I.

P. II.

P. III.

Ch.

P. V.

Arpa

Pno.

Vln.

Vla.

Vc.

Cb.

*mp* *mf* *mp* *p* *mf* *p*

*p* *mp* *p* *pp*

*mp* *mf* *mp* *mf* *p*

*mp* *mf* *mp* *mf* *pp*

*p* *pp*

*G<sup>+</sup>* *G<sup>+</sup> D<sup>b</sup>* *A<sup>+</sup>* *B<sup>+</sup> D<sup>+</sup>*

*mf*

*ff*

Wind Chimes

a Pand.

I

♩=90    ♩=95    ♩=100

accel. . . . .

113

Fl. *pp* *p* *mf*

Cl. Sib *pp* *pp* *mp* *mp*

Fag. *pp*

Crn.

Tpt. en Sib

Tbn.

P. I.

P. II. *Gls*

P. III.

Ch.

P.V. *Vib*

Arpa *p* *L.V.*

Pno. *mp*

I

♩=90    ♩=95    ♩=100

accel. . . . .

Vln. *pizz.* *mf*

Vla.

Vc.

Cb.



119

Fl.

Cl. Sib

Fag.

Crn.

Tpt. en Sib

Tbn.

P. I.

P. II. *Gisp*

P. III.

Ch.

P.V. *Vib*

Arpa

Pno.

Vln.

Vla.

Vc.

Cb.

This page of a musical score, numbered 122, contains staves for various instruments. The woodwind section includes Flute (Fl.), Clarinet in B-flat (Cl. Sib.), Bassoon (Fag.), Cor Anglais (Cra.), Trumpet in B-flat (Tpt. en Sib.), and Trombone (Tbn.). The brass section includes Percussion I (P. I.), Percussion II (P. II.) with a Glissando (Glisp) effect, Percussion III (P. III.), and Vibraphone (Vib). The string section includes Violin (Vln.), Viola (Vla.), Violoncello (Vc.), and Contrabasso (Cb.). The piano (Pno.) part is also present. The score is divided into four measures, with measure numbers 135, 140, and 145 indicated above the woodwind staves. Dynamic markings such as *pp*, *mf*, *f*, and *ff* are used throughout. The Flute and Clarinet parts feature melodic lines with slurs and accents, while the Bassoon and Trombone parts play sustained notes. The strings provide a rhythmic accompaniment with eighth-note patterns. The piano part features a complex texture with triplets and chords. The Percussion II and Vibraphone parts have specific effects and rhythmic patterns. The overall tempo and dynamics are indicated by the markings above the woodwind staves.

♩=160

127

Fl. *f* *ff*

Cl. Sib *f* *ff*

Fag. *ff* *fff*

Crn. *f* *ff*

Tpt. en Sib *mf* *ff*

Tbn. *f* *ff*

P. I.

P. II. *Gisp*

P. III.

Ch.

P. V. *Vib*

Arpa

Pno. *f* *ff*

Vln. *ff*

Vla. *ff*

Vc. *ff*

Cb. *ff*

♩=160

Detailed description: This page of a musical score covers measures 127 to 130. The woodwind section includes Flute (Fl.), Clarinet in B-flat (Cl. Sib), Bassoon (Fag.), and Cor Anglais (Crn.). The brass section includes Trumpet in B-flat (Tpt. en Sib) and Trombone (Tbn.). Percussion includes P. I., P. II. (with Gong), P. III., Chimes (Ch.), and Vibraphone (P. V. with Vib). The string section includes Violin (Vln.), Viola (Vla.), Violoncello (Vc.), and Contrabass (Cb.). The piano (Pno.) part features a complex accompaniment with triplets in the left hand and chords in the right hand. Dynamics range from *mf* to *fff*. A tempo marking of ♩=160 is present at the top and bottom of the page.



# Enredaderas

Escena VII

♩=80

Flauta

Clarinete en Sib

Fagot

Corno en Fa

Trompeta en Sib

Trombón

Perc. I Par de 20"

Perc. II Glockenspiel Glsp

Perc. III Bouteilophone

Perc. IV Pandereta

Perc. V Vibráfono Vib

Arpa

Piano

Violin

Viola

Violonchelo

Contrabajo

*p*

*mp*

*mf*

*f*

*pizz.*

*E♭ F# B♭*

7

Fl. *mf*

Cl. Sib

Fag. *mf*

Crn.

Tpt. en Sib

Tbn. *f*

P. I

P. II *Glsp*

P. III

P. IV

P. V *Vib*

Arpa

Pno.

Vln. *f* *arco*

Vla.

Vc.

Cb.

Detailed description: This page of a musical score, numbered 126, contains 14 staves. The instruments are: Flute (Fl.), Clarinet in B-flat (Cl. Sib), Bassoon (Fag.), Horn in C (Crn.), Trumpet in B-flat (Tpt. en Sib), Trombone (Tbn.), Percussion I (P. I), Percussion II (P. II) with Gong (Glsp), Percussion III (P. III), Percussion IV (P. IV), Percussion V (P. V) with Vibraphone (Vib), Harp (Arpa), Piano (Pno.), Violin (Vln.), Viola (Vla.), Violoncello (Vc.), and Contrabass (Cb.). The score is in 4/4 time. The Flute part begins with a *mf* dynamic and features a melodic line with slurs. The Clarinet and Bassoon parts have sparse entries. The Horns and Trombones play sustained notes and chords. The Percussion parts are mostly silent, with P. II marked *Glsp* and P. V marked *Vib*. The Piano part provides harmonic support with chords and a bass line. The Violin part has a *f* dynamic and includes the instruction *arco*. The Viola, Cello, and Contrabass parts provide a steady bass line.

11

Fl.

Cl. Sib

Fag.

Crn.

Tpt. en Sib

Tbn.

P. I

P. II *Gisp*

P. III

P. IV

P. V *Vib*

Arpa

Pno.

Vln.

Vla. *pizz.*

Vc.

Cb.

*f mp f p f*

*f mp f mf mp mf*

*f mp f p f*

*mp*

*mp*

*mp*

*mp*

*mp*

*mp*

*mp f p mp f p mf*

*pizz. arco f*

15

Fl.

Cl. Sib

Fag.

Crn.

Tpt. en Sib

Tbn.

P. I

P. II

P. III

P. IV

P. V

Arpa

Pno.

Vln.

Vla.

Vc.

Cb.

*mf* *f* *mp* *p*

*f* *p* *mf* *f* *mf* *ff*

*mf* *f* *mf* *p*

*mp* *mf* *mp* *mf*

*mp* *mf* *mp* *mf*

*mp* *mf* *mp* *mf*

*mf*

*mp*

*Vib*

*mf*

*C# E#*

*p* *mf* *p* *mf* *f* *p*

*p* *f* *p* *f* *p*



A

19

Fl. *mp* *pp* *p*

Cl. Sib *mp* *pp* *mf*

Fag.

Crn. *mp* *ppp*

Tpt. en Sib *pp* *mp* *ppp*

Tbn. *mp* *ppp*

P. I

P. II *Glsp*

P. III

P. IV

P. V *Vib* *p* *f* *pp*

Arpa *mp* *mp*

Pno. *f*

A

Vln. *pizz.* *mf*

Vla. *pizz.* *mf*

Vc.

Cb.

21

Fl. *mf* *f* *mf* *pp* *mp* *f* *p* *mf*

Cl. Sib *mp* *mf* *p* *mf* *p* *mp*

Fag. *mp*

Crn. *mp* *mf*

Tpt. en Sib *p* *mf* *pp*

Tbn. *mp*

P. I

P. II *Glsp*

P. III

P. IV

P. V *Vib* *mp* *f*

Arpa *f* *mf* *mp* *L.V.* *L.V.*

G# C#

G# C#

Pno.

Vln. *pizz.* *mp* *p* *mf* *arco ord.*

Vla. *arco* *p*

Vc. *mp* *p* *arco espressivo* *f*

Cb.

25

Fl. *p mp*

Cl. Sib

Fag. *p f mp*

Crn.

Tpt. en Sib

Tbn. *gliss.*

P. I

P. II *Glsp*

P. III

P. IV

P. V *Vib mf*

Arpa *f mf*

Pno. *mf*

Vln. *pp*

Vla. *ord. pp*

Vc.

Cb.

*f* *mf* *pp* *gliss.* *Vib* *ord.*

*F# C# G# a B# C# Eb F# G#*

29

Fl.

Cl. Sib

Fag.

Crn.

Tpt. en Sib

Tbn.

P. I

P. II *Glsp*

P. III

P. IV

P. V *Vib*

Arpa

Pno.

Vln. *→ sul pont.*

Vla. *→ sul pont.*

Vc.

Cb.

*f* *mf* *p* *mp* *pp* *ord.*

33

Fl. *mf* *f* *mp* *f*

Cl. Sib *f* *mp* *f*

Fag. *mp* *f* *mp* *f*

Crn. *rf* *rf*

Tpt. en Sib *ppp*

Tbn. *f* *mp* *f*

P. I.

P. II. Glsp

P. III.

P. IV.

P. V. Vib

Arpa *f* *a A#*

Pno.

Vln. *f*

Vla. *mp* *f*

Vc. pizz. arco *rf* pizz. arco *rf*

Cb.

35

Fl.

Cl. Sib

Fag.

Crn.

Tpt. en Sib

Tbn.

P. I

P. II

P. III

P. IV

P. V

Arpa

Pno.

Vln.

Vla.

Vc.

Cb.

*p* *f* *mf*

*mf* *mp* *f* *p*

*p* *f* *mf*

*mf* *mf* *mp* *mf*

*mf* *p* *mp* *mf*

Gisp

Vib

*mf*

*mf* *A<sup>2</sup>* *E<sup>2</sup> F<sup>2</sup>* *C<sup>2</sup>* *a B<sup>2</sup>*

*mp* *f* *p* *mp* *f* *p* *mf* *f* *p*

*mf* *mp* *f* *p* *mf* *f* *p*

pizz. arco *Bf* pizz. arco *Bf* pizz. arco *Bf* pizz. arco *Bf*

39

Fl. *f* *p*

Cl. Sib *mf* *f* *mf* *f* *p* *mf* *ff*

Fag. *f* *mf* *p*

Crn. *mp* *mf*

Tpt. en Sib *mp* *mf*

Tbn. *mp* *mf*

P. I

P. II *Glsp*

P. III *p*

P. IV

P. V *Vib*

Arpa *B<sub>n</sub>*

Pno. *5* *6* *6* *7* *3*

Vln. *3*

Vla. *mf* *f* *pp*

Vc. *pizz.* *arco* *pp* *pizz.* *arco* *pp*

Cb.

**B**

41

Fl. *mf* *p* *mf*

Cl. Sib *mf*

Fag. *mf* *p* *mp*

Crn. *p* *mp*

Tpt. en Sib *pp* *p* *mp*

Tbn. *p* *mp*

P. I

P. II *Glsp* L.V. a Tri.

P. III L.V. a J.B.

P. IV

P. V *Vib* *p*

Arpa

*A# B# C# Eb*

Pno.

**B**

Vln. *mf*

Vla. *pizz.* *arco* *p*

Vc. *pizz.*

Cb.



45

Fl.

Cl. Sib

Fag.

Crn.

Tpt. en Sib

Tbn.

P. I

Triángulo

P. II

Jam Blocks

P. III

P. IV

Vib

P. V

Arpa

Pno.

Vln.

Vla.

Vc.

Cb.

accel.

47

Fl.

Cl. Sib.

Fag.

Crn.

Tpt. en Sib.

Tbn.

P. I. *mf* L.V. a Plat.

P. II.

P. III. *p* a Mrcs.

P. IV. *mf* *pp*

P. V. **Vib**

Arpa *f*

Pno.

Detailed description: This block contains the musical score for measures 47 through 50. It includes staves for Flute (Fl.), Clarinet in B-flat (Cl. Sib.), Bassoon (Fag.), Cor Anglais (Crn.), Trumpet in B-flat (Tpt. en Sib.), Trombone (Tbn.), Percussion I (P. I.), Percussion II (P. II.), Percussion III (P. III.), Percussion IV (P. IV.), Vibraphone (P. V.), Harp (Arpa), and Piano (Pno.). The score features various musical notations such as triplets, slurs, and dynamic markings like *mf*, *p*, *f*, and *pp*. Performance instructions include 'L.V.' (Larghetto) and 'a Plat.' (Alto). A 'C' time signature change is indicated at the end of measure 50.

accel.

Vln.

Vla. *f*

Vc.

Cb.

Detailed description: This block contains the musical score for measures 51 through 54, featuring the string section: Violin (Vln.), Viola (Vla.), Violoncello (Vc.), and Contrabasso (Cb.). The score includes dynamic markings such as *f* and 'accel.' (accelerando). A 'C' time signature change is indicated at the end of measure 54.

51

Fl.

Cl. Sib

Fag.

Crn.

Tpt. en Sib

Tbn.

P. I.  
Platillos de 10"14"18"22"  
baqueta suave

P. II.

Mrcs.  
Maracas

P. IV.

P. V.  
Vib.

Arpa

Pno.

Vln.

Vla.

Vc.

Cb.

*f*

*mp*

*f*

*p*

*mf*

*f*

*pp*

*mf*

*f*

*pp*

*mf*

*f*

*mf*

*f*

*pp*

L.V.

a J.B.

*B<sup>+</sup> A<sup>+</sup> A<sup>b</sup> B<sup>b</sup>*

$\text{♩} = 120$

*molto accel.*

53

Fl.

Cl. Sib

Fag.

Crn.

Tpt. en Sib

Tbn.

P. I.

P. II.

P. III.

P. IV.

P. V.

Arpa

Pno.

Vln.

Vla.

Vc.

Cb.

*mp*

*p*

*mf*

*mf*

*Vib*

*D<sub>b</sub>*

*C<sub>3</sub>*

*a E<sub>b</sub>*

$\text{♩} = 120$

*molto accel.*

55

Fl. *f*

Cl. Sib

Fag.

Crn. *p* *ff* *pp* *ff*

Tpt. en Sib *p* *ff* *pp* *ff*

Tbn. *mf* *pp* *ff*

P. I. *p* *ff* *pp* *ff* L.V.

P. II.

P. III.

P. IV.

P. V. *mf*

Arpa *E<sub>b</sub>* *F<sup>#</sup>*

Pno. *f*

Vln. *ff*

Vla. *ff*

Vc. arco

Cb. *ff* arco

57

Fl.

Cl. Sib

Fag.

Crn.

Tpt. en Sib

Tbn.

P. I.

P. II.

P. III.

P. IV.

Vib

P. V.

Arpa

Pno.

Vln.

Vla.

Vc.

Cb.

*ff*

*p*

*f*

*mf*

*pizz.*

*a Mrcs.*

*a Ds*

D

♩ = 160

59

Fl. *ff* *mf*

Cl. Sib *ff* *mf*

Fag. *ff* *mf*

Crn. *ff* *mf*

Tpt. en Sib *ff* *mf*

Tbn. *ff* *mf*

P. I. *L.V.* a Par 20"

P. II.

P. III. *f*

P. IV. *f*

P. V. *Vib.* *mf*

Arpa *f* *D<sup>♯</sup>*

Pno.

D

♩ = 160

Vln. *p* *f*

Vla. *p* *f*

Vc. *arco* *p* *f*

Cb.

61

Fl. *f*

Cl. Sib *f*

Fag.

Crn.

Tpt. en Sib

Tbn.

P. I. *f* L.V. a Plat.

P. II.

P. III.

P. IV.

P.V. *f* *mf*

Arpa

Pno.

Vln. *p* *f* *p* *f*

Vla. *p* *f* *p* *f*

Vc. *p* *f* *p* *f*

Cb. arco



63

Fl. *mf* *tr*

Cl. Sib *mf*

Fag.

Crn. *p*

Tpt. en Sib *p*

Tbn. *p*

P. I. *mf* *f* *ff* *baqueta dura*

P. II. *mf* *a Glock.* *Gisp* *mp*

P. III.

P. IV. *mf*

P. V. *Vib*

Arpa

Pno. *D<sup>b</sup> F<sup>♯</sup>*

Vln. *f*

Vla. *f*

Vc. *3*

Cb. *3*

67

Fl.

Cl. Sib.

Fag.

Crn.

Tpt. en Sib.

Tbn.

P. I.

P. II.

P. III.

P. IV.

P. V.

Arpa

Pno.

Vln.

Vla.

Vc.

Cb.

*f*

*mf*

*ff*

*f* *pp* *f*

*mf* *f*

*mf*

*mf*

ord. L.V.

Gisp

a Tri.

a Glock.

Vib

*ff*

*ff*

*mf*

*ff*

E

71

Fl.

Cl. Sib

Fag.

Ctn.

Tpt. en Sib

Tbn.

P. I.

P. II.

P. III.

P. IV.

P. V.

Arpa

Pno.

Glisp

L.V.

*f*

*mp*

*ff*

*mf*

*f*

*gliss.*

*p*

*mp*

*ff*

*f*

*mp*

*f*

*Vib*

E

Vln.

Vla.

Vc.

Cb.

*mf*

*f*

*mf*

*mf*

*mf*

*ff*

*mp*

*gliss.*



74

Fl.

Cl. Sib

Fag.

Crn.

Tpt. en Sib

Tbn.

P. I.

P. II.

P. III.

P. IV.

P. V.

Arpa

Pno.

Vln.

Vla.

Vc.

Cb.

*fp fp p f p f fff p*

*fp f p f f p f fff p*

*mp f fff p*

*fp p f f p f fff p*

*L.V. L.V. L.V. fff*

*Gisp 3 3 f*

*ff pp*

*Wind Chimes p f p*

*Vib*

*ff ff*

*mf arco sul pont. arco sul pont. mf*

*pizz. pizz. pizz.*

*L.V. L.V. L.V. L.V.*

77

Fl. *p* *mf* *f*

Cl. Sib

Fag. *mf* *p*

Crn. *mf* *p*

Tpt. en Sib *mf*

Tbn. *mf* *p*

P. I. *f* *fff*

P. II. Glisp

P. III. *f* L.V.

P. IV.

P. V. Vib *mp*

Arpa

Pno. L.V. L.V.

Vln. *gliss.* *mf*

Vla. *gliss.* *mf*

Vc. L.V. arco ord. *gliss.* *f*

Cb.

79

Fl.

Cl. Sib

Fag.

Crn.

Tpt. en Sib

Tbn.

P. I.

P. II. Glisp

P. III.

Pdta.

P.V. Vib

Arpa

Pno.

Vln.

Vla.

Vc.

Cb.

arco ord.

*ppp* *fff* *mf* *ff* *p* *pp* *fff* *f* *mp* *f* *ff* *f* *fff* *fff* *fff* *fff* *f* *gliss.* *gliss.* *gliss.* *mp* *ff*

L.V. 15<sup>mo</sup>

sul pont.

81

Fl. *ff*

Cl. Sib *ff* *fff*

Fag. *ff* *fff*

Crn. *mf* *p* *fff*

Tpt. en Sib *mf* *fff*

Tbn. *mf* *fff*

P. I. *ff* L.V. *silencio absoluto*

P. II. *ff*

P. III. L.V.

Pdta.

P. V. *Vib* *s* L.V. *silencio absoluto*

Arpa L.V. *silencio absoluto*

Pno.

Vln. *ff* *fff*

Vla. *ff* *fff*

Vc. *ff* *fff*

Cb. *fff*