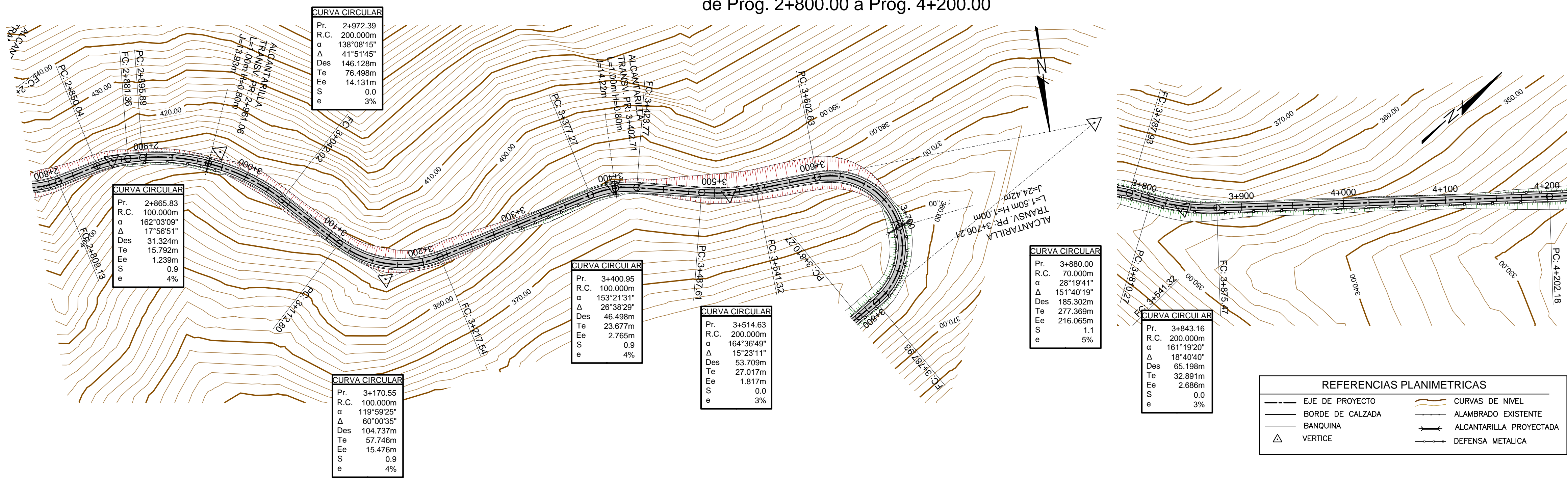
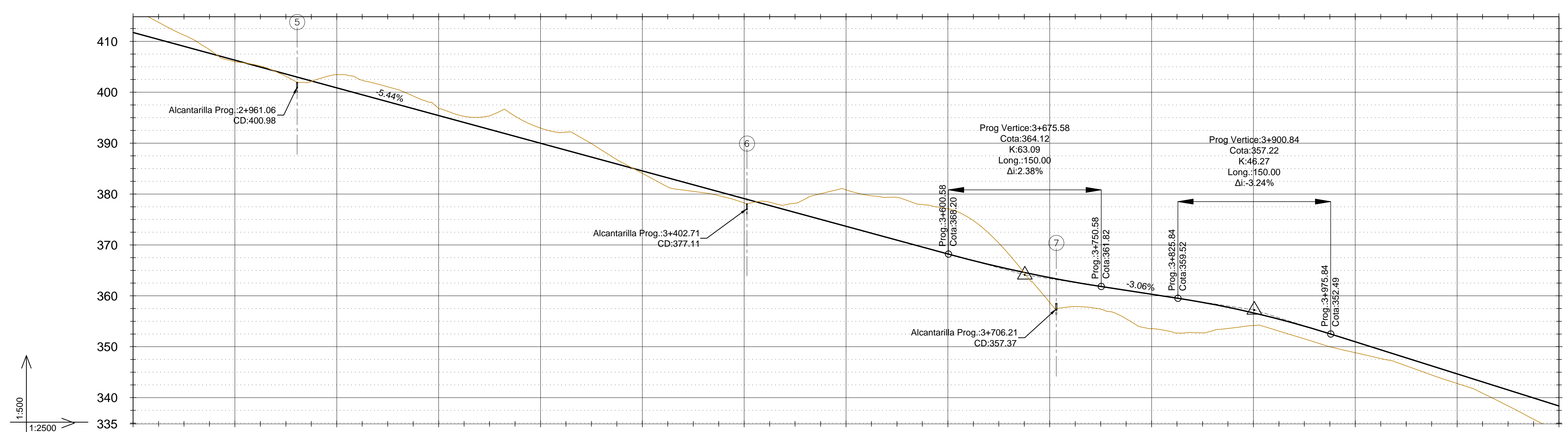


PLANIMETRIA de Prog. 2+800.00 a Prog. 4+200.00



ALTIMETRIA de Prog. 2+800.00 a Prog. 4+200.00



PROGRESIVA	RASANTE	TERRENO	DIFERENCIA	PERALTE
2+800	411.75	416.56	-4.82	
2+825	410.39	413.74	-3.35	
2+850	409.03	411.22	-2.19	
2+875	407.67	408.37	-0.69	
2+900	406.31	405.98	0.33	
2+925	404.95	405.16	-0.21	
2+950	403.59	403.13	0.47	
2+975	402.23	402.13	0.11	
3+000	400.87	403.44	-2.57	
3+025	399.51	402.33	-2.82	
3+050	398.15	401.07	-2.92	
3+075	396.79	399.27	-2.47	
3+100	395.43	396.81	-1.38	
3+125	394.07	395.27	-1.20	
3+150	392.71	395.36	-2.65	
3+175	391.35	395.31	-3.96	
3+200	389.99	392.96	-2.97	
3+225	388.63	392.17	-3.54	
3+250	387.27	389.92	-2.65	
3+275	385.91	386.76	-0.85	
3+300	384.55	384.06	0.49	
3+325	383.19	381.40	1.79	
3+350	381.83	380.52	1.31	
3+375	380.47	379.68	0.79	
3+400	379.11	378.25	0.86	
3+425	377.75	376.40	-0.65	
3+450	376.39	374.19	-1.80	
3+475	375.03	380.06	-5.03	
3+500	373.67	380.84	-7.17	
3+525	372.31	379.66	-7.35	
3+550	370.95	379.34	-8.39	
3+575	369.59	377.93	-8.34	
3+600	368.23	377.12	-8.89	
3+625	366.87	374.77	-7.96	
3+650	365.51	370.36	-4.66	
3+675	364.15	364.50	0.09	
3+700	362.79	358.69	-5.88	
3+725	361.43	357.91	-3.52	
3+750	360.07	357.41	-2.66	
3+775	358.71	355.50	-3.21	
3+800	357.35	353.55	-3.80	
3+825	355.99	352.69	-3.30	
3+850	354.63	352.72	-1.91	
3+875	353.27	353.68	-0.41	
3+900	351.91	354.17	-2.26	
3+925	350.55	353.07	-2.52	
3+950	349.19	351.56	-2.37	
3+975	347.83	349.99	-2.16	
4+000	346.47	348.82	-2.35	
4+025	345.11	347.67	-2.56	
4+050	343.75	346.25	-2.50	
4+075	342.39	344.46	-2.07	
4+100	341.03	342.79	-1.76	
4+125	339.67	340.86	-1.19	
4+150	338.31	338.37	-0.06	
4+175	336.95	335.76	-1.19	
4+200	335.59	333.11	-2.48	



NOTAS

REFERENCIAS PLANIMETRICAS

- EJE DE PROYECTO
- BORDE DE CALZADA
- BANQUINA
- VERTICE
- CURVAS DE NIVEL
- ALAMBRADO EXISTENTE
- ALCANTARILLA PROYECTADA
- DEFENSA METALICA

PLANOS DE REFERENCIA

NK-C.TP-PL-VC-(CA-02-00)-P001 PLANIMETRIA GENERAL
 NK-C.TP-PL-VC-(CA-02-00)-P002 PLANO TIPO Y ESTRUCTURAL
 NK-C.TP-PL-VC-(CA-02-00)-P012 a P016 PERFILES TRANSVERSALES

NOTAS INSPECCION

OR	OD	OC	OB	OA	REVISIONES
				EMISION ORIGINAL	06-11-15 MLU MLU GPR GPR

MINISTERIO DE PLANIFICACION FEDERAL, INVERSION PUBLICA Y SERVICIOS
 SECRETARIA DE OBRAS PUBLICAS
 SUBSECRETARIA DE RECURSOS HIDRICOS

APROVECHAMIENTOS HIDROELECTRICOS DEL RIO SANTA CRUZ
 Pte. Dr. Néstor Carlos KIRCHNER y Gob. Jorge CEPERNIC

REPRESA Pte. Dr. NÉSTOR KIRCHNER
 OBRAS TEMPORARIAS - CAMINOS DE ACC.A OBRAS Y VILLA
 MARGEN DERECHA - GENERAL
 VALIADIDAD Y CAMINOS

FORM: A1 HOJA: 1/1 ESCALA: INDIC. PLANO: NK-C.TP-PL-VC-(CA-02-00)-P005 REV: 0A