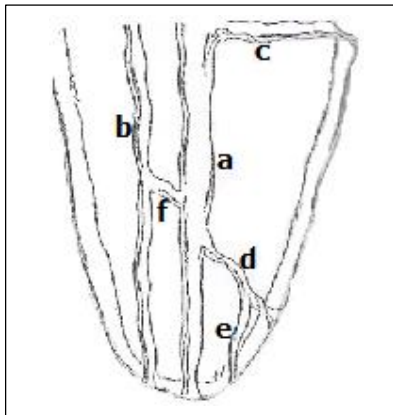

**ACTIVIDADES
TEÓRICO-PRÁCTICAS
OBLIGATORIAS**

SISTEMA DE CONDUCTOS

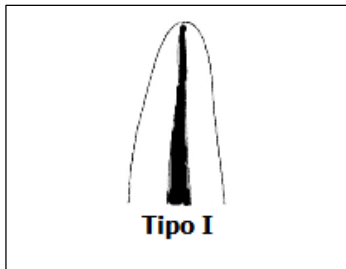


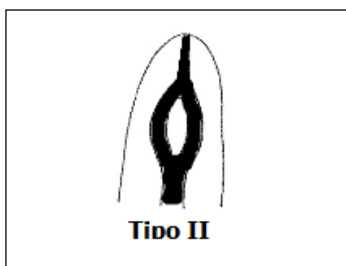
a-----
 b-----
 c-----
 d-----
 e-----
 f-----



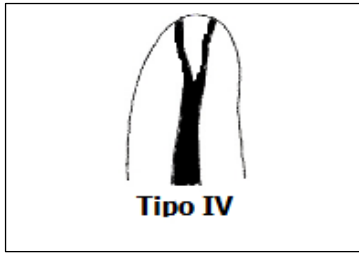


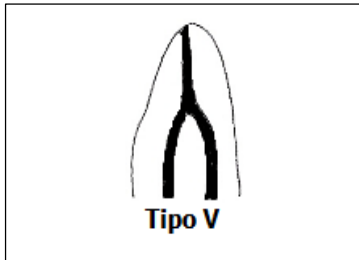
NÚMERO DE CONDUCTOS POR RAÍZ

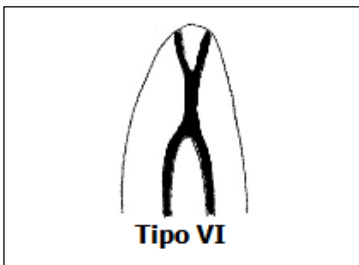




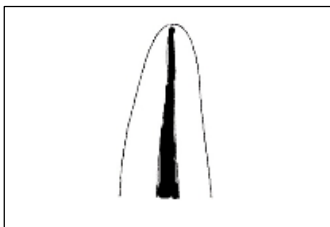




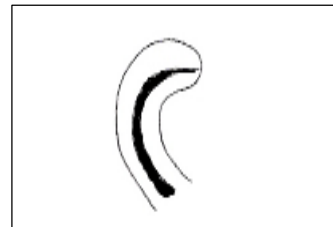


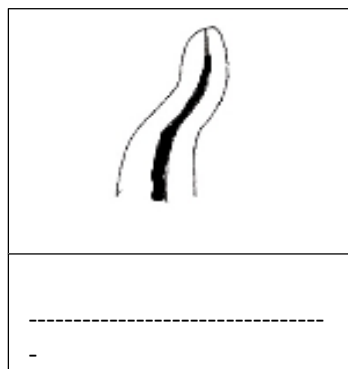


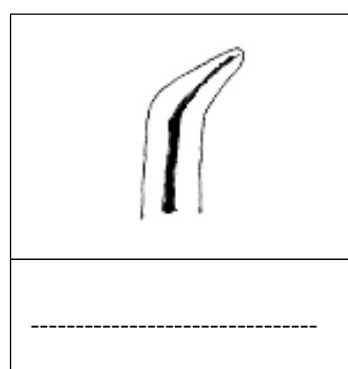
DIRECCIÓN DE LOS CONDUCTOS









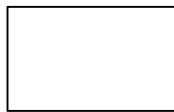


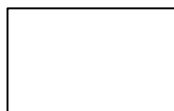
FORMAS DE LOS CONDUCTOS EN SU SECCIÓN TRANSVERSAL

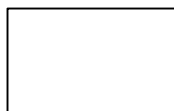




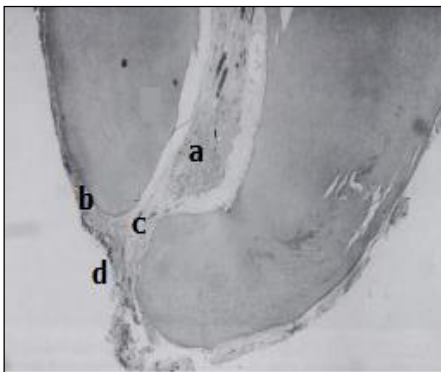








ÁPICE RADICULAR

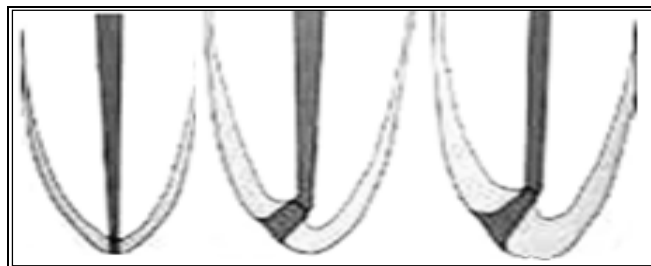


a-----

b-----

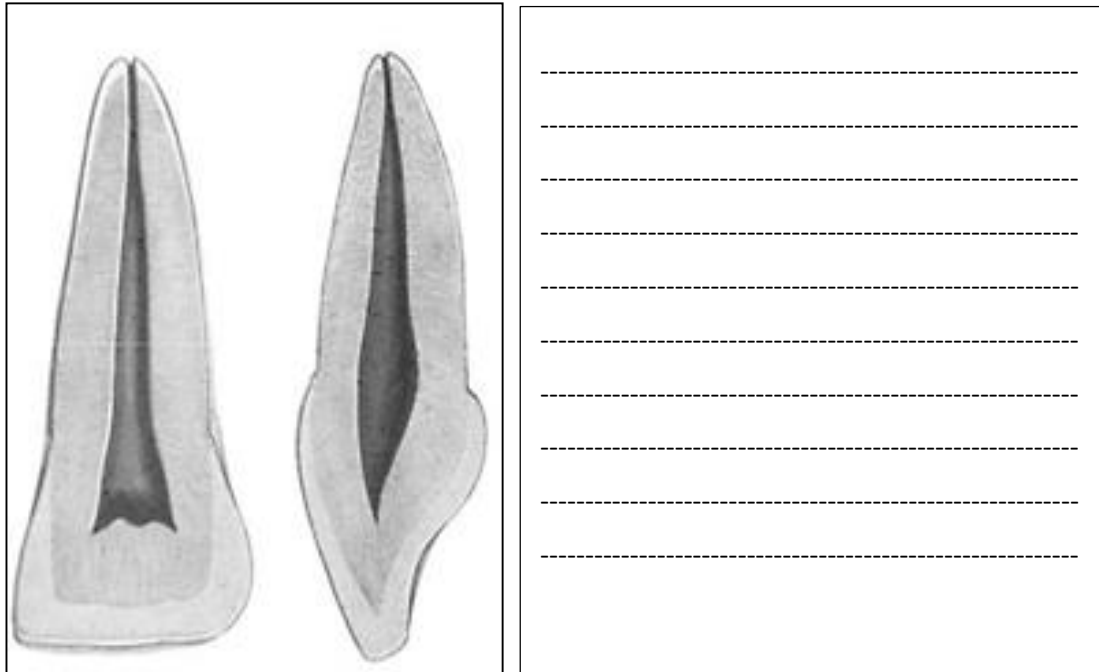
c-----

d-----



INCISIVOS SUPERIORES

VISTA

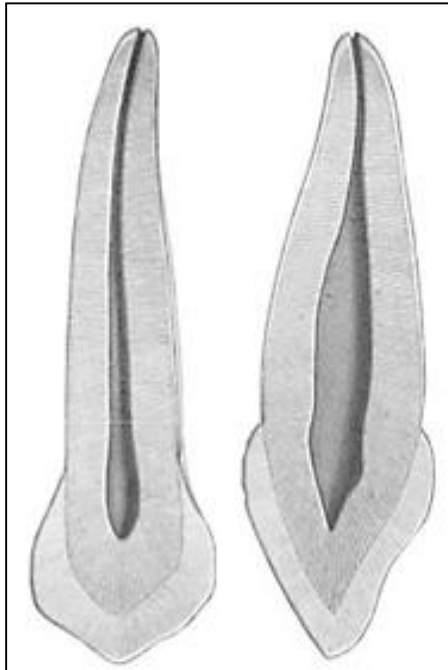


CORTES TRANSVERSAL

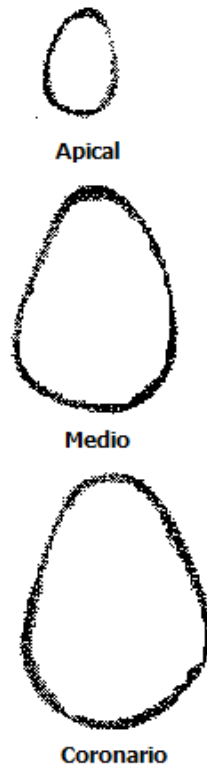


CANINO SUPERIOR

VISTA

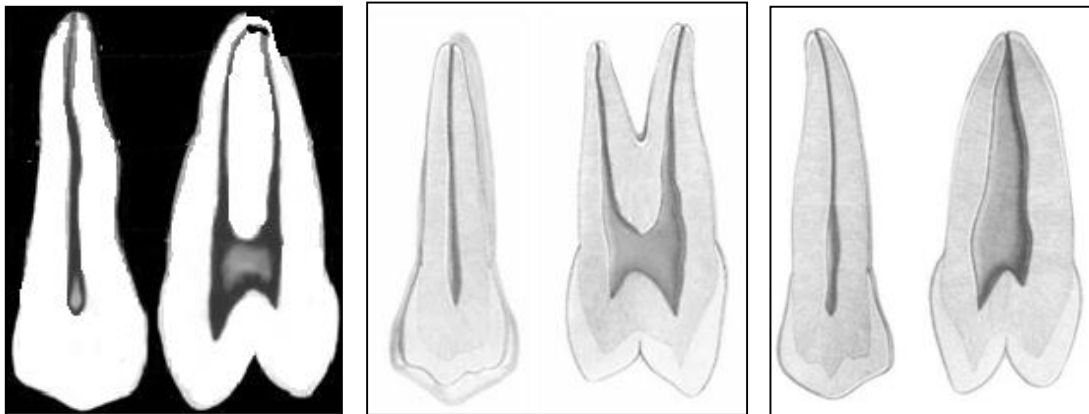


CORTE TRANSVERSAL

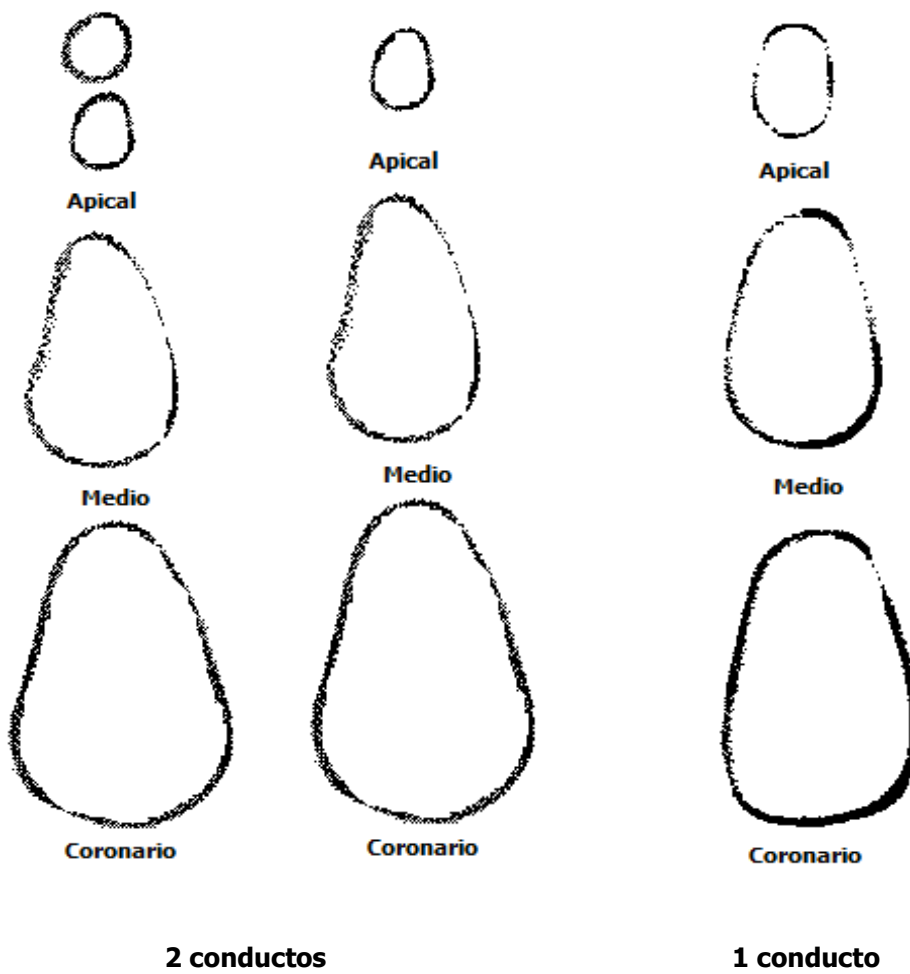


PREMOLARES SUPERIORES

VISTA

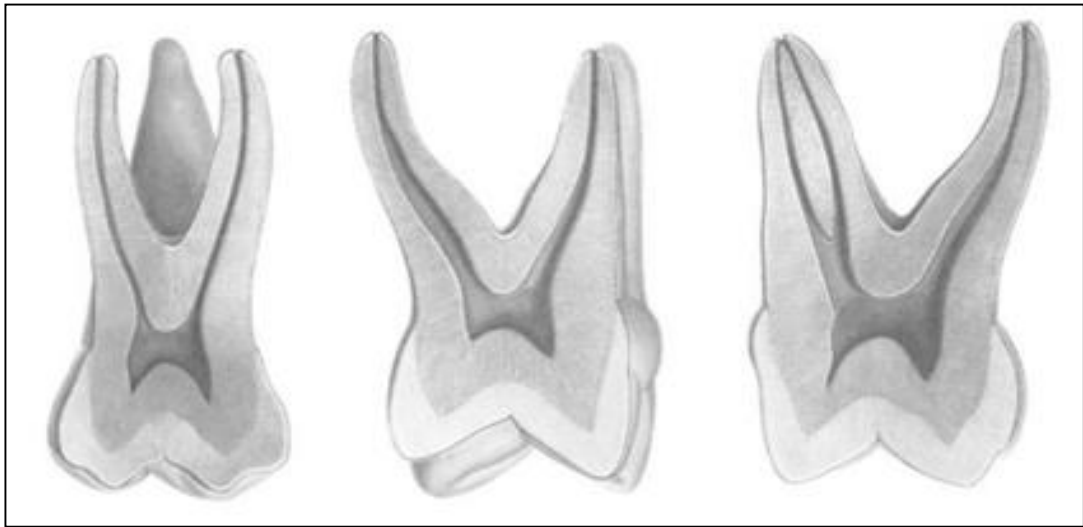


CORTES TRANSVERSALES

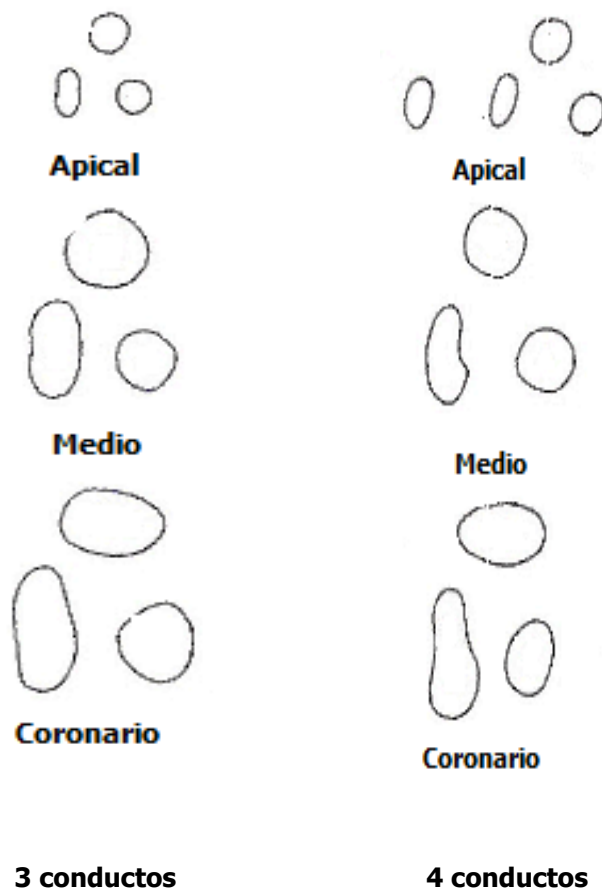


PRIMER MOLAR SUPERIOR

VISTA

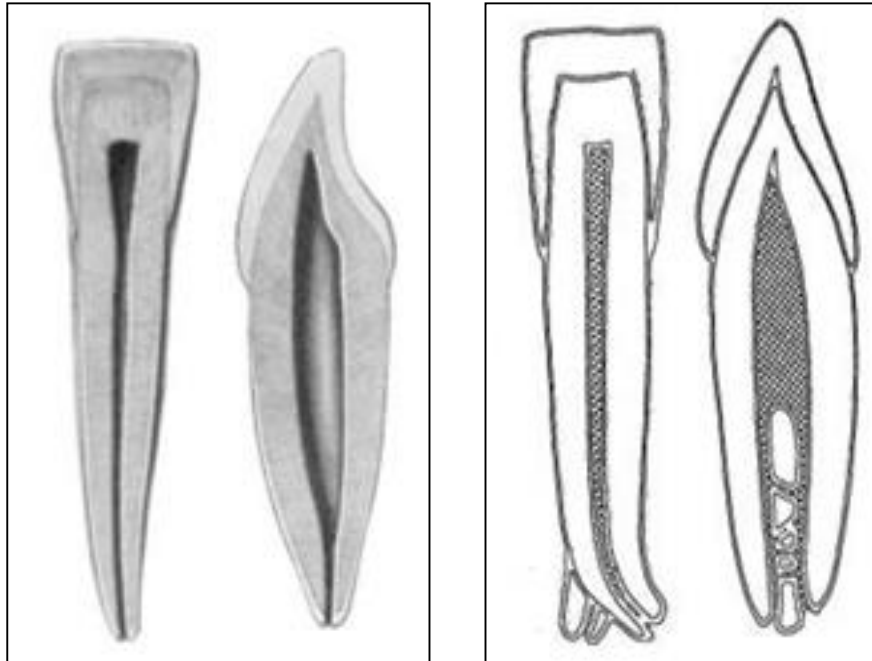


CORTES TRANSVERSALES



INCISIVOS INFERIORES

VISTA



CORTES TRANSVERSALES



Coronario



Coronario



Medio



Medio



Apical

1 conducto

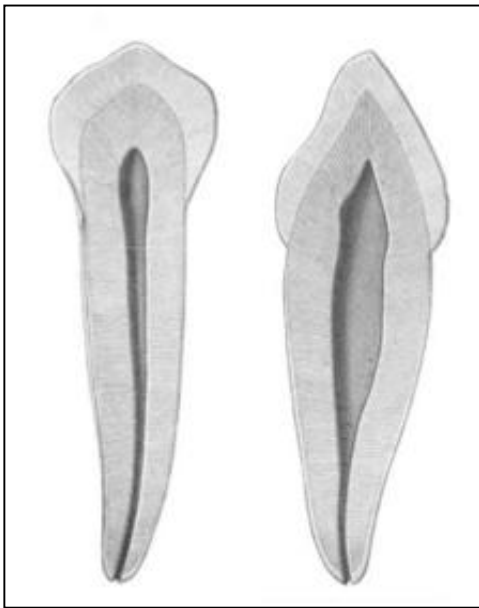


Apical

2 conductos

CANINO INFERIOR

VISTA



CORTES TRANSVERSALES



Coronario



Medio



Apical

1 conducto



Coronario



Medio

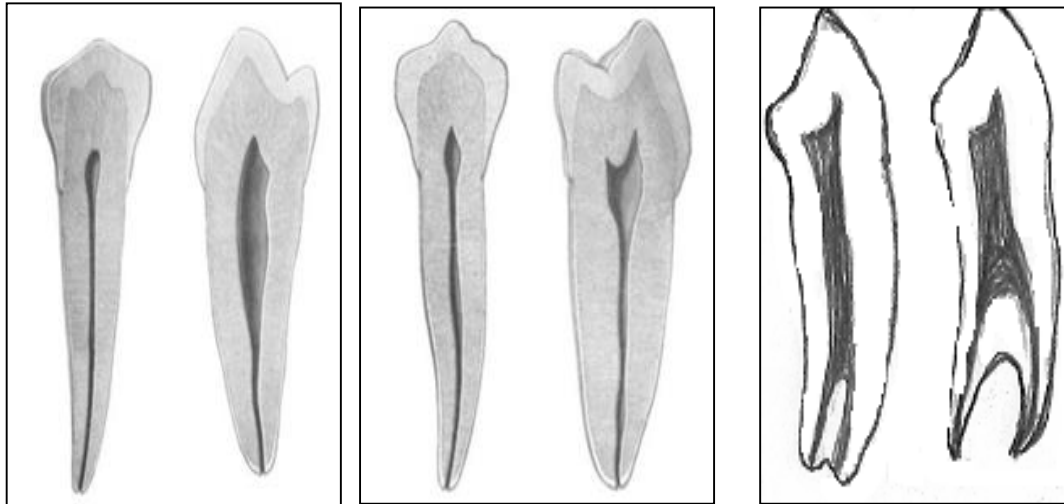


Apical

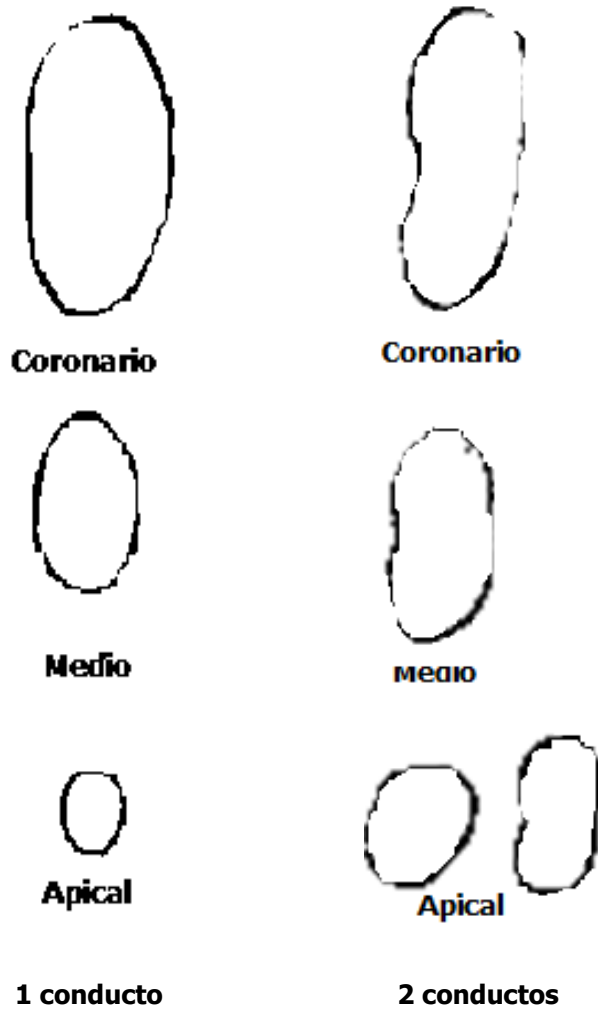
2 conductos

PREMOLARES INFERIORES

VISTA

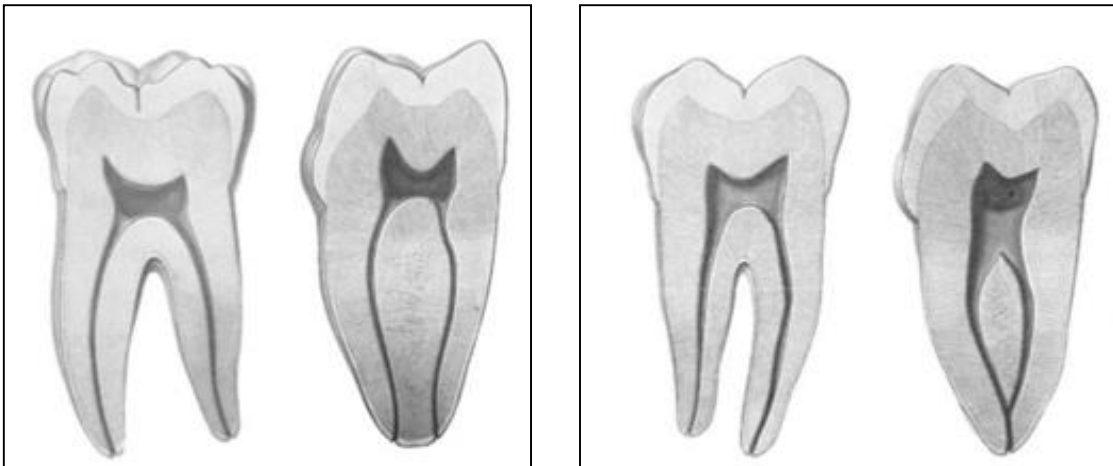


CORTES TRANSVERSALES

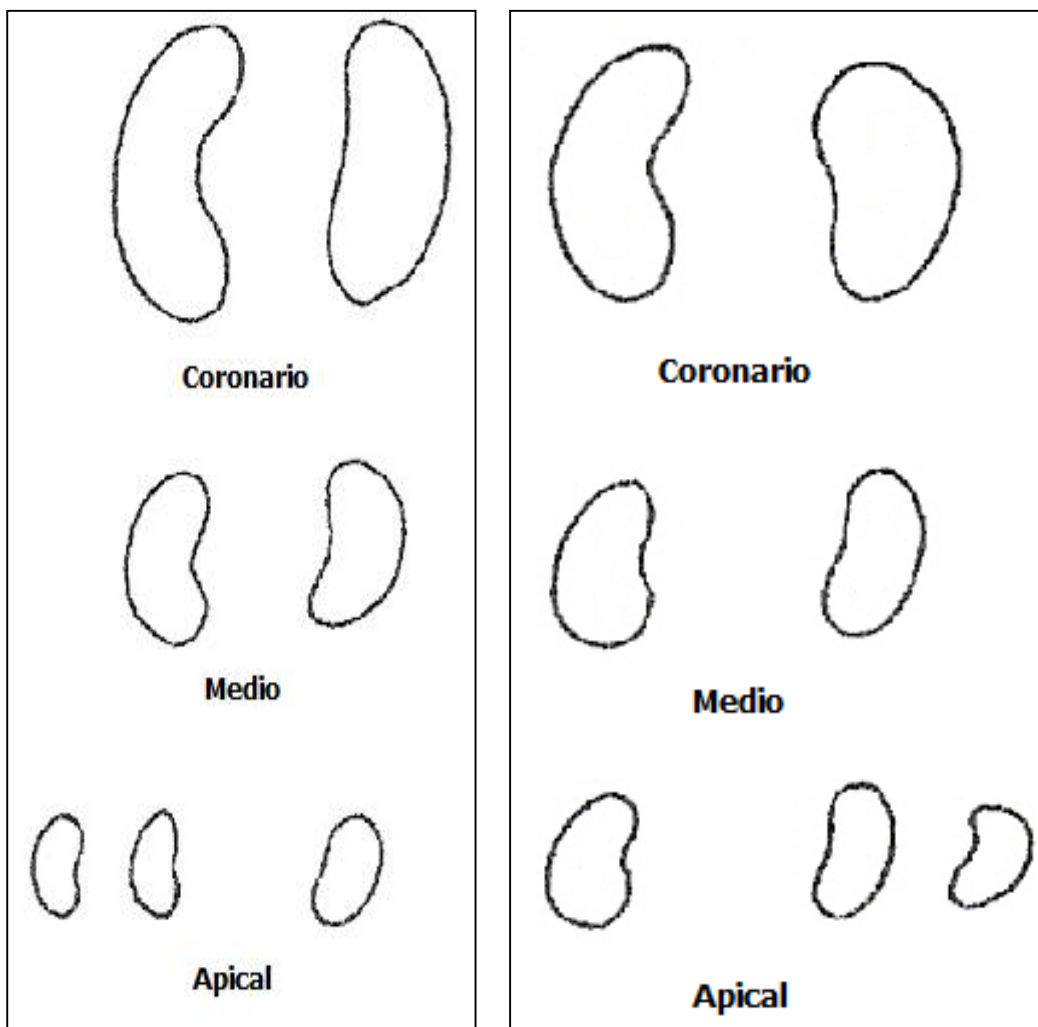


MOLARES INFERIORES

VISTA



CORTES TRANSVERSALES



3 conductos

4 conductos

