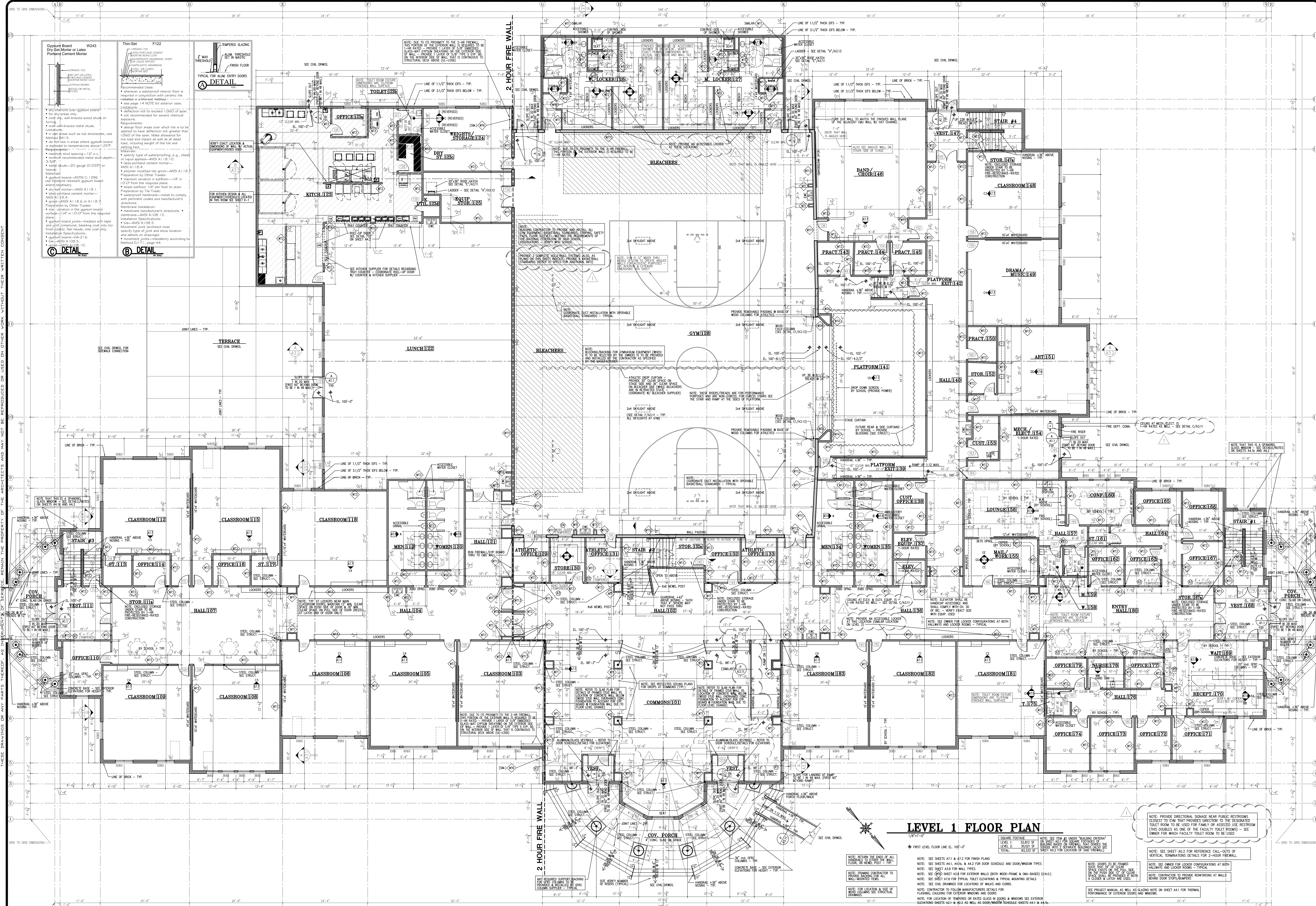


Anexo 1

Planos Arquitectónicos



LEVEL 1 FLOOR PLAN

1/8"=1'-0"

◆ FIRST LEVEL FLOOR LINE EL. 100'-0"

SQUARE FOOTAGE	NOTE: SEE ITEM #2 UNDER "BUILDING OVERLAY"
LEVEL 1	ON SHEET A41 FOR SQUARE FOOTINGS
LEVEL 2	ON SHEET A42 FOR SQUARE FOOTINGS
TOTAL	SEE SHEET A42 FOR LOCATION OF S&P DETAILS

- NOTE: WITHIN THE ENDS OF ALL FLOOR OR WALL POSTS TO TYP.
- NOTE: PROVIDE FRAMING CONTRACTOR TO PROVIDE BRACING FOR ALL WALL-MOUNTED ITEMS.
- NOTE: REFER TO CIVIL DRAWINGS FOR LOCATION OF WALLS AND CURBS.
- NOTE: CONTRACTOR TO FOLLOW MANUFACTURER'S DETAILS FOR FLASHING, CALLINGS FOR EXTERIOR WINDOWS AND DOORS.
- NOTE: FOR LOCATION OF THERMO-OR RATED GLASS IN DOORS & WINDOWS SEE EXTERIOR ELEVATIONS SHEETS A21 & A22 AS WELL AS DOOR/WINDOW SCHEDULE SHEETS A41 & A42.
- NOTE: SEE SHEETS A71 & A72 FOR FINISH PLANS.
- NOTE: SEE SHEETS A41, A42, & A42 FOR DOOR SCHEDULE AND DOOR/WINDOW TYPES.
- NOTE: SEE SHEET A33 FOR WALL TYPES.
- NOTE: SEE SHEET A34 FOR TYPICAL TOILET ELEVATIONS & TYPICAL MOUNTING DETAILS.
- NOTE: SEE CIVIL DRAWINGS FOR LOCATIONS OF WALLS AND CURBS.
- NOTE: CONTRACTOR TO FOLLOW MANUFACTURER'S DETAILS FOR FLASHING, CALLINGS FOR EXTERIOR WINDOWS AND DOORS.
- NOTE: FOR LOCATION OF THERMO-OR RATED GLASS IN DOORS & WINDOWS SEE EXTERIOR ELEVATIONS SHEETS A21 & A22 AS WELL AS DOOR/WINDOW SCHEDULE SHEETS A41 & A42.
- NOTE: SEE SHEET A42 FOR REFERENCE CALL-OUTS OF VERTICAL TERMINATIONS DETAILS FOR 2-HOUR FIREWALL.
- NOTE: SEE SHEET A33 FOR DOOR CONFIGURATIONS AT BOTH HALLWAYS AND LOCKER ROOMS.
- NOTE: CONTRACTOR TO PROVIDE CONFINEMENTS AT WALLS BEHIND DOOR STOPS/BUMPERS.
- NOTE: PROVIDE DIRECTIONAL SIGNAGE NEAR PUBLIC RESTROOMS CLOSEST TO CURB THAT PROVIDES DIRECTION TO THE DESIGNATED TOILET ROOM TO BE USED FOR FAMILY OR ASSOCIATED USE RESTROOM (THIS DOUBLES AS ONE OF THE FACULTY TOILET ROOMS) - SEE OWNER FOR WHICH FACULTY TOILET ROOM TO BE USED.

REVISIONS	DATE	DESCRIPTION
1	09/17/13	



PROVIDENCE HALL HIGH SCHOOL
 HERRIMAN
LEVEL 1 FLOOR PLAN
 UTAH

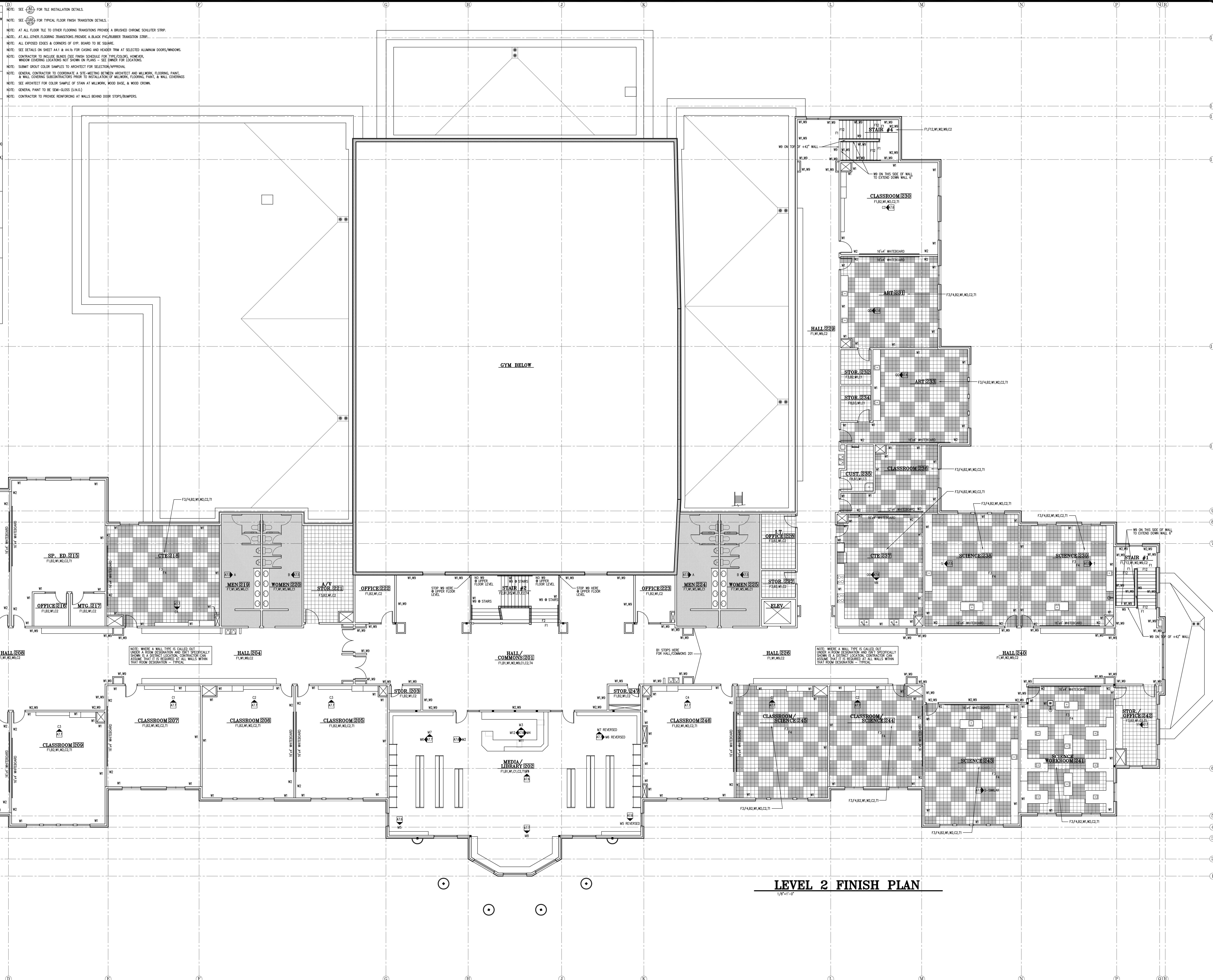
PERMIT SET #2: 09-17-13

DRAWN KWH	SHEET A1.1
CHECKED BY KBH	
DATE SEPTEMBER 2013	
SCALE	

THESE DRAWINGS OR ANY PARTS THEREOF, AS INSTRUMENTS OF SERVICE, REMAIN THE PROPERTY OF THE ARCHITECTS AND MAY NOT BE REPRODUCED OR USED IN OTHER WORK WITHOUT THEIR WRITTEN CONSENT.

36"x48" sheets are full size drawings -- 18"x24" sheets are half size drawings.

INTERIOR FINISH SCHEDULE	
F1 CARPET TILE	1/2" x 1/2" VINYL COMPOSITE TILE
F2 CARPET (WALLBOARD)	1/2" x 1/2" VINYL COMPOSITE TILE
F3 VCT 2	1/2" x 1/2" VINYL COMPOSITE TILE
F4 VCT 3	1/2" x 1/2" VINYL COMPOSITE TILE
F5 FLOOR TILE 1	1/2" x 1/2" VINYL COMPOSITE TILE
F6 FLOOR TILE 2	1/2" x 1/2" VINYL COMPOSITE TILE
F7 FLOOR TILE 3	1/2" x 1/2" VINYL COMPOSITE TILE
F8 MARBLE ON FLOOR	1/2" x 1/2" VINYL COMPOSITE TILE
F9 BERRY BAIT	1/2" x 1/2" VINYL COMPOSITE TILE
F10 BERRY BAIT	1/2" x 1/2" VINYL COMPOSITE TILE
F11 BERRY BAIT	1/2" x 1/2" VINYL COMPOSITE TILE
F12 BERRY BAIT	1/2" x 1/2" VINYL COMPOSITE TILE
F13 BERRY BAIT	1/2" x 1/2" VINYL COMPOSITE TILE
F14 BERRY BAIT	1/2" x 1/2" VINYL COMPOSITE TILE
F15 BERRY BAIT	1/2" x 1/2" VINYL COMPOSITE TILE
B1 1/2" WOOD BASE	1/2" x 1/2" VINYL COMPOSITE TILE
B2 1/2" WOOD BASE	1/2" x 1/2" VINYL COMPOSITE TILE
B3 1/2" WOOD BASE	1/2" x 1/2" VINYL COMPOSITE TILE
B4 1/2" WOOD BASE	1/2" x 1/2" VINYL COMPOSITE TILE
B5 1/2" WOOD BASE	1/2" x 1/2" VINYL COMPOSITE TILE
B6 1/2" WOOD BASE	1/2" x 1/2" VINYL COMPOSITE TILE
M1 PAINT 1 (FLOOR)	1/2" x 1/2" VINYL COMPOSITE TILE
M2 PAINT 2 (FLOOR)	1/2" x 1/2" VINYL COMPOSITE TILE
M3 PAINT 3 (FLOOR)	1/2" x 1/2" VINYL COMPOSITE TILE
M4 PAINT 4 (FLOOR)	1/2" x 1/2" VINYL COMPOSITE TILE
M5 PAINT 5 (FLOOR)	1/2" x 1/2" VINYL COMPOSITE TILE
M6 PAINT 6 (FLOOR)	1/2" x 1/2" VINYL COMPOSITE TILE
M7 PAINT 7 (FLOOR)	1/2" x 1/2" VINYL COMPOSITE TILE
M8 PAINT 8 (FLOOR)	1/2" x 1/2" VINYL COMPOSITE TILE
M9 PAINT 9 (FLOOR)	1/2" x 1/2" VINYL COMPOSITE TILE
M10 PAINT 10 (FLOOR)	1/2" x 1/2" VINYL COMPOSITE TILE
M11 PAINT 11 (FLOOR)	1/2" x 1/2" VINYL COMPOSITE TILE
M12 PAINT 12 (FLOOR)	1/2" x 1/2" VINYL COMPOSITE TILE
M13 PAINT 13 (FLOOR)	1/2" x 1/2" VINYL COMPOSITE TILE
M14 PAINT 14 (FLOOR)	1/2" x 1/2" VINYL COMPOSITE TILE
M15 PAINT 15 (FLOOR)	1/2" x 1/2" VINYL COMPOSITE TILE
M16 PAINT 16 (FLOOR)	1/2" x 1/2" VINYL COMPOSITE TILE
M17 PAINT 17 (FLOOR)	1/2" x 1/2" VINYL COMPOSITE TILE
M18 PAINT 18 (FLOOR)	1/2" x 1/2" VINYL COMPOSITE TILE
M19 PAINT 19 (FLOOR)	1/2" x 1/2" VINYL COMPOSITE TILE
M20 PAINT 20 (FLOOR)	1/2" x 1/2" VINYL COMPOSITE TILE
M21 PAINT 21 (FLOOR)	1/2" x 1/2" VINYL COMPOSITE TILE
M22 PAINT 22 (FLOOR)	1/2" x 1/2" VINYL COMPOSITE TILE
M23 PAINT 23 (FLOOR)	1/2" x 1/2" VINYL COMPOSITE TILE
M24 PAINT 24 (FLOOR)	1/2" x 1/2" VINYL COMPOSITE TILE
M25 PAINT 25 (FLOOR)	1/2" x 1/2" VINYL COMPOSITE TILE
M26 PAINT 26 (FLOOR)	1/2" x 1/2" VINYL COMPOSITE TILE
M27 PAINT 27 (FLOOR)	1/2" x 1/2" VINYL COMPOSITE TILE
M28 PAINT 28 (FLOOR)	1/2" x 1/2" VINYL COMPOSITE TILE
M29 PAINT 29 (FLOOR)	1/2" x 1/2" VINYL COMPOSITE TILE
M30 PAINT 30 (FLOOR)	1/2" x 1/2" VINYL COMPOSITE TILE
M31 PAINT 31 (FLOOR)	1/2" x 1/2" VINYL COMPOSITE TILE
M32 PAINT 32 (FLOOR)	1/2" x 1/2" VINYL COMPOSITE TILE
M33 PAINT 33 (FLOOR)	1/2" x 1/2" VINYL COMPOSITE TILE
M34 PAINT 34 (FLOOR)	1/2" x 1/2" VINYL COMPOSITE TILE
M35 PAINT 35 (FLOOR)	1/2" x 1/2" VINYL COMPOSITE TILE
M36 PAINT 36 (FLOOR)	1/2" x 1/2" VINYL COMPOSITE TILE
M37 PAINT 37 (FLOOR)	1/2" x 1/2" VINYL COMPOSITE TILE
M38 PAINT 38 (FLOOR)	1/2" x 1/2" VINYL COMPOSITE TILE
M39 PAINT 39 (FLOOR)	1/2" x 1/2" VINYL COMPOSITE TILE
M40 PAINT 40 (FLOOR)	1/2" x 1/2" VINYL COMPOSITE TILE
M41 PAINT 41 (FLOOR)	1/2" x 1/2" VINYL COMPOSITE TILE
M42 PAINT 42 (FLOOR)	1/2" x 1/2" VINYL COMPOSITE TILE
M43 PAINT 43 (FLOOR)	1/2" x 1/2" VINYL COMPOSITE TILE
M44 PAINT 44 (FLOOR)	1/2" x 1/2" VINYL COMPOSITE TILE
M45 PAINT 45 (FLOOR)	1/2" x 1/2" VINYL COMPOSITE TILE
M46 PAINT 46 (FLOOR)	1/2" x 1/2" VINYL COMPOSITE TILE
M47 PAINT 47 (FLOOR)	1/2" x 1/2" VINYL COMPOSITE TILE
M48 PAINT 48 (FLOOR)	1/2" x 1/2" VINYL COMPOSITE TILE
M49 PAINT 49 (FLOOR)	1/2" x 1/2" VINYL COMPOSITE TILE
M50 PAINT 50 (FLOOR)	1/2" x 1/2" VINYL COMPOSITE TILE
M51 PAINT 51 (FLOOR)	1/2" x 1/2" VINYL COMPOSITE TILE
M52 PAINT 52 (FLOOR)	1/2" x 1/2" VINYL COMPOSITE TILE
M53 PAINT 53 (FLOOR)	1/2" x 1/2" VINYL COMPOSITE TILE
M54 PAINT 54 (FLOOR)	1/2" x 1/2" VINYL COMPOSITE TILE
M55 PAINT 55 (FLOOR)	1/2" x 1/2" VINYL COMPOSITE TILE
M56 PAINT 56 (FLOOR)	1/2" x 1/2" VINYL COMPOSITE TILE
M57 PAINT 57 (FLOOR)	1/2" x 1/2" VINYL COMPOSITE TILE
M58 PAINT 58 (FLOOR)	1/2" x 1/2" VINYL COMPOSITE TILE
M59 PAINT 59 (FLOOR)	1/2" x 1/2" VINYL COMPOSITE TILE
M60 PAINT 60 (FLOOR)	1/2" x 1/2" VINYL COMPOSITE TILE
M61 PAINT 61 (FLOOR)	1/2" x 1/2" VINYL COMPOSITE TILE
M62 PAINT 62 (FLOOR)	1/2" x 1/2" VINYL COMPOSITE TILE
M63 PAINT 63 (FLOOR)	1/2" x 1/2" VINYL COMPOSITE TILE
M64 PAINT 64 (FLOOR)	1/2" x 1/2" VINYL COMPOSITE TILE
M65 PAINT 65 (FLOOR)	1/2" x 1/2" VINYL COMPOSITE TILE
M66 PAINT 66 (FLOOR)	1/2" x 1/2" VINYL COMPOSITE TILE
M67 PAINT 67 (FLOOR)	1/2" x 1/2" VINYL COMPOSITE TILE
M68 PAINT 68 (FLOOR)	1/2" x 1/2" VINYL COMPOSITE TILE
M69 PAINT 69 (FLOOR)	1/2" x 1/2" VINYL COMPOSITE TILE
M70 PAINT 70 (FLOOR)	1/2" x 1/2" VINYL COMPOSITE TILE
M71 PAINT 71 (FLOOR)	1/2" x 1/2" VINYL COMPOSITE TILE
M72 PAINT 72 (FLOOR)	1/2" x 1/2" VINYL COMPOSITE TILE
M73 PAINT 73 (FLOOR)	1/2" x 1/2" VINYL COMPOSITE TILE
M74 PAINT 74 (FLOOR)	1/2" x 1/2" VINYL COMPOSITE TILE
M75 PAINT 75 (FLOOR)	1/2" x 1/2" VINYL COMPOSITE TILE
M76 PAINT 76 (FLOOR)	1/2" x 1/2" VINYL COMPOSITE TILE
M77 PAINT 77 (FLOOR)	1/2" x 1/2" VINYL COMPOSITE TILE
M78 PAINT 78 (FLOOR)	1/2" x 1/2" VINYL COMPOSITE TILE
M79 PAINT 79 (FLOOR)	1/2" x 1/2" VINYL COMPOSITE TILE
M80 PAINT 80 (FLOOR)	1/2" x 1/2" VINYL COMPOSITE TILE
M81 PAINT 81 (FLOOR)	1/2" x 1/2" VINYL COMPOSITE TILE
M82 PAINT 82 (FLOOR)	1/2" x 1/2" VINYL COMPOSITE TILE
M83 PAINT 83 (FLOOR)	1/2" x 1/2" VINYL COMPOSITE TILE
M84 PAINT 84 (FLOOR)	1/2" x 1/2" VINYL COMPOSITE TILE
M85 PAINT 85 (FLOOR)	1/2" x 1/2" VINYL COMPOSITE TILE
M86 PAINT 86 (FLOOR)	1/2" x 1/2" VINYL COMPOSITE TILE
M87 PAINT 87 (FLOOR)	1/2" x 1/2" VINYL COMPOSITE TILE
M88 PAINT 88 (FLOOR)	1/2" x 1/2" VINYL COMPOSITE TILE
M89 PAINT 89 (FLOOR)	1/2" x 1/2" VINYL COMPOSITE TILE
M90 PAINT 90 (FLOOR)	1/2" x 1/2" VINYL COMPOSITE TILE
M91 PAINT 91 (FLOOR)	1/2" x 1/2" VINYL COMPOSITE TILE
M92 PAINT 92 (FLOOR)	1/2" x 1/2" VINYL COMPOSITE TILE
M93 PAINT 93 (FLOOR)	1/2" x 1/2" VINYL COMPOSITE TILE
M94 PAINT 94 (FLOOR)	1/2" x 1/2" VINYL COMPOSITE TILE
M95 PAINT 95 (FLOOR)	1/2" x 1/2" VINYL COMPOSITE TILE
M96 PAINT 96 (FLOOR)	1/2" x 1/2" VINYL COMPOSITE TILE
M97 PAINT 97 (FLOOR)	1/2" x 1/2" VINYL COMPOSITE TILE
M98 PAINT 98 (FLOOR)	1/2" x 1/2" VINYL COMPOSITE TILE
M99 PAINT 99 (FLOOR)	1/2" x 1/2" VINYL COMPOSITE TILE
M100 PAINT 100 (FLOOR)	1/2" x 1/2" VINYL COMPOSITE TILE



LEVEL 2 FINISH PLAN
1/8"=1'-0"

36"x48" sheets are full size drawings -- 18"x24" sheets are half size drawings.

PERMIT SET #2: 09-17-13

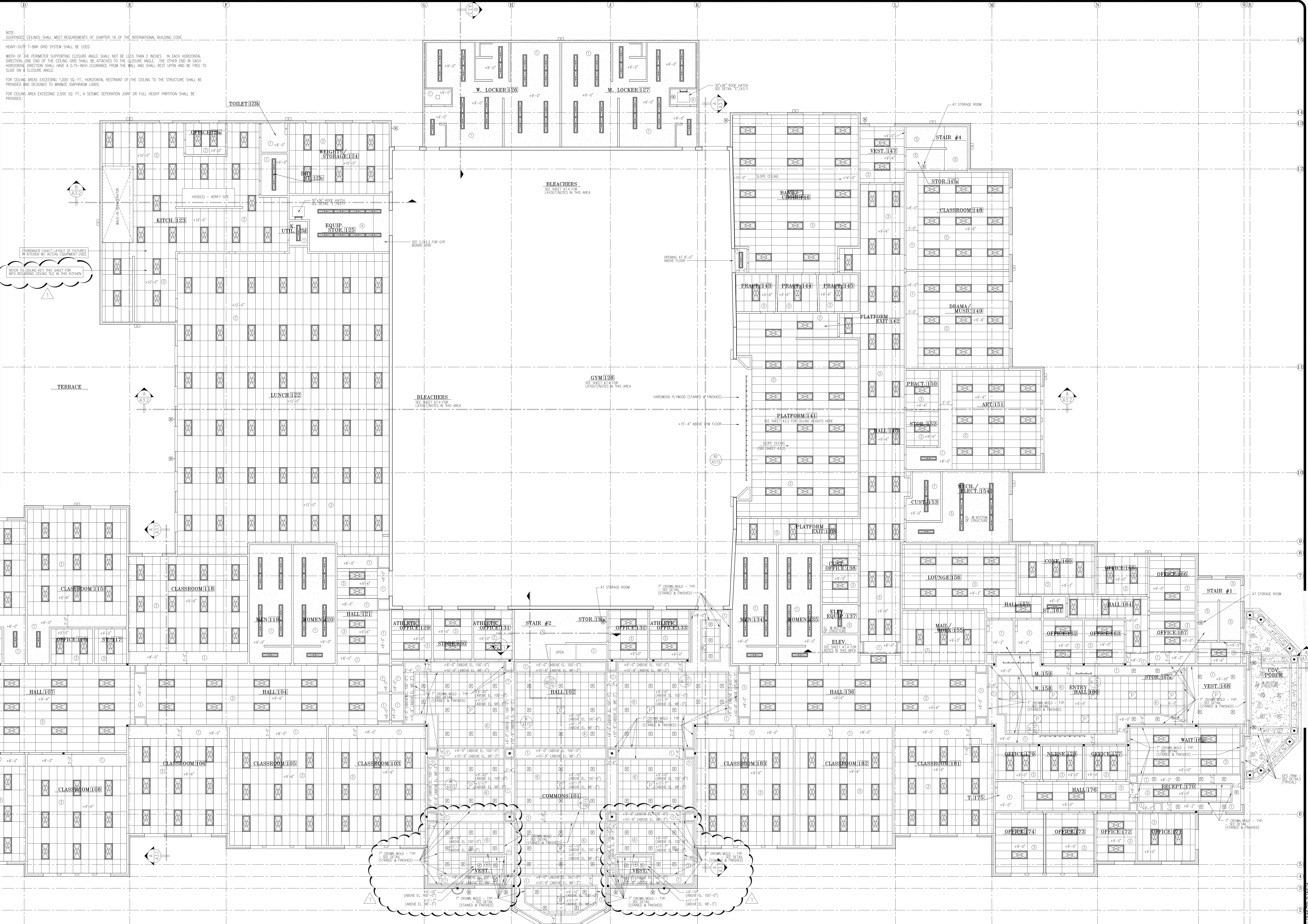
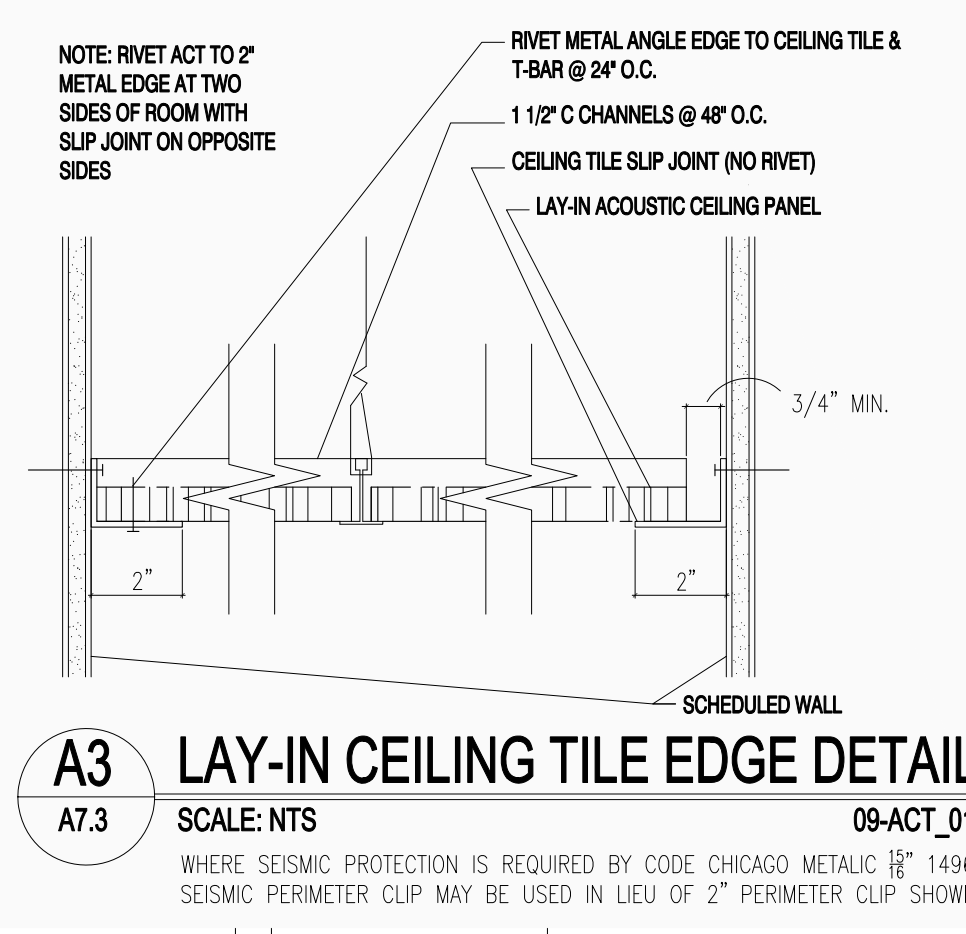
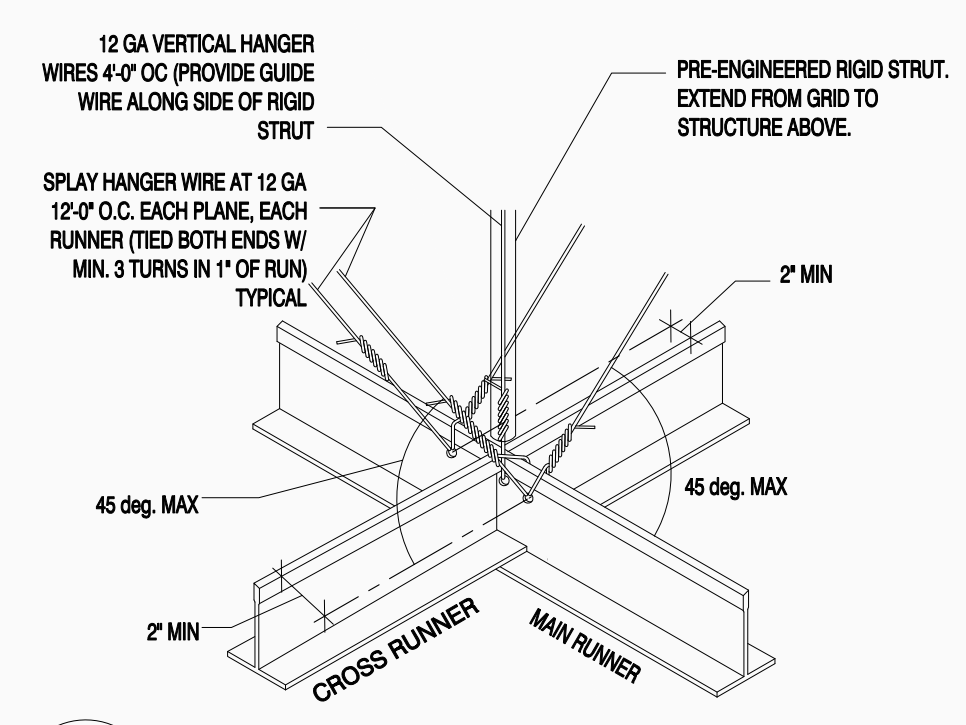
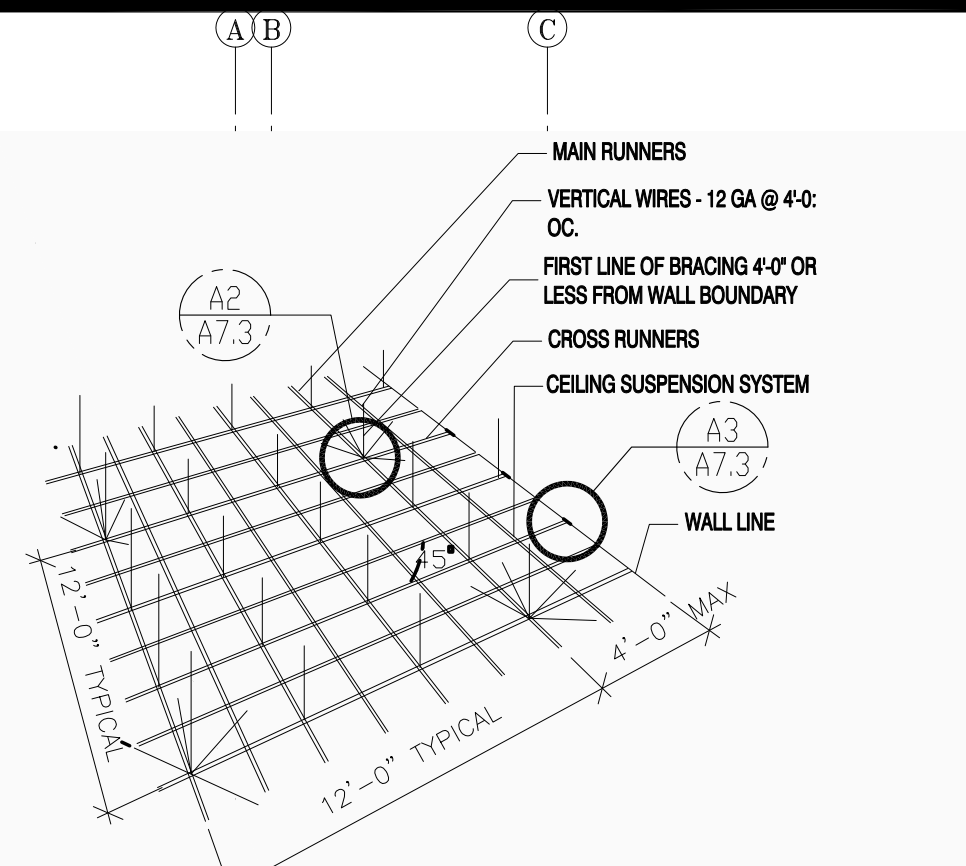
REVISIONS	DATE	DESCRIPTION
1	09/17/13	



PROVIDENCE HALL HIGH SCHOOL
HERRIMAN
LEVEL 2 FINISH PLAN
UTAH

DRAWN KWH	CHECKED KBH	SHEET
DATE SEPTEMBER 2013		A7.2
JOB NO.		

THESE DRAWINGS OR ANY PARTS THEREOF, AS INSTRUMENTS OF SERVICE, REMAIN THE PROPERTY OF THE ARCHITECTS AND MAY NOT BE REPRODUCED OR USED IN OTHER WORK WITHOUT THEIR WRITTEN CONSENT.



FIXTURE LEGEND

- LIGHT
- RECESSED CAN
- PENDANT LIGHT
- WALL SCHEDULE - MOUNT 7'-0" ABOVE FINISHED FLOOR
- WALL LIGHT
- WALL PACK LIGHTING
- TRACK LIGHTING
- 1/4" SURFACE MOUNT LIGHT FIXTURE
- SUSPENDED LIGHT FIXTURE (SEE ELEC. DRWG.)
- 24" x 24" SURFACE MOUNT SUSPENDED - SEE ELEC. DRWG.

CEILING KEY

MARK	SYMBOL	DESCRIPTION
1	○	2" x 2" TYP. "C" CHANNEL BRACKET, RECESSED & PAINTED (USE WATER RESISTANT ZIP W/ DRYWALL AT WALLS, CORNERS & LOKER ROOMS - TYPICAL)
2	○	1/4" x 1/4" x 1/4" ACOUSTIC CEILING TILE, RECESSED & PAINTED (USE PROJECT MANUAL FOR ACCEPTABLE COLOR & FINISH - SEE FINISH PLANS)
3	○	2" x 2" x 1/4" ACOUSTIC CEILING TILE (RECESSED & PAINTED)
4	○	2" x 2" x 1/4" ACOUSTIC CEILING TILE (RECESSED & PAINTED)
5	○	(2) LAYERS 5/8" TYP. "C" CHANNEL BRACKET, RECESSED & PAINTED (1 HOUR RATED)
6	○	2" x 2" x 1/4" ACOUSTIC CEILING TILE (RECESSED & PAINTED) ON GRID SYSTEM

LEVEL 1 REFLECTED CEILING PLAN

SHEET NOTES

- SEE DETAIL A1.3 FOR SUSPENDED CEILING DETAILS.
- REFLECTED CEILING PLAN IS SCHEMATIC ONLY FOR EXACT LOCATION AND FIXTURE QUANT. SEE ELECTRICAL DRAWING.
- SEE MECHANICAL DRAWINGS FOR EXHAUST INFORMATION.
- DRYWALL LOCATED IN ALL RECESSED CAN, WALL-FLOOR AND ROOF JOISTS.
- ALWAYS FRAMING AT FLOORS AND ROOFS TO ALLOW FOR PLUMBING FIXTURE TRAVEL, ROOF ACCESS, ETC.
- ALL NEW WALL PARTITIONS (PARTED WALLS, ETC.) SHALL BE BUILT WITH 1/2" TYP. "C" CHANNEL BRACKET.
- LOCATING FIXTURES MUST NOT EXTEND BELOW 8" ABOVE THE FLOOR SURFACE IN THE OCCUPATION PLAN.

36"x48" sheets are full size drawings -- 18"x24" sheets are half size drawings.

PERMIT SET #2: 09-17-13

REVISIONS

NO.	DATE	DESCRIPTION
1	09/17/13	

KEN FARRIS ARCHITECT

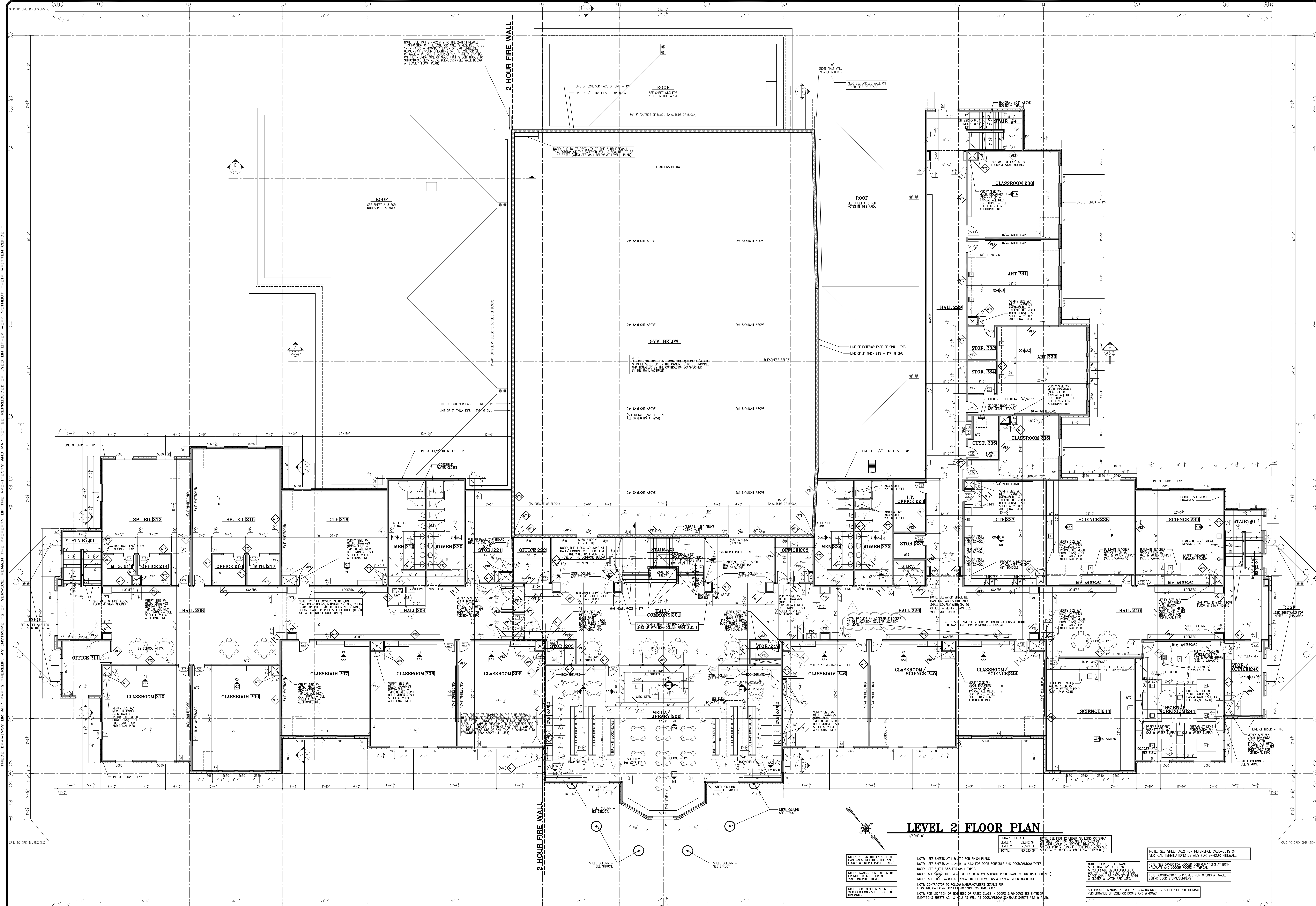
1820 NORTH UNIVERSITY AVENUE SUITE 4000 PROVO UT 84604 PHONE 801.377.4333

PROVIDENCE HALL HIGH SCHOOL

HERRIMAN UTAH

LEVEL 1 REFLECTED CEILING PLAN

DRAWN BY: KWH
CHECKED BY: KBH
DATE: SEPTEMBER 2013
SCALE: AS SHOWN
JOB NO.:
SHEET: **A7.3**



LEVEL 2 FLOOR PLAN

1/8"=1'-0"

SQUARE FOOTAGE: LEVEL 1: 52,812 SF; LEVEL 2: 30,333 SF; TOTAL: 83,145 SF

NOTE: SEE SHEET A1.1 & A1.2 FOR FINISH PLANS

NOTE: SEE SHEETS A1.1, A1.2, & A1.3 FOR DOOR SCHEDULE AND DOOR/WINDOW TYPES

NOTE: SEE SHEET A3.1 FOR WALL TYPES

NOTE: SEE SHEET A3.2 FOR EXTERIOR WALLS (BOTH ROOF-FRAME & CMU-BASED) (I.A.D.)

NOTE: SEE SHEET A7.1 FOR TYPICAL TOILET ELEVATIONS & TYPICAL MOUNTING DETAILS

NOTE: CONTRACTOR TO FOLLOW MANUFACTURER'S DETAILS FOR FLASHING, CALLING FOR EXTERIOR WINDOWS AND DOORS

NOTE: FOR LOCATION OF THERMO-RATED GLASS IN DOORS & WINDOWS SEE EXTERIOR ELEVATIONS SHEETS A1.1 & A1.2 AS WELL AS DOOR/WINDOW SCHEDULE SHEETS A1.1 & A1.2

NOTE: WITHIN THE ENDS OF ALL PARTITIONS, PROVIDE 2x4 STUDS @ 16" O.C. FROM FINISH TO FINISH

NOTE: FRAMING CONTRACTOR TO PROVIDE BRACING FOR ALL WALL-MOUNTED ITEMS

NOTE: FOR LOCATION & SIZE OF WALL COLUMNS SEE STRUCTURAL DRAWINGS

NOTE: SEE SHEET A0.2 FOR REFERENCE CALL-OUTS OF VERTICAL TERMINATIONS DETAILS FOR 2-HOUR FIREWALL

NOTE: SEE SHEET A0.2 FOR REFERENCE CALL-OUTS OF VERTICAL TERMINATIONS DETAILS FOR 2-HOUR FIREWALL

NOTE: CONTRACTOR TO PROVIDE REINFORCING AT WALLS BEHIND DOOR STOPS/BUMPERS

SEE PROJECT MANUAL AS WELL AS CALLING NOTE ON SHEET A4.1 FOR THERMAL PERFORMANCE OF EXTERIOR DOORS AND WINDOWS

REVISIONS	DATE	DESCRIPTION
1	09/17/13	



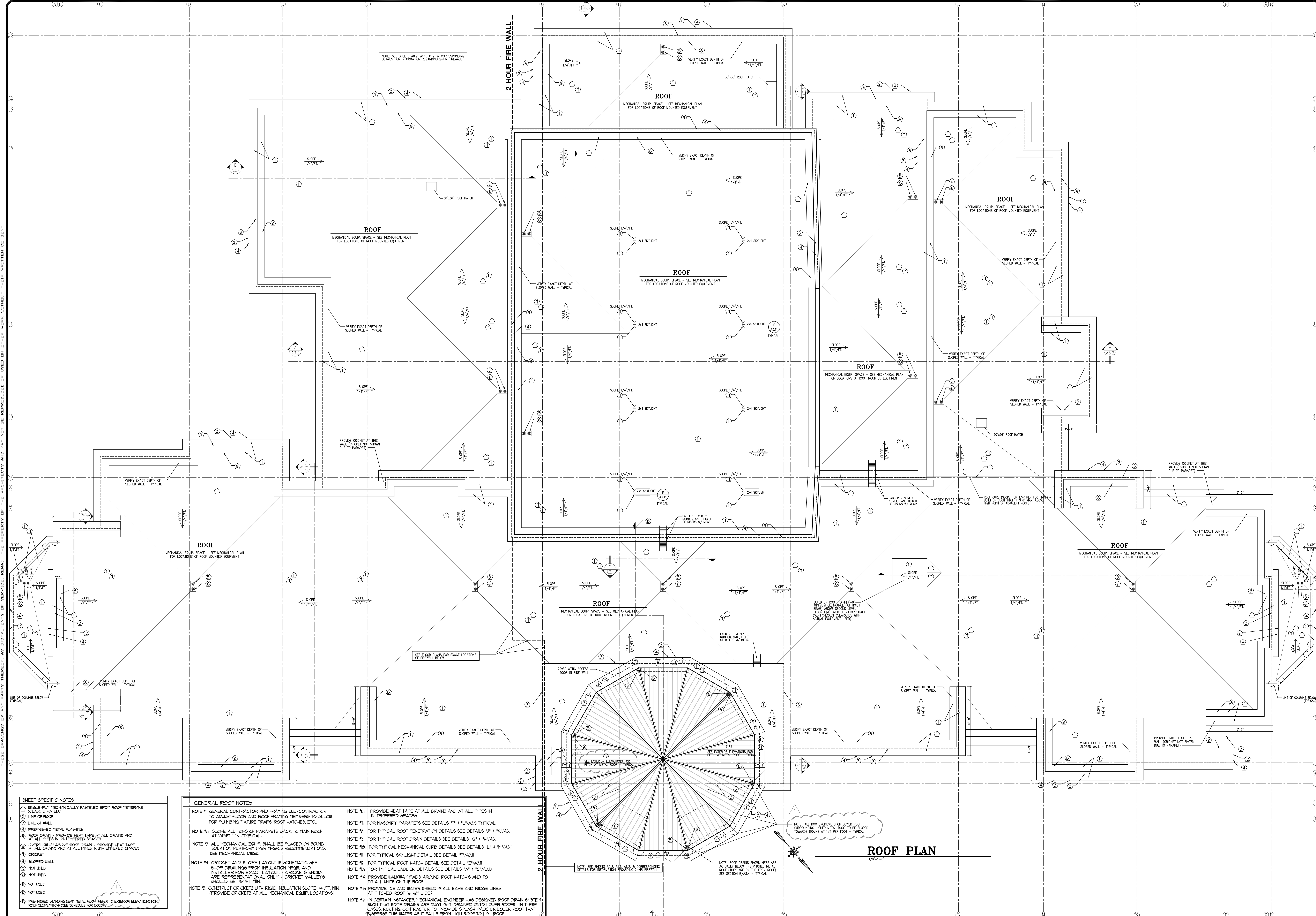
PROVIDENCE HALL HIGH SCHOOL
HERRIMAN
LEVEL 2 FLOOR PLAN
UTAH

PERMIT SET #2: 09-17-13

DRAWN: KBH
CHECKED: KBH
DATE: SEPTEMBER 2013
SCALE: AS SHOWN
JOB NO.

A1.2

THESE DRAWINGS OR ANY PARTS THEREOF, AS INSTRUMENTS OF SERVICE, REMAIN THE PROPERTY OF THE ARCHITECTS AND MAY NOT BE REPRODUCED OR USED IN OTHER WORK WITHOUT THEIR WRITTEN CONSENT.



- SHEET SPECIFIC NOTES**
- 1) SINGLE-PLY MECHANICALLY FASTENED EPDM ROOF MEMBRANE (CLASS B RATED)
 - 2) LINE OF ROOF
 - 3) LINE OF WALL
 - 4) FRESHENED METAL FLASHING
 - 5) ROOF DRAIN - PROVIDE HEAT TAPE AT ALL DRAINS AND AT ALL PIPES IN UN-TEMPERED SPACES
 - 6) OVERFLOW 2" ABOVE ROOF DRAIN - PROVIDE HEAT TAPE AT ALL DRAINS AND AT ALL PIPES IN UN-TEMPERED SPACES
 - 7) CRICKET
 - 8) SLOPED WALL
 - 9) NOT USED
 - 10) NOT USED
 - 11) NOT USED
 - 12) NOT USED
 - 13) FRESHENED STANDING SEAM METAL ROOF (REFER TO EXTERIOR ELEVATIONS FOR ROOF SLOPE) (SEE SCHEDULE FOR COLOR)

- GENERAL ROOF NOTES**
- NOTE #1: GENERAL CONTRACTOR AND FRAMING SUB-CONTRACTOR TO ADJUST FLOOR AND ROOF FRAMING MEMBERS TO ALLOW FOR PLUMBING FIXTURE TRAPS, ROOF HATCHES, ETC.
- NOTE #2: SLOPE ALL TOPS OF PARAPETS BACK TO MAIN ROOF AT 1/4" FT. MIN. (TYPICAL)
- NOTE #3: ALL MECHANICAL EQUIP. SHALL BE PLACED ON SOUND SOLATION PLATFORM (PER MEGR'S RECOMMENDATIONS) SEE MECHANICAL DUGS.
- NOTE #4: CRICKET AND SLOPE LAYOUT IS SCHEMATIC SEE SHOP DRAWINGS FROM INSULATION MFR. AND INSTALLER FOR EXACT LAYOUT. CRICKETS SHOWN ARE REPRESENTATIONAL ONLY - CRICKET VALLEYS SHOULD BE 1/8" FT. MIN.
- NOTE #5: CONSTRUCT CRICKETS WITH RIGID INSULATION SLOPE 1/4" FT. MIN. (PROVIDE CRICKETS AT ALL MECHANICAL EQUIP. LOCATIONS)

- NOTE #6: PROVIDE HEAT TAPE AT ALL DRAINS AND AT ALL PIPES IN UN-TEMPERED SPACES
- NOTE #7: FOR MASONRY PARAPETS SEE DETAILS "P" 4 "1" / A33 TYPICAL
- NOTE #8: FOR TYPICAL ROOF PENETRATION DETAILS SEE DETAILS "U" 4 "K" / A33
- NOTE #9: FOR TYPICAL ROOF DRAIN DETAILS SEE DETAILS "G" 4 "N" / A33
- NOTE #10: FOR TYPICAL MECHANICAL CURB DETAILS SEE DETAILS "L" 4 "M" / A33
- NOTE #11: FOR TYPICAL SKYLIGHT DETAIL SEE DETAIL "F" / A33
- NOTE #12: FOR TYPICAL ROOF HATCH DETAIL SEE DETAIL "E" / A33
- NOTE #13: FOR TYPICAL LADDER DETAILS SEE DETAILS "A" 4 "10" / A33
- NOTE #14: PROVIDE WALKWAY PADS AROUND ROOF HATCHES AND TO ALL UNITS ON THE ROOF.
- NOTE #15: PROVIDE ICE AND WATER SHIELD - ALL EAVE AND RIDGE LINES AT PITCHED ROOF (6"-0" WIDE)
- NOTE #16: IN CERTAIN INSTANCES MECHANICAL ENGINEER HAS DESIGNED ROOF DRAIN SYSTEM SUCH THAT SOME DRAINS ARE DAYLIGHT-DRAINED ONTO LOWER ROOFS. IN THESE CASES ROOFING CONTRACTOR TO PROVIDE SPLASH PADS ON LOWER ROOF THAT DISPERSE THIS WATER AS IT FALLS FROM HIGH ROOF TO LOW ROOF.

ATTIC VENTILATION CALCS. (PITCHED ROOF ONLY)

2/98 SF ATTIC
1: 300

15 SF FREE AREA REQUIRED
50% (3.15 SF) PROVIDED IN VENTED SOFFITS
50% (3.15 SF) PROVIDED WITH RIDGE VENTS OR TURTLE VENTS (TURTLE VENTS TO BE ON BACK SIDE)

REVISIONS	DATE	DESCRIPTION
1	09/17/13	



PROVIDENCE HALL HIGH SCHOOL
HERRIMAN UTAH

ROOF PLAN

PERMIT SET #2: 09-17-13

DRAWN: KWH
CHECKED: KBH
DATE: SEPTEMBER 2013
SCALE: AS SHOWN
JOB NO.

SHEET **A1.3**

36"x48" sheets are full size drawings -- 18"x24" sheets are half size drawings.

SITE CONSTRUCTION

- (2) FINISH GRADE - SLOPE AWAY 1/2" PER FOOT MIN.
- (3) ENGINEERED GRAVEL FILL - SEE STRUCTURAL & GEOTECH.
- CONCRETE**
- (1) CONCRETE FOUNDATION WALL - SEE STRUCTURAL DRAWINGS
- (2) CONCRETE FOOTING - SEE STRUCT. FOOTING AND FND. PLAN
- (3) 4" REINFORCED CONCRETE SLAB - SEE STRUCTURAL DRAWINGS FOR REINFORCING
- (4) SLAB CONTROL JOISTS AS SHOWN SLAB/FLOOR PLAN & DETAILS.
- (5) GRC COLUMN & BASE - SEE DETAIL "D"/A3.13
- (6) 1-1/2" GYP CRETE
- (7) 4-1/2" PRECAST CONCRETE BASE (SMOOTH FINISH) - SEE DETAIL
- (8) PRECAST LINTEL 9" TALL
- (9) PRECAST SILL 6" TALL
- (10) CONCRETE BASE: 10" TALL +/- (HEIGHT VARIES SLIGHTLY DUE TO POROS SLOPE)
- (11) CONCRETE BASE: 13" TALL +/- (HEIGHT VARIES SLIGHTLY DUE TO POROS SLOPE)
- (12) PRECAST PANEL - SEE DETAILS ON SHEETS A4.1 & A4.2

MASONRY

- (1) BRICK W/ HECKMANN NO.260 22 GA. TIES NAILED TO STUDS AT 16" O/C. BOTH WAYS. CRIMP FREE END OF TIE AROUND CONTINUOUS 9 GA. WIRE IN HORIZONTAL JOINTS AT 16" O/C
- (2) AIR SPACE
- (3) CONCRETE MASONRY UNIT WALL - MASONRY FILL INSL. AT EXTERIOR WALLS - SEE STRUCT.
- (4) BRICK SOLDIER COURSE
- METALS**
- (1) STEEL COLUMN - SEE STRUCT.
- (2) STEEL ANGLE - SEE STRUCT.
- (3) STEEL BEAM - SEE STRUCT.
- (4) SIMPSON HANGER - SEE STRUCT.
- (5) METAL ANCHOR - SEE STRUCT.
- (6) PREFINISHED METAL FLASHING
- (7) METAL REGLET
- (8) STEEL ROOF JOIST - SEE STRUCT.

WOOD AND PLASTICS

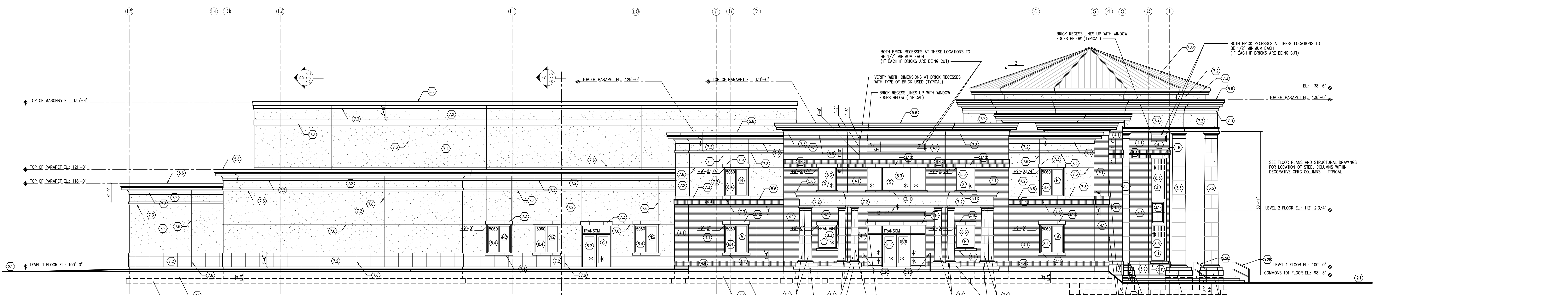
- (1) 1/2"x1 1/2" 11 GA. STEEL TUBE HANDRAILING WITH ROUNDED EDGES - TOP - 36" A.F.F. - SEE DETAIL 2/A3.1 (PAINTED)
- (2) 2x4 STUDS - SEE STRUCTURAL FOR SPAACING
- (3) 1/4" HARDWOOD PLYWOOD (STAINED & FINISHED)
- (4) BLOCKING - SEE STRUCT.
- (5) 2x6 TREATED PLATE - SEE STRUCT. FOR BOLT SIZE AND SPAACING
- (6) PARALLEL CHORD WOOD ROOF TRUSSES - SEE STRUCTURAL DRAWINGS
- (7) DOUBLE-2x TOP PLATE 48" LAP SPURCE MIN.
- (8) TREATED 2x PLATE - SEE STRUCT.
- (9) WOOD FLOOR JOISTS - SEE STRUCTURAL DRAWINGS
- (10) 3/4" T & G SHEATHING NAIL AND GLUE
- (11) 3/4" PLYWOOD (PAINTED)
- (12) STEEL DECK - SEE STRUCT.
- (13) STEEL TUBE - SEE STRUCT.
- (14) METAL ANCHOR - SEE STRUCT.
- (15) 7/16" CDX PLYWOOD OR O.S.B. SHEATHING - SEE STRUCT.
- (16) SOLID BLOCKING
- (17) WOOD ROOF JOISTS - SEE STRUCTURAL DRAWINGS
- (18) 3/4" HARDWOOD RISER (STAINED & FINISHED)
- (19) 1 1/8" HARDWOOD TREAD (STAINED & FINISHED)
- (20) HARDWOOD EDGE CAP ON EXPOSED SIDE (STAINED & FINISHED) - SEE DETAIL 2/A3.1
- (21) FACTORY ENGINEERED WOOD TRUSSES @ 24" O/C
- (22) HARDWOOD FLOOR SYSTEM - SEE DETAIL "D"/A3.9
- (23) WOOD COLUMN - SEE STRUCT.
- (24) 2x4 @ 24" O/C
- (25) RIM BOARD - SEE STRUCT.
- (26) HARDWOOD HANDRAILING +36" FROM NOSING - SEE DET. 1/A3.1 (STAINED & FINISHED)
- (27) WOOD BEAM - SEE STRUCT.

THERMAL & MOISTURE

- (1) EXTERIOR INSULATION & FINISH SYSTEM (EFS) - SEE SHEET A3.14
- (2) EPS TRIMS - SEE DETAILS
- (3) AIR BARRIER - EQUAL TO TYVEK STUCCOWRAP (TAPE AND SEAL SEAMS & PENETRATIONS)
- (4) 2" RIGID INSULATION
- (5) V-GROOVE REVEAL @ EIFS
- (6) 1.3/4"x16" LVL STRINGERS @ 16" O/C
- (7) 3/4" PINE RISER
- (8) 1 1/8" TREAD
- (9) 2x6 @ 24" O/C
- (10) HARDWOOD GUARDRAIL - 42" A.F.F. - SUCH THAT 4" SPHERE MAY NOT PASS THRU (STAINED & FINISHED)
- (11) 5/8" CDX PLYWOOD OR O.S.B. SHEATHING - SEE STRUCT.
- (12) 2x12 TREATED PLATE - SEE STRUCT. FOR BOLT SIZE AND SPAACING
- (13) 1/4" HARDWOOD PLYWOOD (STAINED & FINISHED)
- (14) 2x4 CROSS BRACING BETWEEN TRUSSES @ 24" O/C BY TRUSS MFR.

DOORS AND WINDOWS

- (1) ALUMINUM ENTRY SYSTEM
- (2) ALUMINUM STOREFRONT SYSTEM
- (3) VINYL WINDOW W/ INTEGRAL BRICK MOLD - SEE PLAN AND ELEV. FOR SIZES
- (4) HOLLOW METAL WINDOW - SEE PLAN AND ELEV. FOR SIZES
- (5) HOLLOW METAL DOOR/FRAME - SEE PLAN AND ELEV. FOR SIZES
- FINISHES**
- (1) 5/8" TYPE X GYP BOARD
- (2) 2 LAYERS 5/8" TYPE X GYP. BOARD
- (3) 5/8" TYPE "C" GYP. BD. ON CEILING
- (4) ACOUSTIC TILE (REVEAL EDGE) ON SUSPENDED SYSTEM (NON RATED-U.N.O.)
- (5) 5/8" EXTERIOR GYPSUM SHEATHING
- (6) 5/8" TYPE "X" GYP BD OVER 7/8" FURRING HAT CHANNELS
- (7) 4 MIL VLSQUEEN MOISTURE BARRIER
- (8) BATT INSULATION - R13
- (9) BATT INSULATION - R30
- (10) FIBERFL INSULATION - EQUAL TO OPTIMA
- (11) SINGLE-PLY MECHANICALLY FASTENED EPDM ROOF MEMBRANE (CLASS B RATED)
- (12) MINIMUM 1/4" ROOF COVER BOARD
- (13) EFS SYSTEM
- (14) RIGID INSULATION - R30 MIN.
- (15) 15 MIL POLYETHYLENE MOISTURE BARRIER W/ JOINTS LAPPED NOT LESS THAN 6" (PUNCTURE RESISTANT) - POUR SLAB AND INSTALL BARRIER PER AD RECOMMENDATIONS TO PREVENT SLAB CURLING
- (16) VENTED ATTIC SPACE - 1/300 OF ATTIC AREA
- (17) SORE IN SOFFITS - SORE IN UPPER 1/3 OF ATTIC AREA
- (18) ICE & WATER SHIELD AT EAVES
- (19) PREFINISHED STANDING SEAM METAL ROOF



LEFT SIDE ELEVATION

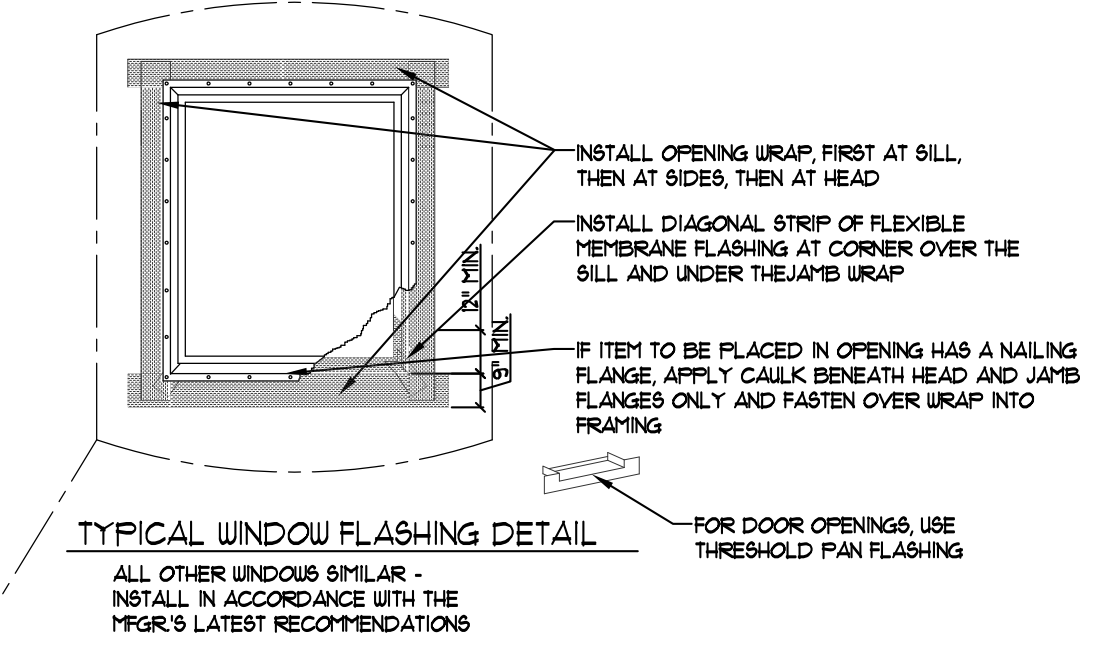
NOTE: VERIFY ALL FOOTING DEPTHS WITH CIVIL PLANS - MUST MAINTAIN 30" MIN. FROM FINISH GRADE TO BOTTOM OF FOOTING.

* = TEMPERED GLASS
R = RATED GLASS

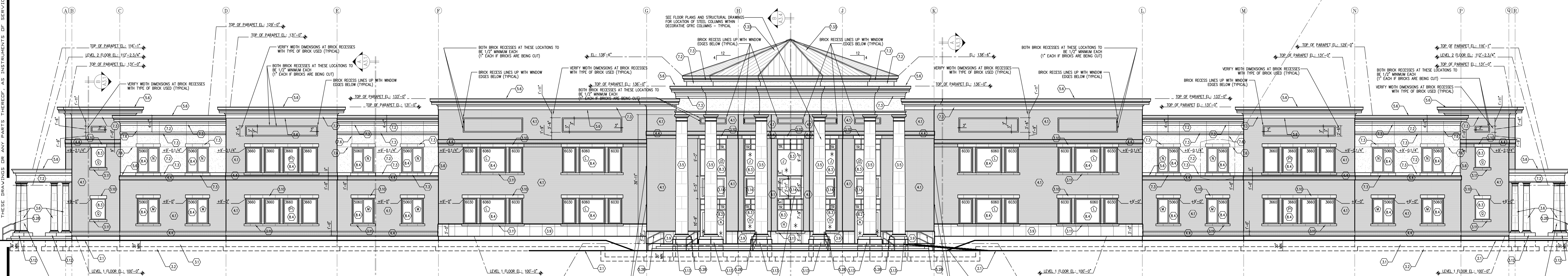
SEE SHEETS A4.1 & A4.16 FOR DOOR AND WINDOW TYPES

SEE PROJECT MANUAL AS WELL AS GLAZING NOTE ON SHEET A4.1 FOR THERMAL PERFORMANCE OF EXTERIOR DOORS AND WINDOWS.

ALL EXPOSED CONCRETE SHALL HAVE A RUBBED SMOOTH SAND PLASTER FINISH



TYPICAL WINDOW FLASHING DETAIL



FRONT ELEVATION

NOTE: VERIFY ALL FOOTING DEPTHS WITH CIVIL PLANS - MUST MAINTAIN 30" MIN. FROM FINISH GRADE TO BOTTOM OF FOOTING.

* = TEMPERED GLASS
R = RATED GLASS

SEE SHEETS A4.1 & A4.16 FOR DOOR AND WINDOW TYPES

SEE PROJECT MANUAL AS WELL AS GLAZING NOTE ON SHEET A4.1 FOR THERMAL PERFORMANCE OF EXTERIOR DOORS AND WINDOWS.

ALL EXPOSED CONCRETE SHALL HAVE A RUBBED SMOOTH SAND PLASTER FINISH

36"x48" sheets are full size drawings -- 18"x24" sheets are half size drawings. PERMIT SET #2: 09-17-13

REVISIONS	DATE	DESCRIPTION
1	09/17/13	



PROVIDENCE HALL HIGH SCHOOL
HERRIMAN UTAH
EXTERIOR ELEVATIONS

DRAWN KWH	CHECKED KBH	SHEET
DATE SEPTEMBER 2013		A2.1
SCALE		
JOB NO.		

- SITE CONSTRUCTION**
- (21) FINISH GRADE - SLOPE AWAY 1/2" PER FOOT MIN.
 - (22) ENGINEERED GRAVEL FILL - SEE STRUCTURAL & GEOTECH.
- CONCRETE**
- (1) CONCRETE FOUNDATION WALL - SEE STRUCTURAL DRAWINGS
 - (2) CONCRETE FOOTING - SEE STRUCT. FOOTING AND FND. PLAN
 - (3) 4" REINFORCED CONCRETE SLAB - SEE STRUCTURAL DRAWINGS FOR REINFORCING
 - (4) SLAB CONTROL JOINTS AS SHOWN SLAB/FLOOR PLAN & DETAILS.
 - (5) GRC COLUMN & BASE - SEE DETAIL "D1"/A3.13
 - (6) GRC COLUMN & BASE - SEE DETAIL "D1"/A3.13
 - (7) 1-1/2" GYP CRETE
 - (8) 4-1/2" PRECAST CONCRETE BASE (SMOOTH FINISH) - SEE DETAIL
 - (9) PRECAST LINTEL 9" TALL
 - (10) PRECAST SILL 6" TALL
 - (11) CONCRETE BASE: 10" TALL +/- (HEIGHT VARIES SLIGHTLY DUE TO PORCH SLOPE)
 - (12) CONCRETE BASE: 13" TALL +/- (HEIGHT VARIES SLIGHTLY DUE TO PORCH SLOPE)
 - (13) PRECAST PANEL - SEE DETAILS ON SHEETS A4.1 & A4.2

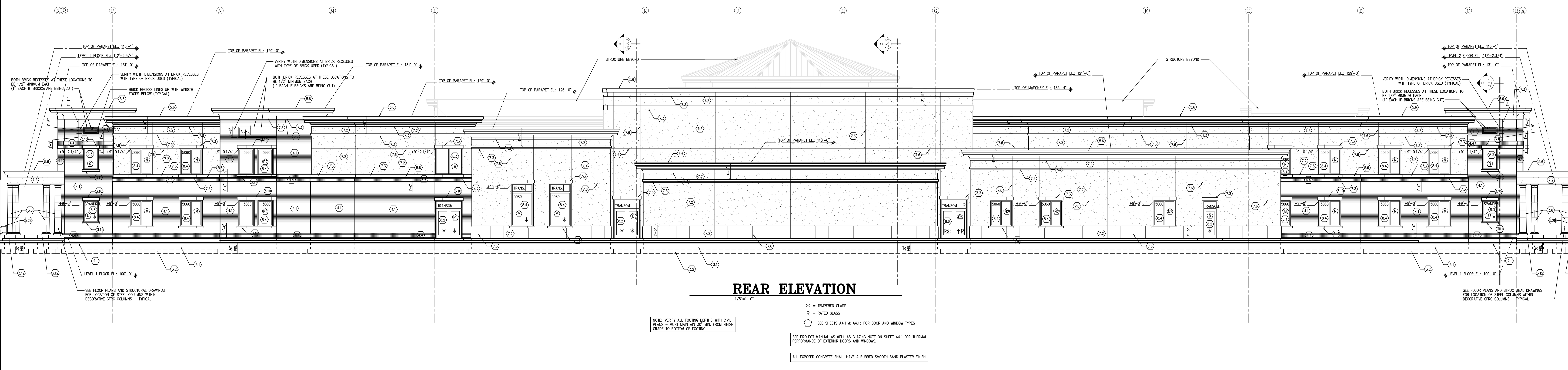
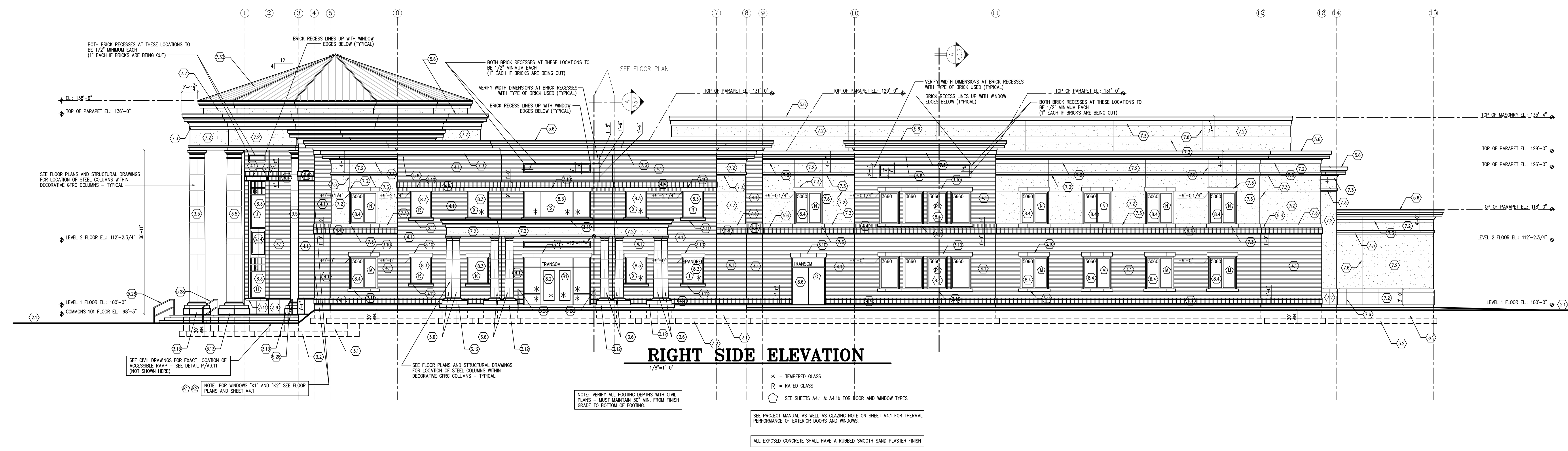
- MASONRY**
- (14) BRICK W/ HECKMANN NO.250 22 GA. TIES NAILED TO STUDS AT 16" O/C. BOTH WAYS. CRIMP FREE END OF TIE AROUND CONTINUOUS 9 GA. WIRE IN HORIZONTAL JOINTS AT 16" O/C
 - (15) AIR SPACE
 - (16) CONCRETE MASONRY UNIT WALL - MASONRY FILL INSUL. AT EXTERIOR WALLS - SEE STRUCT.
 - (17) BRICK SOLDIER COURSE
- METALS**
- (18) STEEL COLUMN - SEE STRUCT.
 - (19) STEEL ANGLE - SEE STRUCT.
 - (20) STEEL BEAM - SEE STRUCT.
 - (21) SIMPSON HANGER - SEE STRUCT.
 - (22) METAL ANCHOR - SEE STRUCT.
 - (23) PREFINISHED METAL FLASHING
 - (24) METAL REGLET
 - (25) STEEL ROOF JOIST - SEE STRUCT.

- WOOD AND PLASTICS**
- (26) 2x4 STUDS - SEE STRUCTURAL FOR SPAACING
 - (27) 2x6 STUDS - SEE STRUCTURAL FOR SPAACING
 - (28) 1/4" HARDWOOD PLYWOOD (STAINED & FINISHED)
 - (29) BLOCKING - SEE STRUCT.
 - (30) 2x6 TREATED PLATE - SEE STRUCT. FOR BOLT SIZE AND SPAACING
 - (31) PARALLEL CHORD WOOD ROOF TRUSSES - SEE STRUCTURAL DRAWINGS
 - (32) DOUBLE-2x TOP PLATE 48" LAP SPLICE MIN.
 - (33) TREATED 2x PLATE - SEE STRUCT.
 - (34) WOOD FLOOR JOISTS - SEE STRUCTURAL DRAWINGS
 - (35) 3/4" T & G SHEATHING NAIL AND GLUE
 - (36) 3/4" PLYWOOD (PAINTED)

- (37) BLOCKING AT +8'-0"
 - (38) 7/16" CDX PLYWOOD OR O.S.B. SHEATHING - SEE STRUCT.
 - (39) SOLID BLOCKING
 - (40) WOOD ROOF JOISTS - SEE STRUCTURAL DRAWINGS
 - (41) 3/4" HARDWOOD RISER (STAINED & FINISHED)
 - (42) 1/18" HARDWOOD TREAD (STAINED & FINISHED)
 - (43) HARDWOOD EDGE CAP ON EXPOSED SIDE (STAINED & FINISHED) - SEE DETAIL 2/A3.1
 - (44) FACTORY ENGINEERED WOOD TRUSSES @ 24" O/C
 - (45) 2x4 @ 24" O/C BY TRUSS MFR.
 - (46) WOOD COLUMN - SEE STRUCT.
 - (47) 2x4 @ 24" O/C
 - (48) RIM BOARD - SEE STRUCT.
 - (49) HARDWOOD HANDRAILING +36" FROM NOSING - SEE DET. 1/A3.1 (STAINED & FINISHED)
 - (50) WOOD BEAM - SEE STRUCT.
- THERMAL & MOISTURE**
- (51) EXTERIOR INSULATION & FINISH SYSTEM (EFS) - SEE SHEET A3.14
 - (52) EPS TRIMS - SEE DETAILS
 - (53) AIR BARRIER - EQUAL TO TYVEK STUCCOWRAP (TAPE AND SEAL SEAMS & PENETRATIONS)
 - (54) 2" RIGID INSULATION
 - (55) V-GROOVE REVEAL @ EIFS

- (56) 4 MIL VISQUEEN MOISTURE BARRIER
- (57) BATT INSULATION - R13
- (58) BATT INSULATION - R30
- (59) FIBERFL INSULATION - EQUAL TO OPTIMA
- (60) SINGLE-PLY MECHANICALLY FASTENED EPDM ROOF MEMBRANE (CLASS B RATED)
- (61) MINIMUM 1/4" ROOF COVER BOARD
- (62) EFS SYSTEM
- (63) RIGID INSULATION - R30 MIN.
- (64) 15 MIL POLYETHYLENE MOISTURE BARRIER W/ JOINTS LAPPED NOT LESS THAN 6" (PUNCTURE RESISTANT) - POUR SLAB AND INSTALL BARRIER PER A3 RECOMMENDATIONS TO PREVENT SLAB CURLING
- (65) VENTED ATTIC SPACE - 1/300 OF ATTIC AREA
- (66) SORE IN SOFFITS - SORE IN UPPER 1/3 OF ATTIC AREA
- (67) ICE & WATER SHIELD AT EAVES
- (68) PREFINISHED STANDING SEAM METAL ROOF

- DOORS AND WINDOWS**
- (69) ALUMINUM ENTRY SYSTEM
 - (70) ALUMINUM STOREFRONT SYSTEM
 - (71) VINYL WINDOW W/ INTEGRAL BRICK MOLD - SEE PLAN AND ELEV. FOR SIZES
 - (72) HOLLOW METAL WINDOW - SEE PLAN AND ELEV. FOR SIZES
 - (73) HOLLOW METAL DOOR/FRAME - SEE PLAN AND ELEV. FOR SIZES
- FINISHES**
- (74) 5/8" TYPE X GYP BOARD
 - (75) (2) LAYERS 5/8" TYPE X GYP. BOARD
 - (76) 5/8" TYPE "C" GYP. BD. ON CEILING
 - (77) ACOUSTIC TILE (REVEAL EDGE) ON SUSPENDED SYSTEM (NON RATED-U.N.O.)
 - (78) 5/8" EXTERIOR GYPSUM SHEATHING
 - (79) 5/8" TYPE "X" GYP BD OVER 7/8" FURRING HAT CHANNELS



REVISIONS		
09/17/13		



36"x48" sheets are full size drawings -- 18"x24" sheets are half size drawings.

PROVIDENCE HALL HIGH SCHOOL
HERRIMAN UTAH
EXTERIOR ELEVATIONS

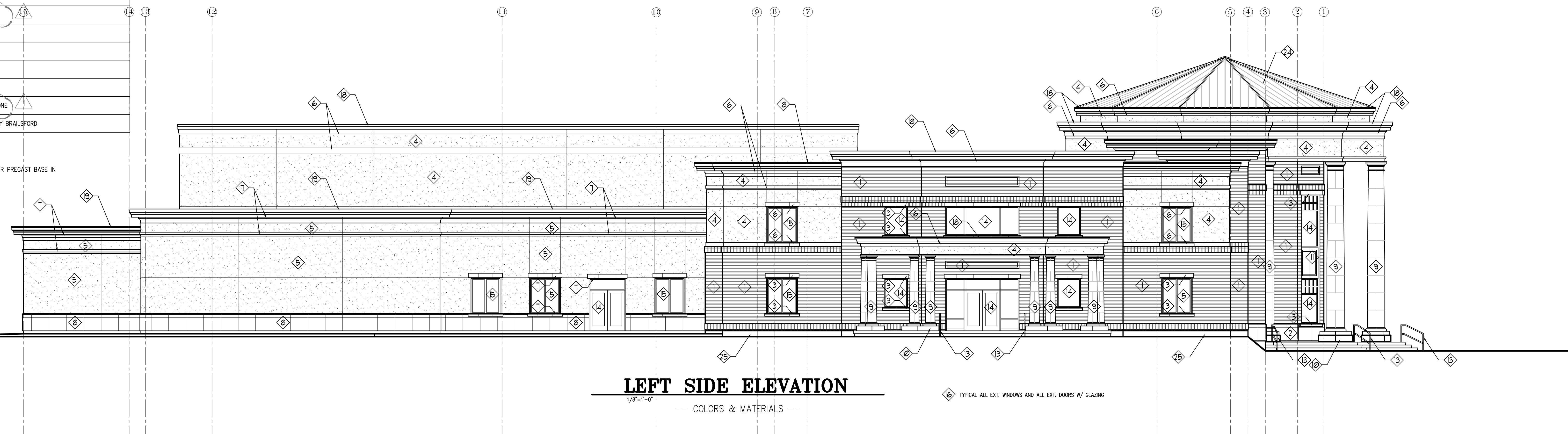
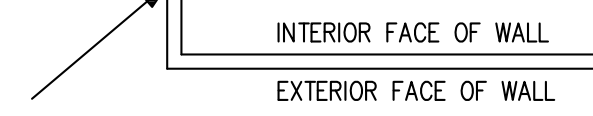
PERMIT SET #2: 09-17-13

DRAWN: KWH
CHECKED: KBH
DATE: SEPTEMBER 2013
SCALE: AS SHOWN
JOB NO.

SHEET
A2.2

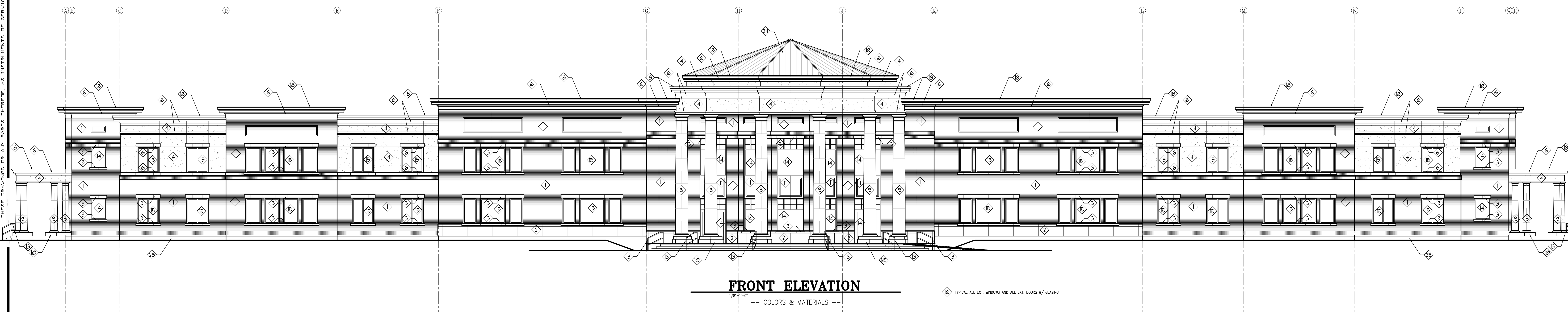
KEY TO EXTERIOR FINISHES	
1	BRICK TO MATCH THE BRICK AT PROVIDENCE HALL JR. HIGH
2	PRECAST BASE #WHITE MEDIUM ACID WASH, BRALSFORD
3	PRECAST TRIMS #WHITE MEDIUM ACID WASH, BRALSFORD
4	EFS (FIELD 1) #101 SUPER WHITE, FINE FINISH, DRYVIT
5	EFS (FIELD 2) #3099 BRUME, FINE FINISH, SENERGY
6	EFS TRIMS - 1 #101 SUPER WHITE, FINE FINISH, DRYVIT
7	EFS TRIMS - 2 #3099 BRUME, FINE FINISH, SENERGY
8	EFS BASE #875 GREY CLOUD, FINE FINISH, SENERGY
9	GPRC COLUMNS TO MATCH #101 SUPER WHITE BY DRYVIT
10	CONCRETE BASE SMOOTH, NATURAL CONCRETE FINISH
11	PRECAST PANEL #WHITE MEDIUM ACID WASH, BRALSFORD
12	NOT USED
13	HANDRAIL/GUARDRAIL #BLACK
14	ALUM. STOREFRONT #BLACK
15	VINYL WINDOW W/ INTEGRAL BRICK MOULD #WHITE, MILGUARD
16	GLASS #CLEAR (SEE SHEETS A2.1/A2.2 & A4.1 FOR ADDITIONAL GLAZING INFORMATION)
17	WALL LIGHTS - DECORATIVE #BLACK, GRAND ESSEX (7810) COMMERCIAL, HANOVER LANTERN INC.
18	PREFINISHED METAL FLASHING - 1 #WHITE, MASTIC, ALCOA
19	PREFINISHED METAL FLASHING - 2 #SAGE, MASTIC, ALCOA
20	HARDWARE BRUSHED CHROME
21	HOLLOW METAL DOOR #BLACK
22	HOLLOW METAL DOOR FRAME #BLACK
23	NOT USED
24	STANDING SEAM METAL ROOF COLOR TO MATCH #SLATE GRAY, FRESTONE
25	FOUNDATION PLASTER TO MATCH #WHITE MEDIUM ACID WASH BY BRALSFORD

NOTE: ALL COLORS TO BE SUBMITTED TO ARCHITECT AND OWNER FOR APPROVAL.
 NOTE: LOCATIONS OF ALL COLORS TO BE VERIFIED BY ARCHITECT AND OWNER.
 NOTE: ANY VENTS ON EXTERIOR OF BUILDING TO BE PAINTED TO MATCH THE COLOR OF THE EFS, BRICK, OR PRECAST BASE IN WHICH THEY ARE LOCATED. VERIFY PAINT COLOR WITH ARCHITECT AND OWNER.
 NOTE: EFS COLORS TO TERMINATE ON INSIDE CORNERS ONLY.



THESE DRAWINGS OR ANY PARTS THEREOF, AS INSTRUMENTS OF SERVICE, REMAIN THE PROPERTY OF THE ARCHITECTS AND MAY NOT BE REPRODUCED OR USED IN OTHER WORK WITHOUT THEIR WRITTEN CONSENT.

DATE PLOTTED: 09/17/13 11:52:12



REVISIONS			
1	09/17/13		



36"x48" sheets are full size drawings -- 18"x24" sheets are half size drawings.

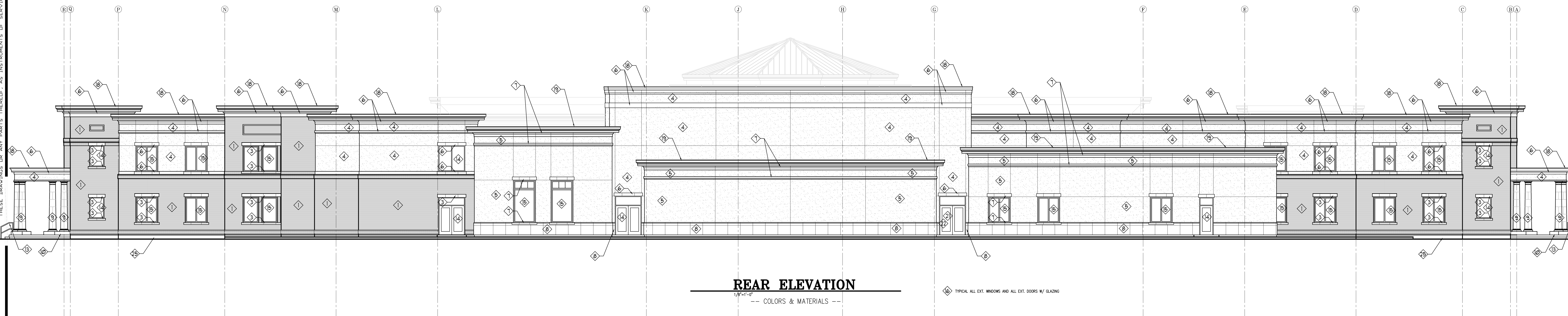
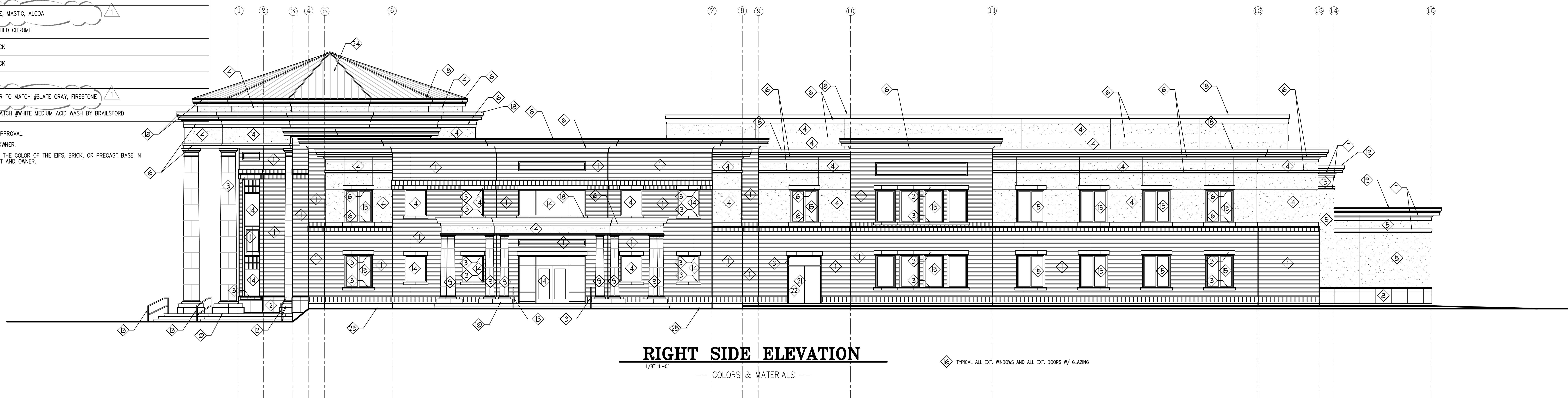
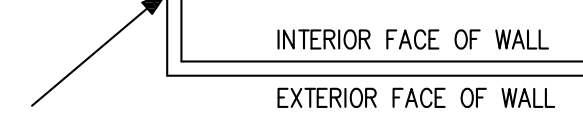
PROVIDENCE HALL HIGH SCHOOL
 HERRIMAN UTAH
EXTERIOR COLORS & MATERIALS

PERMIT SET #2: 09-17-13

DRAWN KWH	CHECKED KBH	SHEET
DATE SEPTEMBER 2013		A2.3
SCALE		
JOB NO.		

KEY TO EXTERIOR FINISHES	
1	BRICK TO MATCH THE BRICK AT PROVIDENCE HALL JR. HIGH
2	PRECAST BASE #WHITE MEDIUM ACID WASH, BRALSFORD
3	PRECAST TRIMS #WHITE MEDIUM ACID WASH, BRALSFORD
4	EFS (FIELD 1) #101 SUPER WHITE, FINE FINISH, DRYVIT
5	EFS (FIELD 2) #3099 BRUME, FINE FINISH, SENERGY
6	EFS TRIMS - 1 #101 SUPER WHITE, FINE FINISH, DRYVIT
7	EFS TRIMS - 2 #3099 BRUME, FINE FINISH, SENERGY
8	EFS BASE #875 GREY CLOUD, FINE FINISH, SENERGY
9	GPRC COLUMNS TO MATCH #101 SUPER WHITE BY DRYVIT
10	CONCRETE BASE SMOOTH, NATURAL CONCRETE FINISH
11	PRECAST PANEL #WHITE MEDIUM ACID WASH, BRALSFORD
12	NOT USED
13	HANDRAIL/GUARDRAIL #BLACK
14	ALUM. STOREFRONT #BLACK
15	VINYL WINDOW W/ INTEGRAL BRICK MOULD #WHITE, MILGUARD
16	GLASS #CLEAR (SEE SHEETS A2.1/A2.2 & A4.1 FOR ADDITIONAL GLAZING INFORMATION)
17	WALL LIGHTS - DECORATIVE #BLACK, GRAND ESSEX (7810) COMMERCIAL, HANOVER LANTERN INC.
18	PREFINISHED METAL FLASHING - 1 #WHITE, MASTIC, ALCOA
19	PREFINISHED METAL FLASHING - 2 #SAGE, MASTIC, ALCOA
20	HARDWARE BRUSHED CHROME
21	HOLLOW METAL DOOR #BLACK
22	HOLLOW METAL DOOR FRAME #BLACK
23	NOT USED
24	STANDING SEAM METAL ROOF COLOR TO MATCH #SLATE GRAY, FIRESTONE
25	FOUNDATION PLASTER TO MATCH #WHITE MEDIUM ACID WASH BY BRALSFORD

NOTE: ALL COLORS TO BE SUBMITTED TO ARCHITECT AND OWNER FOR APPROVAL.
 NOTE: LOCATIONS OF ALL COLORS TO BE VERIFIED BY ARCHITECT AND OWNER.
 NOTE: ANY VENTS ON EXTERIOR OF BUILDING TO BE PAINTED TO MATCH THE COLOR OF THE EFS, BRICK, OR PRECAST BASE IN WHICH THEY ARE LOCATED. VERIFY PAINT COLOR WITH ARCHITECT AND OWNER.
 NOTE: EFS COLORS TO TERMINATE ON INSIDE CORNERS ONLY.



REVISIONS			
1	09/17/13		



36"x48" sheets are full size drawings -- 18"x24" sheets are half size drawings.

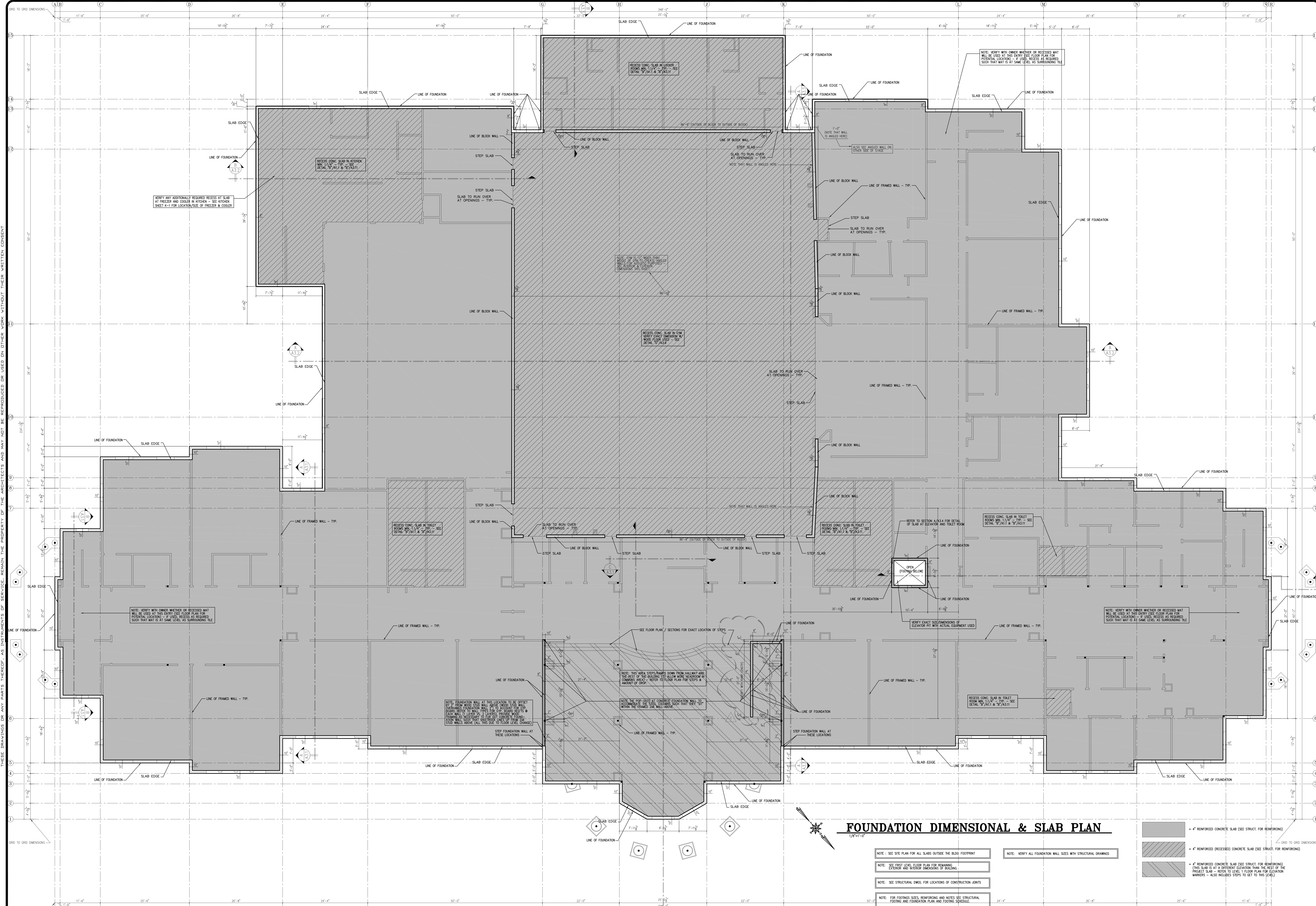
PROVIDENCE HALL HIGH SCHOOL
 HERRIMAN UTAH
EXTERIOR COLORS & MATERIALS

DRAWN KWH	CHECKED KBH	DATE SEPTEMBER 2013	SCALE	SHEET A2.4
JOB NO.				

PERMIT SET #2: 09-17-13

DATE PLOTTED: 09/17/13 10:52:12

THESE DRAWINGS OR ANY PARTS THEREOF, AS INSTRUMENTS OF SERVICE, REMAIN THE PROPERTY OF THE ARCHITECTS AND SHALL NOT BE REPRODUCED OR USED IN OTHER WORK WITHOUT THEIR WRITTEN CONSENT.



FOUNDATION DIMENSIONAL & SLAB PLAN
1/8"=1'-0"

- NOTE: SEE SITE PLAN FOR ALL SLABS OUTSIDE THE BLDG. FOOTPRINT
- NOTE: SEE FIRST LEVEL FLOOR PLAN FOR REMAINING EXTERIOR AND INTERIOR DIMENSIONS OF BUILDING
- NOTE: SEE STRUCTURAL DWGS. FOR LOCATIONS OF CONSTRUCTION JOINTS
- NOTE: FOR FOOTING SIZES, REINFORCING AND NOTES SEE STRUCTURAL FOOTING AND FOUNDATION PLAN AND FOOTING SCHEDULE
- NOTE: VERIFY ALL FOUNDATION WALL SIZES WITH STRUCTURAL DRAWINGS

- 4" REINFORCED CONCRETE SLAB (SEE STRUCT. FOR REINFORCING)
 - 4" REINFORCED (RECESSED) CONCRETE SLAB (SEE STRUCT. FOR REINFORCING)
 - 4" REINFORCED CONCRETE SLAB (SEE STRUCT. FOR REINFORCING) (THIS SLAB IS AT A DIFFERENT ELEVATION THAN THE REST OF THE PROJECT SLAB - REFER TO LEVEL 1 FLOOR PLAN FOR ELEVATION MARKINGS - ALSO INCLUDE STEPS TO GET TO THE LEVEL)

REVISIONS		
09/17/13		



PROVIDENCE HALL HIGH SCHOOL
 HERRIMAN FOUNDATION DIMENSIONAL & SLAB PLAN UTAH

DRAWN: KWH
 CHECKED: KBH
 DATE: SEPTEMBER 2013
 SCALE:
 JOB NO.:
A5.1

THESE DRAWINGS OR ANY PARTS THEREOF AS INSTRUMENTS OF SERVICE, REMAIN THE PROPERTY OF THE ARCHITECTS AND MAY NOT BE REPRODUCED OR USED IN OTHER WORK WITHOUT THEIR WRITTEN CONSENT.

36"x48" sheets are full size drawings -- 18"x24" sheets are half size drawings.

PERMIT SET #2: 09-17-13

